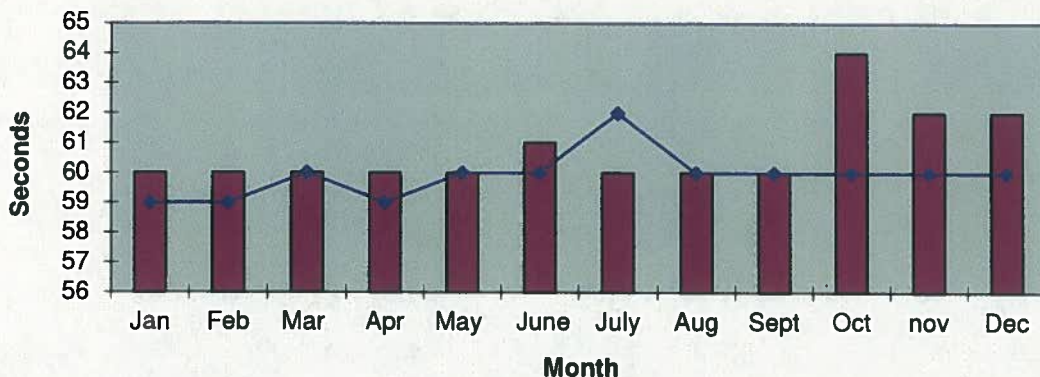
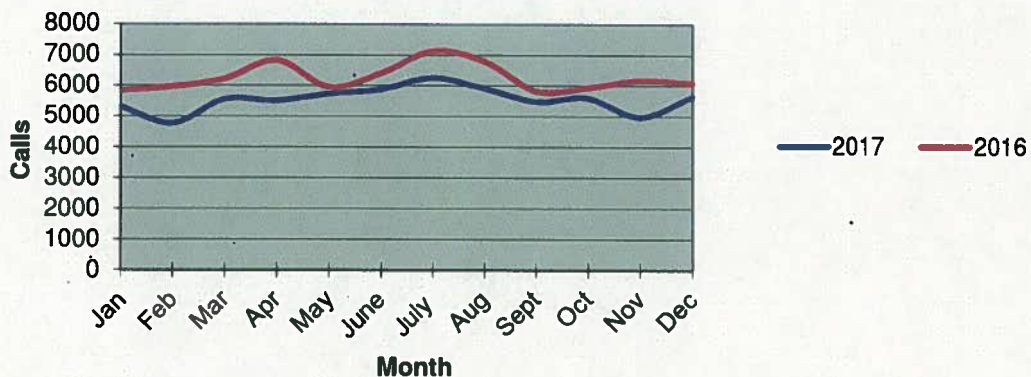


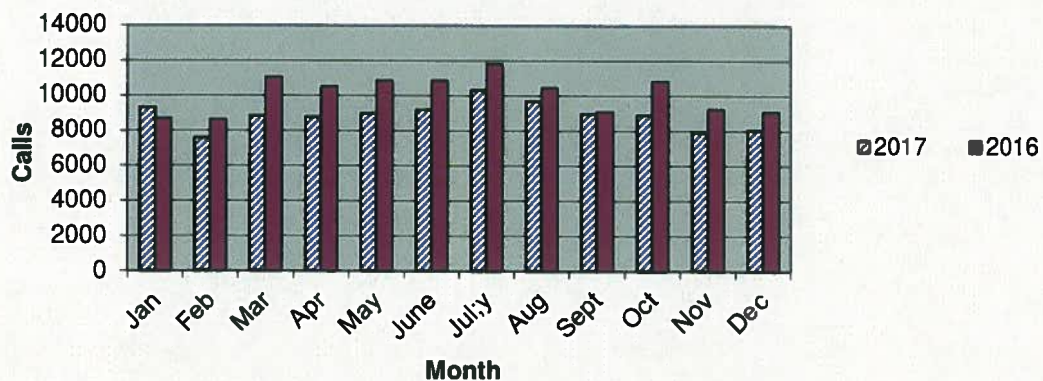
Priority 1 Dispatch Times- Police



911 Calls



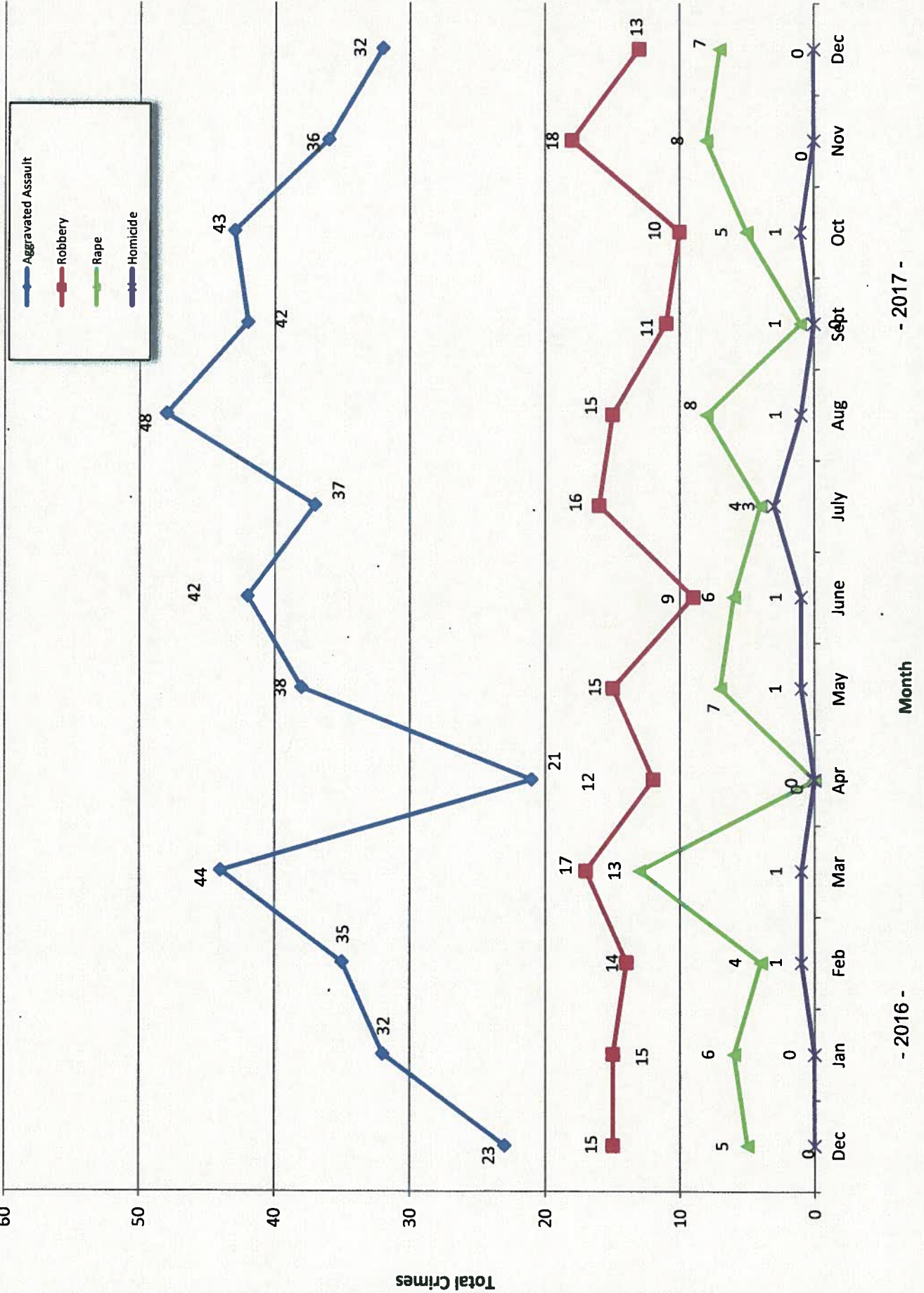
Calls for Service



**OCEANSIDE POLICE DEPARTMENT
FBI INDEX CRIMES**

		MONTHLY CASE ACTIVITY 2017												YEAR TO DATE COMPARISON		% CHANGE		
		JAN	FEB	MAR	APR	MAY	JUN	JUL	AUG	SEP	OCT	NOV	DEC	2016	2017			
1. HOMICIDE	Actual Cleared	0	1	1	0	0	1	1	1	0	1	0	0	0	8	9	1	12.5%
2. RAPE	Actual Cleared	6	4	13	0	7	6	4	8	1	5	8	7	3	56	69	13	23.2%
3. ROBBERY	Actual Cleared	15	14	17	12	15	9	16	15	11	10	18	13	7	172	165	-7	-4.1%
4. AGGR. ASSAULT	Actual Cleared	32	35	44	21	38	42	37	48	42	43	36	32	1	404	450	46	11.4%
5. BURGLARY	Actual Cleared	60	64	74	43	45	31	56	54	61	46	26	32	0	607	592	-15	-2.5%
6. LARCENY THEFT	Actual Cleared	287	263	254	257	258	249	229	324	243	247	210	179	22	3276	3000	-276	-8.4%
7. AUTO THEFT	Actual Cleared	38	24	47	33	37	36	41	44	50	45	46	55	4	481	496	15	3.1%
TOTAL INDEX CRIMES	Actual Cleared	438	405	450	366	401	374	386	494	408	397	344	318	43	5004	4781	-223	-4.5%
TOTAL PERSON CRIMES	Actual Cleared	53	54	75	33	61	58	60	72	54	59	62	52	17	640	693	53	8.3%
TOTAL PROPERTY CRIMES	Actual Cleared	385	351	375	333	340	316	326	422	354	338	282	266	26	4364	4088	-276	-6.3%
ARSON	Actual Cleared	4	2	0	2	6	2	1	4	0	0	0	1	1	14	22	8	57.1%
Y-T-D Loss 123,879.00		0	0	0	0	0	0	2	0	0	0	0	1	1	3	3	0	0.0%

Part 1 Crimes by Month (Violent Crimes) December 2017

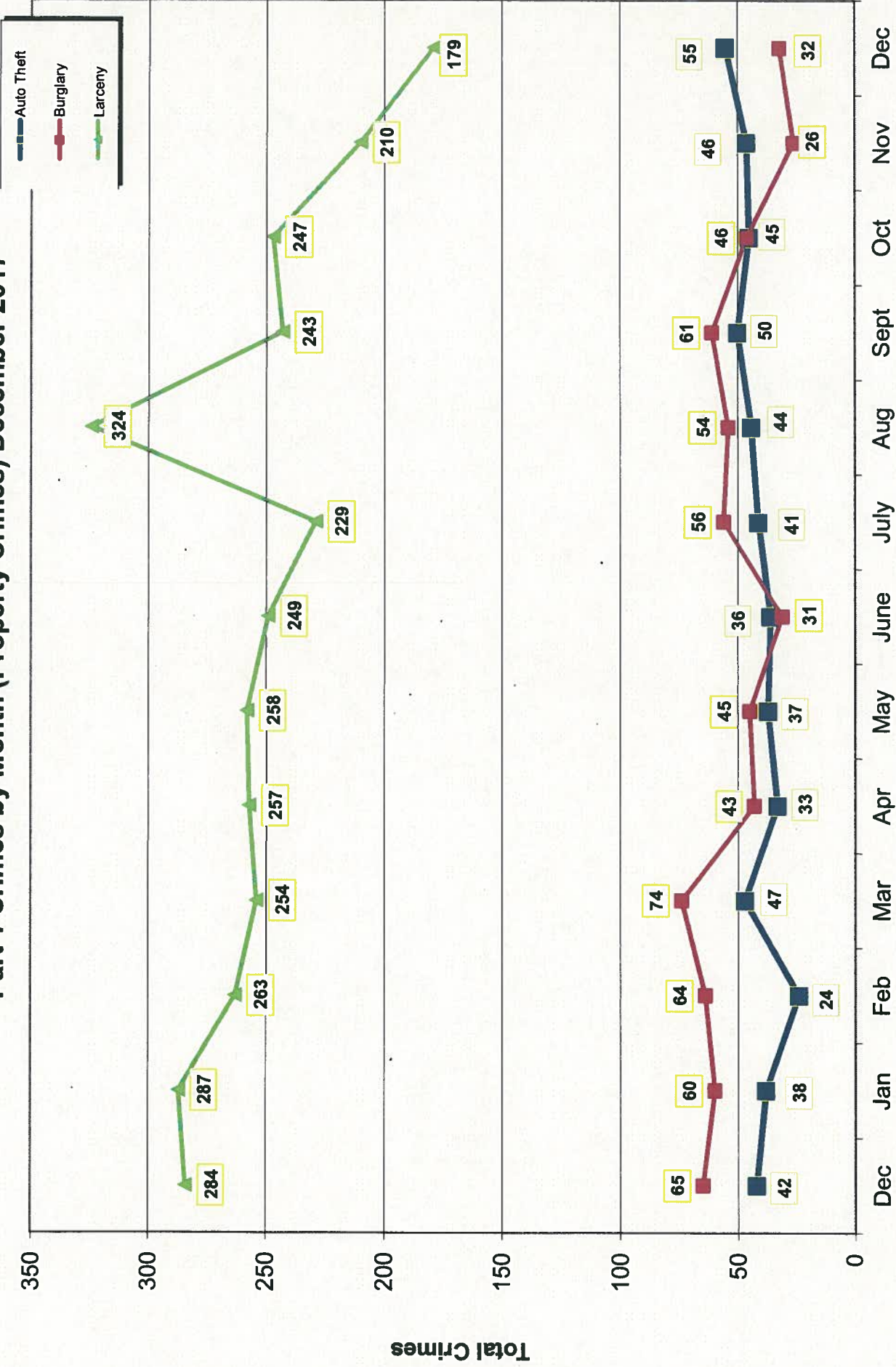


- 2017 -

Month

- 2016 -

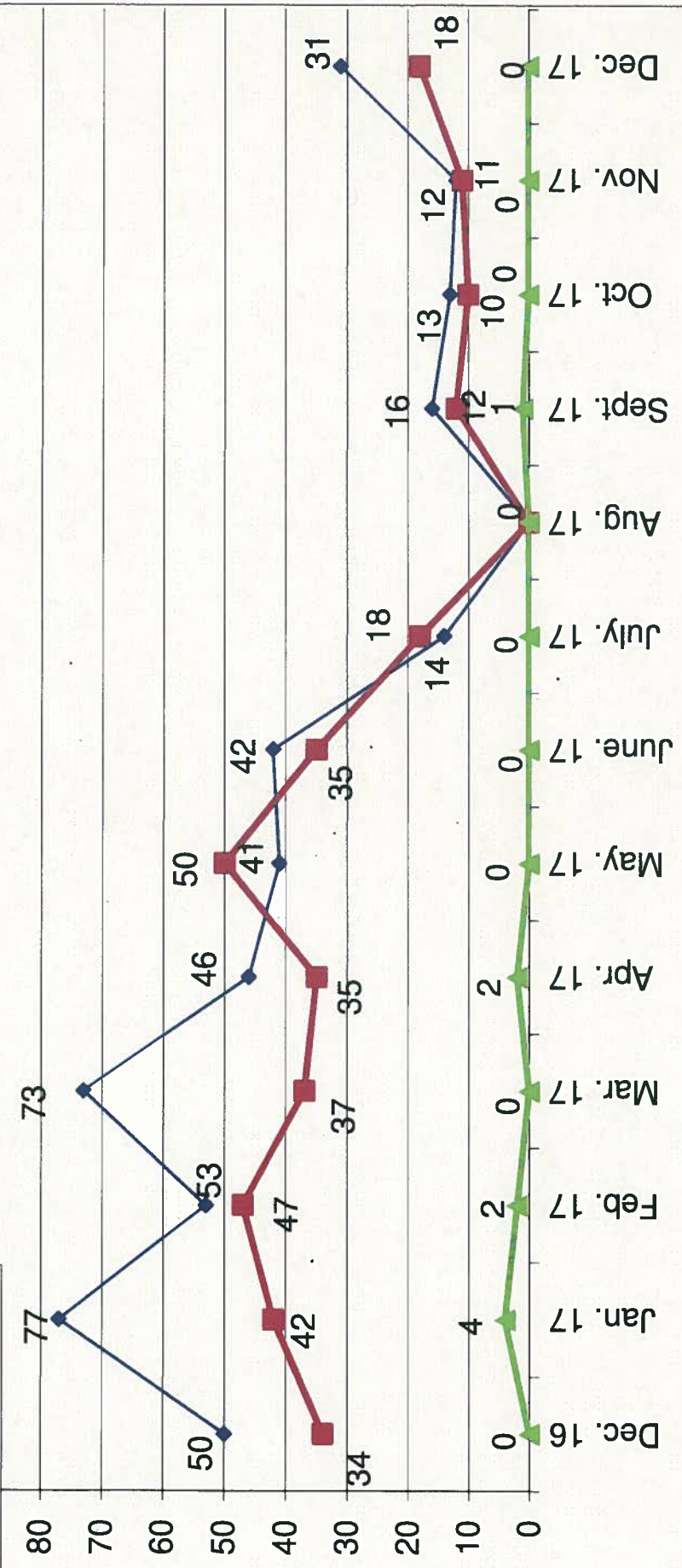
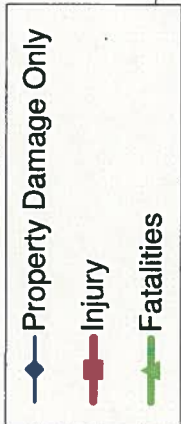
Part 1 Crimes by Month (Property Crimes) December 2017



- 2017 -

- 2016 -

Traffic Collisions December 2016 - December 2017





UCR Crimes by GeoArea

Required Parameters
Reporting Period: Dec 2017
Agency: OCEANSIDE

Optional Parameters
Geographical Area: All Beats
Group by: Agency Select by: Neighborhood

Prior Report Number: S1STA120

Neighborhood	MURDER	RAPE (HISTORICAL)	RAPE (HISTORICAL)	ROBBERY--	AGGRVD	VIOLNT	BURGLARY	RESID	NRESID	TOTAL	\$400+	<\$400	TOTAL	THEFT	CRM TL	IDX TL	CRIME	CAR	
					ASULT	CRM TL													
Agency = OCEANSIDE																			
AIRPORT	0	0	0	0	3	3	0	0	0	0	3	-1	2	3	5	8	2		
EASTSIDE/CAPISTRANO	0	0	0	1	2	3	0	1	1	1	3	8	11	3	15	18	4		
FIRE MOUNTAIN	0	0	0	1	0	1	0	2	2	2	9	16	25	4	31	32	9		
GUAJOME	0	0	0	0	1	1	0	0	0	0	2	10	12	5	17	18	6		
IVY RAN/RAN DEL ORO	0	1	1	1	3	5	4	3	7	8	18	18	26	16	49	54	21		
LAKE	0	1	1	0	3	1	5	0	0	3	10	13	13	0	13	18	5		
MIRA COSTA	0	0	0	1	0	1	1	0	1	2	4	6	6	1	8	9	2		
MISSN MESALOMA ALTA	0	3	0	1	5	9	1	1	2	3	12	15	15	3	20	29	5		
MORRO HILLS	0	0	0	0	0	0	1	0	1	0	2	2	2	4	7	7	1		
NORTH VALLEY	0	0	0	0	4	4	2	2	4	1	5	6	6	1	11	15	0		
OCEAN HILLS	0	0	0	0	4	4	1	0	1	0	2	2	2	1	4	8	0		
OCEANA	0	-1	1	0	0	-1	1	0	1	0	1	1	1	0	2	1	1		
SAN LUIS REY	0	1	0	0	2	4	3	4	7	9	12	21	21	8	36	40	10		
SOUTH OCEANSIDE	0	0	0	1	4	6	1	2	3	0	5	5	5	1	9	15	0		
TOWNSITE	0	0	0	0	1	4	5	1	2	7	12	19	19	3	24	29	7		
TRI CITY	0	1	1	0	0	1	0	0	0	4	8	8	12	1	13	14	1		
UNKNOWN	0	1	1	0	0	1	0	0	0	1	0	0	1	1	2	3	1		
SUB-TOTAL	0	7	3	6	7	32	52	16	16	32	55	124	179	55	266	318	75		
GRAND TOTALS	0	7	3	6	7	32	52	16	16	32	55	124	179	55	266	318	75		



UCR Crimes by GeoArea

Required Parameters: Reporting Period: Jan 2017 to Dec 2017 Agency: OCEANSIDE
 Optional Parameters: Geographical Area: All Beats Group by: Agency Select by: Neighborhood
 Prior Report Number: S1STA120

Neighborhood	MURDER	RAPE	RAPE (HISTORICAL)	ROBBERY—	AGGRVD	VIOLENT	BURGLARY—	—LARCENY-THEFT—	M.VEH	PROPERTY	CRIME	CAR					
				ARMED	ASULT	CRM TL	RESID	NRESID	TOTAL	\$400+	<\$400	TOTAL	THEFT	CRM TL	IDX TL	PROWL	
				ST/ ARM													
Agency = OCEANSIDE																	
AIRPORT	0	0	0	1	3	19	23	5	14	19	35	38	73	12	104	127	51
EASTSIDE/CAPISTRANO	1	3	1	5	5	32	46	6	8	14	46	82	128	20	162	208	61
FIRE MOUNTAIN	0	2	1	7	3	20	32	9	29	38	119	249	368	28	434	466	138
GUAJOME	0	4	4	4	2	13	23	8	5	13	61	111	172	25	210	233	77
IVY RAN/RAN DEL ORO	1	14	8	7	7	57	86	36	66	102	136	245	381	85	568	654	256
LAKE	0	2	2	2	5	3	12	15	10	25	28	104	132	18	175	187	28
MIRA COSTA	0	2	2	8	4	17	31	39	39	78	77	113	190	35	303	334	143
MISSN MESALOMA ALTA	0	10	6	9	9	37	65	19	20	39	86	182	268	43	350	415	147
MORRO HILLS	1	1	1	1	0	17	20	6	1	7	12	20	32	8	47	67	20
NORTH VALLEY	1	3	2	3	4	28	39	22	3	25	27	62	89	31	145	184	48
OCEAN HILLS	0	0	0	0	0	9	9	7	1	8	18	20	38	3	49	58	23
OCEANA	0	0	1	0	2	5	7	3	2	5	15	33	48	4	57	64	26
SAN LUIS REY	0	8	4	10	8	41	67	31	20	51	77	133	210	57	318	385	104
SOUTH OCEANSIDE	1	1	1	5	4	20	31	25	21	46	63	92	155	19	220	251	59
TOWNSITE	4	13	12	15	30	103	165	70	39	109	219	375	594	69	772	937	228
TRI CITY	0	5	4	1	1	27	34	10	3	13	31	87	118	36	167	201	50
UNKNOWN	0	1	1	0	0	2	3	0	0	0	3	1	4	3	7	10	3
SUB-TOTAL	9	69	48	78	87	450	693	311	281	592	1,053	1,947	3,000	496	4,088	4,781	1,462
GRAND TOTALS	9	69	48	78	87	450	693	311	281	592	1,053	1,947	3,000	496	4,088	4,781	1,462