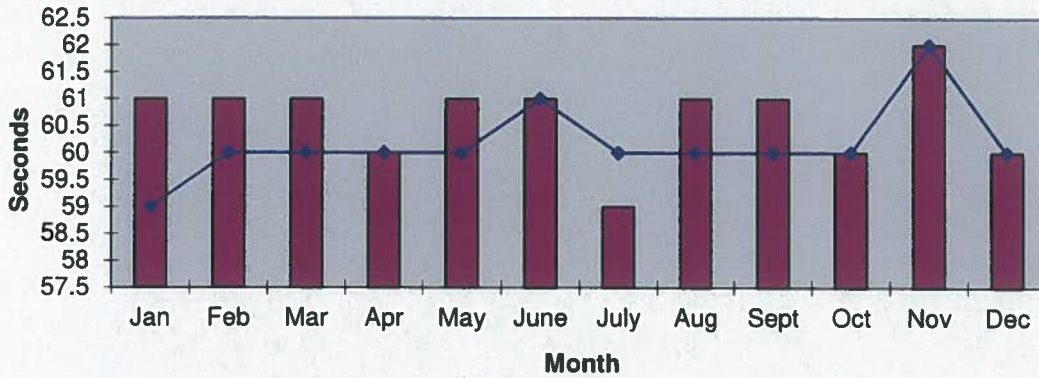
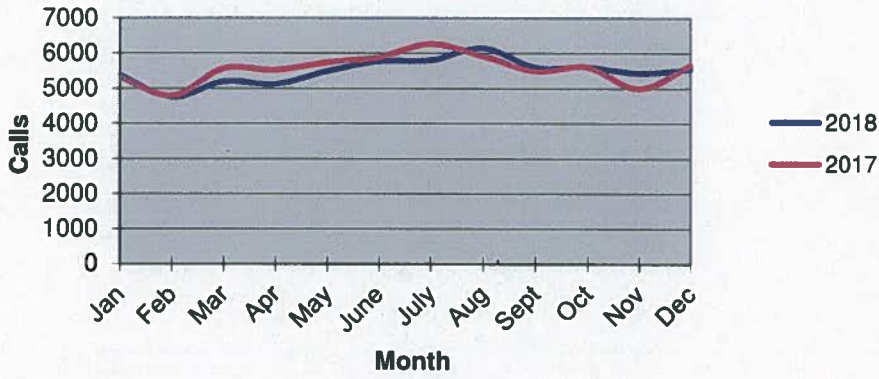


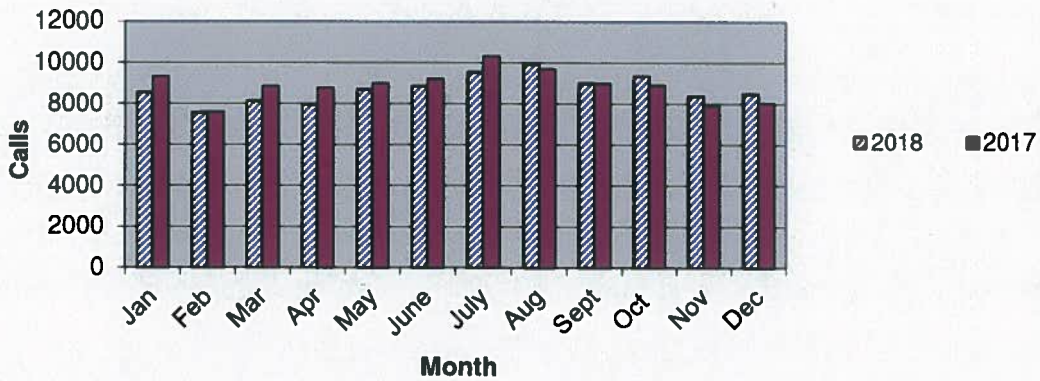
Priority 1 Dispatch Times- Police



911 Calls



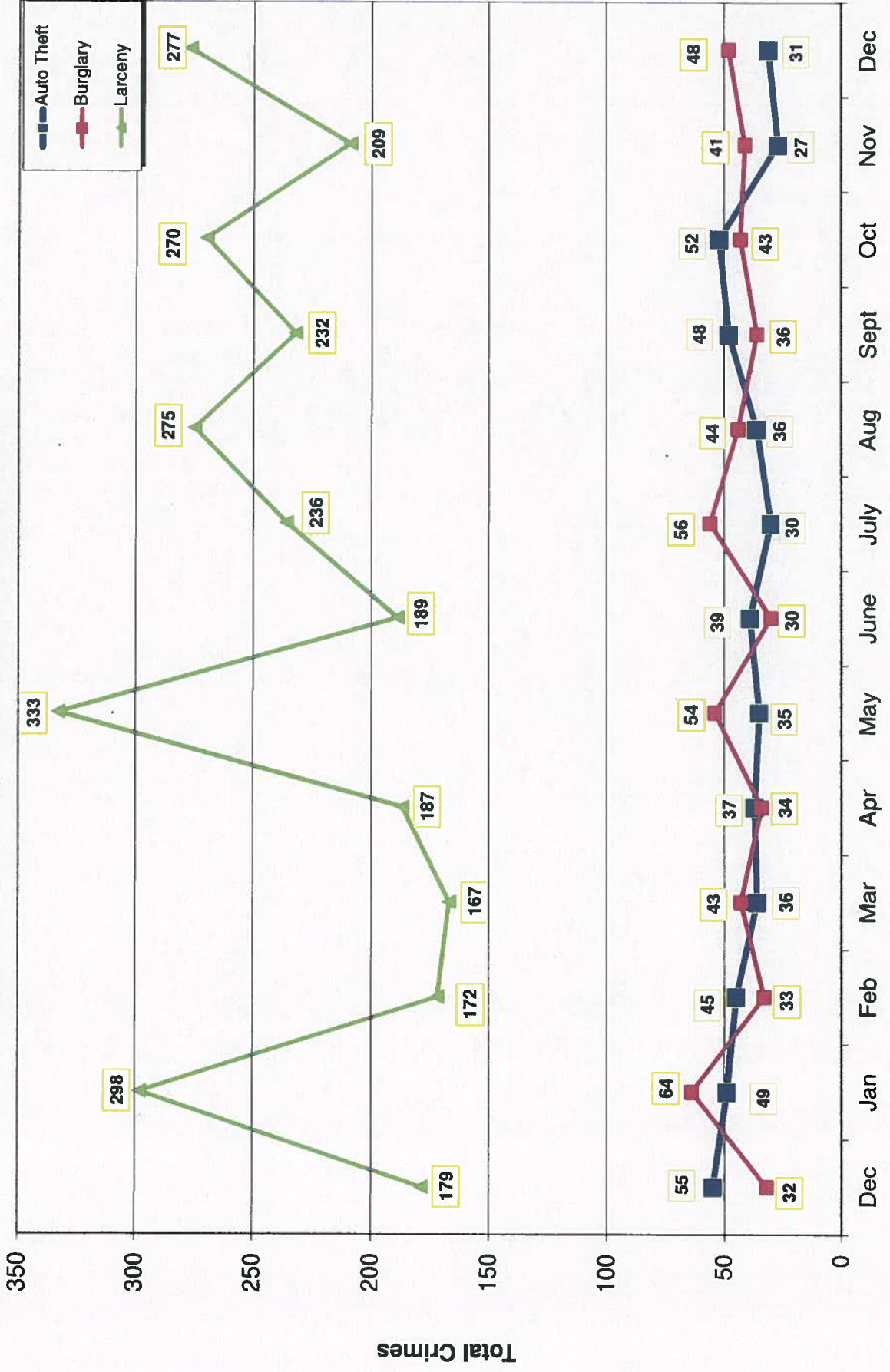
Calls for Service



**OCEANSIDE POLICE DEPARTMENT
FBI INDEX CRIMES**

	MONTHLY CASE ACTIVITY 2018												YEAR TO DATE COMPARISON		% CHANGE	
	JAN	FEB	MAR	APR	MAY	JUN	JUL	AUG	SEP	OCT	NOV	DEC	2017	2018		
1. HOMICIDE	1	0	0	2	0	0	1	1	1	0	2	1	9	9	0	0.0%
	1	0	0	1	0	0	1	0	1	1	2	0	6	7	1	16.7%
2. RAPE	5	3	2	8	11	4	7	3	6	9	2	9	69	69	0	0.0%
	3	1	1	1	0	0	0	0	1	0	0	1	21	8	-13	-61.9%
3. ROBBERY	11	10	16	10	17	8	9	18	13	14	14	18	165	158	-7	-4.2%
	3	1	3	4	4	2	1	6	5	3	5	9	54	46	-8	-14.8%
4. AGGR. ASSAULT	35	32	26	42	46	20	43	45	43	33	30	38	450	433	-17	-3.8%
	16	9	15	11	16	15	19	24	14	16	13	21	178	189	11	6.2%
5. BURGLARY	64	33	43	34	54	30	56	44	36	43	41	48	592	526	-66	-11.1%
	5	4	4	9	2	4	3	7	4	5	0	8	50	55	5	10.0%
6. LARCENY THEFT	298	172	167	187	333	189	236	275	232	270	209	277	3000	2845	-155	-5.2%
	27	16	15	13	15	8	24	23	9	18	12	34	229	214	-15	-6.6%
7. AUTO THEFT	49	45	36	37	35	39	30	36	48	52	27	31	496	465	-31	-6.3%
	2	2	2	2	1	6	3	2	5	5	1	2	34	33	-1	-2.9%
TOTAL INDEX CRIMES	463	295	290	320	496	290	382	422	379	421	325	422	4781	4505	-276	-5.8%
	57	33	40	41	38	35	51	62	39	48	33	75	572	552	-20	-3.5%
TOTAL PERSON CRIMES	52	45	44	62	74	32	60	67	63	56	48	66	693	669	-24	-3.5%
	23	11	19	17	20	17	21	30	21	20	20	31	259	250	-9	-3.5%
TOTAL PROPERTY CRIMES	411	250	246	258	422	258	322	355	316	365	277	356	4088	3836	-252	-6.2%
	34	22	21	24	18	18	30	32	18	28	13	44	313	302	-11	-3.5%
ARSON	2	1	0	3	3	2	0	2	1	0	0	1	22	15	-7	-31.8%
Y-T-D Loss \$178,417.00	1	0	0	0	0	0	0	1	1	0	0	1	3	4	1	33.3%

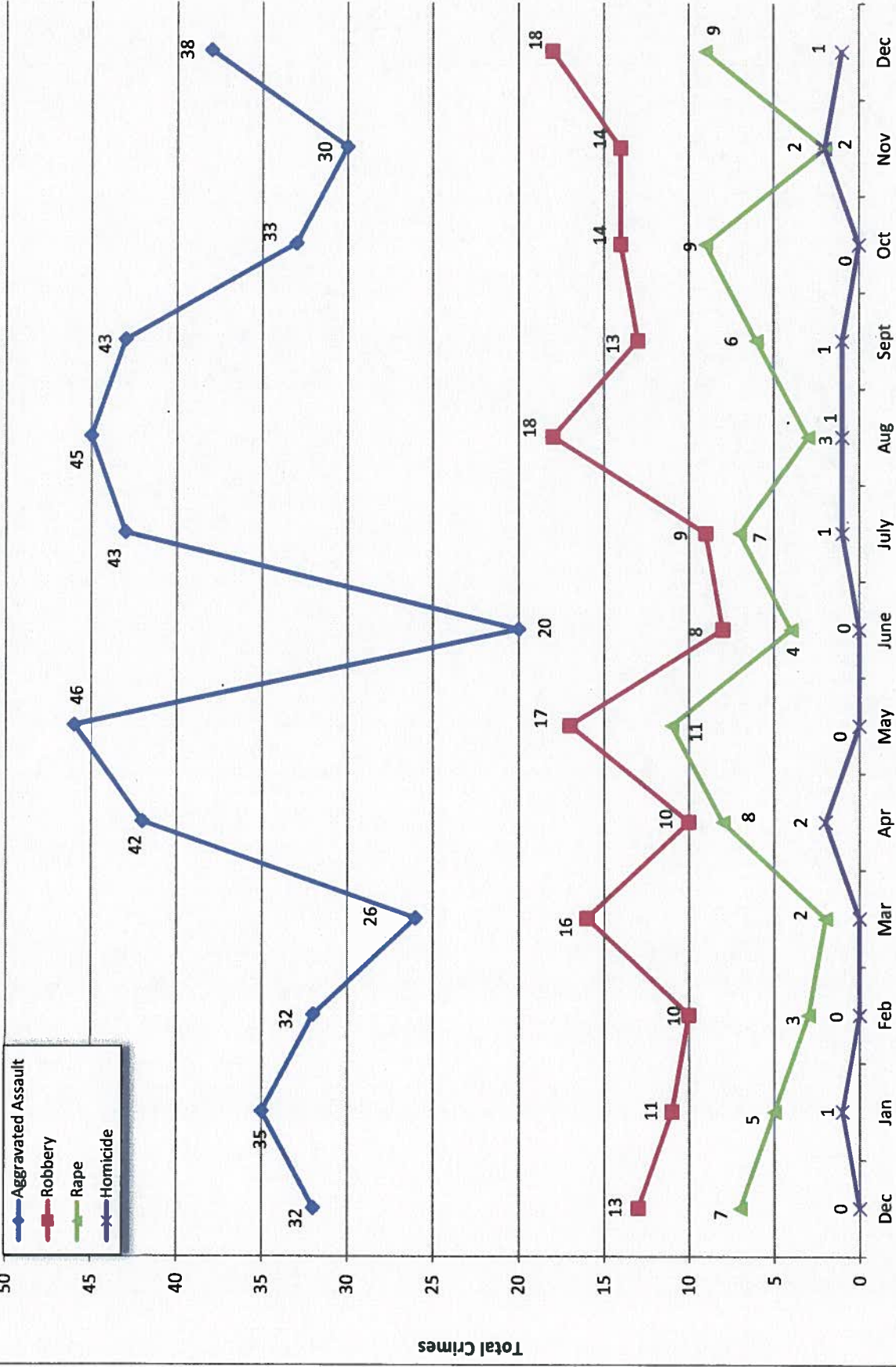
Part 1 Crimes by Month (Property Crimes) 2018



- 2018 -

- 2017 -

Part 1 Crimes by Month (Violent Crimes) 2018

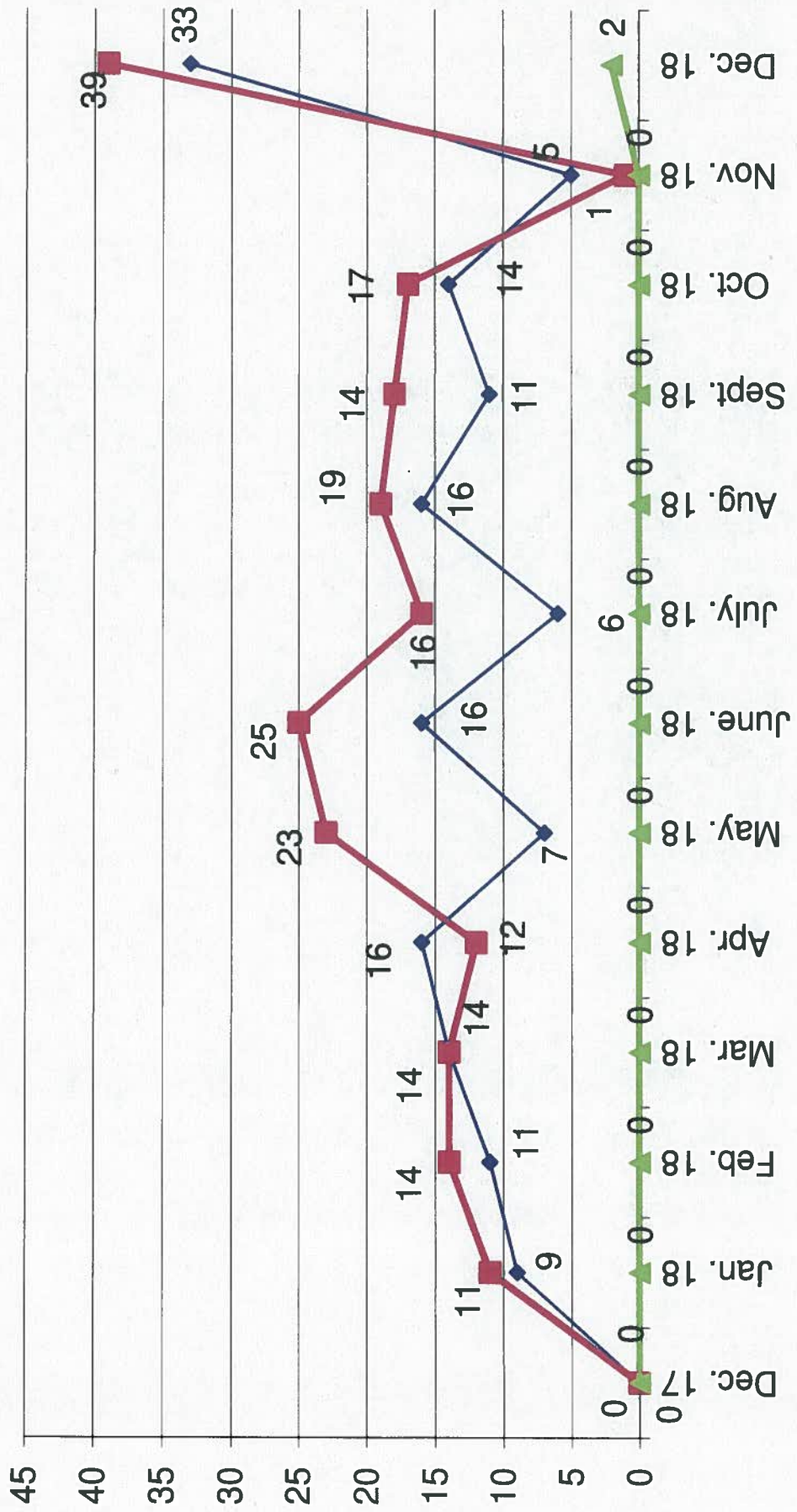
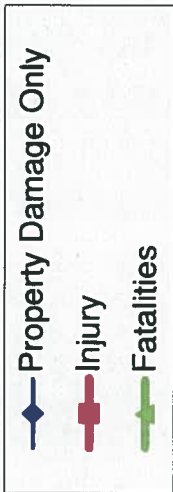


- 2018 -

Month

- 2017 -

Traffic Collisions December 2017 - December 2018





UCR Crimes by GeoArea

Required Parameters
 Reporting Period: Dec 2018
 Agency: OCEANSIDE

Optional Parameters
 Geographical Area: All Beats
 Group by: Agency Select by: Neighborhood

Prior Report Number: S1STA120

Neighborhood	MURDER	RAPE	RAPE (HISTORICAL)	ROBBERY--	ST/ ARM	AGGRVD	VIOLENT	RESID	NRESID	TOTAL	\$400+	<\$400	TOTAL	THEFT	PROPERTY	CRIME	CAR	
				ARMED		ASSAULT	CRM TL	RESID	NRESID	TOTAL	\$400+	<\$400	TOTAL	THEFT	CRM TL	IDX TL	PROWL	
Agency = OCEANSIDE																		
AIRPORT	0	0	0	1	2	1	4	0	0	0	1	6	7	1	8	12	1	
EASTSIDE/CAPISTRANO	0	0	0	0	2	0	2	5	1	6	4	4	8	1	15	17	3	
FIRE MOUNTAIN	0	0	0	2	1	2	5	0	0	0	10	24	34	3	37	42	5	
GUAJOME	0	0	0	0	0	3	3	0	1	1	6	9	15	2	18	21	7	
IVY RAN/RAN DEL ORO	0	0	0	2	0	4	6	7	5	12	12	14	26	4	42	48	12	
LAKE	0	0	0	3	1	1	5	2	0	2	7	6	13	1	16	21	2	
MIRA COSTA	0	1	1	0	0	1	2	1	1	2	13	13	26	2	30	32	18	
MISSN MESALOMA ALTA	0	2	1	0	0	3	5	2	1	3	2	11	13	1	17	22	4	
MORRO HILLS	0	1	0	0	0	1	2	0	0	0	1	3	4	0	4	6	2	
NORTH VALLEY	0	1	1	0	0	1	2	3	0	3	2	9	11	4	18	20	1	
OCEAN HILLS	0	0	0	-1	0	0	-1	1	0	1	1	1	2	1	4	3	1	
OCEANA	0	0	0	0	0	0	0	0	1	1	2	6	8	1	10	10	3	
SAN LUIS REY	1	0	0	0	1	6	8	2	0	2	11	20	31	1	34	42	12	
SOUTH OCEANSIDE	0	1	1	0	1	2	4	2	0	2	3	20	23	5	30	34	12	
TOWNSITE	0	0	1-	1	1	9	11	5	5	10	20	20	40	4	54	65	14	
TRI CITY	0	3	2	0	1	4	8	1	2	3	6	9	15	0	18	26	6	
UNKNOWN	0	0	0	0	0	0	0	0	0	0	0	1	1	0	1	1	1	
SUB-TOTAL	1	9	5	8	10	38	66	31	17	48	101	176	277	31	356	422	104	
GRAND TOTALS	1	9	5	8	10	38	66	31	17	48	101	176	277	31	356	422	104	



UCR Crimes by GeoArea

Required Parameters
 Reporting Period: Jan 2018 to Dec 2018
 Agency: OCEANSIDE

Optional Parameters
 Geographical Area: All Beats
 Group by: Agency Select by: Neighborhood

Prior Report Number: S1STA120

Neighborhood	MURDER	RAPE	RAPE (HISTORICAL)	ROBBERY--	ARMED	ST/ ARM	ASSAULT	AGGRVD	VIOLENT	RESID	NRESID	TOTAL	\$400+	<\$400	TOTAL	THEFT	PROPERTY	CRIME	CAR	
Agency = OCEANSIDE																				
AIRPORT	0	0	0	0	2	5	8	8	15	4	4	8	28	45	73	18	99	114	34	
EASTSIDE/CAPISTRANO	1	3	3	3	4	5	35	48	22	22	7	29	44	69	113	26	168	216	53	
FIRE MOUNTAIN	0	1	1	1	7	11	22	41	6	6	30	36	128	173	301	27	364	405	92	
GUAJOME	0	0	0	0	2	3	14	19	8	8	6	14	55	87	142	12	168	187	76	
IVY RAN/RAN DEL ORO	0	8	3	3	6	6	38	58	42	42	44	86	125	207	332	56	474	532	189	
LAKE	0	3	3	3	8	8	13	32	6	6	2	8	39	98	137	26	171	203	33	
MIRA COSTA	1	6	5	5	2	2	16	27	21	15	15	36	67	89	156	42	234	261	103	
MISSN MESALOMA ALTA	0	6	4	4	1	9	40	56	22	11	33	52	172	224	224	25	282	338	94	
MORRO HILLS	1	1	0	0	2	0	10	14	3	4	7	9	19	28	28	9	44	58	16	
NORTH VALLEY	1	4	4	4	1	4	26	36	31	11	11	42	32	67	99	38	179	215	60	
OCEAN HILLS	0	2	2	2	0	0	3	5	12	0	0	12	21	26	47	2	61	66	34	
OCEANA	0	1	1	1	1	0	8	10	4	6	10	23	32	32	55	6	71	81	31	
SAN LUIS REY	2	9	8	8	6	10	42	69	40	27	67	113	244	357	53	477	546	174		
SOUTH OCEANSIDE	0	3	3	3	3	4	21	31	22	11	33	42	130	172	33	238	269	75		
TOWNSITE	2	13	8	8	12	28	108	163	47	38	85	203	288	491	75	651	814	183		
TRI CITY	1	9	7	7	3	3	26	42	12	8	20	46	69	115	15	150	192	41		
UNKNOWN	0	0	0	0	0	0	3	3	0	0	0	0	2	1	3	2	5	8	3	
SUB-TOTAL	9	69	52	52	60	98	433	669	302	224	526	1,029	1,816	2,845	465	3,836	4,505	1,301		
GRAND TOTALS	9	69	52	52	60	98	433	669	302	224	526	1,029	1,816	2,845	465	3,836	4,505	1,301		