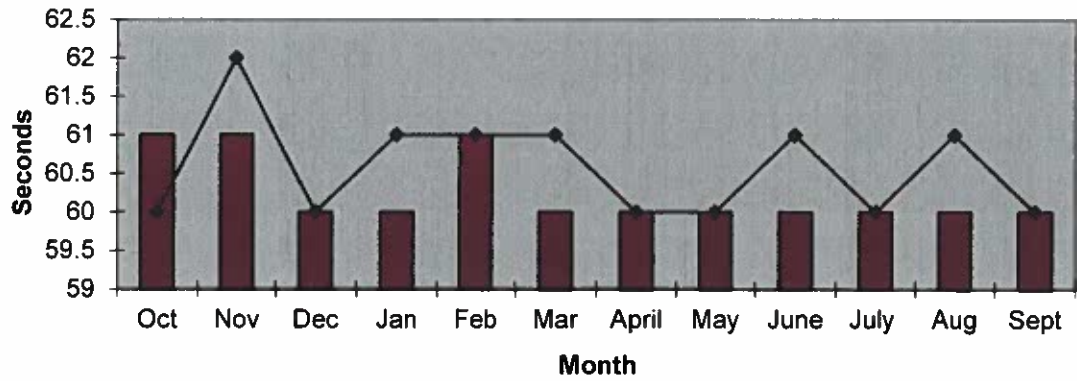
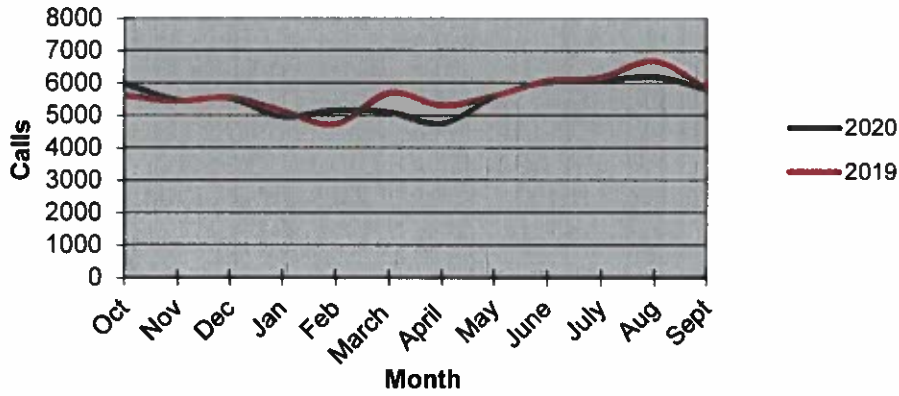


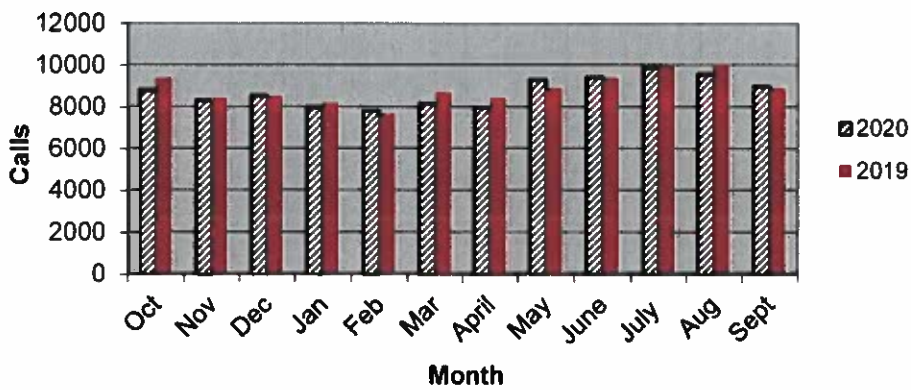
Priority 1 Dispatch Times- Police



911 Calls



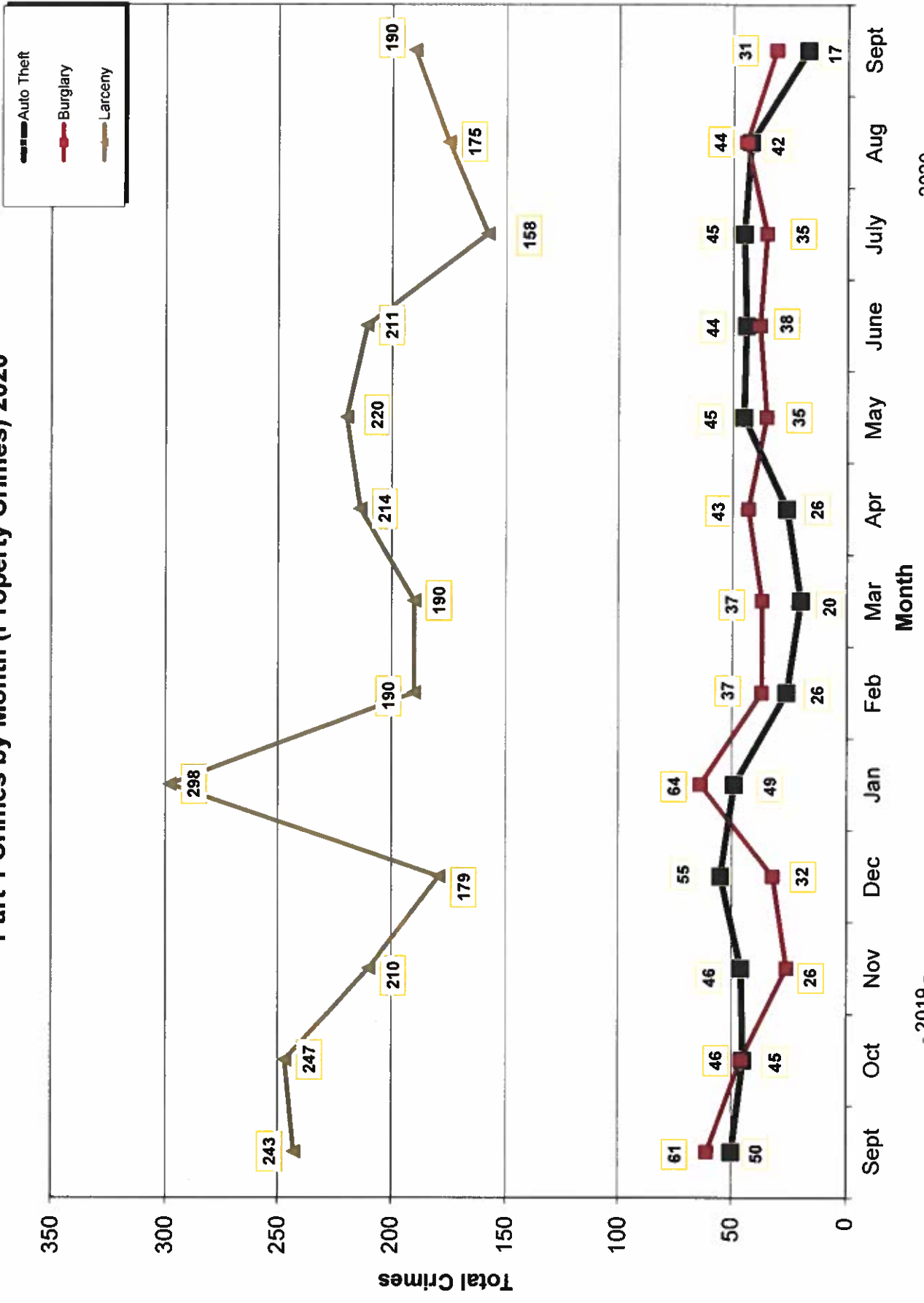
Calls for Service



**OCEANSIDE POLICE DEPARTMENT
FBI INDEX CRIMES**

	MONTHLY CASE ACTIVITY 2020												YEAR TO DATE COMPARISON		% CHANGE	
	JAN	FEB	MAR	APR	MAY	JUN	JUL	AUG	SEP	OCT	NOV	DEC	2019	2020		
													CHANGE	CHANGE		
1. HOMICIDE	Actual	2	0	0	1	1	0	1	0	0	0	0	4	5	1	25.0%
	Cleared	2	0	0	1	1	0	1	0	0	0	0	4	5	1	
2. RAPE	Actual	6	2	6	8	4	6	7	10	4	4	4	71	53	-18	-25.4%
	Cleared	0	0	0	0	0	0	2	1	0	0	0	10	3	-7	
3. ROBBERY	Actual	10	8	12	11	11	12	17	16	7	7	7	122	104	-18	-14.8%
	Cleared	5	2	6	4	2	4	6	6	4	4	4	40	39	-1	
4. AGGR. ASSAULT	Actual	27	38	33	38	60	49	44	36	47	47	47	323	372	49	15.2%
	Cleared	15	17	14	14	28	28	16	14	19	19	19	143	165	22	
5. BURGLARY	Actual	31	37	37	43	34	38	35	44	31	31	31	288	330	42	14.6%
	Cleared	5	3	3	6	9	6	6	4	2	2	2	24	44	20	
6. LARCENY THEFT	Actual	202	190	190	214	220	211	158	175	190	190	190	2211	1750	-461	-20.9%
	Cleared	22	9	15	11	16	15	13	12	12	12	12	157	125	-32	
7. AUTO THEFT	Actual	29	26	20	26	45	44	45	42	33	33	33	322	310	-12	-3.7%
	Cleared	2	3	3	0	2	0	3	4	6	6	6	24	23	-1	
TOTAL INDEX CRIMES	Actual	307	301	298	341	375	360	307	323	312	312	312	3341	2924	-417	-12.5%
	Cleared	51	34	41	36	58	53	47	41	43	43	43	402	404	2	
TOTAL PERSON CRIMES	Actual	45	48	51	58	76	67	69	62	58	58	58	520	534	14	2.7%
	Cleared	22	19	20	19	31	32	25	21	23	23	23	197	212	15	7.6%
TOTAL PROPERTY CRIMES	Actual	262	253	247	283	299	293	238	261	254	254	254	2821	2390	-431	-15.3%
	Cleared	29	15	21	17	27	21	22	20	20	20	20	205	192	-13	
ARSON	Actual	4	4	2	8	2	4	3	9	5	5	5	16	41	25	156.3%
Y-T-D Loss \$136,021	Cleared	0	2	1	6	0	1	2	6	3	3	3	8	21	13	162.5%

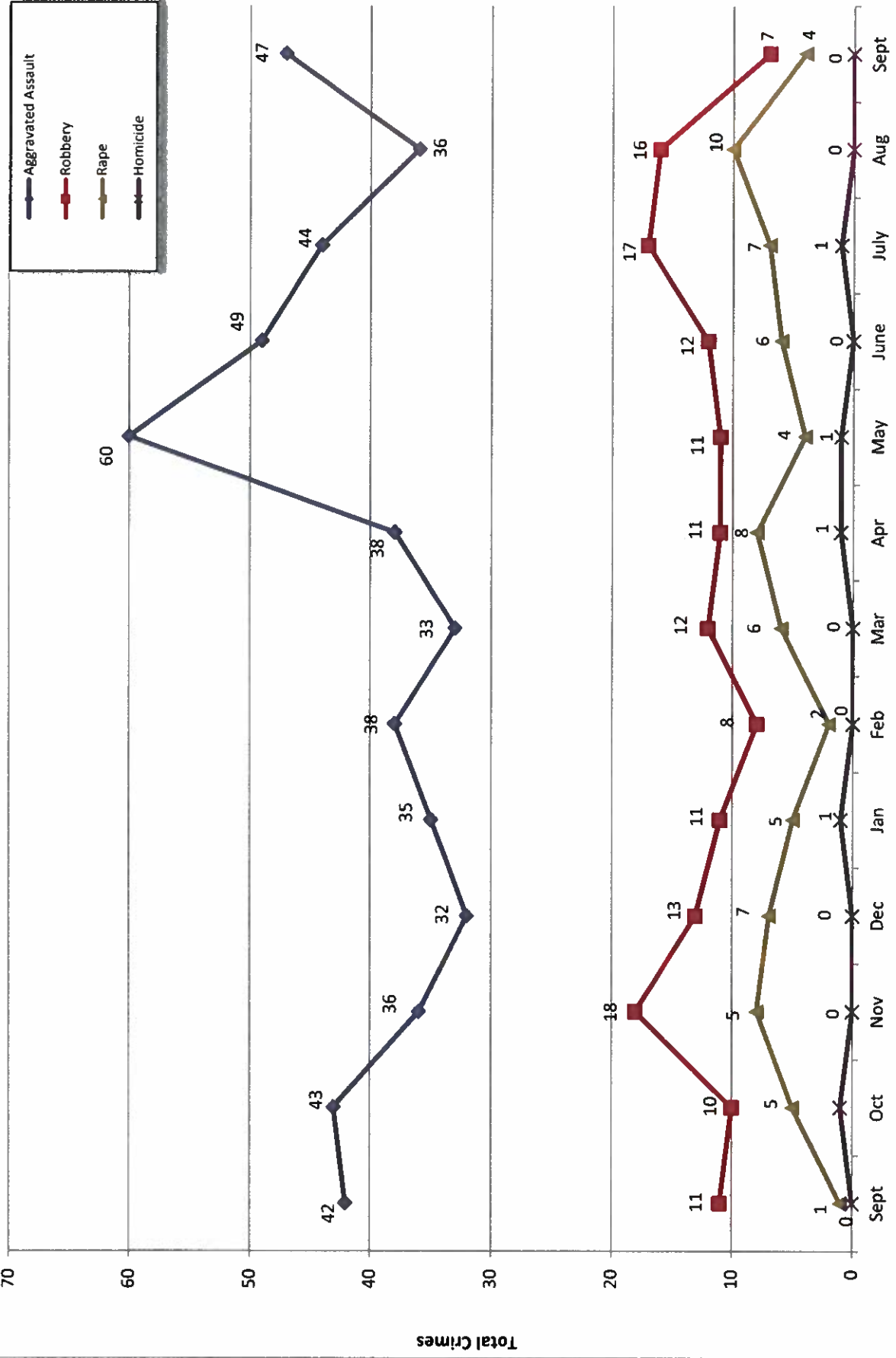
Part 1 Crimes by Month (Property Crimes) 2020



- 2020 -

- 2019 -

Part 1 Crimes by Month (Violent Crimes) 2020

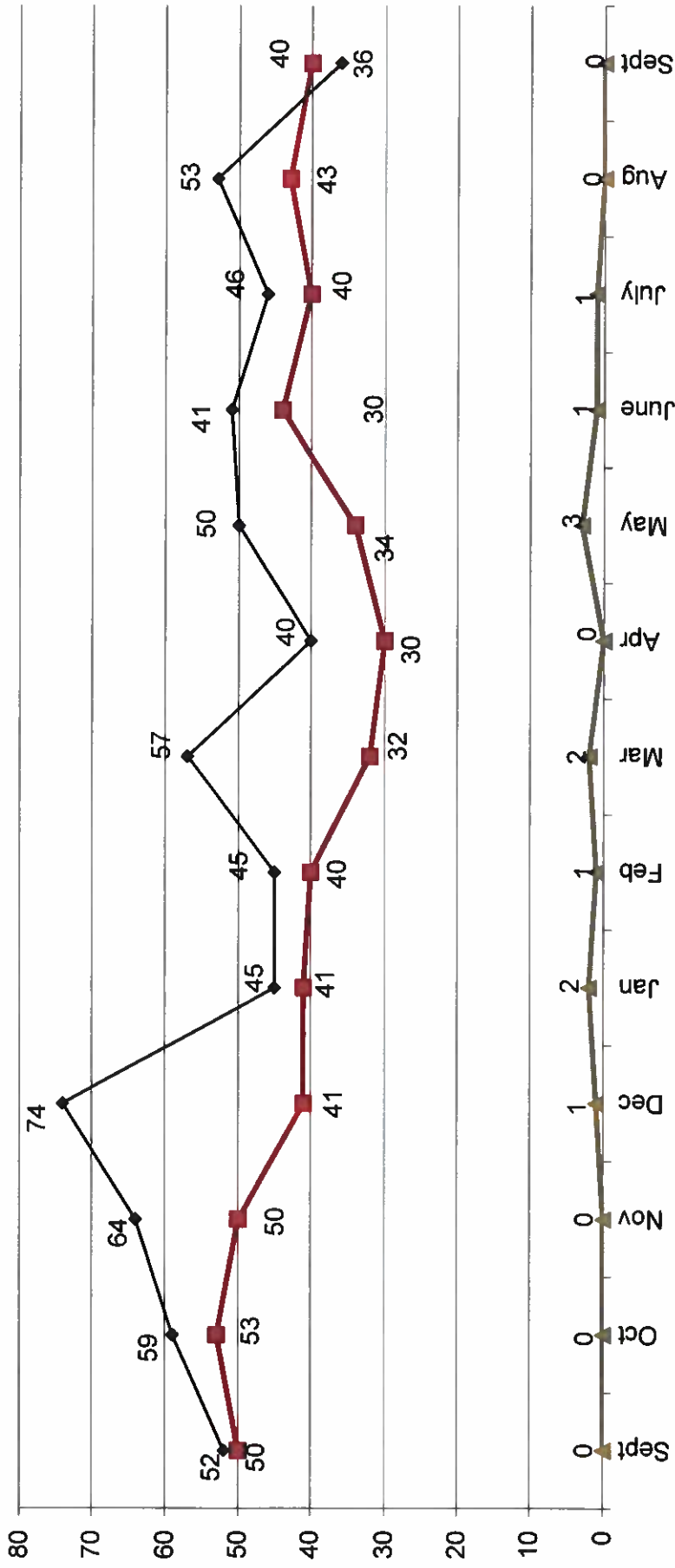


- 2019 -

Month

- 2020 -

Traffic Collisions 2019 - 2020





UCR Crimes by GeoArea

Required Parameters
 Reporting Period: Sep 2020
 Agency: OCEANSIDE

Optional Parameters
 Geographical Area: All Beats
 Group by: Agency Select by: Neighborhood

Prior Report Number: S1STA120

Neighborhood	MURDER	RAPE	RAPE (HISTORICAL)	ROBBERY--	AGGRVD	VIOLENT	RESID	NRESID	TOTAL	\$400+	<\$400	TOTAL	THEFT	CRM TL	PROPERTY	CRIME	CAR
			RAPE (HISTORICAL)	ROBBERY--	AGGRVD	VIOLENT	RESID	NRESID	TOTAL	\$400+	<\$400	TOTAL	THEFT	CRM TL	PROPERTY	CRIME	CAR
Agency = OCEANSIDE																	
AIRPORT	0	0	0	0	0	0	0	0	0	1	1	2	-1	1	1	1	2
EASTSIDE/CAPISTRANO	0	1	0	0	1	2	4	1	0	1	2	3	5	1	7	11	4
FIRE MOUNTAIN	0	0	0	0	-1	6	5	0	1	6	10	16	0	17	22	8	8
GUAJOME	0	0	0	0	0	2	2	0	0	9	9	18	0	18	20	6	6
IVY RAN/RAN DEL ORO	0	1	1	1	0	2	4	1	2	8	14	22	1	26	30	14	14
LAKE	0	0	0	1	1	5	7	1	0	3	4	7	2	10	17	2	2
MIRA COSTA	0	0	0	0	0	3	3	1	0	5	5	10	1	12	15	6	6
MISSN MESALOMA ALTA	0	1	1	0	0	1	2	2	4	2	11	13	1	18	20	9	9
MORRO HILLS	0	0	0	1	0	1	2	1	0	0	0	0	-1	0	2	0	0
NORTH VALLEY	0	1	0	1	0	1	3	0	3	4	5	9	1	13	16	6	6
OCEAN HILLS	0	0	0	0	0	0	0	0	0	4	2	6	0	6	6	2	2
OCEANA	0	0	0	0	0	1	1	0	0	0	5	5	1	6	7	4	4
SAN LU'S REY	0	0	0	0	1	5	6	1	1	5	9	14	3	19	25	8	8
SOUTH OCEANSIDE	0	0	0	0	0	0	0	4	2	4	13	17	0	23	23	6	6
TOWNSITE	0	0	0	1	0	12	13	2	5	21	19	40	7	54	67	14	14
TRI CITY	0	0	0	0	0	6	6	1	0	4	2	6	2	9	15	0	0
UNKNOWN	0	0	0	0	0	0	0	0	0	0	0	0	-1	-1	-1	0	0
SUB-TOTAL	0	4	2	5	2	47	58	18	31	78	112	190	17	238	296	91	91
GRAND TOTALS	0	4	2	5	2	47	58	18	31	78	112	190	17	238	296	91	91



UCR Crimes by GeoArea

Required Parameters
 Reporting Period: Jan 2020 to Sep 2020
 Agency: OCEANSIDE

Optional Parameters
 Geographical Area: All Beats
 Group by: Agency Select by: Neighborhood

Prior Report Number: S1STA120

Neighborhood	MURDER	RAPE	RAPE (HISTORICAL)	ROBBERY--	AGGRVD	VIOLENT	RESID	NRESID	TOTAL	\$400+	<\$400	TOTAL	THEFT	PROPERTY	CRIME	CAR
				ARMED	ST/ ARM	ASSAULT	CRM TL	RESID	NRESID	TOTAL	--LARCENY--	THEFT--	M.VEH	CRM TL	IDX TL	PROWL
Agency = OCEANSIDE																
AIRPORT	1	1	1	1	2	7	12	0	3	3	17	11	4	35	47	11
EASTSIDE/CAPISTRANO	0	6	1	4	3	34	47	8	5	13	27	47	24	111	158	36
FIRE MOUNTAIN	0	1	1	6	4	16	27	3	31	34	60	131	11	236	263	61
GUAJOME	0	4	1	2	0	13	19	5	1	6	46	65	13	130	149	37
IVY RAN/RAN DEL ORO	0	5	4	5	4	23	37	21	31	52	79	136	43	310	347	128
LAKE	0	1	0	4	4	14	23	6	3	9	35	79	22	145	168	37
MIRA COSTA	0	4	3	0	2	13	19	7	11	18	51	62	26	157	176	65
MISSN MESAILOMA ALTA	1	3	2	4	10	32	50	19	17	36	50	108	30	224	274	73
MORRO HILLS	0	0	0	1	0	8	9	5	2	7	2	12	4	25	34	8
NORTH VALLEY	0	2	0	4	2	30	38	13	3	16	24	50	11	101	139	46
OCEAN HILLS	0	1	1	0	0	2	3	3	3	6	18	13	2	39	42	15
OCEANA	0	0	0	0	0	6	6	3	2	5	7	18	2	32	38	15
SAN LUIS REY	1	7	6	3	8	40	59	32	8	40	57	89	34	220	279	61
SOUTH OCEANSIDE	0	2	2	3	5	10	20	11	9	20	40	67	12	139	159	44
TOWNSITE	2	11	8	9	10	101	133	25	36	61	110	166	44	381	514	98
TRI CITY	0	5	5	1	3	22	31	3	2	5	30	41	20	96	127	34
UNKNOWN	0	0	0	0	0	1	1	0	0	0	1	1	-1	1	2	2
SUB-TOTAL	5	53	35	47	57	372	534	164	167	331	654	1,096	301	2,382	2,916	771
GRAND TOTALS	5	53	35	47	57	372	534	164	167	331	654	1,096	301	2,382	2,916	771