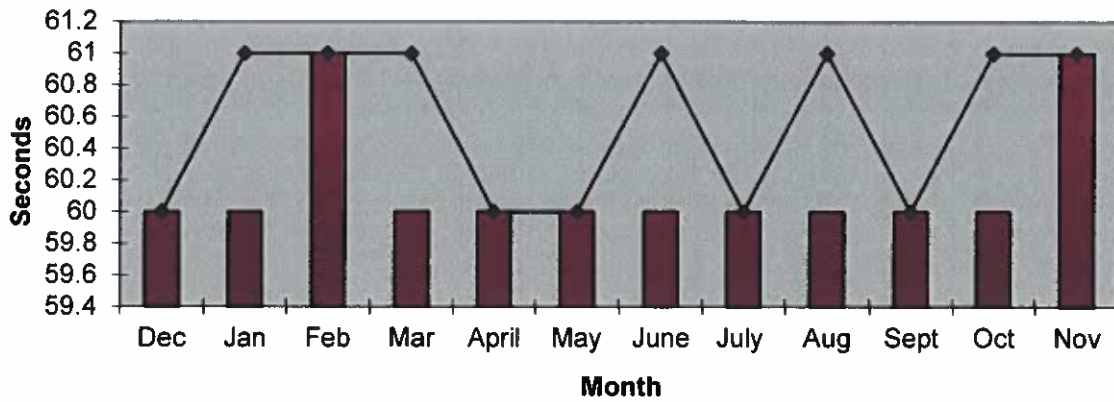
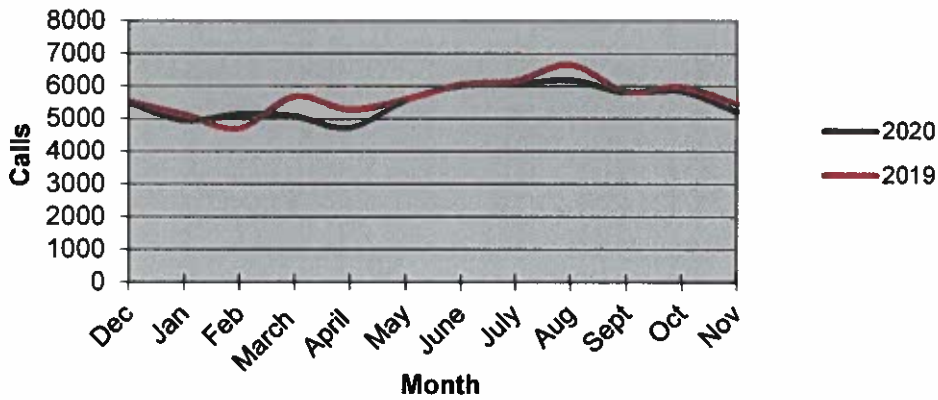


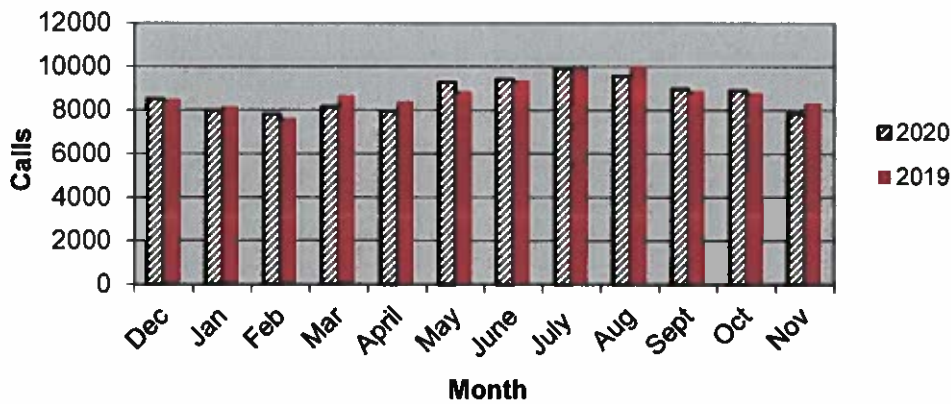
Priority 1 Dispatch Times- Police



911 Calls



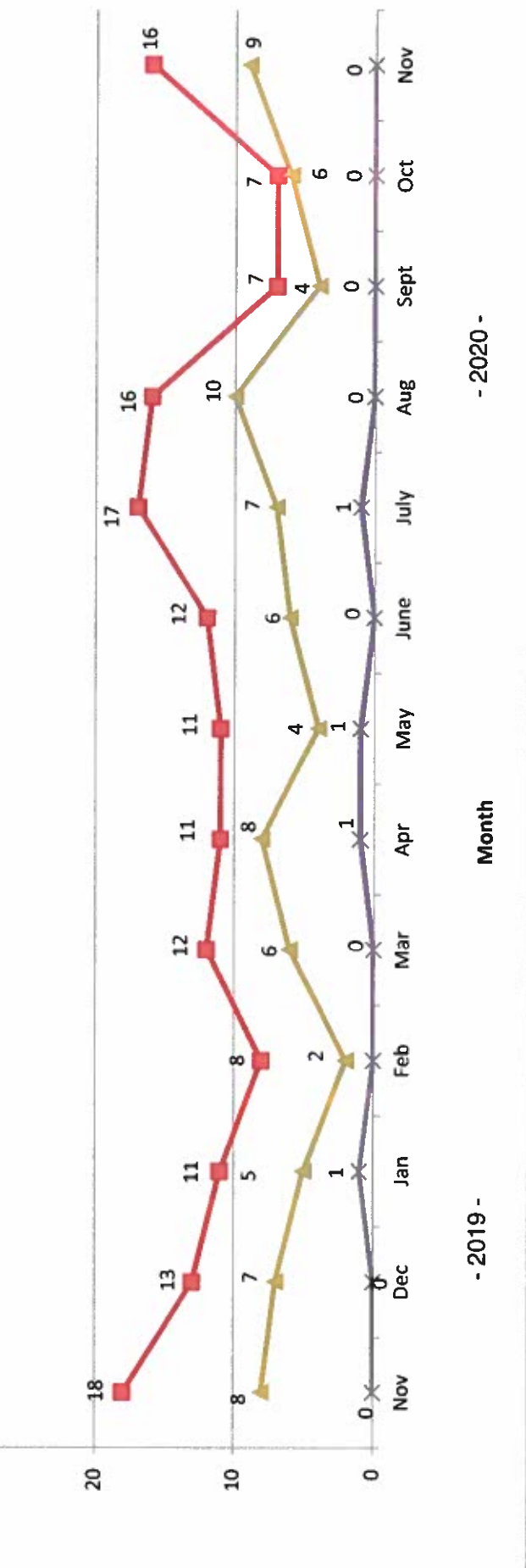
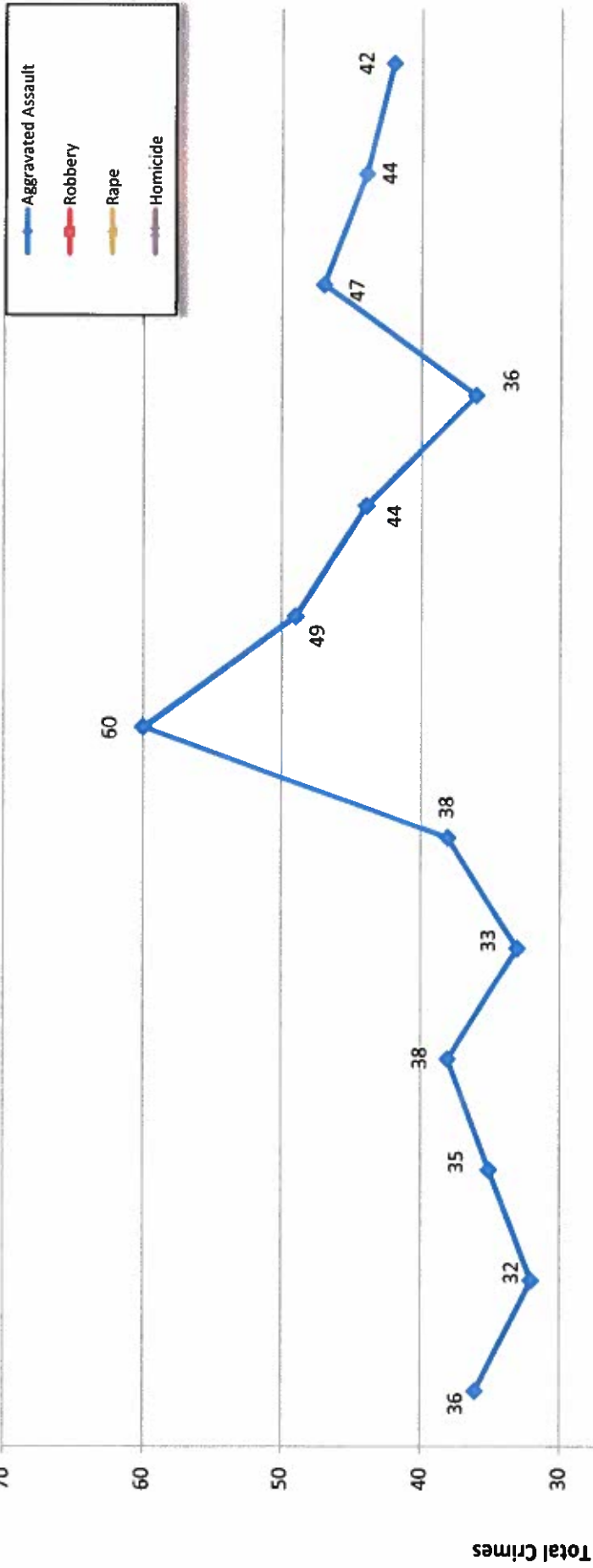
Calls for Service



**OCEANSIDE POLICE DEPARTMENT
FBI INDEX CRIMES**

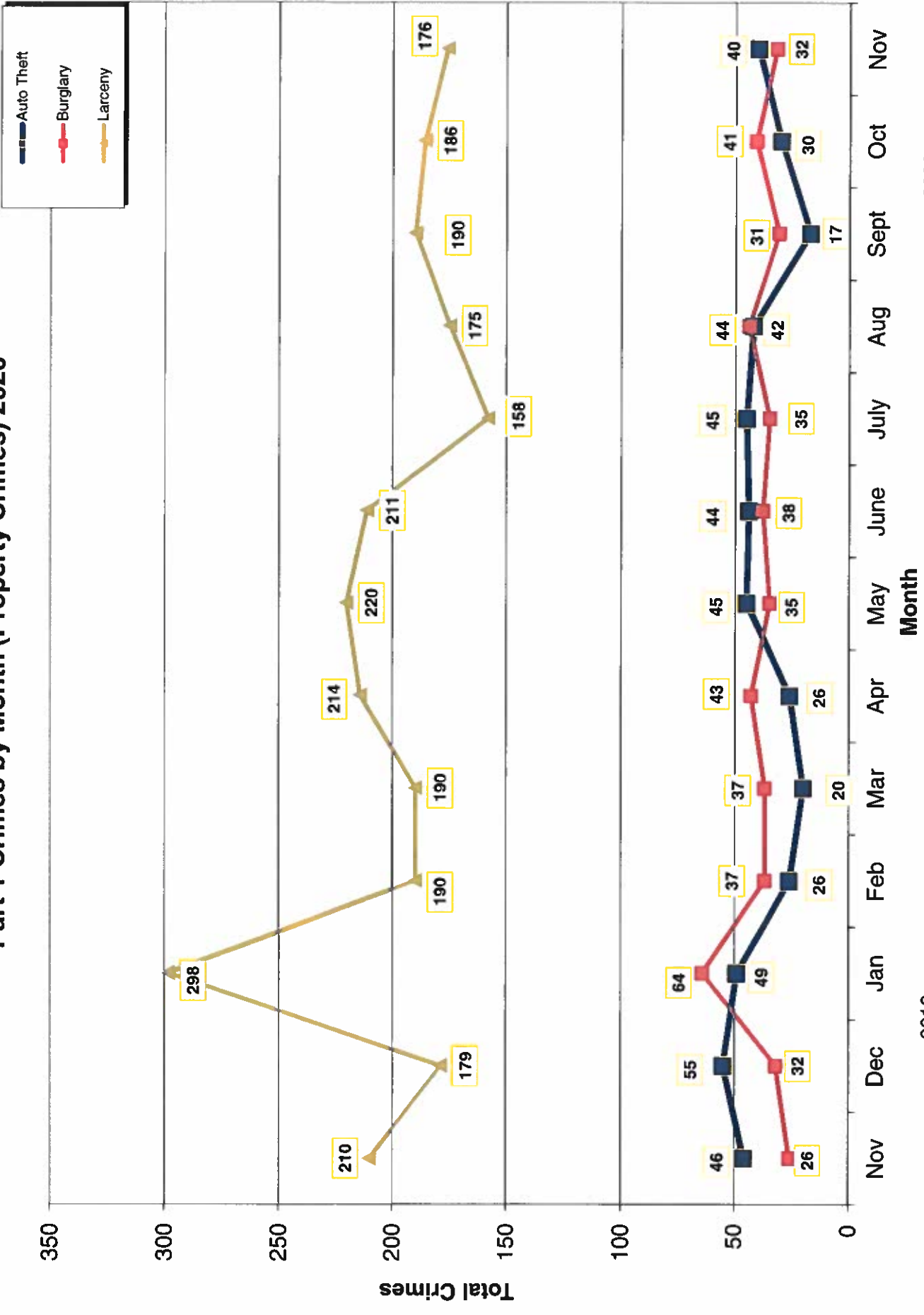
		MONTHLY CASE ACTIVITY 2020												YEAR TO DATE			% CHANGE			
		JAN	FEB	MAR	APR	MAY	JUN	JUL	AUG	SEP	OCT	NOV	DEC	2019	2020	CHANGE				
		COMPARISON																		
1. HOMICIDE	Actual	2	0	0	1	1	0	1	0	0	0	0	0	0	0	0	3	5	2	66.7%
	Cleared	2	0	0	1	1	0	1	0	0	0	0	0	0	0	0	4	5	1	25.0%
2. RAPE	Actual	6	2	6	8	4	6	7	10	4	6	6	9	9	9	9	90	68	-22	-24.4%
	Cleared	0	0	0	0	0	0	2	1	0	1	0	1	0	0	0	14	4	-10	-71.4%
3. ROBBERY	Actual	10	8	12	11	11	12	17	16	7	7	7	16	16	16	16	146	127	-19	-13.0%
	Cleared	5	2	6	4	2	4	6	6	4	3	0	0	0	0	0	51	42	-9	-17.6%
4. AGGR. ASSAULT	Actual	27	38	33	38	60	49	44	36	47	44	44	42	42	42	42	414	458	44	10.6%
	Cleared	15	17	14	14	28	28	16	14	19	25	12	12	12	12	12	187	202	15	8.0%
5. BURGLARY	Actual	31	37	37	43	34	38	35	44	31	41	41	32	32	32	32	382	403	21	5.5%
	Cleared	5	3	3	6	9	6	6	4	2	7	3	3	3	3	3	33	54	21	63.6%
6. LARCENY THEFT	Actual	202	190	190	214	220	211	158	175	190	186	176	176	176	176	176	2626	2112	-514	-19.6%
	Cleared	22	9	15	11	16	15	13	12	12	9	15	15	15	15	15	192	149	-43	-22.4%
7. AUTO THEFT	Actual	29	26	20	26	45	44	45	42	33	30	40	40	40	40	40	403	380	-23	-5.7%
	Cleared	2	3	3	0	2	0	3	4	6	3	3	3	3	3	3	30	29	-1	-3.3%
TOTAL INDEX CRIMES	Actual	307	301	298	341	375	360	307	323	312	314	315	315	315	315	315	4064	3553	-511	-12.6%
	Cleared	51	34	41	36	58	53	47	41	43	48	33	33	33	33	33	511	485	-26	-5.1%
TOTAL PERSON CRIMES	Actual	45	48	51	58	76	67	69	62	58	57	67	67	67	67	67	653	658	5	0.8%
	Cleared	22	19	20	19	31	32	25	21	23	29	12	12	12	12	12	256	253	-3	-1.2%
TOTAL PROPERTY CRIMES	Actual	262	253	247	283	299	293	238	261	254	257	248	248	248	248	248	3411	2895	-516	-15.1%
	Cleared	29	15	21	17	27	21	22	20	20	19	21	21	21	21	21	255	232	-23	-9.0%
ARSON	Actual	4	4	2	8	2	4	3	9	5	1	5	5	5	5	5	21	47	26	123.8%
Y-T-D Loss \$139,182	Cleared	0	2	1	6	0	1	2	6	3	0	2	2	2	2	2	10	23	13	130.0%

Part 1 Crimes by Month (Violent Crimes) 2020



- 2019 - Month - 2020 -

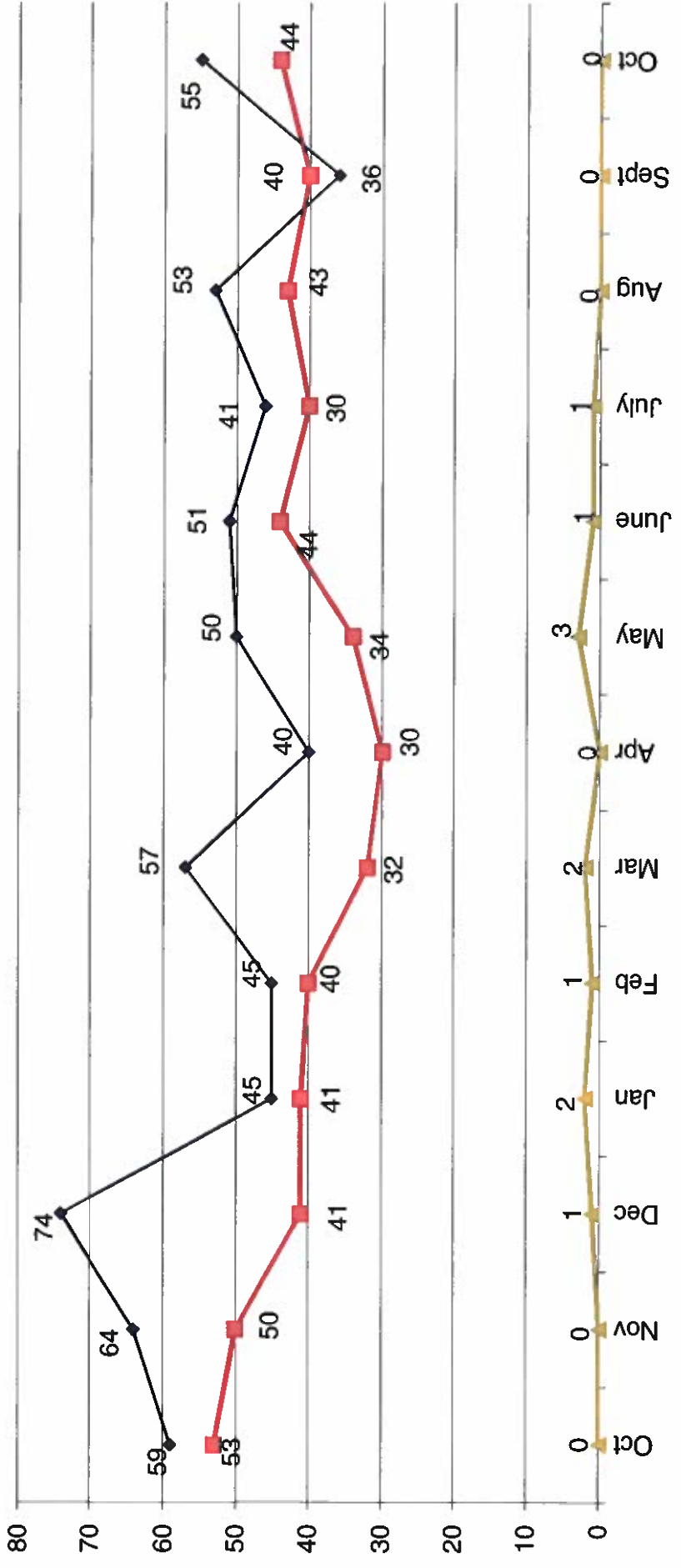
Part 1 Crimes by Month (Property Crimes) 2020



- 2019 -

- 2020 -

Traffic Collisions 2019 - 2020



-2019-

-2020-



UCR Crimes by GeoArea

Required Parameters
Reporting Period: Nov 2020
Agency: OCEANSIDE

Optional Parameters
Geographical Area: All Beats
Group by: Agency Select by: Neighborhood

Prior Report Number: S1STA120

Neighborhood	MURDER	RAPE	RAPE (HISTORICAL)	ROBBERY--	ARMED	ST/ ARM	ASSAULT	AGGRVD	VIOLENT	---BURGLARY----	RESID	NRESID	TOTAL	\$400+	<\$400	TOTAL	THEFT	CRM TL	IDX TL	CRIME	CAR	
Agency = OCEANSIDE																						
AIRPORT	0	2	1	0	1	1	1	1	4	0	0	0	0	1	1	2	0	2	6	2	1	
EASTSIDE/CAPISTRANO	0	0	0	1	1	1	5	7	7	1	1	2	2	3	6	9	4	15	22	15	6	
FIRE MOUNTAIN	0	0	0	1	0	0	3	4	4	2	2	4	4	6	6	12	1	17	21	17	3	
GUAJOME	0	0	0	0	0	0	0	0	0	1	0	1	1	9	8	17	1	19	19	19	9	
IVY RAIN/RAN DEL ORO	0	1	1	1	1	1	1	4	4	3	4	7	7	18	25	10	10	42	46	42	17	
LAKE	0	1	1	1	0	0	1	3	3	0	0	0	0	1	8	9	1	10	13	10	2	
MIRA COSTA	0	0	0	0	0	0	1	1	1	0	1	1	1	3	6	9	3	13	14	13	3	
MISSN MESALOMA ALTA	0	0	0	2	1	7	10	10	10	2	1	3	5	10	15	15	5	23	33	23	9	
MORRO HILLS	0	0	0	0	0	0	0	0	0	1	0	1	1	1	1	2	0	3	3	3	1	
NORTH VALLEY	0	1	0	0	0	2	3	3	3	1	0	1	1	0	5	5	3	9	12	9	1	
OCEAN HILLS	0	1	1	0	0	0	1	1	1	0	0	0	0	1	1	2	0	2	3	2	1	
OCEANA	0	0	0	0	0	0	0	0	0	1	0	1	1	1	1	2	0	3	3	3	2	
SAN LUIS REY	0	1	1	0	1	3	5	5	5	2	3	5	6	14	20	20	4	29	34	29	4	
SOUTH OCEANSIDE	0	0	0	1	0	5	6	6	6	0	0	0	0	4	7	11	1	12	18	12	4	
TOWNSITE	0	2	1	0	3	11	16	16	16	1	5	6	13	15	28	28	1	35	51	35	13	
TRI CITY	0	0	0	0	1	2	3	3	3	0	0	0	0	3	6	9	5	14	17	14	2	
UNKNOWN	0	0	0	0	0	0	0	0	0	0	0	0	0	-1	0	-1	1	0	0	0	0	
SUB-TOTAL	0	9	6	7	9	42	67	67	67	15	17	32	63	113	176	40	248	315	248	315	78	
GRAND TOTALS	0	9	6	7	9	42	67	67	67	15	17	32	63	113	176	40	248	315	248	315	78	



UCR Crimes by GeoArea

Required Parameters
 Reporting Period: Jan 2020 to Nov 2020
 Agency: OCEANSIDE

Optional Parameters
 Geographical Area: All Beats
 Group by: Agency Select by: Neighborhood

Prior Report Number: S1STA120

Neighborhood	MURDER	RAPE	RAPE (HISTORICAL)	ROBBERY--	ARMED	ST/ ARM	ASSAULT	VIOLENT	-----BURGLARY-----	---LARCENY-THEFT---	TOTAL	\$400+	<\$400	TOTAL	THEFT	CRM TL	PROPERTY	CRIME	CAR	
Agency = OCEANSIDE																				
AIRPORT	1	3	2	1	3	11	19	0	5	5	18	13	31	5	41	60	12			
EASTSIDE/CAPISTRANO	0	6	1	5	3	41	55	10	6	16	31	59	90	30	136	191	45			
FIRE MOUNTAIN	0	1	1	8	4	19	32	5	35	40	69	146	215	14	269	301	67			
GUAJOME	0	4	1	2	0	14	20	6	1	7	67	81	148	15	170	190	51			
IVY RAN/RAN DEL ORO	0	6	5	6	5	30	47	25	43	68	93	164	257	55	380	427	156			
LAKE	0	3	2	5	4	15	27	7	5	12	41	99	140	25	177	204	42			
MIRA COSTA	0	4	3	1	3	14	22	9	13	22	57	76	133	31	186	208	74			
MISSN MESALOMA ALTA	1	5	3	6	12	44	68	22	19	41	60	122	182	37	260	328	89			
MORRO HILLS	0	0	0	1	0	13	14	6	2	8	6	15	21	4	33	47	11			
NORTH VALLEY	0	3	0	4	2	34	43	17	3	20	24	62	86	15	121	164	50			
OCEAN HILLS	0	2	2	0	0	2	4	4	3	7	22	16	38	2	47	51	19			
OCEANA	0	0	0	0	0	6	6	6	2	8	9	21	30	3	41	47	19			
SAN LUIS REY	1	9	7	3	11	49	73	37	12	49	69	116	185	38	272	345	75			
SOUTH OCEANSIDE	0	3	3	4	5	17	29	14	9	23	48	79	127	17	167	196	50			
TOWNSITE	2	14	10	9	15	122	162	30	42	72	141	201	342	50	464	626	126			
TRICITY	0	5	5	1	4	26	36	3	3	6	36	49	85	30	121	157	39			
UNKNOWN	0	0	0	0	0	1	1	0	0	0	1	1	2	0	2	3	2			
SUB-TOTAL	5	68	45	56	71	458	658	201	203	404	792	1,320	2,112	371	2,887	3,545	927			
GRAND TOTALS	5	68	45	56	71	458	658	201	203	404	792	1,320	2,112	371	2,887	3,545	927			