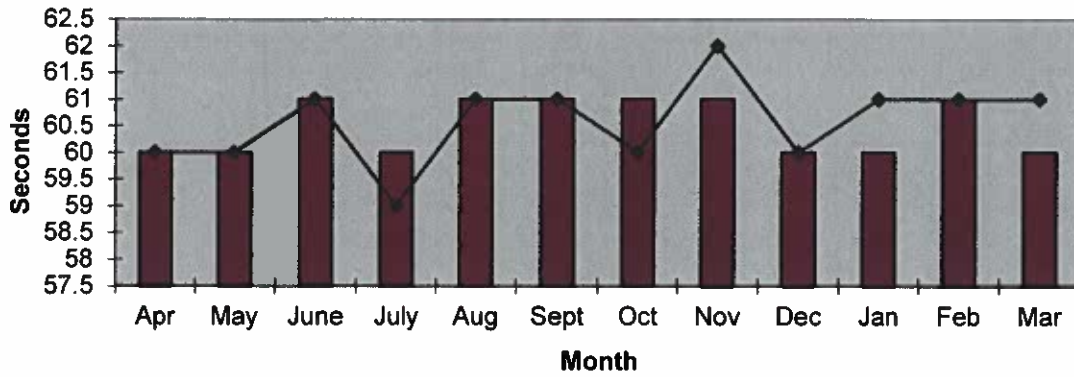
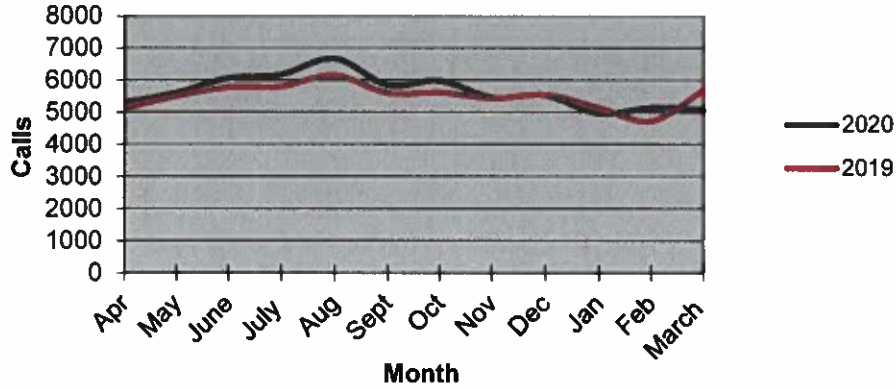


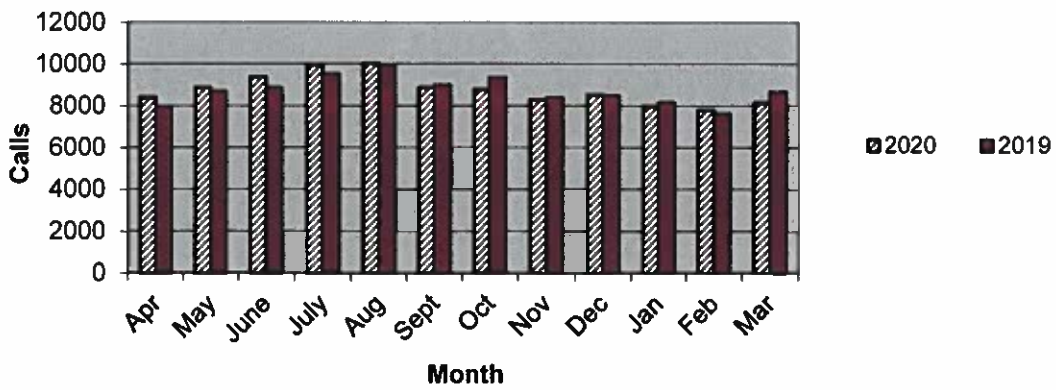
Priority 1 Dispatch Times- Police



911 Calls



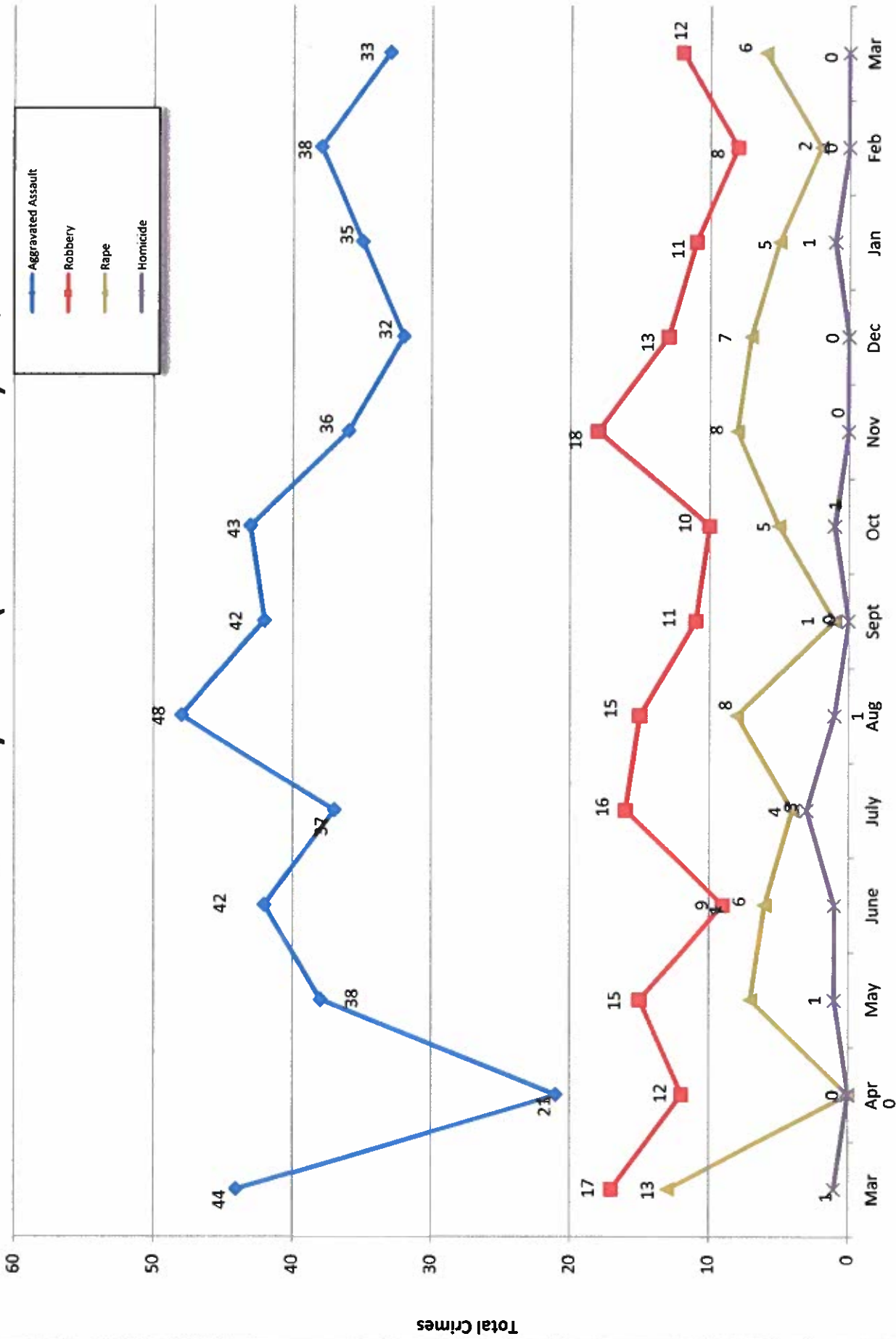
Calls for Service



OCEANSIDE POLICE DEPARTMENT FBI INDEX CRIMES

		MONTHLY CASE ACTIVITY 2020												YEAR TO DATE COMPARISON		% CHANGE			
		JAN	FEB	MAR	APR	MAY	JUN	JUL	AUG	SEP	OCT	NOV	DEC	2019	2020		CHANGE		
1. HOMICIDE	Actual	2	0	0												0	2	2	200.0%
	Cleared	2	0	0												0	2	2	200.0%
2. RAPE	Actual	6	2	6												18	14	-4	-22.2%
	Cleared	0	0	0												0	0	0	0.0%
3. ROBBERY	Actual	10	8	12												43	30	-13	-30.2%
	Cleared	5	2	6												12	13	1	8.3%
4. AGGR. ASSAULT	Actual	27	38	33												99	98	-1	-1.0%
	Cleared	15	17	14												43	46	3	7.0%
5. BURGLARY	Actual	31	37	37												102	105	3	2.9%
	Cleared	5	3	3												10	11	1	10.0%
6. LARCENY THEFT	Actual	202	190	190												694	582	-112	-16.1%
	Cleared	22	9	15												57	46	-11	-19.3%
7. AUTO THEFT	Actual	29	26	20												107	75	-32	-29.9%
	Cleared	2	3	3												8	8	0	0.0%
TOTAL INDEX CRIMES	Actual	307	301	298												1063	906	-157	-14.8%
	Cleared	51	34	41												130	126	-4	-3.1%
TOTAL PERSON CRIMES	Actual	45	48	51												160	144	-16	-10.0%
	Cleared	22	19	20												55	61	6	10.9%
TOTAL PROPERTY CRIMES	Actual	262	253	247												903	762	-141	-15.6%
	Cleared	29	15	21												75	65	-10	-13.3%
ARSON	Actual	4	4	2												8	10	2	25.0%
Y-T-D Loss \$77738.00	Cleared	0	2	1												4	3	-1	-25.0%

Part 1 Crimes by Month (Violent Crimes) 2020

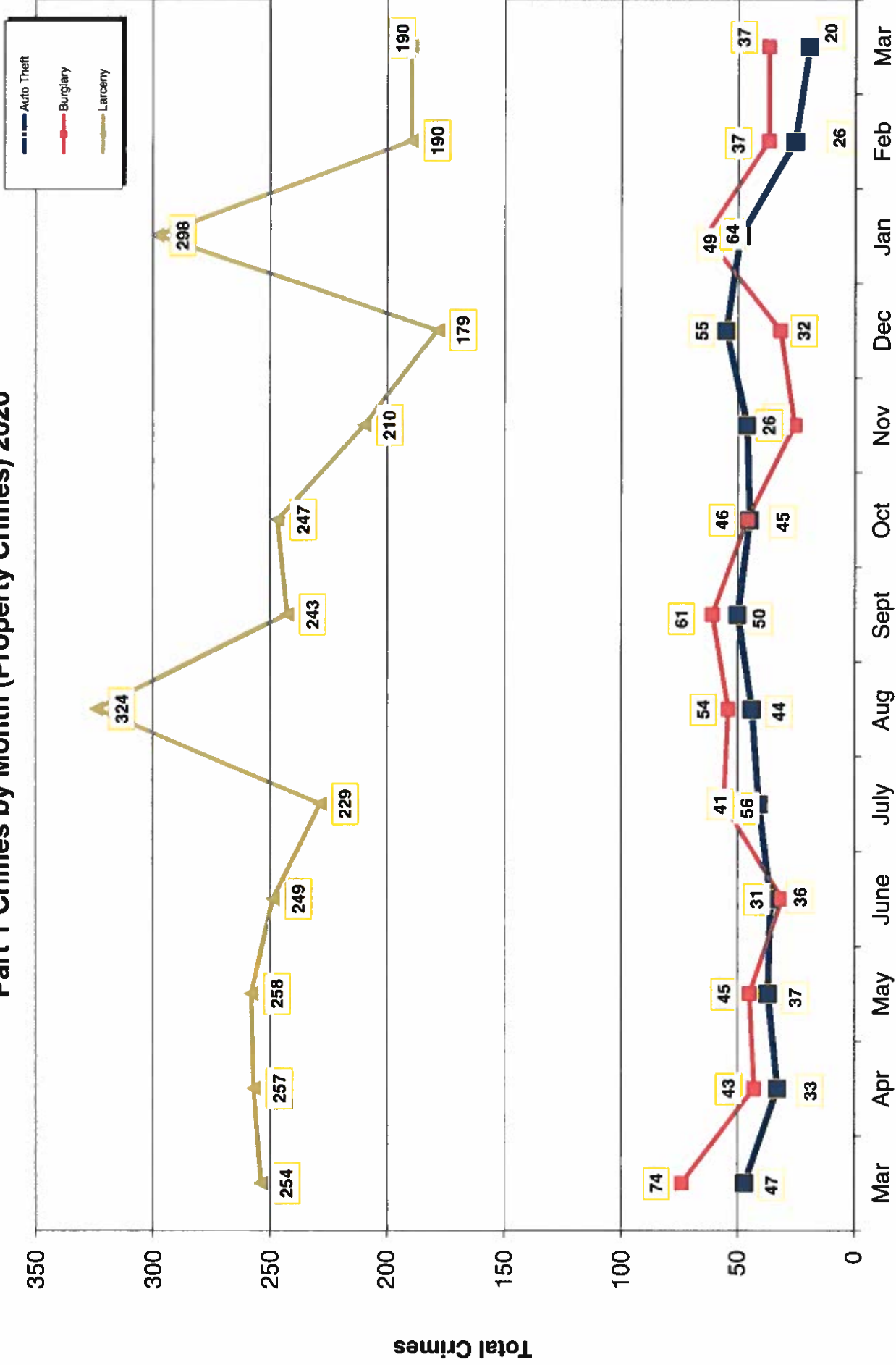


- 2020 -

Month

- 2019 -

Part 1 Crimes by Month (Property Crimes) 2020



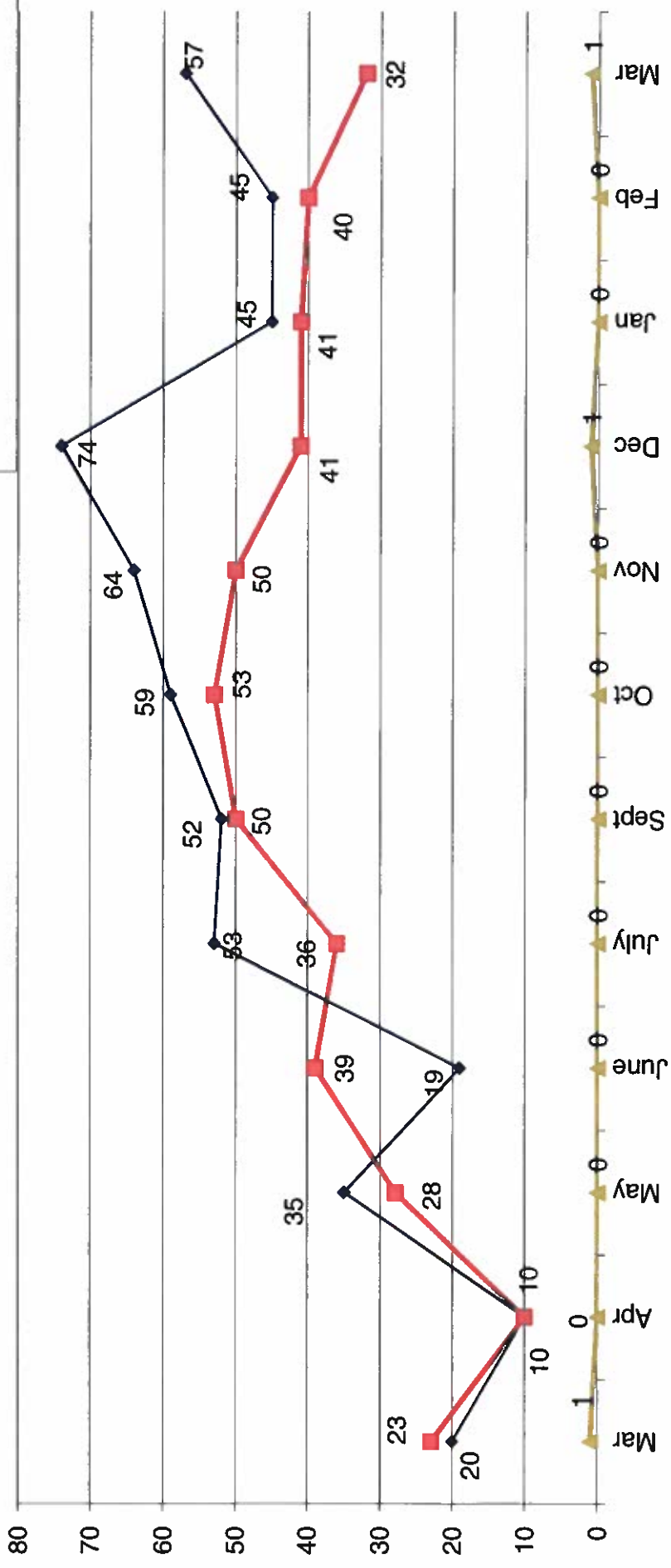
Month

- 2019 -

- 2020 -

Traffic Collisions 2019 - 2020

Property Damage Only Injury Fatalities



-2019-

-2020-



UCR Crimes by GeoArea

Required Parameters
 Reporting Period: Mar 2020
 Agency: OCEANSIDE

Optional Parameters
 Geographical Area: All Beats
 Group by: Agency Select by: Neighborhood

Prior Report Number: S1STA120

Neighborhood	MURDER	RAPE (HISTORICAL)	RAPE (ARMED)	ST/ARM	ASSAULT	AGGRVD	VIOLENT	BURGLARY	NRESID	TOTAL	\$400+	<\$400	LARCENY-THEFT	M.VEH	PROPERTY	CRIME	CAR
Agency = OCEANSIDE																	
AIRPORT	0	0	0	0	1	0	0	0	0	0	1	0	1	0	1	2	0
EASTSIDE/CAPISTRANO	0	0	0	0	2	2	1	0	1	3	3	6	0	0	7	9	3
FIRE MOUNTAIN	0	0	0	1	2	3	1	1	2	7	26	33	2	37	40	10	0
GUAJOME	0	0	2	0	2	4	0	0	0	4	5	9	0	9	13	4	0
IVY RAN/RAN DEL ORO	0	0	0	0	3	3	4	6	10	8	11	19	4	33	36	12	0
LAKE	0	0	1	0	0	1	1	0	1	3	9	12	0	13	14	5	0
MIRA COSTA	0	1	0	0	1	2	1	2	3	2	6	8	1	12	14	3	0
MISSN MESA/LOMA ALTA	0	1	0	0	4	5	2	1	3	6	14	20	0	23	28	9	0
MORRO HILLS	0	0	0	0	0	0	0	1	1	0	3	3	0	4	4	1	0
NORTH VALLEY	0	0	0	1	3	4	1	0	1	5	2	7	0	8	12	4	0
OCEAN HILLS	0	0	0	0	0	0	0	0	0	0	0	0	0	0	0	0	0
OCEANA	0	0	0	0	1	1	1	0	1	2	0	2	0	3	4	1	0
SAN LUIS REY	0	1	0	3	1	6	6	1	7	4	14	18	5	30	36	5	0
SOUTH OCEANSIDE	0	0	0	1	2	3	1	0	1	4	5	9	1	11	14	3	0
TOWNSITE	0	2	1	0	11	14	3	3	6	11	21	32	6	44	58	20	0
TRI CITY	0	1	1	0	1	2	0	0	0	4	6	10	1	11	13	4	0
UNKNOWN	0	0	0	0	0	0	0	0	0	1	0	1	0	1	1	1	0
SUB-TOTAL	0	6	3	4	8	33	51	22	15	37	65	125	190	20	247	298	85
GRAND TOTALS	0	6	3	4	8	33	51	22	15	37	65	125	190	20	247	298	85



UCR Crimes by GeoArea

Required Parameters
Reporting Period: Jan 2020 to Mar 2020
Agency: OCEANSIDE

Optional Parameters
Geographical Area: All Beats
Group by: Agency Select by: Neighborhood

Prior Report Number: S1STA120

Neighborhood	MURDER	RAPE	RAPE (HISTORICAL)	ROBBERY--	RAPE ARMED	ST/ ARM	ASSAULT	CRM TL	RESID	NRESID	TOTAL	\$400+	<\$400	TOTAL	THEFT	CRM TL	IDX TL	CRIME	CAR	
Agency = OCEANSIDE																				
AIRPORT	0	0	0	0	0	1	3	4	0	0	0	4	3	7	-2	5	9	2		
EASTSIDE/CAPISTRANO	0	2	0	0	2	0	9	13	3	-1	2	10	18	28	9	39	52	13		
FIRE MOUNTAIN	0	0	0	0	1	2	1	4	3	8	11	29	71	100	5	116	120	26		
GUAJOME	0	0	0	0	2	0	4	6	3	0	3	10	10	20	3	26	32	8		
IVY RAN/RAN DEL ORO	0	0	0	0	2	2	6	8	9	15	24	27	45	72	13	109	117	34		
LAKE	0	0	0	0	2	0	4	6	3	1	4	13	35	48	8	60	66	19		
MIRA COSTA	0	2	0	2	0	1	4	7	2	2	4	14	22	36	4	44	51	14		
MISSN MESALOMA ALTA	0	2	1	0	1	1	10	13	13	5	18	19	41	60	3	81	94	21		
MORRO HILLS	0	0	0	0	0	0	3	3	0	1	1	1	7	8	2	11	14	4		
NORTH VALLEY	0	0	0	0	0	2	6	8	4	1	5	4	5	9	2	16	24	6		
OCEAN HILLS	0	0	0	0	0	0	1	1	1	1	2	3	4	7	0	9	10	3		
OCEANA	0	0	0	0	0	0	4	4	1	0	1	5	2	7	1	9	13	4		
SAN LUIS REY	1	2	1	1	1	3	9	16	15	1	16	18	29	47	11	74	90	16		
SOUTH OCEANSIDE	0	2	2	1	2	2	2	7	1	1	2	9	13	22	5	29	36	7		
TOWNSITE	1	3	2	2	3	3	31	40	4	6	10	35	52	87	14	111	151	40		
TRI CITY	0	1	1	0	2	1	1	4	0	2	2	11	12	23	4	29	33	10		
UNKNOWN	0	0	0	0	0	0	0	0	0	0	0	1	0	1	0	1	1	1		
SUB-TOTAL	2	14	9	11	19	19	98	144	62	43	105	213	369	682	82	769	913	228		
GRAND TOTALS	2	14	9	11	19	19	98	144	62	43	105	213	369	682	82	769	913	228		