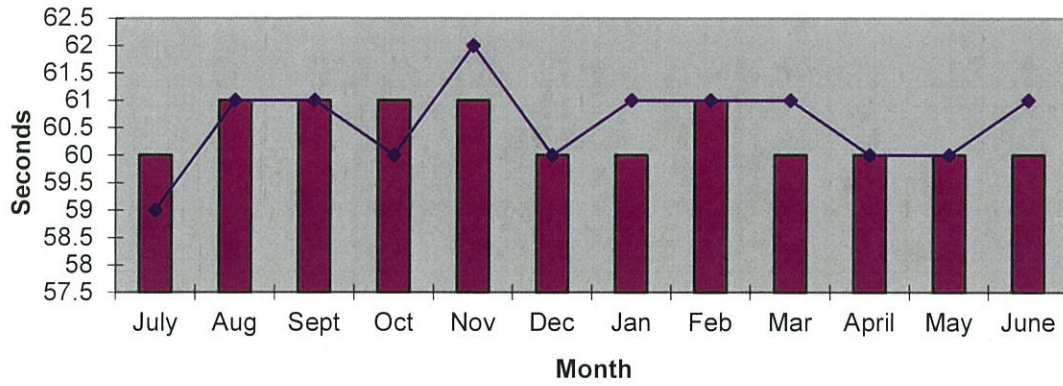
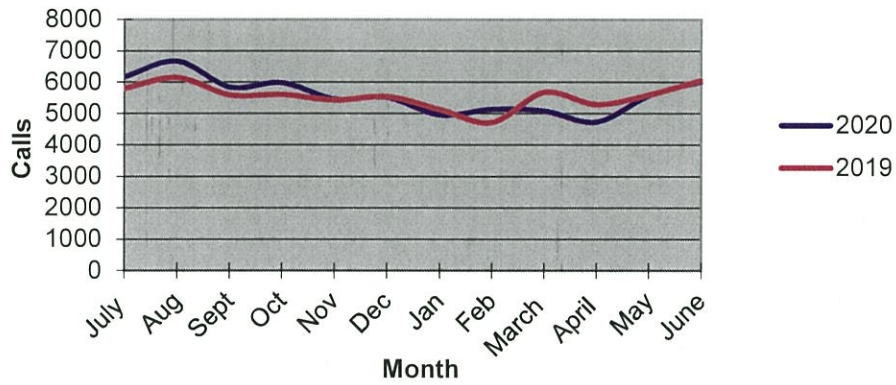


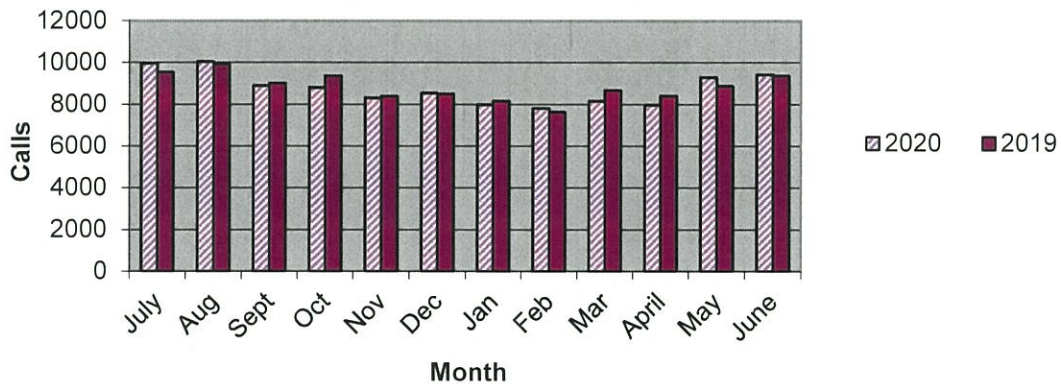
Priority 1 Dispatch Times- Police



911 Calls



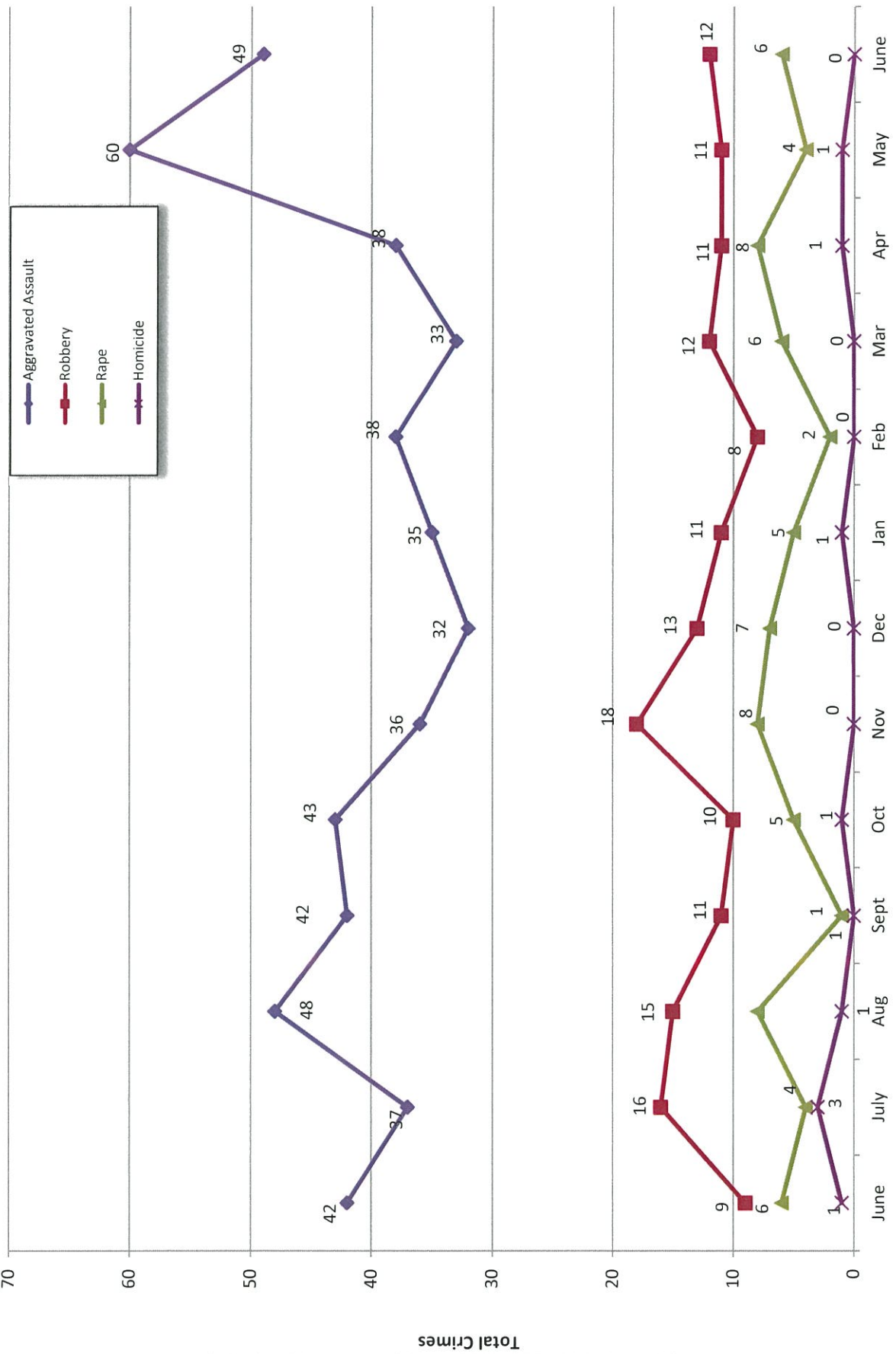
Calls for Service



**OCEANSIDE POLICE DEPARTMENT
FBI INDEX CRIMES**

	MONTHLY CASE ACTIVITY 2020												YEAR TO DATE COMPARISON		% CHANGE	
	JAN	FEB	MAR	APR	MAY	JUN	JUL	AUG	SEP	OCT	NOV	DEC	2019	2020		
	Actual	Cleared	Actual	Cleared	Actual	Cleared	Actual	Cleared	Actual	Cleared	Actual	Cleared				
1. HOMICIDE	2	0	0	1	1	0	0	0	0	0	0	0	2	4	2	100.0%
	2	0	0	1	1	0	0	0	0	0	0	0	2	4	2	100.0%
2. RAPE	6	2	6	8	4	6	6	8	4	6	0	0	43	32	-11	-25.6%
	0	0	0	0	0	0	0	0	0	0	0	0	5	0	-5	-100.0%
3. ROBBERY	10	8	12	11	11	12	12	11	11	12	12	12	78	64	-14	-17.9%
	5	2	6	4	2	4	4	4	2	4	4	4	27	23	-4	-14.8%
4. AGGR. ASSAULT	27	38	33	38	60	49	49	60	60	49	49	49	196	245	49	25.0%
	15	17	14	14	28	28	28	28	28	28	28	28	86	116	30	34.9%
5. BURGLARY	31	37	37	43	34	38	38	43	34	38	38	38	191	220	29	15.2%
	5	3	3	6	9	6	6	9	6	6	6	6	18	32	14	77.8%
6. LARCENY THEFT	202	190	190	214	220	211	211	214	220	211	211	211	1405	1227	-178	-12.7%
	22	9	15	11	16	15	15	11	16	15	15	15	110	88	-22	-20.0%
7. AUTO THEFT	29	26	20	26	45	44	44	26	45	44	44	44	214	190	-24	-11.2%
	2	3	3	0	2	0	0	0	2	0	0	0	16	10	-6	-37.5%
TOTAL INDEX CRIMES	307	301	298	341	375	360	360	341	375	360	360	360	2129	1982	-147	-6.9%
	51	34	41	36	58	53	53	36	58	53	53	53	264	273	9	3.4%
TOTAL PERSON CRIMES	45	48	51	58	76	67	67	58	76	67	67	67	319	345	26	8.2%
	22	19	20	19	31	32	32	19	31	32	32	32	120	143	23	19.2%
TOTAL PROPERTY CRIMES	262	253	247	283	299	293	293	283	299	293	293	293	1810	1637	-173	-9.6%
	29	15	21	17	27	21	21	17	27	21	21	21	144	130	-14	-9.7%
ARSON	4	4	2	8	2	4	4	8	2	4	4	4	10	24	14	140.0%
Y-T-D Loss \$118,945	0	2	1	6	0	1	1	6	0	1	1	1	6	10	4	66.7%

Part 1 Crimes by Month (Violent Crimes) 2020

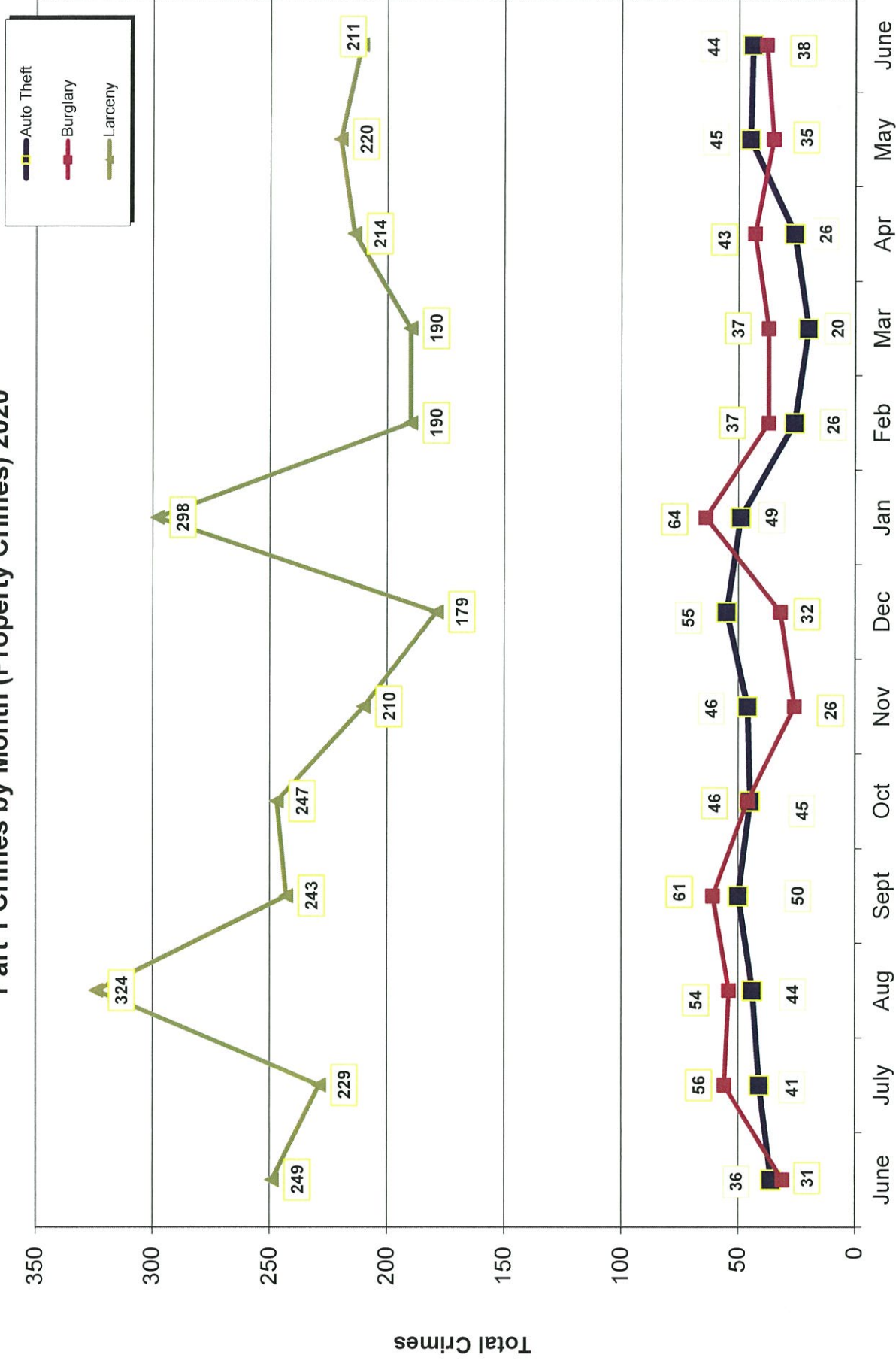


- 2020 -

Month

- 2019 -

Part 1 Crimes by Month (Property Crimes) 2020



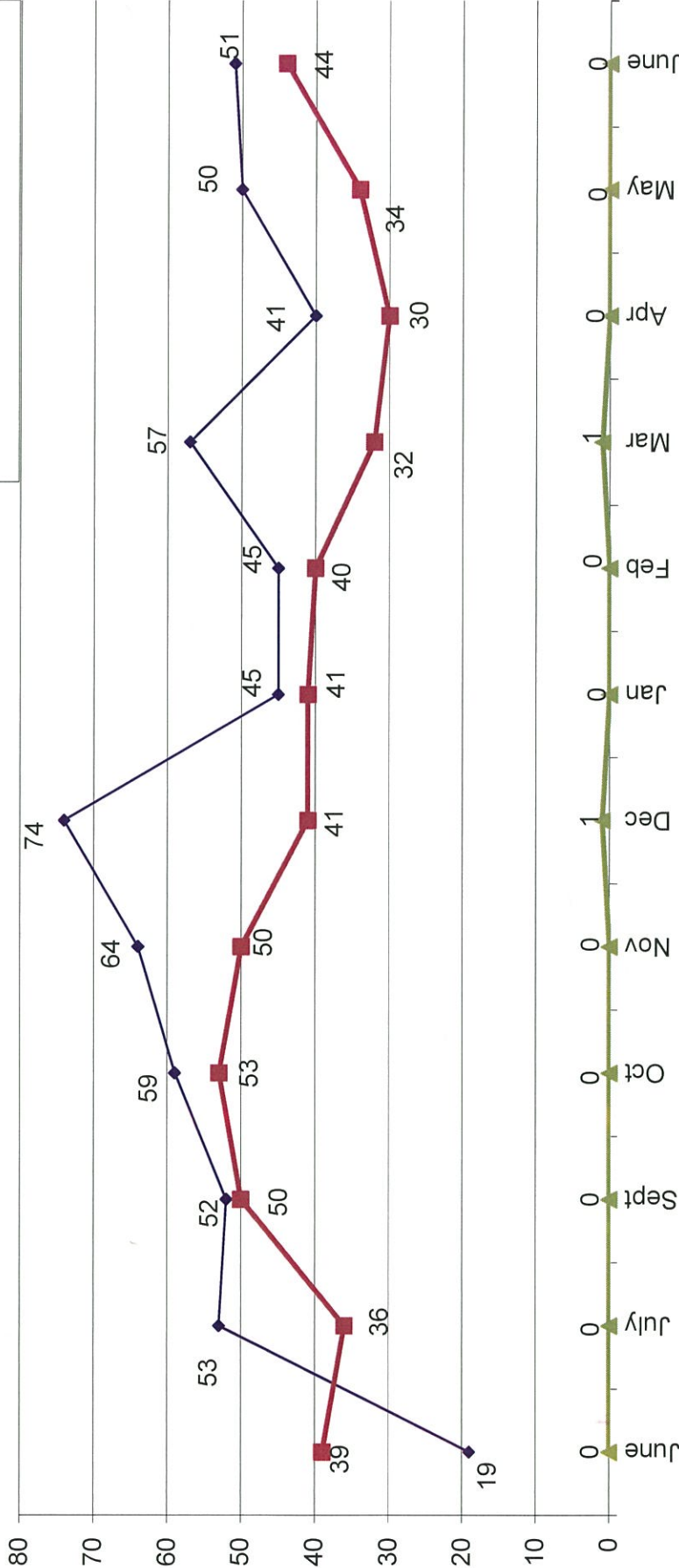
Month

- 2019 -

- 2020 -

Traffic Collisions 2019 - 2020

Property Damage Only Injury Fatalities



-2019-

-2020-



UCR Crimes by GeoArea

Required Parameters
 Reporting Period: Jun 2020
 Agency: OCEANSIDE

Optional Parameters
 Geographical Area: All Beats
 Group by: Agency **Select by: Neighborhood**

Prior Report Number: S1STA120

Neighborhood	MURDER	RAPE (HISTORICAL)	RAPE (HISTORICAL)	ROBBERY--	AGGRVD	VIOLENT	RESID	NRESID	TOTAL	\$400+	<\$400	TOTAL	THEFT	CRM TL	IDX TL	CRIME	CAR
			ARMED	ST/ ARM	ASSAULT	CRM TL	RESID	NRESID	TOTAL	\$400+	<\$400	TOTAL	THEFT	CRM TL	IDX TL	CRIME	CAR
Agency = OCEANSIDE																	
AIRPORT	0	0	0	0	0	-1	0	1	1	6	2	8	2	11	10	4	4
EASTSIDE/CAPISTRANO	0	1	0	0	3	4	0	2	2	2	4	6	3	11	15	3	3
FIRE MOUNTAIN	0	0	1	1	1	3	0	1	1	2	13	15	3	19	22	8	8
GUAJOME	0	0	0	0	1	1	0	0	0	5	5	10	2	12	13	3	3
IVY RAN/RAN DEL ORO	0	1	0	0	3	4	1	6	7	11	16	27	6	40	44	20	20
LAKE	0	0	0	1	0	1	0	1	1	7	13	20	2	23	24	1	1
MIRA COSTA	0	1	1	0	2	4	2	2	4	11	7	18	7	29	33	9	9
MISSN MESA/LOMA ALTA	0	0	0	1	4	5	1	3	4	5	13	18	6	28	33	7	7
MORRO HILLS	0	0	0	0	1	1	2	1	3	0	1	1	1	5	6	1	1
NORTH VALLEY	0	0	0	0	4	4	2	0	2	5	12	17	1	20	24	14	14
OCEAN HILLS	0	0	0	0	1	1	0	0	0	2	1	3	0	3	4	1	1
OCEANA	0	0	0	0	0	0	1	0	1	0	3	3	0	4	4	1	1
SAN LUIS REY	0	0	0	1	10	11	0	2	2	8	12	20	4	26	37	10	10
SOUTH OCEANSIDE	0	0	0	3	1	4	0	0	0	6	5	11	0	11	15	3	3
TOWNSITE	0	2	2	1	15	20	5	5	10	11	19	30	4	44	64	7	7
TRI CITY	0	1	1	0	3	4	0	0	0	2	1	3	3	6	10	3	3
UNKNOWN	0	0	0	0	1	1	0	0	0	0	1	1	0	1	2	1	1
SUB-TOTAL	0	6	4	2	10	67	14	24	38	83	128	211	44	293	360	96	96
GRAND TOTALS	0	6	4	2	10	67	14	24	38	83	128	211	44	293	360	96	96



UCR Crimes by GeoArea

Required Parameters
 Reporting Period: Jan 2020 to Jun 2020
 Agency: OCEANSIDE

Optional Parameters
 Geographical Area: All Beats
 Group by: Agency Select by: Neighborhood

Prior Report Number: S1STA120

Neighborhood	MURDER	RAPE (HISTORICAL)	RAPE	ROBBERY--	ARMED	ST/ ARM	ASSAULT	VIOLENT	BURGLARY	NRESID	TOTAL	\$400+	<\$400	TOTAL	THEFT	CRM TL	IDX TL	CRIME	CAR
Agency = OCEANSIDE																			
AIRPORT	0	0	0	1	1	1	7	9	0	1	1	15	8	23	2	26	35	8	
EASTSIDE/CAPISTRANO	0	3	0	3	0	0	24	30	4	2	6	16	34	50	17	73	103	24	
FIRE MOUNTAIN	0	0	0	3	3	3	9	15	3	23	26	43	112	155	9	190	205	47	
GUAJOME	0	1	1	2	0	0	9	12	4	0	4	29	43	72	7	83	95	18	
IVY RAN/RAN DEL ORO	0	2	1	3	2	2	16	23	17	25	42	60	105	165	29	236	259	97	
LAKE	0	1	0	3	2	2	7	13	5	2	7	22	62	84	17	108	121	27	
MIRA COSTA	0	4	3	0	2	2	10	16	5	8	13	36	52	88	17	118	134	48	
MISSN MESA/LOMA ALTA	1	2	1	2	5	5	26	36	16	11	27	38	83	121	17	165	201	53	
MORRO HILLS	0	0	0	0	0	0	4	4	4	2	6	2	12	14	5	25	29	8	
NORTH VALLEY	0	0	0	1	2	2	16	19	9	3	12	15	27	42	7	61	80	29	
OCEAN HILLS	0	0	0	0	0	0	2	2	2	2	4	8	7	15	1	20	22	8	
OCEANA	0	0	0	0	0	0	4	4	3	0	3	7	8	15	1	19	23	8	
SAN LUIS REY	1	5	4	2	4	4	29	41	22	4	26	36	60	96	23	145	186	37	
SOUTH OCEANSIDE	0	2	2	2	5	5	6	15	3	6	9	27	37	64	8	81	96	23	
TOWNSITE	2	8	7	6	6	6	64	86	17	15	32	68	109	177	24	233	319	64	
TRI CITY	0	4	4	1	3	3	11	19	1	2	3	17	27	44	13	60	79	25	
UNKNOWN	0	0	0	0	0	0	1	1	0	0	0	1	1	2	0	2	3	2	
SUB-TOTAL	4	32	23	29	35	245	345	115	105	221	440	787	1,227	197	1,645	1,990	526		
GRAND TOTALS	4	32	23	29	35	245	345	115	105	221	440	787	1,227	197	1,645	1,990	526		