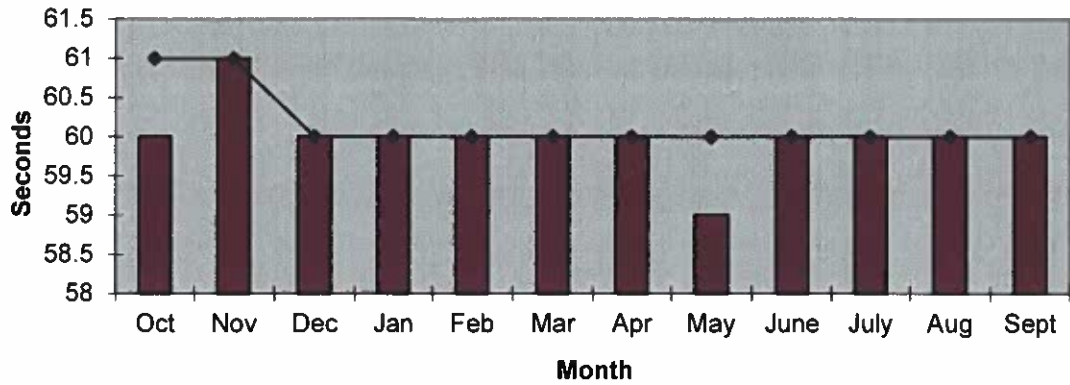
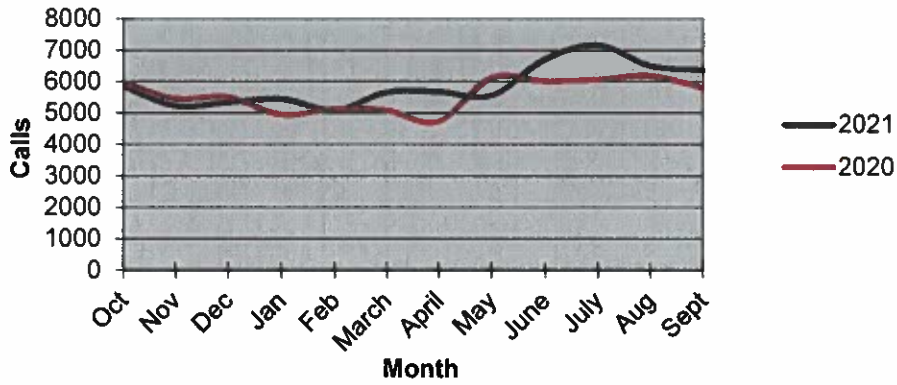


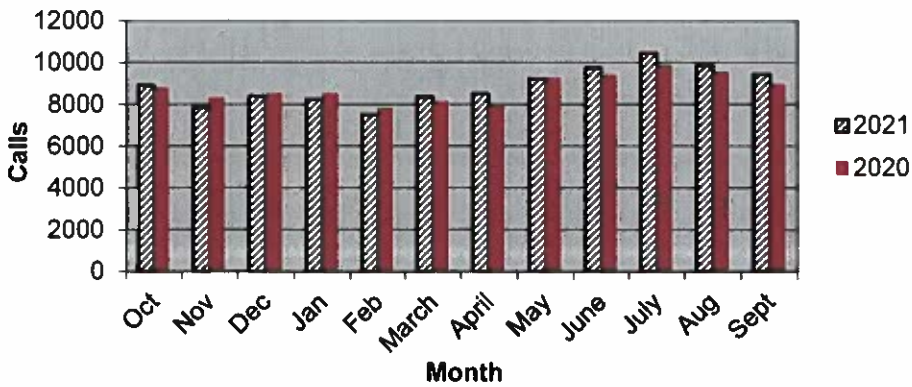
Priority 1 Dispatch Times- Police



911 Calls



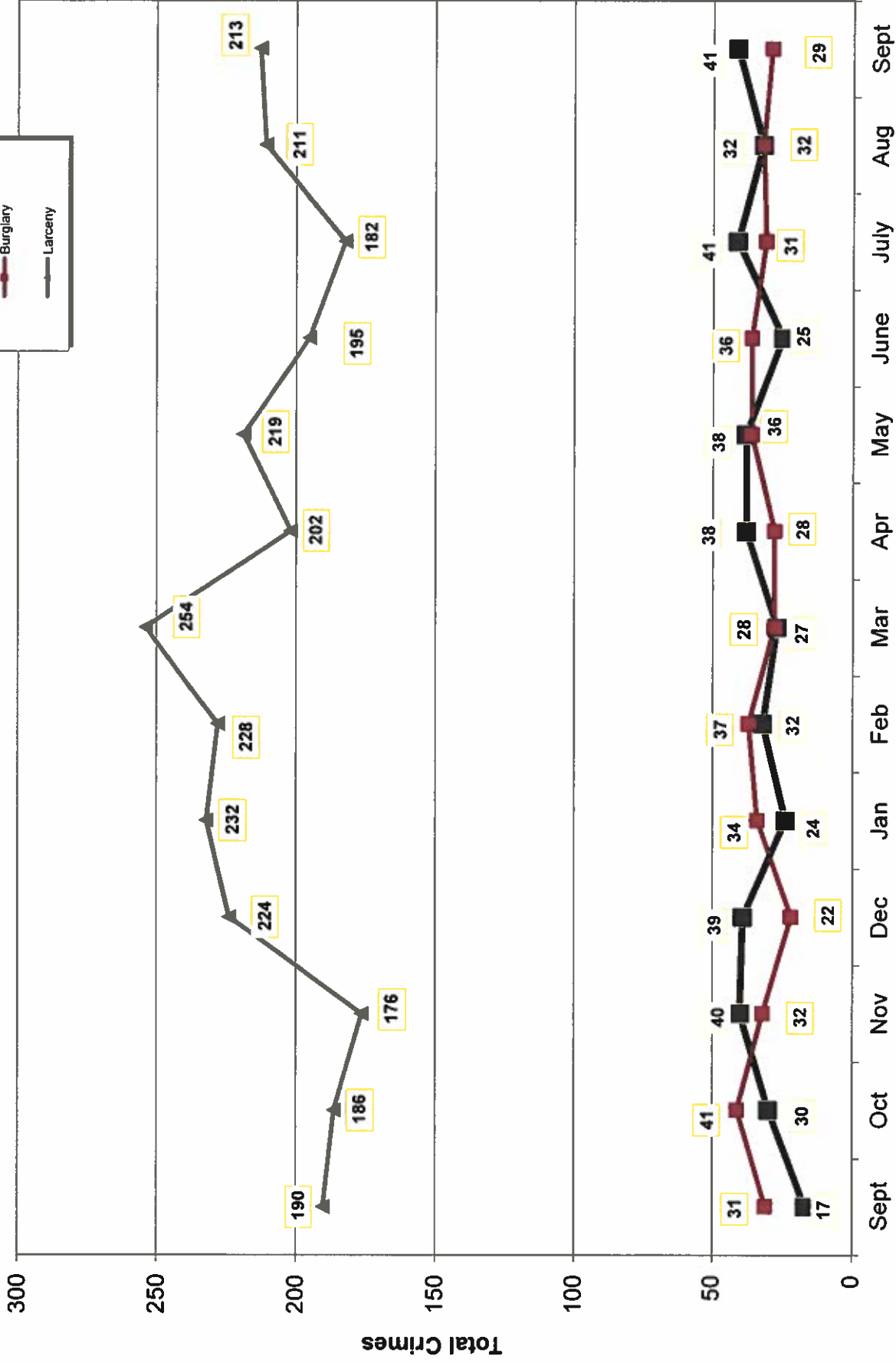
Calls for Service



**OCEANSIDE POLICE DEPARTMENT
FBI INDEX CRIMES**

		MONTHLY CASE ACTIVITY 2021												YEAR TO DATE COMPARISON		% CHANGE	
		JAN	FEB	MAR	APR	MAY	JUN	JUL	AUG	SEP	OCT	NOV	DEC	2020	2021		CHANGE
1. HOMICIDE	Actual Cleared	0	1	1	0	1	1	0	0	0	0	0	0	4	4	0	0.0%
		0	1	1	0	0	0	0	0	0	0	0	0	4	2	-2	-50.0%
2. RAPE	Actual Cleared	6	5	12	6	9	12	5	10	4	4	4	4	71	69	-2	-2.8%
		3	0	3	1	0	1	0	1	1	1	1	1	10	10	0	0.0%
3. ROBBERY	Actual Cleared	4	9	13	21	18	11	18	12	16	16	16	16	122	122	0	0.0%
		2	0	6	10	9	2	11	4	4	4	4	4	40	48	8	20.0%
4. AGGR. ASSAULT	Actual Cleared	38	31	49	44	42	47	47	64	60	60	60	60	323	422	99	30.7%
		18	12	24	19	17	26	24	34	26	26	26	26	143	200	57	39.9%
5. BURGLARY	Actual Cleared	34	37	28	28	36	36	31	32	29	29	29	29	288	291	3	1.0%
		3	1	5	3	5	1	4	5	5	5	5	5	24	32	8	33.3%
6. LARCENY THEFT	Actual Cleared	232	228	254	202	219	195	182	211	213	213	213	213	2211	1936	-275	-12.4%
		11	8	17	10	13	12	8	17	15	15	15	15	157	111	-46	-29.3%
7. AUTO THEFT	Actual Cleared	24	32	27	38	38	25	41	32	41	41	41	41	322	298	-24	-7.5%
		0	3	1	3	4	3	2	2	4	4	4	4	24	22	-2	-8.3%
TOTAL INDEX CRIMES	Actual Cleared	338	343	384	339	363	327	324	361	363	363	363	363	3341	3142	-199	-6.0%
		37	25	57	46	48	45	49	63	55	55	55	55	402	425	23	5.7%
TOTAL PERSON CRIMES	Actual Cleared	48	46	75	71	70	71	70	86	80	80	80	80	520	617	97	18.7%
		23	13	34	30	26	29	35	39	31	31	31	31	197	260	63	32.0%
TOTAL PROPERTY CRIMES	Actual Cleared	290	297	309	268	293	256	254	275	283	283	283	283	2821	2525	-296	-10.5%
		14	12	23	16	22	16	14	24	24	24	24	24	205	165	-40	-19.5%
ARSON	Actual	2	1	3	4	3	4	3	3	3	3	3	3	16	26	10	62.5%
Y-T-D Loss \$114,727	Cleared	2	0	2	1	2	4	1	1	1	1	1	1	8	15	7	87.5%

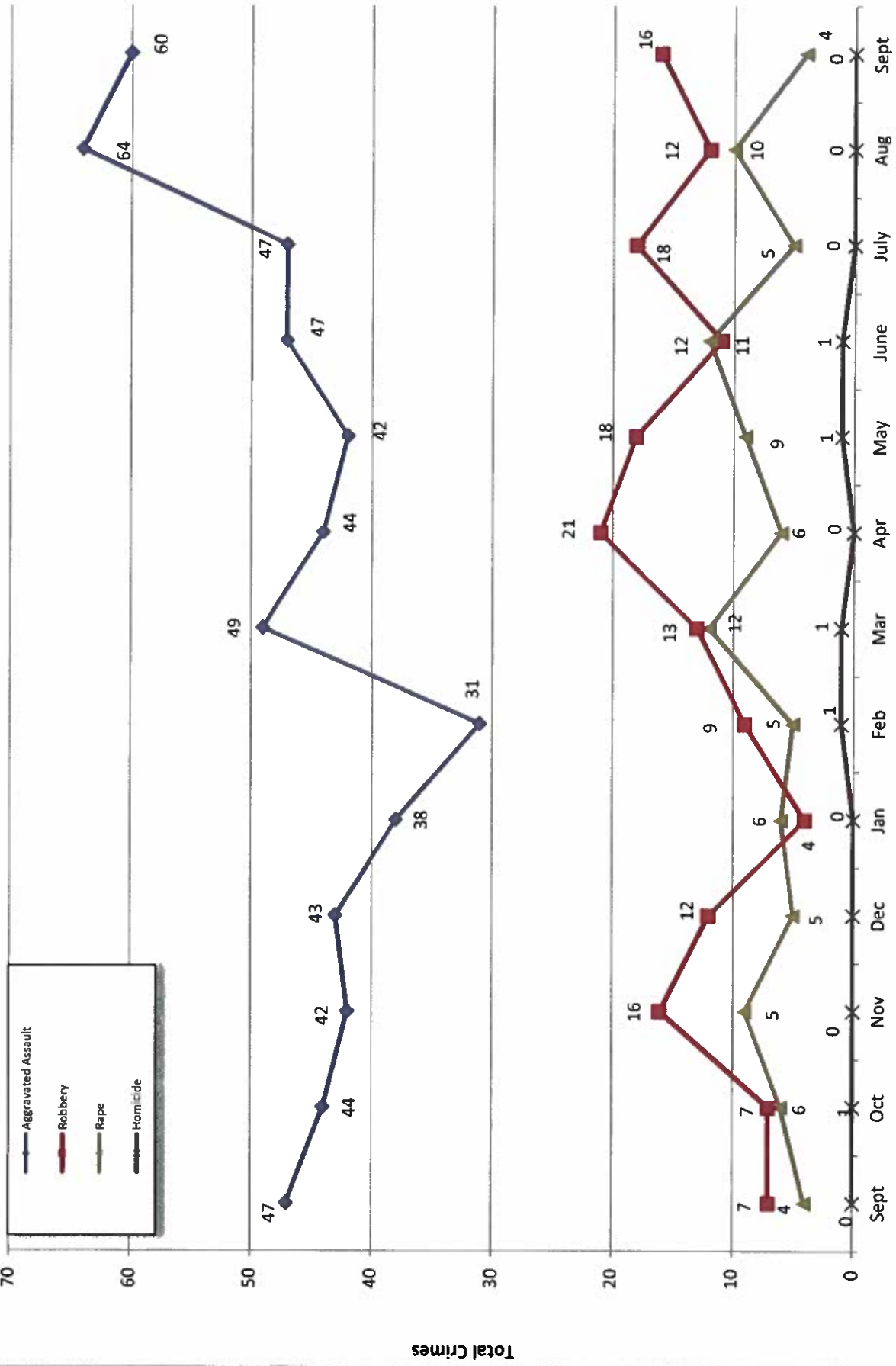
Part 1 Crimes by Month (Property Crimes) 2021



- 2020 -

- 2021 -

Part 1 Crimes by Month (Violent Crimes) 2021

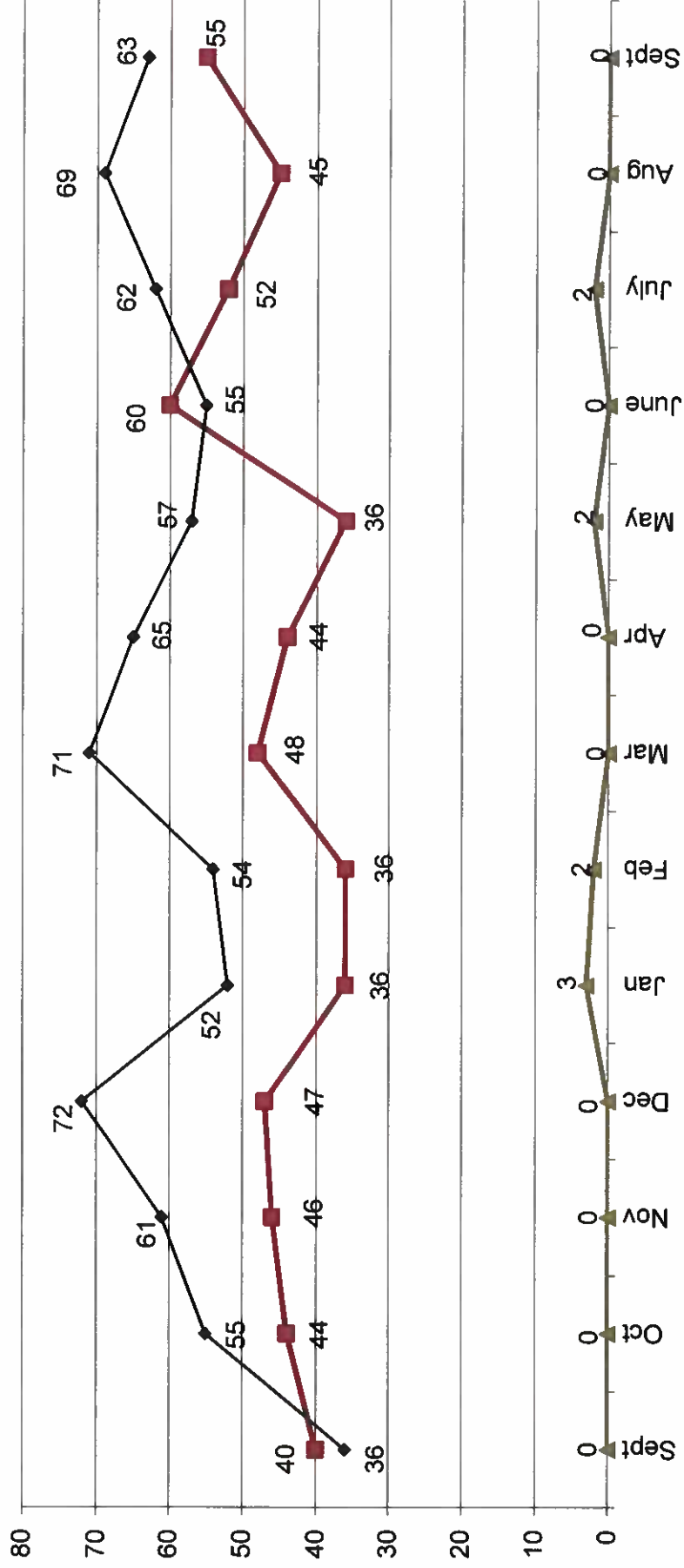
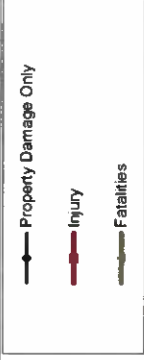


- 2021 -

Month

- 2020 -

Traffic Collisions 2020 - 2021





UCR Crimes by GeoArea

Required Parameters
 Reporting Period: Sep 2021
 Agency: OCEANSIDE

Optional Parameters
 Geographical Area: All Beats
 Group by: Agency Select by: Neighborhood

Prior Report Number: S1STA120

Neighborhood	MURDER	RAPE (HISTORICAL)	RAPE (HISTORICAL)	ROBBERY--	ST/ ARM	ASSAULT	VIOLENT	BURGLARY----	LARCENY-THEFT--	TOTAL	\$400+	TOTAL	THEFT	PROPERTY	CRIME	CAR	
Agency = OCEANSIDE																	
AIRPORT	0	1	1	0	0	1	2	0	0	2	0	2	1	3	5	2	
EASTSIDE/CAP/ISTRANO	0	0	0	0	2	6	8	1	1	2	10	2	2	16	24	8	
FIRE MOUNTAIN	0	0	0	0	1	4	5	2	3	5	12	22	34	40	45	13	
GUALJOME	0	1	1	0	0	6	7	1	0	1	4	3	7	9	16	4	
IVY RAN/RAN DEL ORO	0	0	0	2	1	6	9	2	1	3	15	12	27	40	49	12	
LAKE	0	0	0	1	1	7	9	0	0	0	7	6	13	15	24	4	
MIRA COSTA	0	0	0	0	0	4	4	2	0	2	2	7	9	12	16	6	
MISSN MESALOMA ALTA	0	0	0	1	1	2	4	1	0	1	6	8	14	20	24	5	
MORRO HILLS	0	0	0	0	0	3	3	0	0	0	2	0	2	2	5	2	
NORTH VALLEY	0	0	0	0	0	2	2	0	0	0	5	6	11	14	16	5	
OCEAN HILLS	0	0	0	0	0	1	1	0	0	0	1	2	3	5	6	0	
OCEANA	0	0	0	0	0	0	0	0	0	0	1	2	3	5	5	-1	
SAN LUIS REY	0	0	1	2	2	5	9	6	0	6	8	8	16	24	33	9	
SOUTH OCEANSIDE	0	0	0	-1	0	2	1	1	2	3	6	2	8	12	13	2	
TOWNSITE	0	0	0	2	1	11	14	5	1	6	18	24	42	54	68	13	
TRI CITY	0	1	1	0	0	0	1	0	0	0	6	2	8	10	11	6	
UNKNOWN	0	1	1	0	0	0	1	0	0	0	1	1	2	2	3	1	
SUB-TOTAL	0	4	5	7	9	60	80	21	8	29	106	107	213	283	363	91	
GRAND TOTALS	0	4	5	7	9	60	80	21	8	29	106	107	213	283	363	91	



UCR Crimes by GeoArea

Required Parameters
 Reporting Period: Jan 2021 to Sep 2021
 Agency: OCEANSIDE

Optional Parameters
 Geographical Area: All Beats
 Group by: Agency Select by: Neighborhood

Prior Report Number: S1STA120

Neighborhood	MURDER	RAPE	RAPE (HISTORICAL)	ROBBERY--	RAPE	ARMED	ST/ ARM	ASSAULT	VIOLENT	BURGLARY----	\$400+	LARCENY-THEFT--	TOTAL	THEFT	PROPERTY	CRIME	CAR	
Agency = OCEANSIDE																		
AIRPORT	0	4	2	0	1	7	12	1	5	6	19	21	40	7	53	65	16	
EASTSIDE/CAPISTRANO	2	3	0	3	6	27	41	13	9	22	43	36	79	16	117	158	47	
FIRE MOUNTAIN	0	3	3	3	6	27	39	5	23	28	79	141	220	12	260	299	75	
GUAJOME	0	5	5	2	2	20	29	12	3	15	53	56	109	8	132	161	50	
IVY RAN/RAN DEL ORO	1	5	3	3	4	36	49	19	19	38	110	108	218	31	287	336	141	
LAKE	0	0	0	6	11	23	40	4	9	13	41	63	104	12	129	169	25	
MIRA COSTA	0	3	3	0	0	18	21	7	8	15	38	59	97	22	134	155	64	
MISSN MESALOMA ALTA	0	3	0	6	13	39	61	13	6	19	57	94	151	30	200	261	78	
MORRO HILLS	0	0	0	0	0	5	5	2	0	2	12	4	16	4	22	27	11	
NORTH VALLEY	0	3	4	3	0	18	24	6	0	6	32	36	68	18	92	116	34	
OCEAN HILLS	0	0	0	0	0	7	7	3	0	3	25	23	48	13	64	71	31	
OCEANA	0	0	0	1	2	6	9	3	1	4	7	11	18	6	28	37	5	
SAN LUIS REY	0	17	12	3	5	47	72	29	11	40	69	104	173	21	234	306	74	
SOUTH OCEANSIDE	0	4	2	0	5	19	28	13	10	23	58	61	119	20	162	190	63	
TOWNSITE	1	15	13	10	19	105	150	22	25	47	187	196	383	66	496	646	168	
TRI CITY	0	3	2	4	4	19	30	6	5	11	41	49	90	12	113	143	42	
UNKNOWN	0	1	1	0	0	-1	0	0	-1	-1	2	1	3	0	2	2	2	
SUB-TOTAL	4	69	50	44	78	422	617	158	133	291	873	1,063	1,936	298	2,525	3,142	926	
GRAND TOTALS	4	69	50	44	78	422	617	158	133	291	873	1,063	1,936	298	2,525	3,142	926	