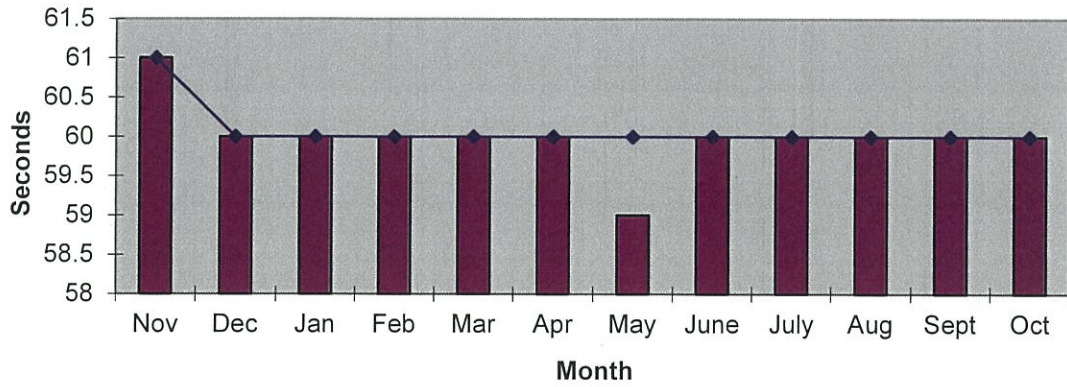
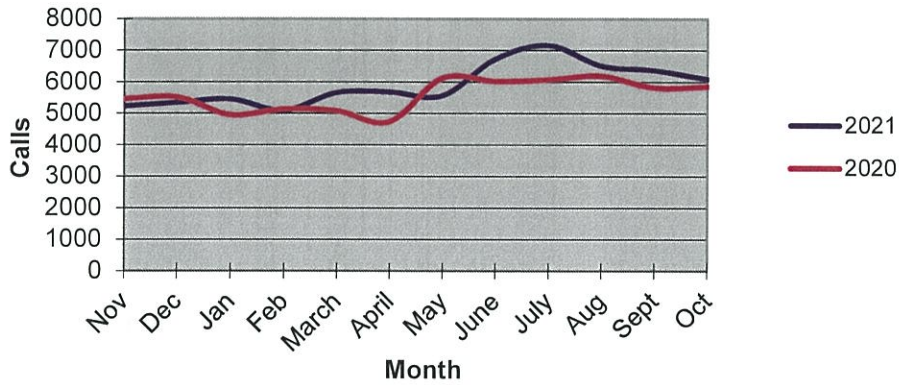


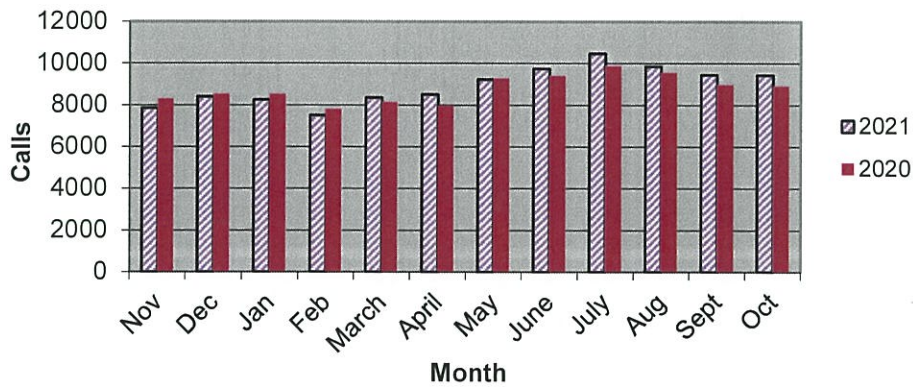
**Priority 1 Dispatch Times- Police**



**911 Calls**



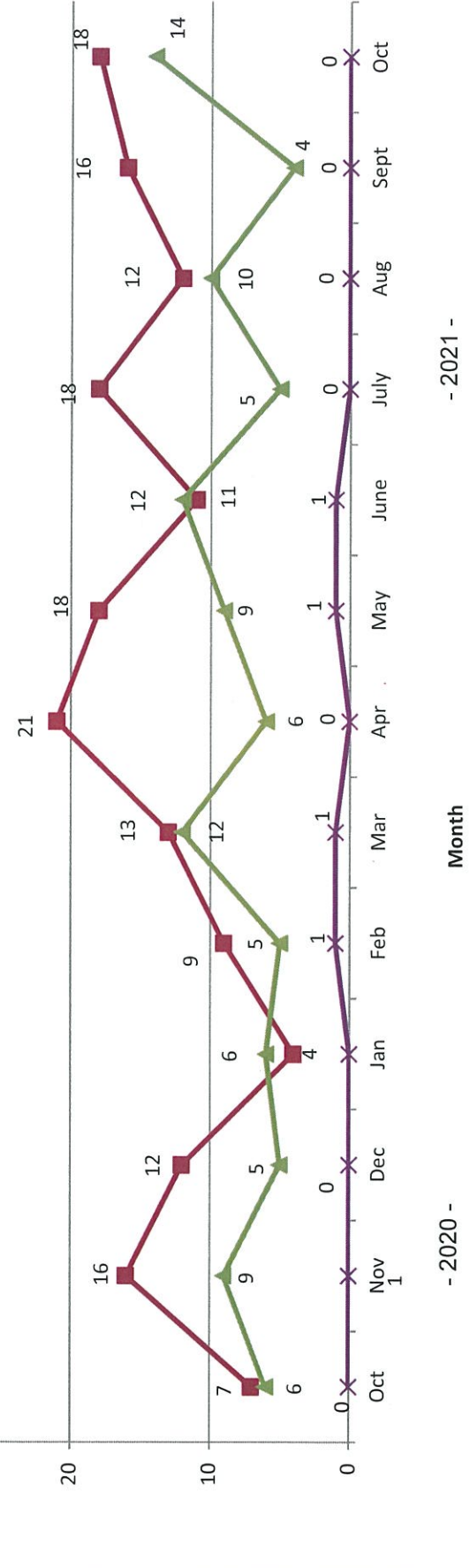
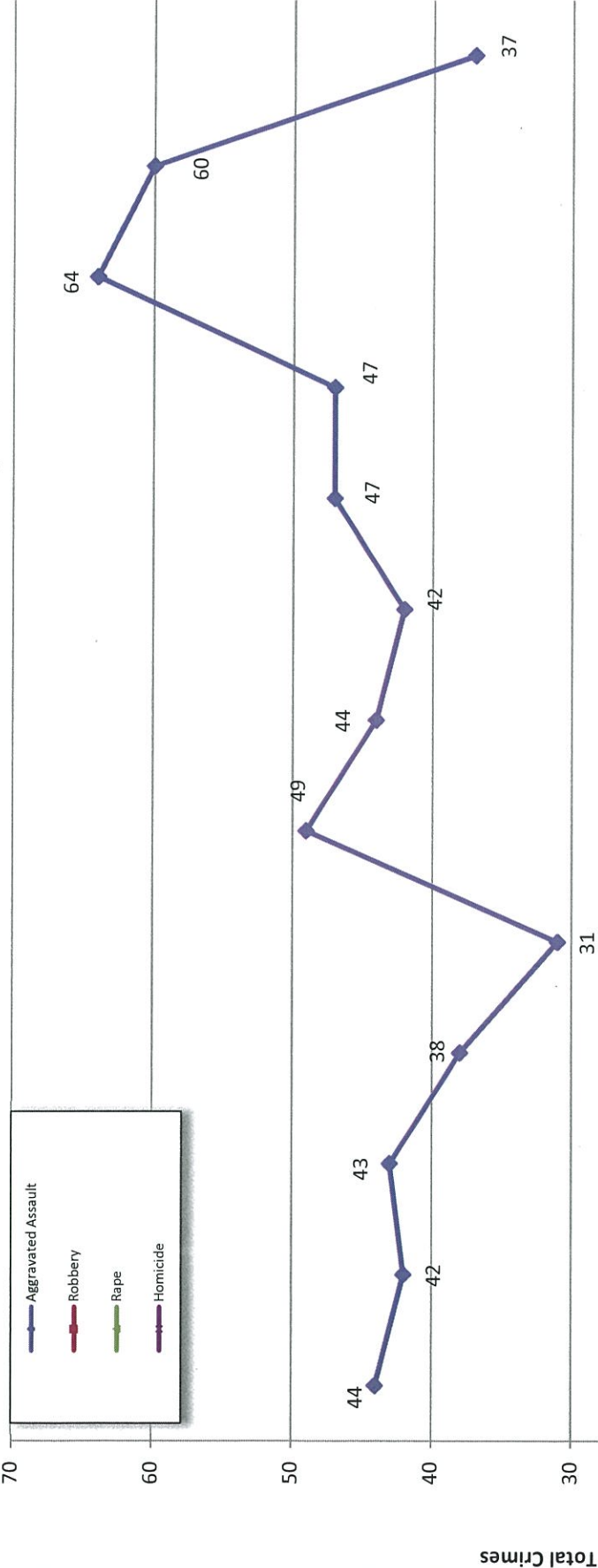
**Calls for Service**



**OCEANSIDE POLICE DEPARTMENT  
FBI INDEX CRIMES**

	MONTHLY CASE ACTIVITY 2021												YEAR TO DATE COMPARISON		% CHANGE	
	JAN	FEB	MAR	APR	MAY	JUN	JUL	AUG	SEP	OCT	NOV	DEC	2020	2021		CHANGE
1. HOMICIDE	0	1	1	0	1	1	0	0	0	0	0	0	5	4	-1	
	Cleared												5	2	-3	
2. RAPE	6	5	12	6	9	12	5	10	4	14			59	83	24	
	Cleared												4	10	6	
3. ROBBERY	4	9	13	21	18	11	18	12	16	18			111	140	29	
	Cleared												42	53	11	
4. AGGR. ASSAULT	38	31	49	44	42	47	47	64	60	37			416	459	43	
	Cleared												190	217	27	
5. BURGLARY	34	37	28	28	36	36	31	32	29	43			371	334	-37	
	Cleared												51	42	-9	
6. LARCENY THEFT	232	228	254	202	219	195	182	211	213	212			1936	2148	212	
	Cleared												134	117	-17	
7. AUTO THEFT	24	32	27	38	38	25	41	32	41	55			340	353	13	
	Cleared												26	26	0	
TOTAL INDEX CRIMES	338	343	384	339	363	327	324	361	363	379			3238	3521	283	
	Cleared												452	467	15	
TOTAL PERSON CRIMES	48	46	75	71	70	71	70	86	80	69			591	686	95	
	Cleared												241	282	41	
TOTAL PROPERTY CRIMES	290	297	309	268	293	256	254	275	283	310			2647	2835	188	
	Cleared												211	185	-26	
ARSON	2	1	3	4	3	4	3	3	3	2			42	28	-14	
Y-T-D Loss \$115,377	2	0	2	1	2	4	1	1	2	1			21	16	-5	

# Part 1 Crimes by Month (Violent Crimes) 2021

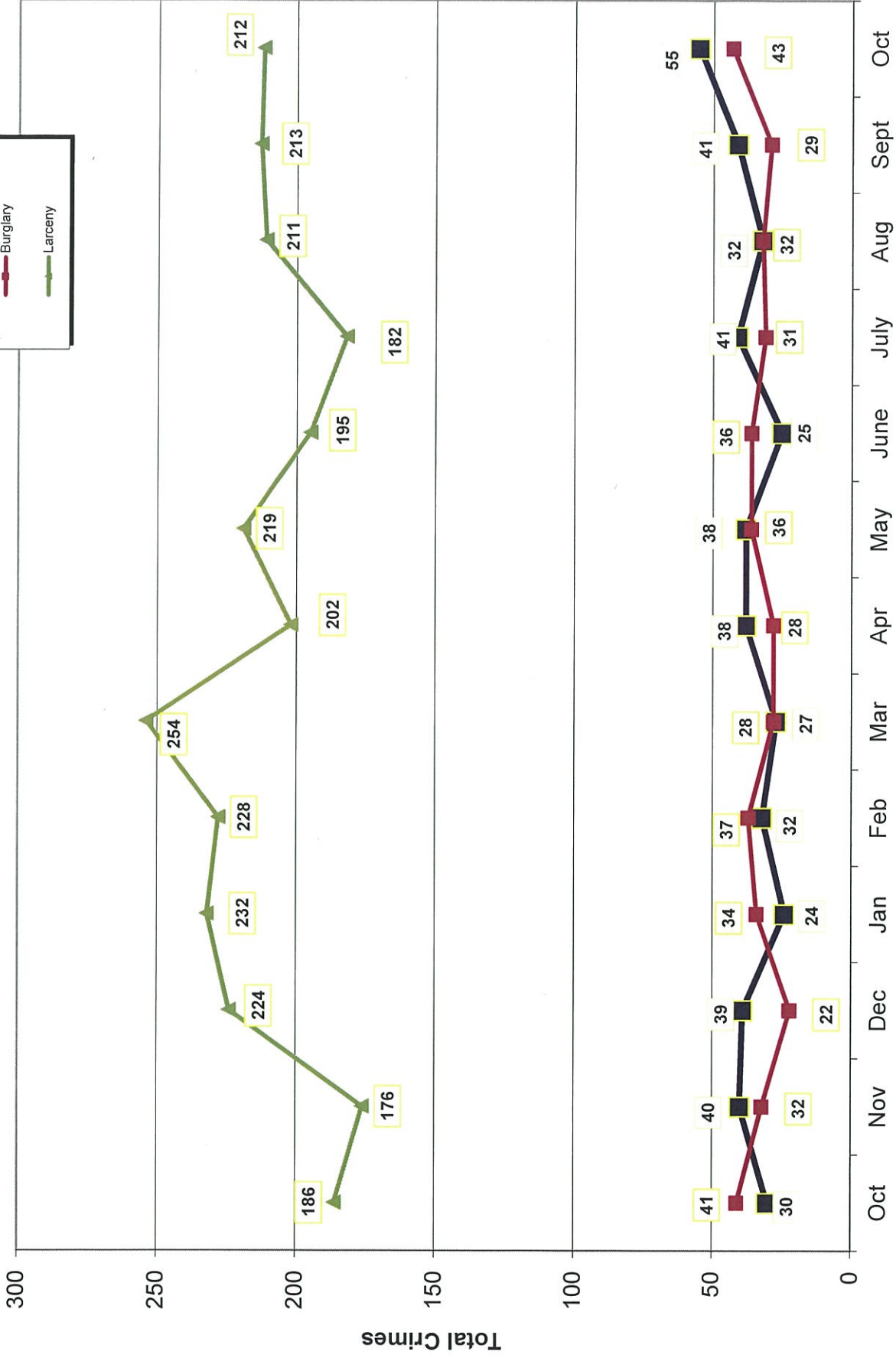


- 2021 -

Month

- 2020 -

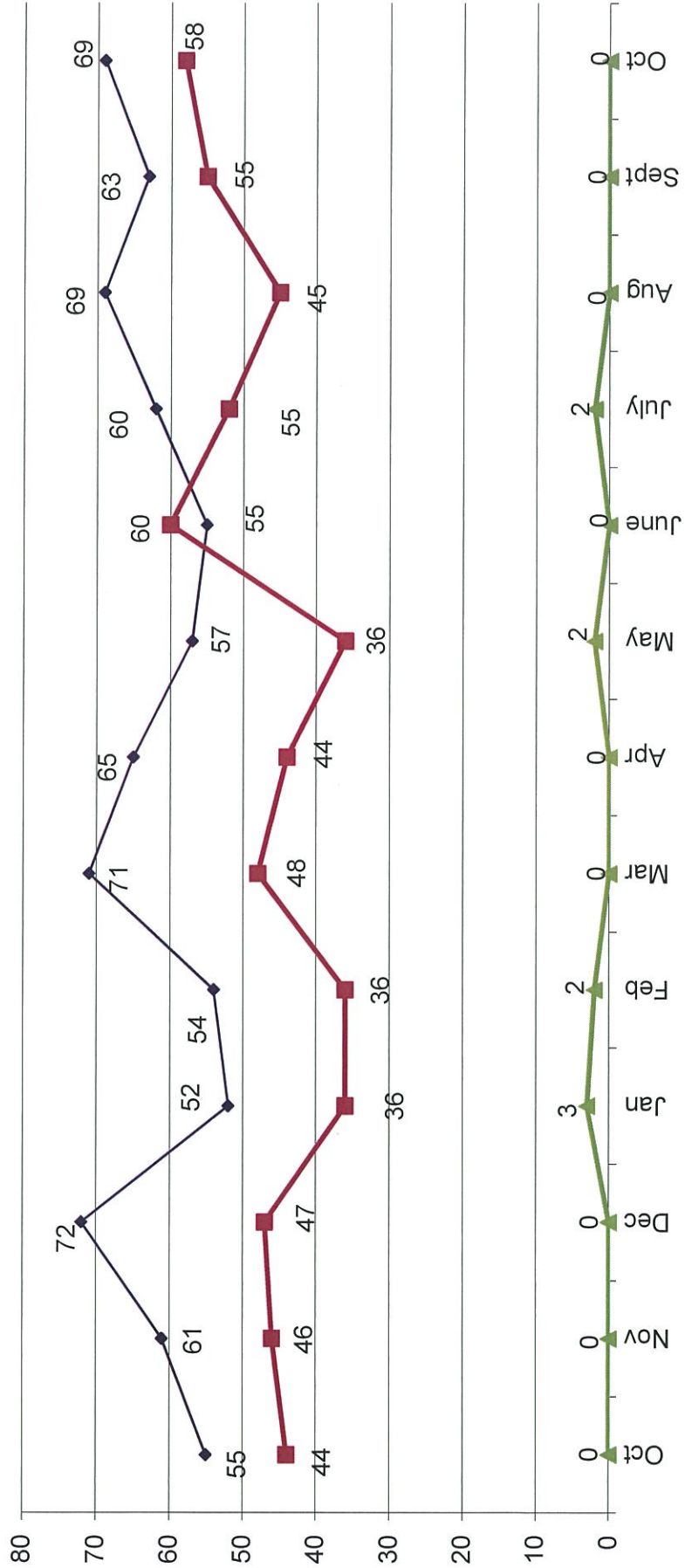
# Part 1 Crimes by Month (Property Crimes) 2021



- 2020 -

- 2021 -

### Traffic Collisions 2020 - 2021



-2020-

-2021-



# UCR Crimes by GeoArea

**Required Parameters**  
 Reporting Period: Oct 2021  
 Agency: OCEANSIDE

**Optional Parameters**  
 Geographical Area: All Beats  
 Group by: Agency Select by: Neighborhood

Prior Report Number: S1STA120

Neighborhood	MURDER	RAPE	RAPE (HISTORICAL)	ROBBERY--	AGGRVD	VIOLENT	BURGLARY----	TOTAL	\$400+	<\$400	TOTAL	THEFT	CRM TL	IDX TL	CRIME	CAR
				ARMED	ASSAULT	CRM TL	NRESID	TOTAL	TOTAL				CRM TL			
				ST/ ARM												
<b>Agency = OCEANSIDE</b>																
AIRPORT	0	1	0	0	0	3	4	1	1	2	2	3	6	10	1	
EASTSIDE/CAPISTRANO	0	1	1	2	0	1	4	0	0	4	6	3	9	13	4	
FIRE MOUNTAIN	0	1	1	2	0	2	5	6	6	14	29	3	38	43	14	
GUAJOME	0	0	0	1	0	2	3	1	1	5	10	0	11	14	2	
IVY RAN/RAN DEL ORO	0	1	0	2	0	2	5	2	2	17	30	8	40	45	18	
LAKE	0	0	0	1	1	1	3	0	0	12	18	2	20	23	10	
MIRA COSTA	0	0	0	1	0	1	2	0	1	4	9	3	13	15	6	
MISSN MESALOMA ALTA	0	1	0	0	1	3	5	2	7	12	24	7	38	43	12	
MORRO HILLS	0	0	0	0	0	0	0	2	0	1	1	0	3	3	0	
NORTH VALLEY	0	3	2	0	0	4	7	1	1	4	7	3	11	18	1	
OCEAN HILLS	0	0	0	0	0	1	1	0	0	1	4	0	4	5	3	
OCEANA	0	0	0	0	0	1	1	0	0	1	4	0	4	5	3	
SAN LUIS REY	0	2	2	3	1	3	9	3	4	11	19	7	33	42	11	
SOUTH OCEANSIDE	0	0	0	0	0	3	3	7	4	10	15	4	30	33	6	
TOWNSITE	0	3	3	0	3	7	13	1	2	16	26	8	37	50	10	
TRI CITY	0	1	1	0	0	2	3	0	1	4	6	4	11	14	2	
UNKNOWN	0	0	0	0	0	1	1	0	0	1	2	0	2	3	0	
<b>SUB-TOTAL</b>	<b>0</b>	<b>14</b>	<b>10</b>	<b>12</b>	<b>6</b>	<b>37</b>	<b>69</b>	<b>17</b>	<b>26</b>	<b>113</b>	<b>212</b>	<b>55</b>	<b>310</b>	<b>379</b>	<b>103</b>	
<b>GRAND TOTALS</b>	<b>0</b>	<b>14</b>	<b>10</b>	<b>12</b>	<b>6</b>	<b>37</b>	<b>69</b>	<b>17</b>	<b>26</b>	<b>113</b>	<b>212</b>	<b>55</b>	<b>310</b>	<b>379</b>	<b>103</b>	



# UCR Crimes by GeoArea

**Required Parameters**  
 Reporting Period: Jan 2021 to Oct 2021  
 Agency: OCEANSIDE

**Optional Parameters**  
 Geographical Area: All Beats  
 Group by: Agency **Select by: Neighborhood**

Prior Report Number: S1STA120

Neighborhood	MURDER	RAPE	RAPE (HISTORICAL)	ROBBERY--	AGGRVD	VIOLENT	RESID	NRESID	TOTAL	\$400+	<\$400	TOTAL	THEFT	CRM TL	IDX TL	PROWL
				ARMED	ST/ ARM	ASSAULT	CRM TL	RESID	NRESID	TOTAL						
<b>Agency = OCEANSIDE</b>																
AIRPORT	0	5	2	0	1	10	16	1	6	7	19	23	42	10	59	75
EASTSIDE/CAPISTRANO	2	4	1	5	6	28	45	13	9	22	45	40	85	19	126	171
FIRE MOUNTAIN	0	4	4	5	6	29	44	5	29	34	94	155	249	15	298	342
GUAJOME	0	5	5	3	2	22	32	13	3	16	58	61	119	8	143	175
IVY RAN/RAN DEL ORO	1	6	3	5	4	38	54	19	21	40	127	121	248	39	327	381
LAKE	0	0	0	7	12	24	43	4	9	13	47	75	122	14	149	192
MIRA COSTA	0	3	3	1	0	19	23	7	9	16	43	63	106	25	147	170
MISSN MESA/LOMA ALTA	0	4	0	6	14	42	66	15	11	26	69	106	175	37	238	304
MORRO HILLS	0	0	0	0	0	5	5	4	0	4	12	5	17	4	25	30
NORTH VALLEY	0	6	6	3	0	22	31	7	0	7	36	39	75	21	103	134
OCEAN HILLS	0	0	0	0	0	8	8	3	0	3	26	26	52	13	68	76
OCEANA	0	0	0	1	2	7	10	3	1	4	8	14	22	6	32	42
SAN LUIS REY	0	19	14	6	6	50	81	32	15	47	80	112	192	28	267	348
SOUTH OCEANSIDE	0	4	2	0	5	22	31	20	14	34	63	71	134	24	192	223
TOWNSITE	1	18	16	10	22	112	163	23	27	50	197	212	409	74	533	696
TRI CITY	0	4	3	4	4	21	33	6	6	12	45	51	96	16	124	157
UNKNOWN	0	1	1	0	0	0	1	0	-1	-1	3	2	5	0	4	5
<b>SUB-TOTAL</b>	<b>4</b>	<b>83</b>	<b>60</b>	<b>56</b>	<b>84</b>	<b>459</b>	<b>686</b>	<b>175</b>	<b>159</b>	<b>334</b>	<b>972</b>	<b>1,176</b>	<b>2,148</b>	<b>353</b>	<b>2,835</b>	<b>3,521</b>
<b>GRAND TOTALS</b>	<b>4</b>	<b>83</b>	<b>60</b>	<b>56</b>	<b>84</b>	<b>459</b>	<b>686</b>	<b>175</b>	<b>159</b>	<b>334</b>	<b>972</b>	<b>1,176</b>	<b>2,148</b>	<b>353</b>	<b>2,835</b>	<b>3,521</b>