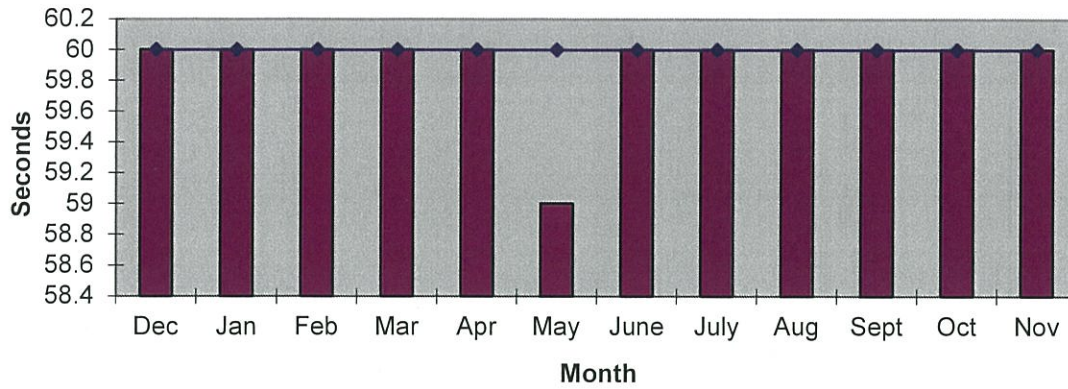
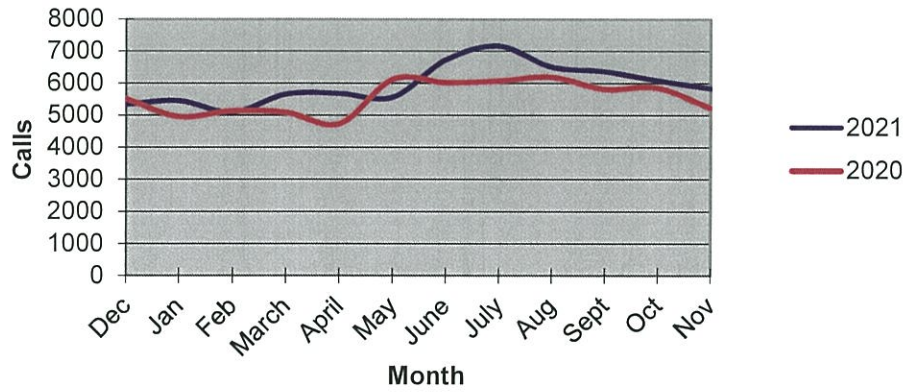


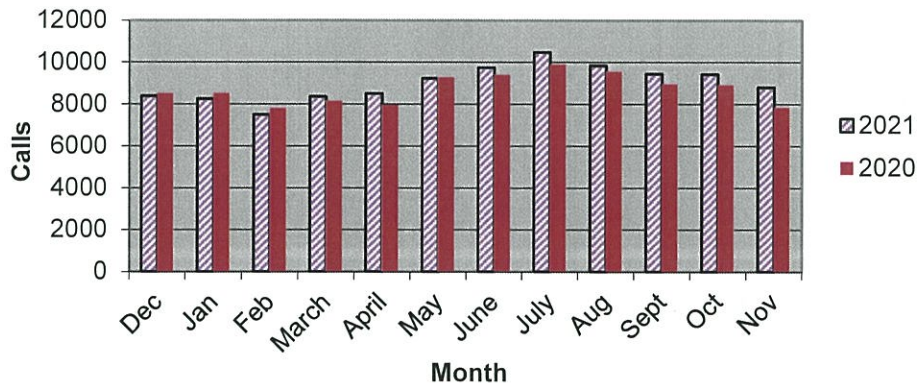
Priority 1 Dispatch Times- Police



911 Calls



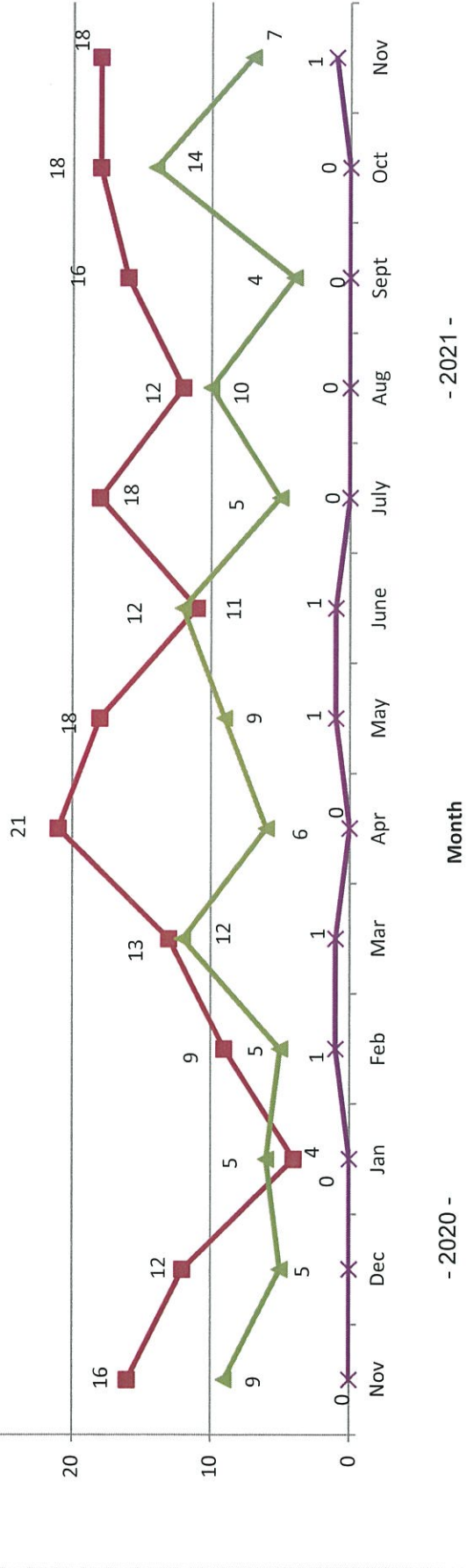
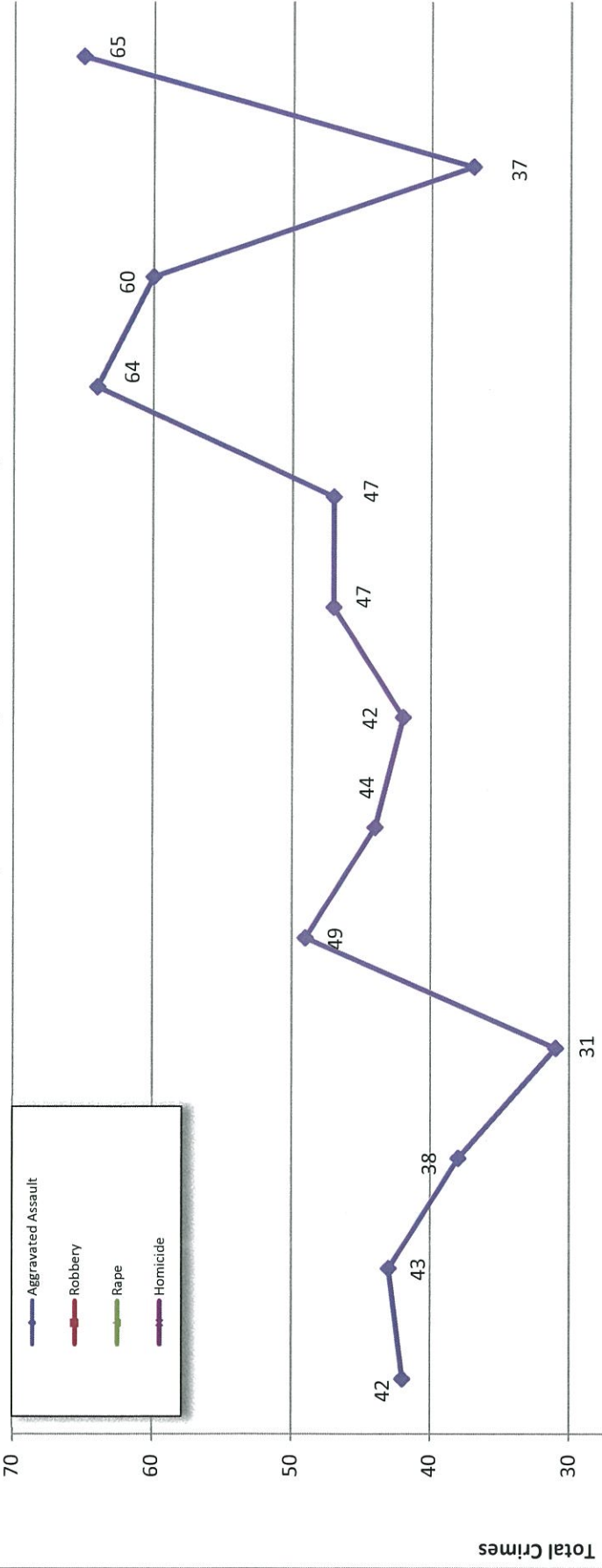
Calls for Service



**OCEANSIDE POLICE DEPARTMENT
FBI INDEX CRIMES**

		MONTHLY CASE ACTIVITY 2021												YEAR TO DATE COMPARISON			% CHANGE	
		JAN	FEB	MAR	APR	MAY	JUN	JUL	AUG	SEP	OCT	NOV	DEC	2020	2021	CHANGE		
1. HOMICIDE	Actual	0	1	1	0	1	1	0	0	0	0	0	1	1	5	5	0	0.0%
	Cleared	0	1	1	0	0	0	0	0	0	0	0	1	1	5	3	-2	-40.0%
2. RAPE	Actual	6	5	12	6	9	12	5	10	4	14	7	7	68	90	22	32.4%	
	Cleared	3	0	3	1	0	1	0	1	1	0	0	0	4	10	6	150.0%	
3. ROBBERY	Actual	4	9	13	21	18	11	18	12	16	18	18	18	127	158	31	24.4%	
	Cleared	2	0	6	10	9	2	11	4	4	5	5	5	42	58	16	38.1%	
4. AGGR. ASSAULT	Actual	38	31	49	44	42	47	47	64	60	37	65	65	458	524	66	14.4%	
	Cleared	18	12	24	19	17	26	24	34	26	17	32	32	202	249	47	23.3%	
5. BURGLARY	Actual	34	37	28	28	36	36	31	32	29	43	34	34	403	368	-35	-8.7%	
	Cleared	3	1	5	3	5	1	4	5	5	10	8	8	54	50	-4	-7.4%	
6. LARCENY THEFT	Actual	232	228	254	202	219	195	182	211	213	212	200	200	2112	2348	236	11.2%	
	Cleared	11	8	17	10	13	12	8	17	15	6	11	11	149	128	-21	-14.1%	
7. AUTO THEFT	Actual	24	32	27	38	38	25	41	32	41	55	40	40	380	393	13	3.4%	
	Cleared	0	3	1	3	4	3	2	2	4	4	7	7	29	33	4	13.8%	
TOTAL INDEX CRIMES	Actual	338	343	384	339	363	327	324	361	363	379	365	365	3553	3886	333	9.4%	
Cleared	37	25	57	46	48	45	49	63	55	42	64	64	485	531	46	9.5%		
TOTAL PERSON CRIMES	Actual	48	46	75	71	70	71	70	86	80	69	91	91	658	777	119	18.1%	
Cleared	23	13	34	30	26	29	35	39	31	31	22	38	253	320	67	26.5%		
TOTAL PROPERTY CRIMES	Actual	290	297	309	268	293	256	254	275	283	310	274	274	2895	3109	214	7.4%	
Cleared	14	12	23	16	22	16	14	14	24	24	20	26	232	211	-21	-9.1%		
ARSON	Actual	2	1	3	4	3	4	3	3	3	2	5	5	47	33	-14	-29.8%	
Y-T-D Loss \$115,431	Cleared	2	0	2	1	2	4	1	1	2	1	1	1	23	17	-6	-26.1%	

Part 1 Crimes by Month (Violent Crimes) 2021

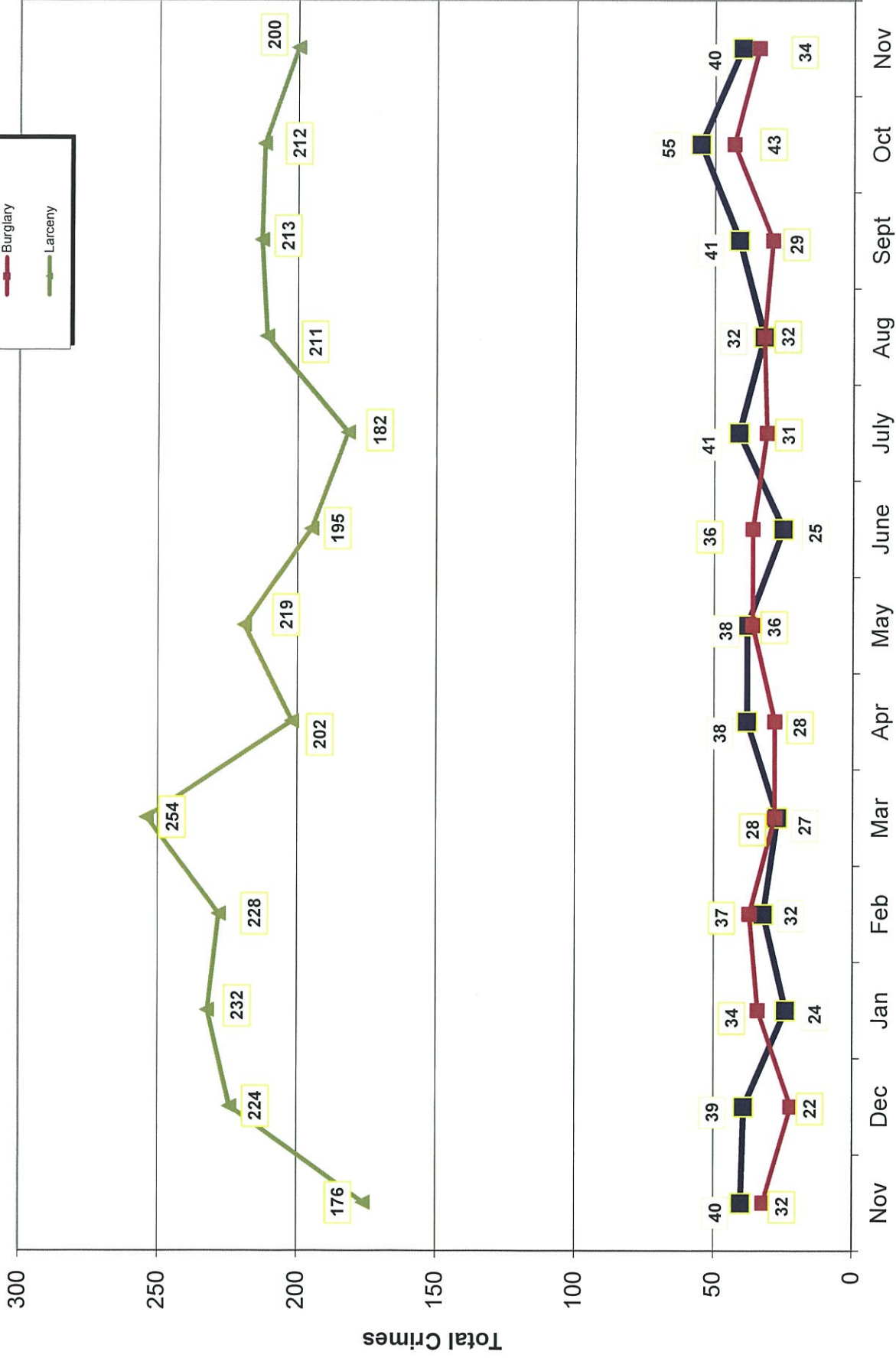
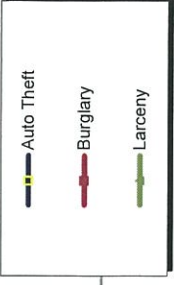


- 2021 -

Month

- 2020 -

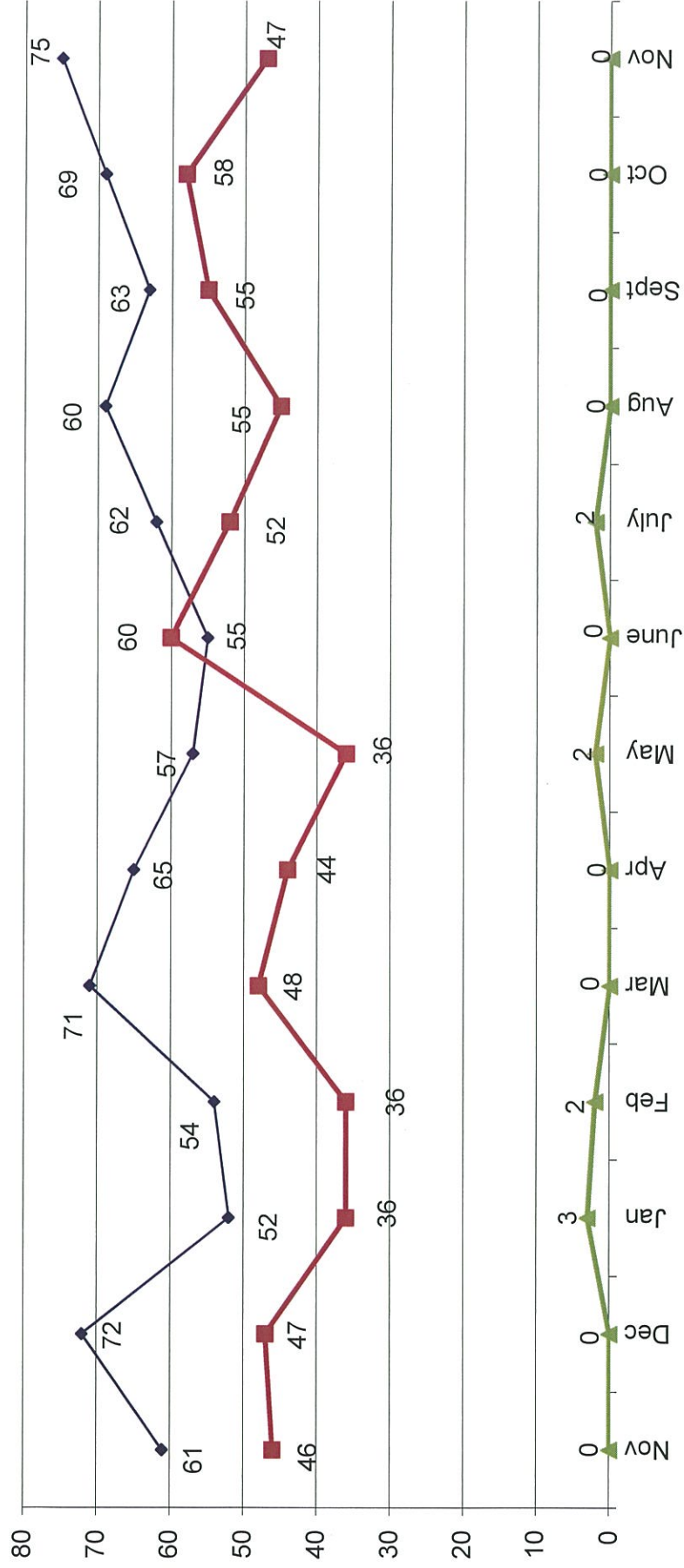
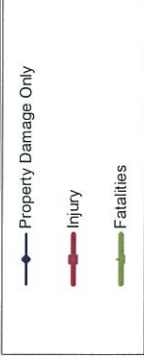
Part 1 Crimes by Month (Property Crimes) 2021



- 2020 -

- 2021 -

Traffic Collisions 2020 - 2021



-2020-

-2021-



UCR Crimes by GeoArea

Required Parameters
 Reporting Period: Nov 2021
 Agency: OCEANSIDE

Optional Parameters
 Geographical Area: All Beats
 Group by: Agency **Select by: Neighborhood**

Prior Report Number: S1STA120

Neighborhood	MURDER	RAPE (HISTORICAL)	RAPE (HISTORICAL)	ROBBERY--	ARMED	ST/ ARM	ASSAULT	VIOLENT	AGGRVD	RESID	NRESID	TOTAL	\$400+	<\$400	TOTAL	THEFT	CRM TL	IDX TL	CRIME	CAR	PROWL	
Agency = OCEANSIDE																						
AIRPORT	0	0	0	0	1	0	5	6	0	0	0	0	1	2	3	0	3	9	9	2	5	
EASTSIDE/CAPISTRANO	0	2	0	0	0	0	3	5	0	0	0	0	4	6	10	2	12	17	5	5	9	
FIRE MOUNTAIN	0	0	0	1	0	0	2	3	1	1	2	2	12	14	26	5	33	36	9	3	9	
GUAJOME	0	0	0	1	0	0	3	4	2	1	3	4	4	2	6	0	9	13	3	3	3	
IVY RAN/RAN DEL ORO	0	1	1	1	0	0	3	5	5	0	5	12	14	14	26	6	37	42	18	18	18	
LAKE	0	0	0	0	1	1	1	2	0	2	2	2	3	7	10	1	13	15	1	1	1	
MIRA COSTA	0	0	0	0	0	0	2	2	0	2	2	8	11	19	19	6	27	29	13	13	13	
MISSN MESALOMA.ALTA	0	1	1	1	2	5	9	9	2	0	2	5	9	14	14	6	22	31	8	8	8	
MORRO HILLS	0	0	0	0	0	0	2	2	0	1	1	3	2	5	5	0	6	8	4	4	4	
NORTH VALLEY	1	1	1	0	0	8	10	10	2	0	2	3	3	3	6	1	9	19	3	3	3	
OCEAN HILLS	0	0	0	0	1	0	0	1	0	0	0	0	3	1	4	0	4	5	2	2	2	
OCEANA	0	0	0	0	1	1	1	2	0	0	0	0	1	2	3	1	4	6	2	2	2	
SAN LUIS REY	0	2	2	1	2	12	17	17	2	2	4	6	13	19	19	5	28	45	14	14	14	
SOUTH OCEANSIDE	0	0	0	0	1	0	0	1	0	3	3	6	8	8	14	1	18	19	6	6	6	
TOWNSITE	0	0	0	1	3	13	17	17	3	3	6	16	15	15	31	6	43	60	11	11	11	
TRI CITY	0	0	0	0	0	4	4	4	1	1	2	5	0	0	5	0	7	11	2	2	2	
UNKNOWN	0	0	0	0	0	1	1	1	0	0	0	0	0	-1	-1	0	-1	0	0	0	0	
SUB-TOTAL	1	7	7	7	11	65	91	91	18	16	34	92	108	200	200	40	274	365	103	103	103	
GRAND TOTALS	1	7	7	7	11	65	91	91	18	16	34	92	108	200	200	40	274	365	103	103	103	



UCR Crimes by GeoArea

Required Parameters
Reporting Period: Jan 2021 to Nov 2021
Agency: OCEANSIDE

Optional Parameters
Geographical Area: All Beats
Group by: Agency Select by: Neighborhood

Prior Report Number: S1STA120

Neighborhood	MURDER	RAPE	RAPE (HISTORICAL)	ROBBERY--	ARMED	ST/ ARM	ASSAULT	VIOLENT	AGGRVD	BURGLARY----	TOTAL	\$400+	<\$400	TOTAL	THEFT	CRM TL	IDX TL	CRIME	CAR
Agency = OCEANSIDE																			
AIRPORT	0	5	2	1	1	1	15	22	1	6	7	20	25	45	10	62	84	19	
EASTSIDE/CAPISTRANO	2	6	3	5	6	6	31	50	13	9	22	49	46	95	21	138	188	56	
FIRE MOUNTAIN	0	4	4	6	6	6	31	47	6	30	36	106	169	275	20	331	378	98	
GUAJOME	0	5	5	4	2	2	25	36	15	4	19	62	63	125	8	152	188	55	
IVY RAN/RAN DEL ORO	1	7	4	6	4	4	41	59	24	21	45	139	135	274	45	364	423	177	
LAKE	0	0	0	7	13	13	25	45	4	11	15	50	82	132	15	162	207	36	
MIRA COSTA	0	3	3	1	0	0	21	25	7	11	18	51	74	125	31	174	199	83	
MISSN MESAILOMA ALTA	0	5	1	7	16	16	47	75	17	11	28	74	115	189	43	260	335	98	
MORRO HILLS	0	0	0	0	0	0	7	7	4	1	5	15	7	22	4	31	38	15	
NORTH VALLEY	1	7	7	3	0	0	30	41	9	0	9	39	42	81	22	112	153	38	
OCEAN HILLS	0	0	0	0	1	1	8	9	3	0	3	29	27	56	13	72	81	36	
OCEANA	0	0	0	1	3	3	8	12	3	1	4	9	16	25	7	36	48	10	
SAN LUIS REY	0	21	16	7	8	8	62	98	34	17	51	86	125	211	33	295	393	99	
SOUTH OCEANSIDE	0	4	2	0	6	6	22	32	20	17	37	69	79	148	25	210	242	75	
TOWNSITE	1	18	16	11	25	25	125	180	26	30	56	213	227	440	80	576	756	189	
TRI CITY	0	4	3	4	4	4	25	37	7	7	14	50	51	101	16	131	168	46	
UNKNOWN	0	1	1	0	0	0	1	2	0	-1	-1	3	1	4	0	3	5	2	
SUB-TOTAL	5	90	67	63	95	95	524	777	193	175	368	1,064	1,284	2,348	393	3,109	3,886	1,132	
GRAND TOTALS	5	90	67	63	95	95	524	777	193	175	368	1,064	1,284	2,348	393	3,109	3,886	1,132	