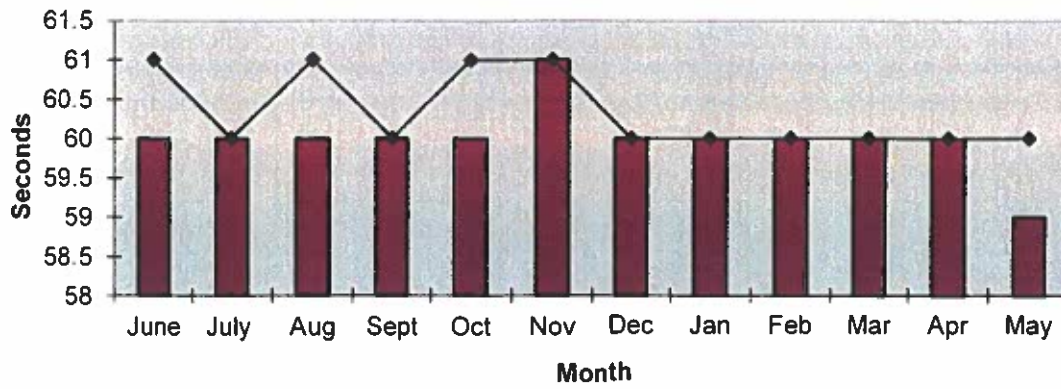
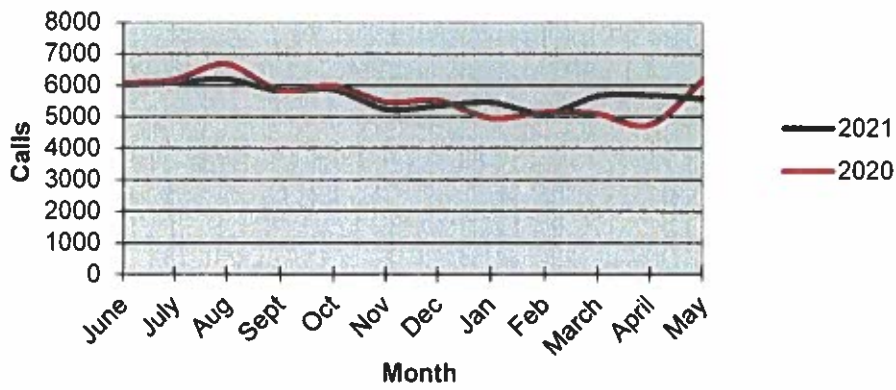


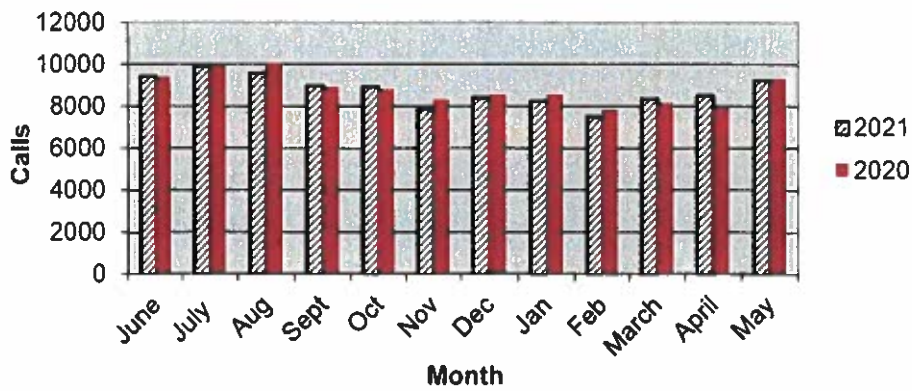
Priority 1 Dispatch Times- Police



911 Calls



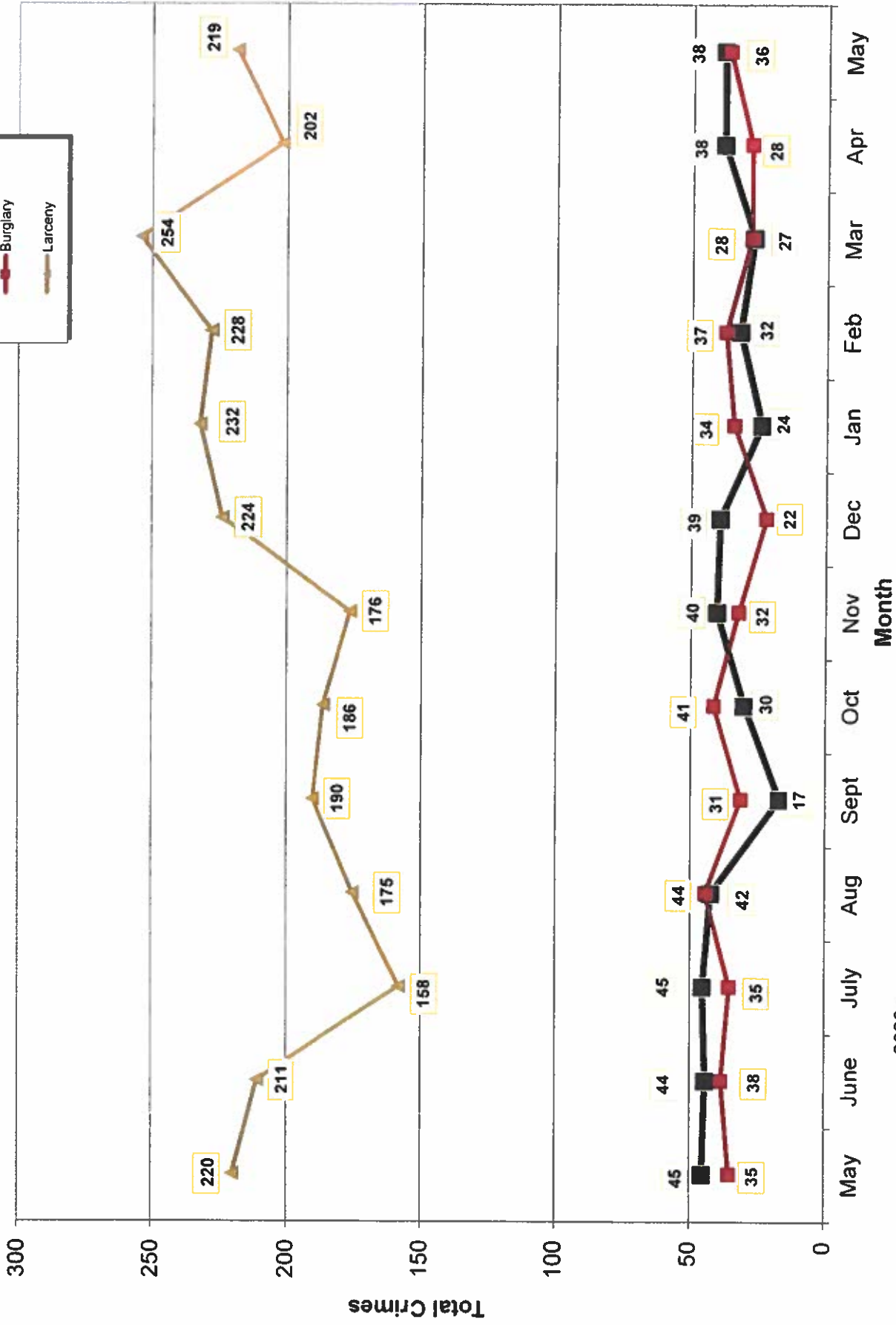
Calls for Service



**OCEANSIDE POLICE DEPARTMENT
FBI INDEX CRIMES**

	MONTHLY CASE ACTIVITY 2021												YEAR TO DATE		% CHANGE	
													COMPARISON			
	JAN	FEB	MAR	APR	MAY	JUN	JUL	AUG	SEP	OCT	NOV	DEC	2020	2021 CHANGE		
1. HOMICIDE	0	1	1	0	1								4	3	-1	-25.0%
	0	1	1	0	0								4	2	-2	-50.0%
2. RAPE	6	5	12	6	9								26	38	12	46.2%
	3	0	3	1	0								0	7	7	700.0%
3. ROBBERY	4	9	13	21	18								52	65	13	25.0%
	2	0	6	10	9								19	27	8	42.1%
4. AGGR. ASSAULT	38	31	49	44	42								196	204	8	4.1%
	18	12	24	19	17								88	90	2	2.3%
5. BURGLARY	34	37	28	28	36								182	163	-19	-10.4%
	3	1	5	3	5								26	17	-9	-34.6%
6. LARCENY THEFT	232	228	254	202	219								1016	1135	119	11.7%
	11	8	17	10	13								73	59	-14	-19.2%
7. AUTO THEFT	24	32	27	38	38								146	159	13	8.9%
	0	3	1	3	4								10	11	1	10.0%
TOTAL INDEX CRIMES	338	343	384	339	363								1622	1767	145	8.9%
	37	25	41	46	48								220	197	-23	-10.5%
TOTAL PERSON CRIMES	48	46	75	71	70								278	310	32	11.5%
	23	13	34	30	26								111	126	15	13.5%
TOTAL PROPERTY CRIMES	290	297	309	268	293								1344	1457	113	8.4%
	14	12	23	16	22								109	87	-22	-20.2%
ARSON	2	1	3	4	3								20	13	-7	-35.0%
Y-T-D Loss \$5,660.00	2	0	2	1	2								9	7	-2	-22.2%

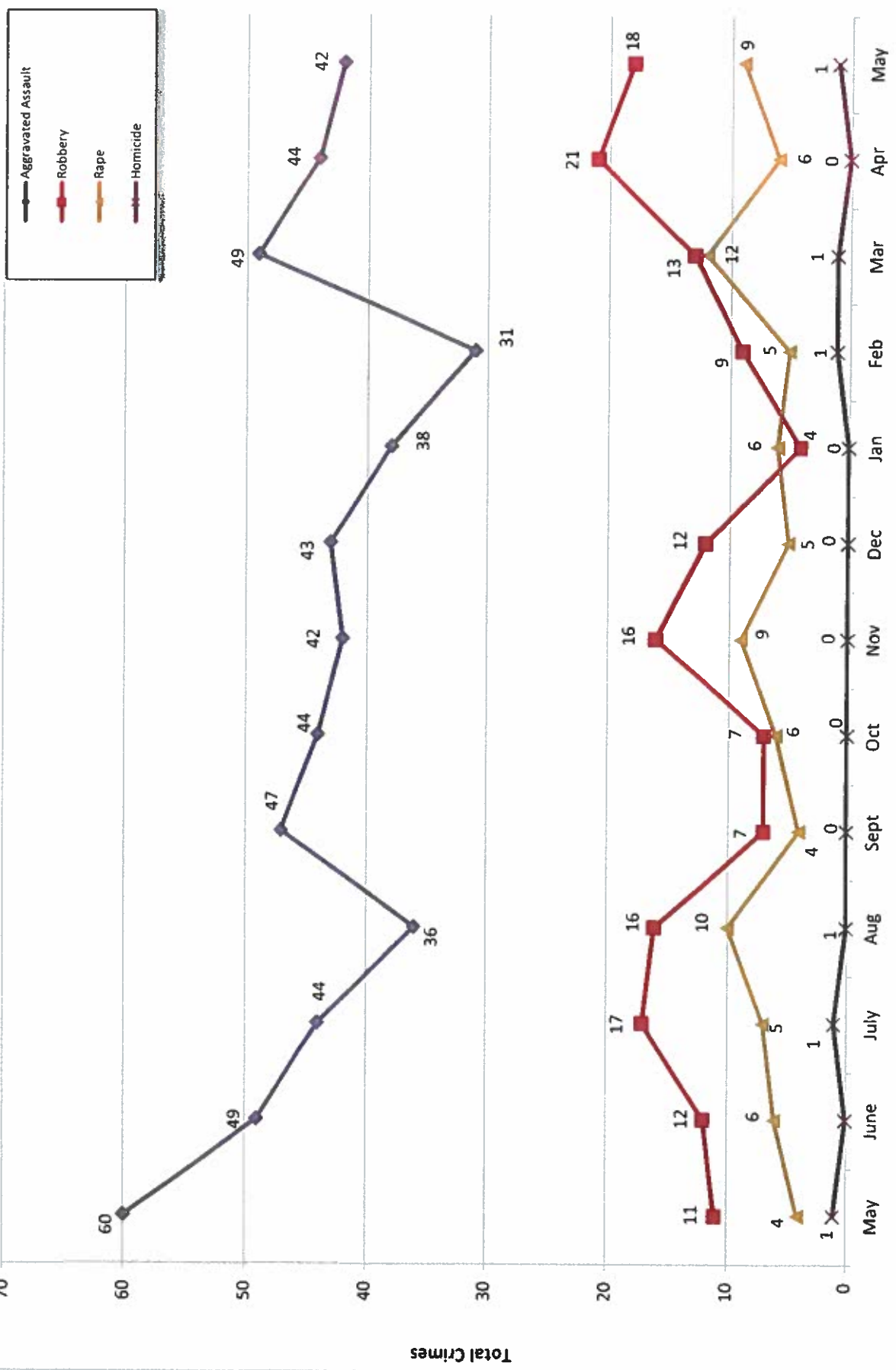
Part 1 Crimes by Month (Property Crimes) 2021



- 2020 -

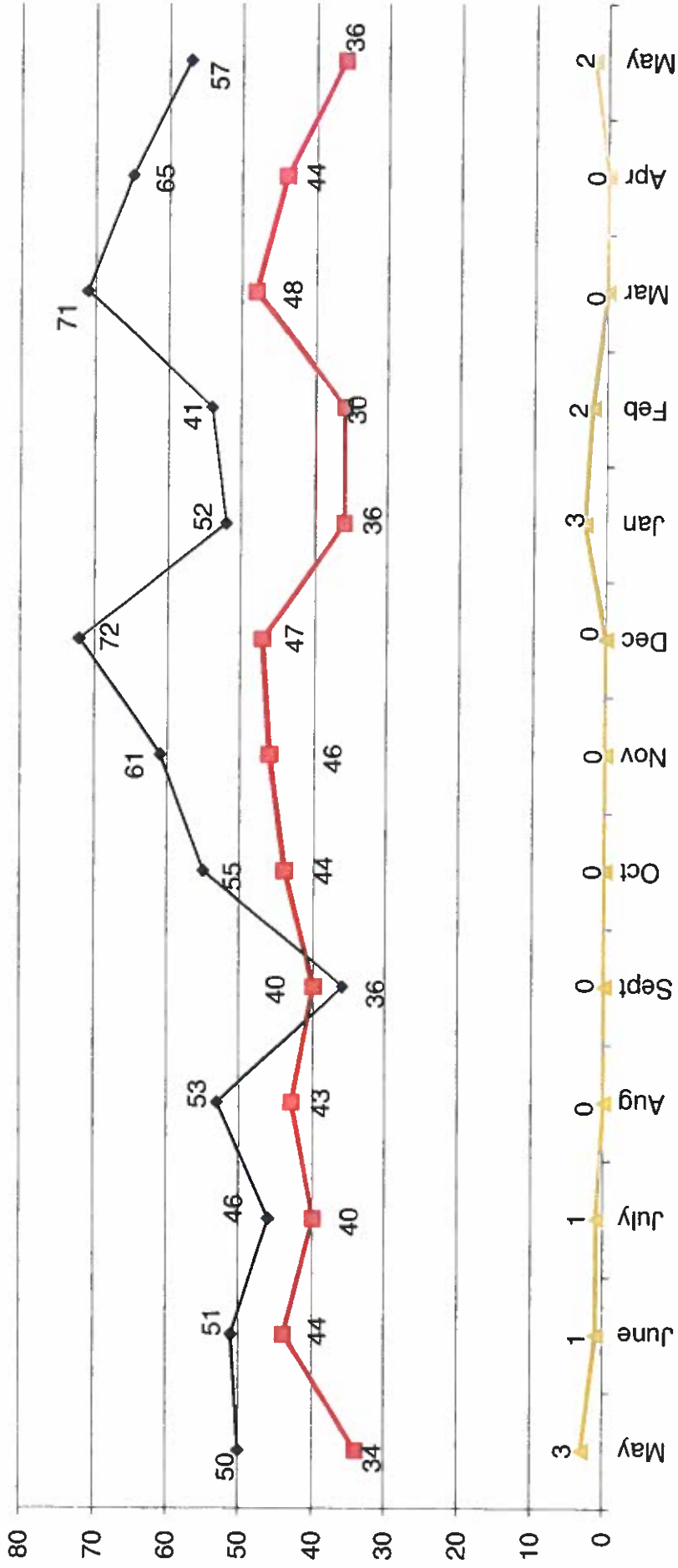
- 2021 -

Part 1 Crimes by Month (Violent Crimes) 2021



- 2020 - Month - 2021 -

Traffic Collisions 2020 - 2021



-2020-

-2021-



UCR Crimes by GeoArea

Required Parameters
 Reporting Period: Jan 2021 to May 2021
 Agency: OCEANSIDE

Optional Parameters
 Geographical Area: All Beats
 Group by: Agency Select by: Neighborhood

Prior Report Number: S1STA120

Neighborhood	MURDER	RAPE	RAPE (HISTORICAL)	ROBBERY--	ARMED	ST/ ARM	ASSAULT	VIOLENT	BURGLARY	LARCENY THEFT	M VEH	PROPERTY	CRIME	CAR				
								RESID	NRESID	TOTAL	\$400+	<\$400	TOTAL	THEFT	CRM TL	IDX TL	PROWL	
Agency = OCEANSIDE																		
AIKPORT	0	2	1	0	0	0	5	7	4	5	16	15	31	4	40	47	13	
EASTSIDE/CAPISTRANO	1	2	0	2	4	4	12	8	7	15	22	28	50	10	75	96	30	
FIRE MOUNTAIN	0	2	2	1	3	3	11	3	13	16	44	63	107	7	130	147	40	
GUALAJOME	0	4	4	2	2	2	5	4	1	5	34	34	68	4	77	90	32	
IVY RAN/RAN DEL ORO	1	0	4	1	1	1	20	9	12	21	64	63	127	12	160	184	90	
LAKE	0	0	0	4	9	4	12	4	3	7	22	44	66	5	78	103	14	
MIRCA COSTA	0	0	0	0	0	0	5	6	3	8	19	28	47	14	69	75	32	
MISN MESA/LOMA ALTA	0	1	0	4	7	7	15	11	5	16	38	56	94	14	124	151	50	
MORRO HILLS	0	0	0	0	0	0	1	1	0	1	10	3	13	3	17	18	8	
NORTH VALLEY	0	2	3	1	0	0	10	13	5	5	19	24	43	9	57	70	24	
OCEAN HILLS	0	0	0	0	0	0	5	3	0	3	16	18	34	13	48	53	26	
OCEANA	0	0	0	0	1	1	4	5	3	3	6	7	13	3	19	24	5	
SAN LUIS REY	0	5	5	1	7	7	27	38	14	19	39	59	98	12	129	167	37	
SOUTH OCEANSIDE	0	1	0	1	4	4	9	15	6	10	30	46	76	9	95	110	44	
TOWNSHIP	1	7	6	3	9	9	52	72	10	24	99	107	206	39	269	341	94	
TRI CITY	0	2	1	3	1	1	11	17	2	5	24	38	62	4	71	88	28	
UNKNOWN	0	0	0	0	0	0	-1	1	0	0	0	0	0	-1	1	-2	0	
SUB-TOTAL	3	38	28	23	42	42	204	310	87	163	502	633	1,135	199	1,457	1,767	567	
GRAND TOTALS	3	38	28	23	42	42	204	310	87	163	502	633	1,135	199	1,457	1,767	567	



UCR Crimes by GeoArea

Required Parameters
 Reporting Period: May 2021
 Agency: OCEANSIDE

Optional Parameters
 Geographical Area: All Beats
 Group by: Agency Select by: Neighborhood

Prior Report Number: S1STA120

Neighborhood	MURDER	RAPE	RAPE (HISTORICAL)	ROBBERY--	AGGRVD	VIOLENT	BURGLARY	NRESID	TOTAL	\$400+	<\$400	TOTAL	THEFT	CRM TL	PROPERTY	CRIME	CAR
Agency = OCEANSIDE																	
AIRPORT	0	1	0	0	0	0	1	0	2	3	3	6	0	8	9	3	
EASTSIDE/CAMPS/RAND	0	0	0	0	3	4	5	1	15	3	7	10	5	21	25	6	
FIRE MOUNTAIN	0	0	0	0	4	4	2	2	4	9	16	25	-1	28	32	7	
GUAJOME	0	3	3	0	0	3	1	1	2	6	8	14	0	16	19	8	
IVY RAN/RAN DEL ORO	0	0	0	0	6	6	0	5	5	6	7	13	3	21	27	7	
LAKE	0	0	0	0	1	4	0	1	1	4	12	16	2	19	23	6	
MIKA COSTA	0	0	0	0	2	2	0	0	0	3	5	8	3	11	13	6	
MIS-SN MESALOMA ALTA	0	0	0	1	3	5	2	1	3	6	13	19	4	27	32	5	
MORRO HILLS	0	0	0	0	0	0	1	0	1	2	2	4	1	6	6	2	
NORTH VALLEY	0	0	0	0	1	1	0	0	0	5	5	10	3	13	14	6	
OCEAN HILLS	0	0	0	0	1	1	0	0	0	0	0	0	2	2	3	0	
OCEANA	0	0	0	0	2	2	0	0	1	1	1	2	1	3	5	0	
SAN LUIS KEY	0	3	3	1	3	7	6	2	8	7	11	15	2	25	32	5	
SOUTH OCEANSIDE	0	1	0	0	1	5	2	0	2	8	5	13	2	17	22	8	
TOWNSITE	1	1	1	2	13	16	0	2	2	27	24	51	9	62	81	22	
TRE CITY	0	0	0	2	5	7	0	0	0	8	5	13	1	14	21	6	
UNKNOWN	0	0	0	0	-1	-1	0	0	0	0	0	0	0	0	-1	0	
SUB-TOTAL	1	9	7	7	42	70	19	17	38	98	121	219	38	293	363	97	
GRAND TOTALS	1	9	7	7	42	70	19	17	38	98	121	219	38	293	363	97	