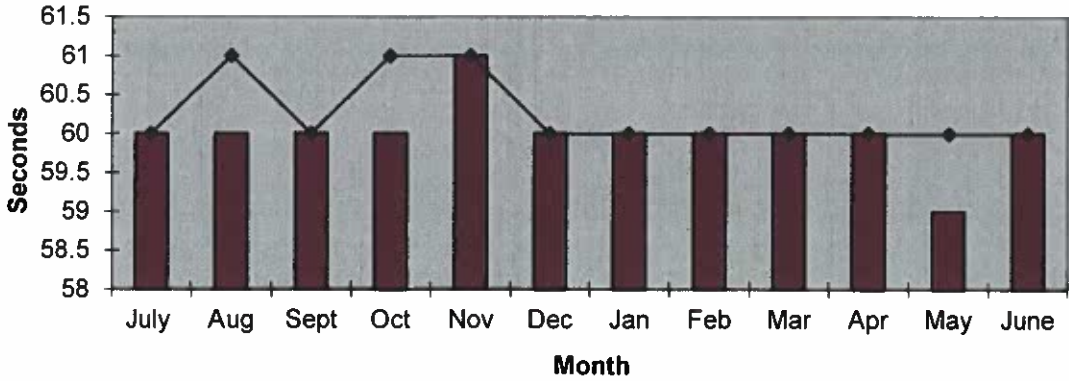
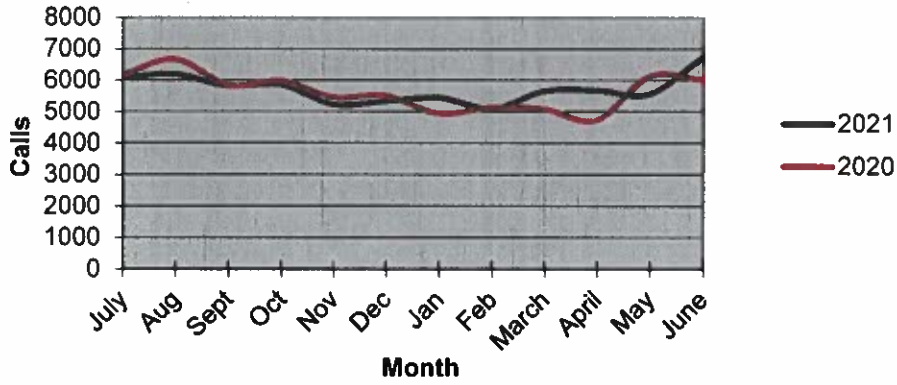


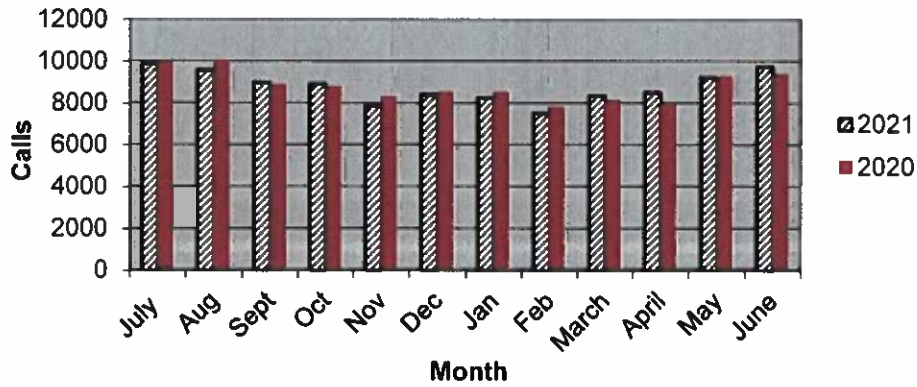
Priority 1 Dispatch Times- Police



911 Calls



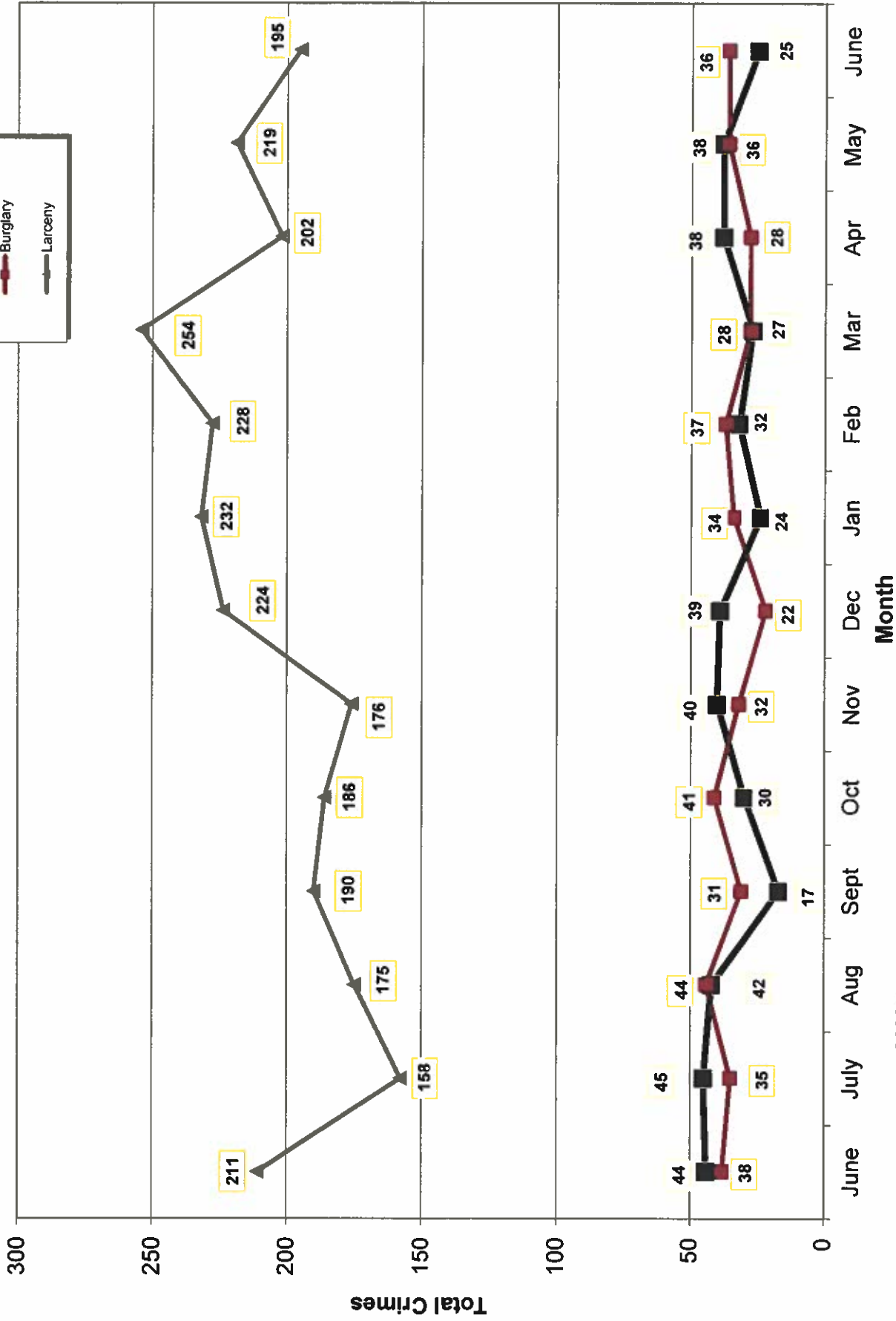
Calls for Service



**OCEANSIDE POLICE DEPARTMENT
FBI INDEX CRIMES**

	MONTHLY CASE ACTIVITY 2021													YEAR TO DATE COMPARISON		% CHANGE		
														2020	2021		CHANGE	
	JAN	FEB	MAR	APR	MAY	JUN	JUL	AUG	SEP	OCT	NOV	DEC						
1. HOMICIDE	Actual	0	1	1	0	1	1	1							4	4	0	0.0%
	Cleared	0	1	1	0	0	0								4	2	-2	-50.0%
2. RAPE	Actual	6	5	12	6	9	12								32	50	18	56.3%
	Cleared	3	0	3	1	0	1								0	8	8	800.0%
3. ROBBERY	Actual	4	9	13	21	18	11								64	76	12	18.8%
	Cleared	2	0	6	10	9	2								23	29	6	26.1%
4. AGGR. ASSAULT	Actual	38	31	49	44	42	47								245	251	6	2.4%
	Cleared	18	12	24	19	17	26								116	116	0	0.0%
5. BURGLARY	Actual	34	37	28	28	36	36								220	199	-21	-9.5%
	Cleared	3	1	5	3	5	1								32	18	-14	-43.8%
6. LARCENY THEFT	Actual	232	228	254	202	219	195								1227	1330	103	8.4%
	Cleared	11	8	17	10	13	12								88	71	-17	-19.3%
7. AUTO THEFT	Actual	24	32	27	38	38	25								190	184	-6	-3.2%
	Cleared	0	3	1	3	4	3								10	14	4	40.0%
TOTAL INDEX CRIMES	Actual	338	343	384	339	363	327								1982	2094	112	5.7%
	Cleared	37	25	41	46	48	45								273	242	-31	-11.4%
TOTAL PERSON CRIMES	Actual	48	46	75	71	70	71								345	381	36	10.4%
	Cleared	23	13	34	30	26	29								143	155	12	8.4%
TOTAL PROPERTY CRIMES	Actual	290	297	309	268	293	256								1637	1713	76	4.6%
	Cleared	14	12	23	16	22	16								130	103	-27	-20.8%
ARSON	Actual	2	1	3	4	3	4								24	17	-7	-29.2%
Y-T-D Loss \$105,445	Cleared	2	0	2	1	2	4								10	11	1	10.0%

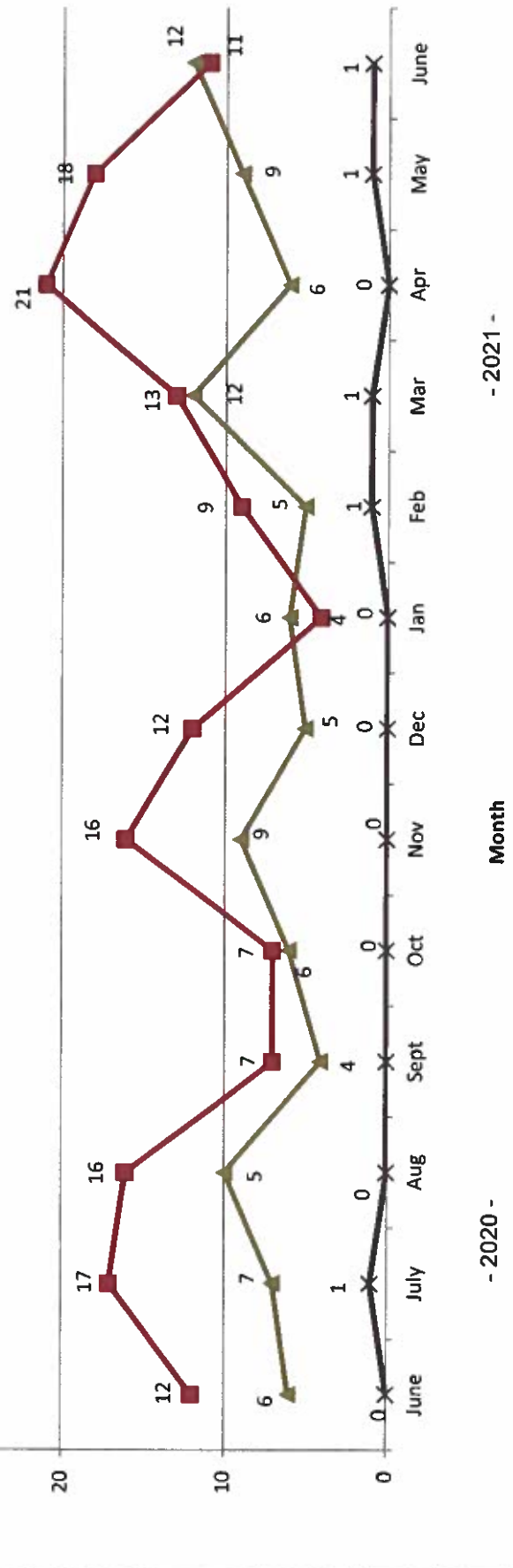
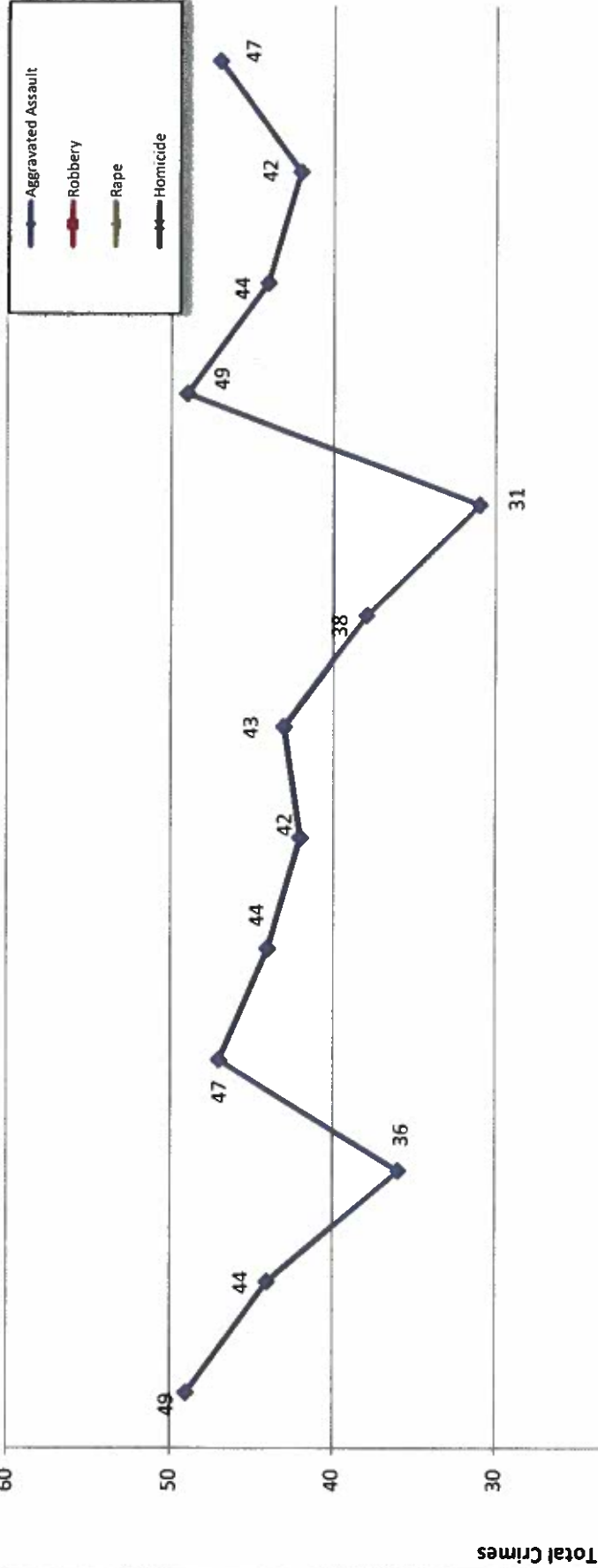
Part 1 Crimes by Month (Property Crimes) 2021



- 2020 -

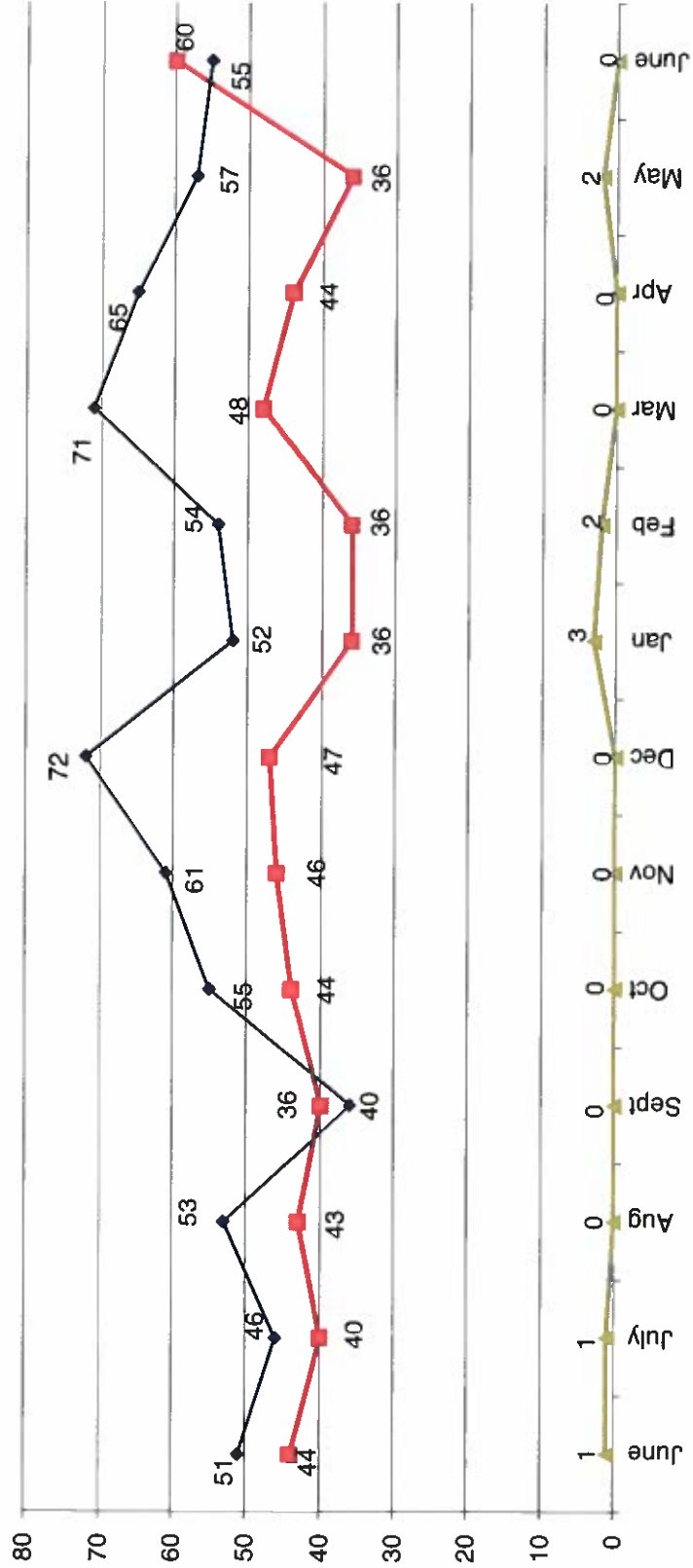
- 2021 -

Part 1 Crimes by Month (Violent Crimes) 2021



- 2020 - Month - 2021 -

Traffic Collisions 2020 - 2021





UCR Crimes by GeoArea

Required Parameters
 Reporting Period: Jun 2021
 Agency: OCEANSIDE

Optional Parameters
 Geographical Area: All Beats
 Group by: Agency Select by: Neighborhood

Prior Report Number: S1STA120

Neighborhood	MURDER	RAPE (HISTORICAL)	RAPE (HISTORICAL)	ROBBERY--	AGGRVD	VIOLENT	BURGLARY	LARCENY-THEFT--	M.VEH	PROPERTY	CRIME	CAR				
			ARMED	ST/ ARM	ASSAULT	CRM TL	RESID	NRESID	TOTAL	\$400+	<\$400	TOTAL	THEFT	CRM TL	IDX TL	PROWL
Agency = OCEANSIDE																
AIRPORT	0	1	0	0	0	0	0	1	1	0	2	2	0	3	4	0
EASTSIDE/CAPISTRANO	1	1	0	1	0	3	6	1	1	3	2	5	2	8	14	1
FIRE MOUNTAIN	0	1	0	0	3	3	4	0	1	5	26	31	0	32	36	9
GUAJOME	0	0	0	0	3	3	3	4	4	2	7	9	1	14	17	2
IVY RANIRAN DEL ORO	0	-1	0	0	3	2	2	4	6	11	11	22	3	31	33	12
LAKE	0	0	0	1	0	1	0	4	4	7	5	12	0	16	17	3
MIRA COSTA	0	0	0	0	1	1	2	0	2	6	3	9	2	13	14	8
MISSN MESALOMA ALTA	0	1	0	1	7	10	0	0	0	2	10	12	5	17	27	6
MORRO HILLS	0	0	0	0	0	0	0	0	0	0	0	0	0	0	0	0
NORTH VALLEY	0	1	1	1	0	3	5	0	0	2	1	3	2	5	10	2
OCEAN HILLS	0	0	0	0	0	0	0	0	0	3	1	4	0	4	4	1
OCEANA	0	0	0	0	0	0	0	0	0	0	0	0	1	1	1	0
SAN LUIS REY	0	4	2	0	1	4	9	6	4	7	11	18	0	28	37	6
SOUTH OCEANSIDE	0	1	1	0	0	2	3	0	1	13	6	19	1	21	24	8
TOWNSITE	0	3	3	2	1	17	23	2	4	24	17	41	5	52	75	18
TRI CITY	0	0	0	1	1	1	3	0	0	2	6	8	2	10	13	3
UNKNOWN	0	0	0	0	0	0	0	0	0	0	0	0	1	1	1	0
SUB-TOTAL	1	12	7	7	4	47	71	17	19	87	108	195	25	256	327	79
GRAND TOTALS	1	12	7	7	4	47	71	17	19	87	108	195	25	256	327	79



UCR Crimes by GeoArea

Required Parameters
 Reporting Period: Jan 2021 to Jun 2021
 Agency: OCEANSIDE

Optional Parameters
 Geographical Area: All Beats
 Group by: Agency **Select by: Neighborhood**

Prior Report Number: S1STA120

Neighborhood	MURDER	RAPE (HISTORICAL)	RAPE (HISTORICAL)	ROBBERY--	ARMED	ST/ ARM	ASSAULT	VIOLENT	BURGLARY---	TOTAL	\$400+	<\$400	TOTAL	THEFT	CRM TL	IDX TL	CRIME	CAR
Agency = OCEANSIDE																		
AIRPORT	0	3	1	0	0	0	5	8	1	5	6	16	17	33	4	43	51	13
EASTSIDE/CAPISTRANO	2	3	0	3	4	4	15	27	9	7	16	25	30	55	12	83	110	31
FIRE MOUNTAIN	0	3	3	1	3	3	14	21	3	14	17	49	89	138	7	162	183	49
GUAJOME	0	4	4	2	2	2	8	16	8	1	9	36	41	77	5	91	107	34
IVY RAN/RAN DEL ORO	1	5	3	1	1	1	23	31	11	16	27	75	74	149	15	191	222	102
LAKE	0	0	0	5	9	9	12	26	4	7	11	29	49	78	5	94	120	17
MIRA COSTA	0	0	0	0	0	0	7	7	5	5	10	25	31	56	16	82	89	40
MISSN MESA/LOMA ALTA	0	2	0	5	8	8	22	37	11	5	16	40	66	106	19	141	178	56
MORRO HILLS	0	0	0	0	0	0	1	1	1	0	1	10	3	13	3	17	18	8
NORTH VALLEY	0	3	4	2	0	0	13	18	5	0	5	21	25	46	11	62	80	26
OCEAN HILLS	0	0	0	0	0	0	5	5	3	0	3	19	19	38	11	52	57	27
OCEANA	0	0	0	0	1	4	4	5	3	0	3	6	7	13	4	20	25	5
SAN LUIS REY	0	13	7	1	2	31	31	47	20	9	29	46	70	116	12	157	204	43
SOUTH OCEANSIDE	0	2	1	1	4	11	11	18	6	5	11	43	52	95	10	116	134	52
TOWNSITE	1	10	9	5	10	69	69	95	12	18	30	123	124	247	44	321	416	112
TRI CITY	0	2	1	4	2	12	12	20	2	3	5	26	44	70	6	81	101	31
UNKNOWN	0	0	0	0	0	-1	-1	-1	0	0	0	0	0	0	0	0	-1	0
SUB-TOTAL	4	50	33	30	46	251	251	331	104	95	199	589	741	1,330	184	1,713	2,094	646
GRAND TOTALS	4	50	33	30	46	251	251	331	104	95	199	589	741	1,330	184	1,713	2,094	646