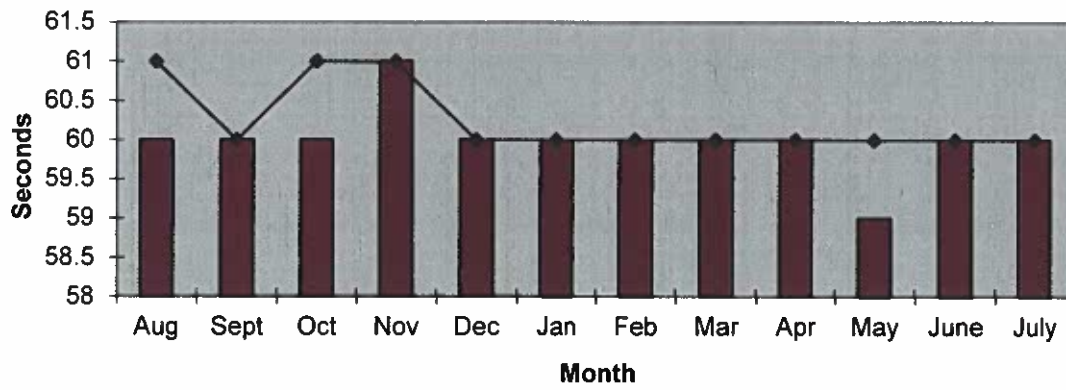
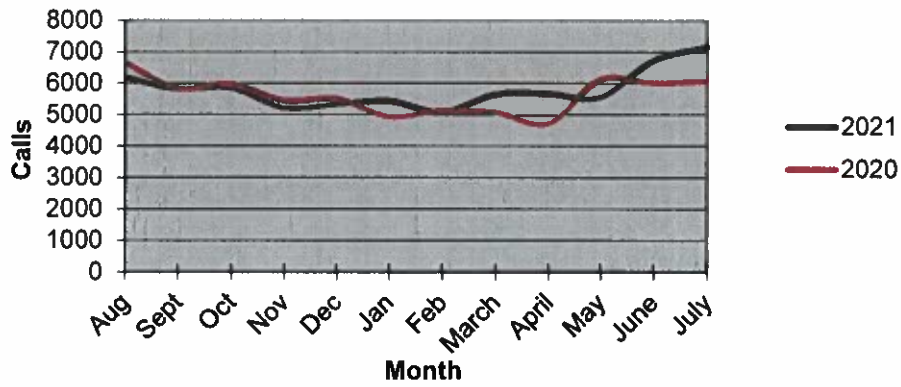


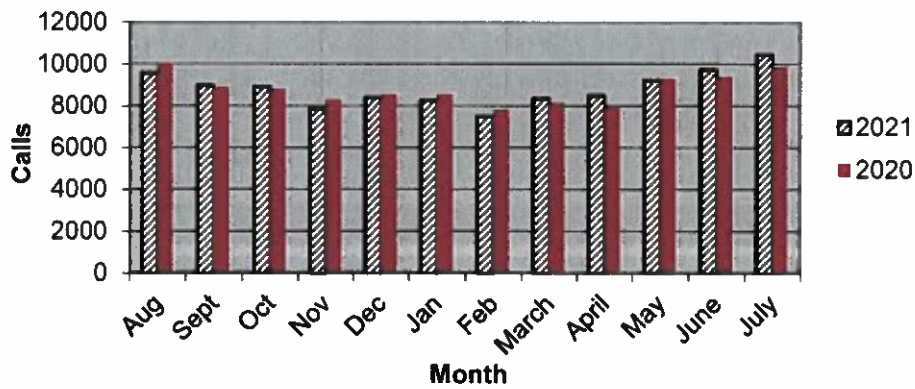
### Priority 1 Dispatch Times- Police



### 911 Calls



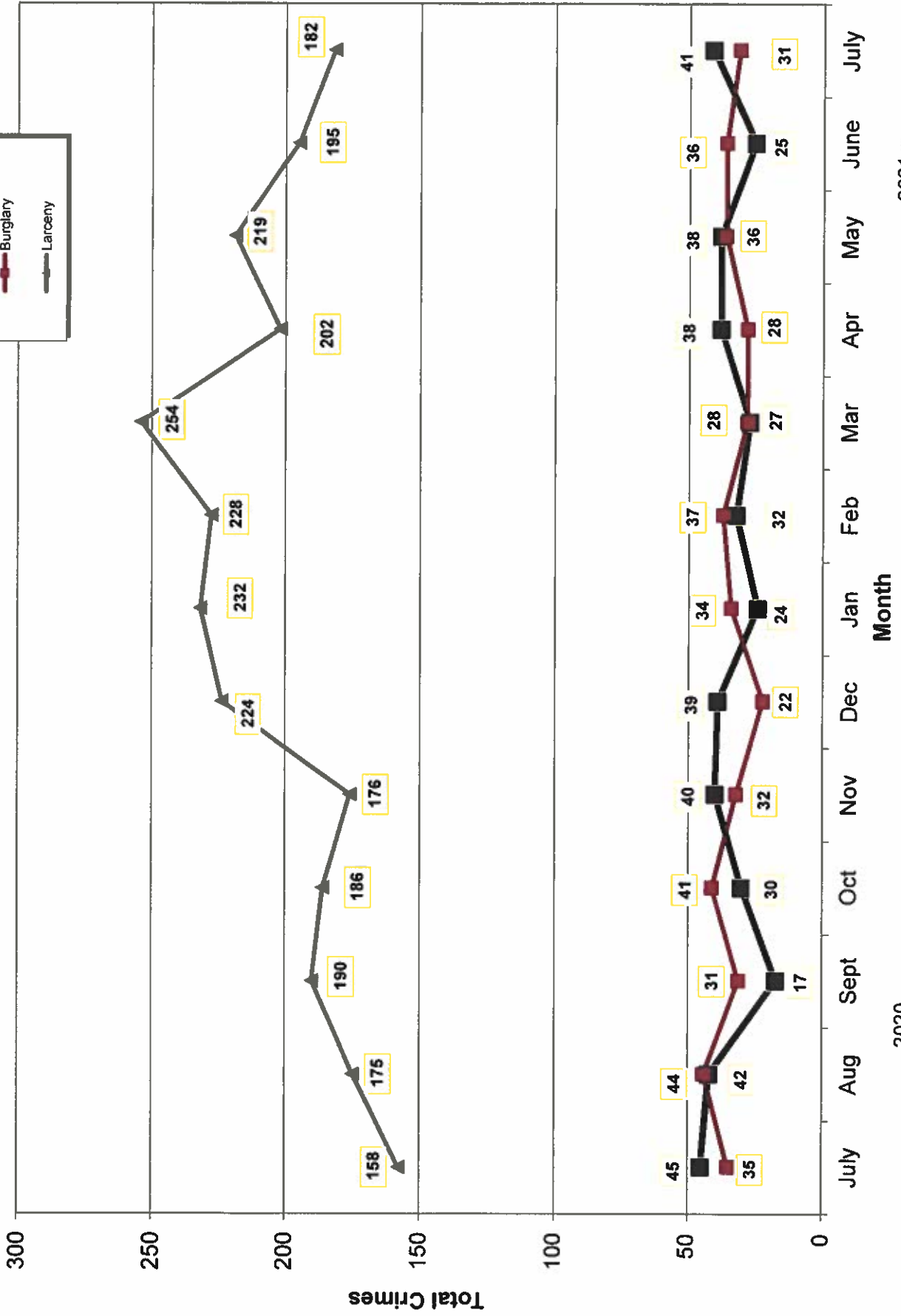
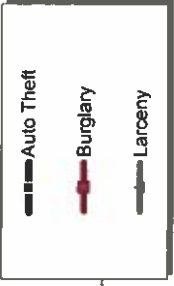
### Calls for Service



**OCEANSIDE POLICE DEPARTMENT  
FBI INDEX CRIMES**

		MONTHLY CASE ACTIVITY 2021												YEAR TO DATE COMPARISON			% CHANGE
		JAN	FEB	MAR	APR	MAY	JUN	JUL	AUG	SEP	OCT	NOV	DEC	2020	2021	CHANGE	
		Actual	Cleared	Actual	Cleared	Actual	Cleared	Actual	Cleared	Actual	Cleared	Actual	Cleared	Actual	Cleared	Change	
1. HOMICIDE	0	1	1	0	1	1	0	0	0	0	0	0	0	5	4	-1	-20.0%
	0	1	1	0	0	0	0	0	0	0	0	0	0	5	2	-3	-60.0%
2. RAPE	6	5	12	6	9	12	5	5	5	5	5	5	16	39	55	16	41.0%
	3	0	3	1	0	1	0	0	0	0	0	0	6	2	8	6	300.0%
3. ROBBERY	4	9	13	21	18	11	18	18	18	18	11	18	13	81	94	13	16.0%
	2	0	6	10	9	2	11	11	11	11	2	11	11	29	40	11	37.9%
4. AGGR. ASSAULT	38	31	49	44	42	47	47	47	47	47	47	47	9	289	298	9	3.1%
	18	12	24	19	17	26	24	24	24	24	26	24	8	132	140	8	6.1%
5. BURGLARY	34	37	28	28	36	36	31	31	31	31	4	4	-25	255	230	-25	-9.8%
	3	1	5	3	5	1	4	4	4	4	1	4	-16	38	22	-16	-42.1%
6. LARCENY THEFT	232	228	254	202	219	195	182	182	182	182	12	8	127	1385	1512	127	9.2%
	11	8	17	10	13	12	8	8	8	8	12	8	-22	101	79	-22	-21.8%
7. AUTO THEFT	24	32	27	38	38	25	41	41	41	41	3	2	-10	235	225	-10	-4.3%
	0	3	1	3	4	3	2	2	2	2	3	2	3	13	16	3	23.1%
TOTAL INDEX CRIMES	338	343	384	339	363	327	324	324	324	324	45	49	129	2289	2418	129	5.6%
	37	25	41	46	48	45	49	49	49	49	45	49	-29	320	291	-29	-9.1%
TOTAL PERSON CRIMES	48	46	75	71	70	71	70	70	70	70	71	70	37	414	451	37	8.9%
	23	13	34	30	26	29	35	35	35	35	29	35	22	168	190	22	13.1%
TOTAL PROPERTY CRIMES	290	297	309	268	293	256	254	254	254	254	256	254	92	1875	1967	92	4.9%
	14	12	23	16	22	16	14	14	14	14	16	14	-35	152	117	-35	-23.0%
ARSON	2	1	3	4	3	4	3	3	3	3	4	3	-7	27	20	-7	-25.9%
Y-T-D Loss \$111,805	2	0	2	1	2	4	1	1	1	1	2	1	0	12	12	0	0.0%

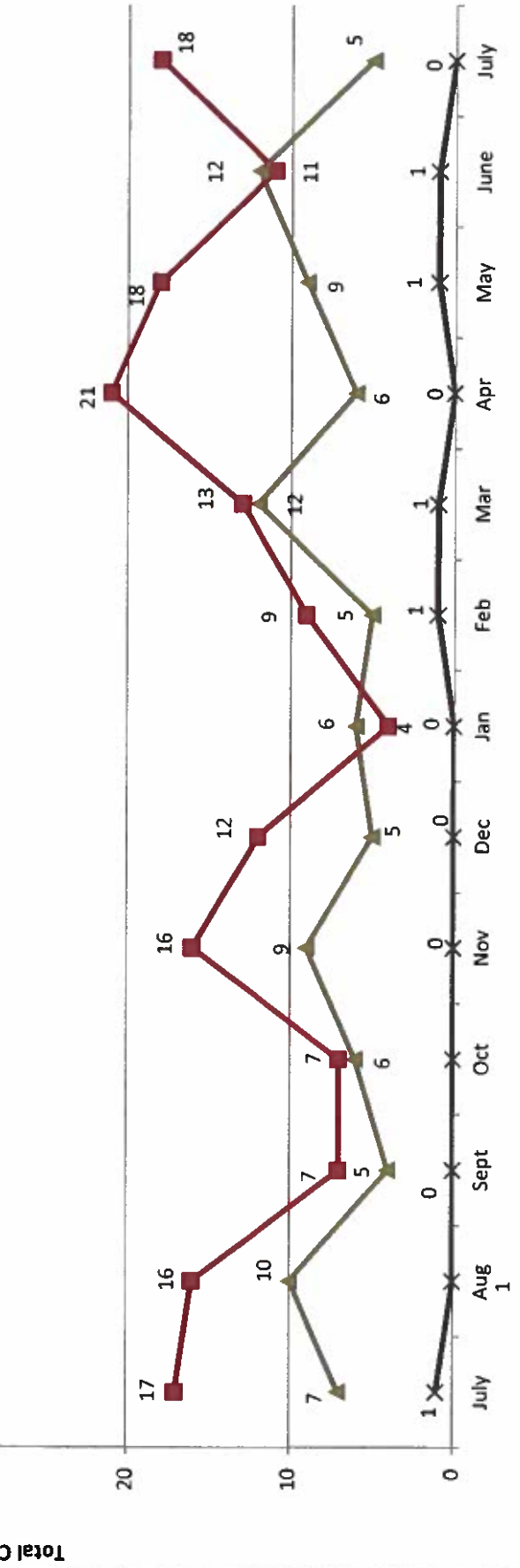
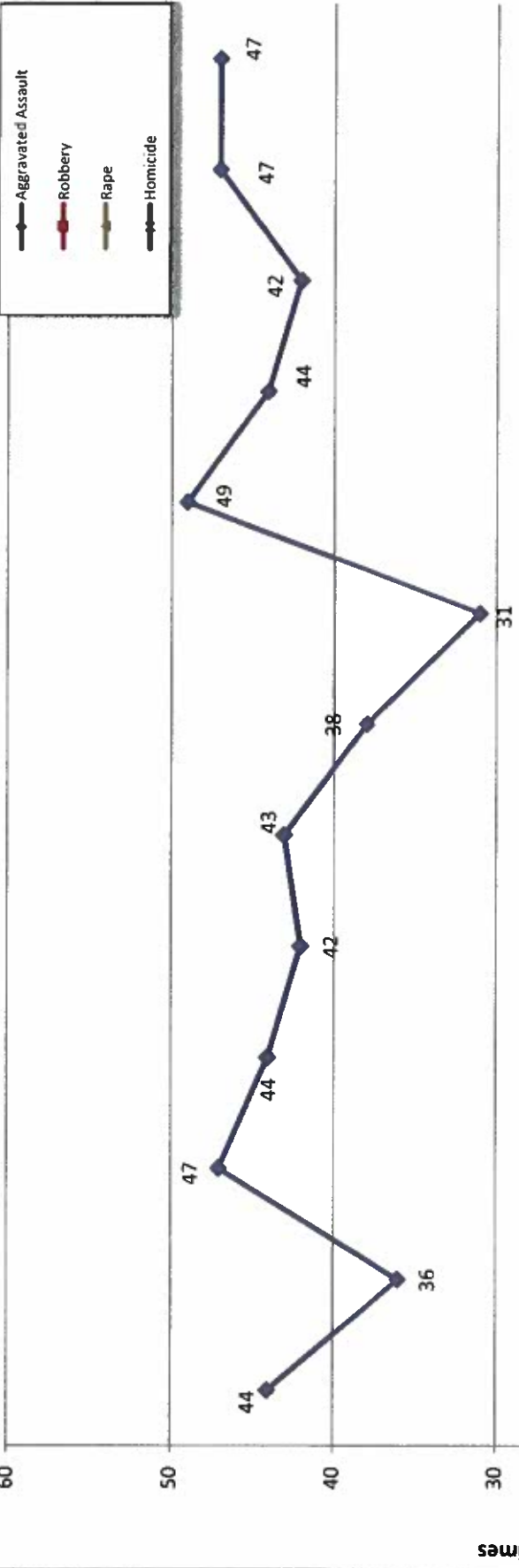
# Part 1 Crimes by Month (Property Crimes) 2021



- 2021 -

- 2020 -

# Part 1 Crimes by Month (Violent Crimes) 2021

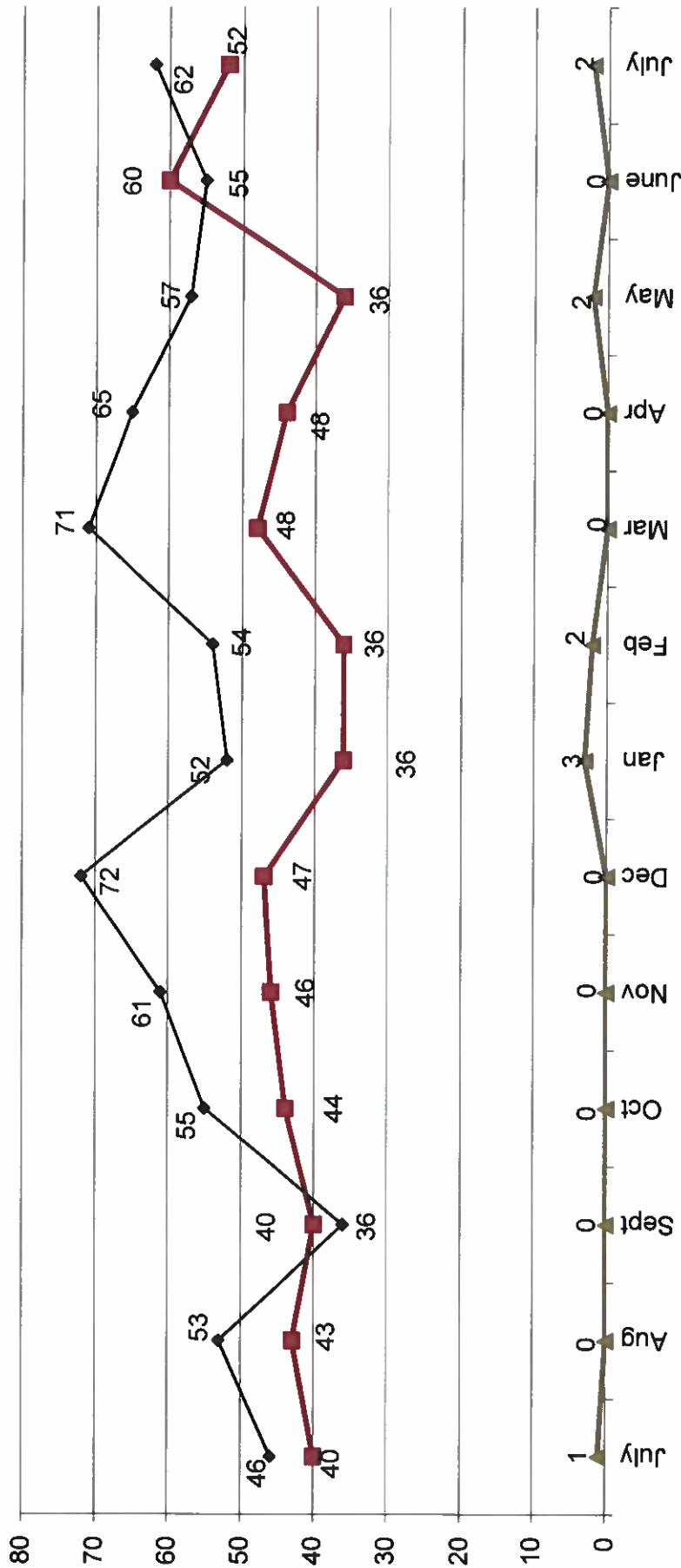
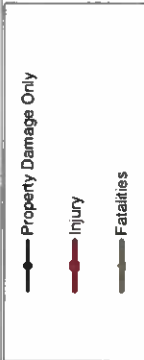


- 2020 -

- 2021 -

Month

### Traffic Collisions 2020 - 2021





# UCR Crimes by GeoArea

**Required Parameters**  
 Reporting Period: Jul 2021  
 Agency: OCEANSIDE

**Optional Parameters**  
 Geographical Area: All Beats  
 Group by: Agency **Select by: Neighborhood**

Prior Report Number: S1STA120

Neighborhood	MURDER	RAPE (HISTORICAL)	RAPE (HISTORICAL)	ROBBERY--	AGGRVD	VIOLENT	RESID	NRESID	TOTAL	\$400+	<\$400	TOTAL	THEFT	CRM TL	PROPERTY	CRIME	CAR	PROWL	
			ARMED	ST/ ARM	ASSAULT	CRM TL	RESID	NRESID	TOTAL	\$400+	<\$400	TOTAL	THEFT	CRM TL	PROPERTY	CRIME	CAR	PROWL	
<b>Agency = OCEANSIDE</b>																			
AIRPORT	0	0	0	0	1	0	0	0	0	1	0	1	0	1	0	1	2	0	0
EASTSIDE/CAPISTRANO	0	0	0	0	3	3	1	1	2	2	2	4	1	7	7	10	3	3	0
FIRE MOUNTAIN	0	0	0	0	4	6	0	3	3	6	13	19	1	23	23	29	4	4	0
GUAJOME	0	0	0	0	4	4	1	1	2	8	5	13	2	17	17	21	6	6	0
IVY RAN/RAN DEL ORO	0	0	0	0	3	3	3	1	4	10	7	17	5	26	26	29	9	9	0
LAKE	0	0	0	0	2	2	0	1	1	1	3	4	3	8	8	10	1	1	0
MIRA COSTA	0	0	0	0	3	3	0	1	1	5	9	14	2	17	17	20	9	9	0
MISSN MESA/LOMA ALTA	0	1	0	0	7	10	1	0	1	5	11	16	5	22	22	32	11	11	0
MORRO HILLS	0	0	0	0	1	1	0	0	0	0	0	0	1	1	1	2	0	0	0
NORTH VALLEY	0	0	1	0	1	2	1	0	1	3	1	4	3	8	8	10	1	1	0
OCEAN HILLS	0	0	0	0	1	1	0	0	0	4	0	4	0	4	4	5	2	2	0
OCEANA	0	0	0	0	1	2	0	1	1	0	2	2	1	4	4	6	1	1	0
SAN LUIS REY	0	2	1	0	1	4	2	2	4	7	15	22	1	27	27	31	13	13	0
SOUTH OCEANSIDE	0	1	0	0	4	5	1	1	2	3	7	10	4	16	16	21	6	6	0
TOWNSITE	0	1	0	2	8	17	4	3	7	18	26	44	10	61	61	78	22	22	0
TRI CITY	0	0	0	2	4	6	0	2	2	6	2	8	2	12	12	18	5	5	0
UNKNOWN	0	0	0	0	0	0	0	0	0	0	0	0	0	0	0	0	0	0	0
<b>SUB-TOTAL</b>	<b>0</b>	<b>5</b>	<b>1</b>	<b>3</b>	<b>15</b>	<b>70</b>	<b>14</b>	<b>17</b>	<b>31</b>	<b>79</b>	<b>103</b>	<b>182</b>	<b>41</b>	<b>254</b>	<b>254</b>	<b>324</b>	<b>93</b>	<b>93</b>	<b>0</b>
<b>GRAND TOTALS</b>	<b>0</b>	<b>5</b>	<b>1</b>	<b>3</b>	<b>15</b>	<b>70</b>	<b>14</b>	<b>17</b>	<b>31</b>	<b>79</b>	<b>103</b>	<b>182</b>	<b>41</b>	<b>254</b>	<b>254</b>	<b>324</b>	<b>93</b>	<b>93</b>	<b>0</b>



# UCR Crimes by GeoArea

**Required Parameters**  
 Reporting Period: Jan 2021 to Jul 2021  
 Agency: OCEANSIDE

**Optional Parameters**  
 Geographical Area: All Beats  
 Group by: Agency Select by: Neighborhood

Prior Report Number: S1STA120

Neighborhood	MURDER	RAPE	RAPE (HISTORICAL)	ROBBERY--	ST/ ARM	ASSAULT	VIOLENT	RESID	NRESID	TOTAL	\$400+	<\$400	TOTAL	THEFT	CRM TL	IDX TL	CRIME	CAR	
				ROBBERY--	ARMED	ST/ ARM	AGGRVD	VIOLENT	RESID	NRESID	TOTAL	\$400+	<\$400	TOTAL	THEFT	CRM TL	IDX TL	CRIME	CAR
Agency = OCEANSIDE																			
AIRPORT	0	3	1	0	1	5	9	1	5	6	17	17	34	4	44	53	13		
EASTSIDE/CAPISTRANO	2	3	0	3	4	18	30	10	8	18	27	32	59	13	90	120	34		
FIRE MOUNTAIN	0	3	3	1	5	18	27	3	17	20	55	102	157	8	185	212	53		
GUAJOME	0	4	4	2	2	12	20	9	2	11	44	46	90	7	108	128	40		
IVY RAN/RAN DEL ORO	1	5	3	1	1	26	34	14	17	31	85	81	166	20	217	251	111		
LAKE	0	0	0	5	9	14	28	4	8	12	30	52	82	8	102	130	18		
MIRA COSTA	0	0	0	0	0	10	10	5	6	11	30	40	70	18	99	109	49		
MISSN MESALOMA ALTA	0	3	0	5	10	29	47	12	5	17	45	77	122	24	163	210	67		
MORRO HILLS	0	0	0	0	0	2	2	1	0	1	10	3	13	4	18	20	8		
NORTH VALLEY	0	3	4	3	0	14	20	6	0	6	24	26	50	14	70	90	27		
OCEAN HILLS	0	0	0	0	0	6	6	3	0	3	23	19	42	11	56	62	29		
OCEANA	0	0	0	0	2	5	7	3	1	4	6	9	15	5	24	31	6		
SAN LUIS REY	0	15	8	1	3	32	51	22	11	33	53	85	138	13	184	235	56		
SOUTH OCEANSIDE	0	3	1	1	4	15	23	7	6	13	46	59	105	14	132	155	58		
TOWNSITE	1	11	9	7	16	77	112	16	21	37	141	150	291	54	382	484	134		
TRI CITY	0	2	1	4	4	16	26	2	5	7	32	46	78	8	93	119	36		
UNKNOWN	0	0	0	0	0	-1	-1	0	0	0	0	0	0	0	0	-1	0		
SUB-TOTAL	4	55	34	33	61	298	451	118	112	230	668	844	1,512	225	1,967	2,418	739		
GRAND TOTALS	4	55	34	33	61	298	451	118	112	230	668	844	1,512	225	1,967	2,418	739		