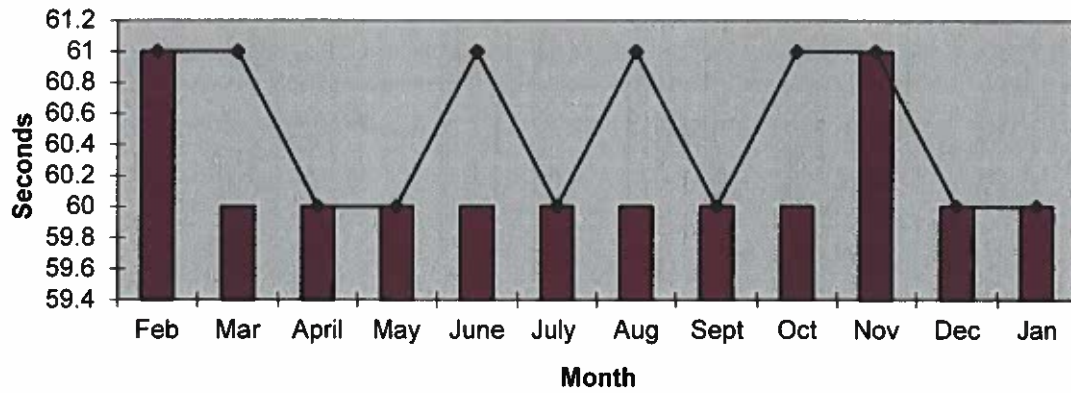
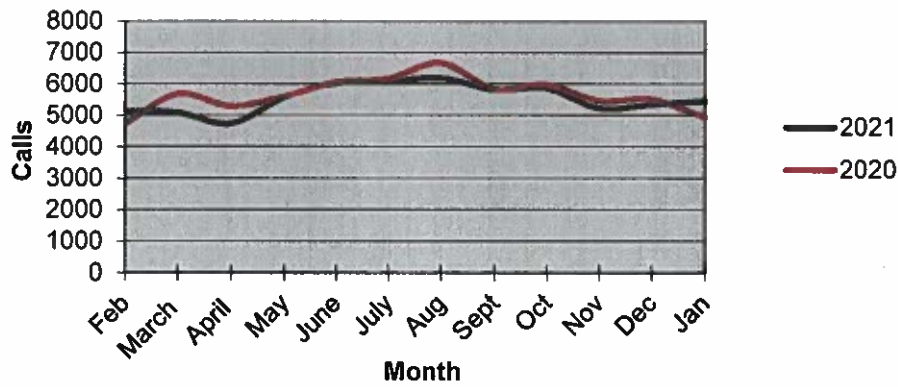


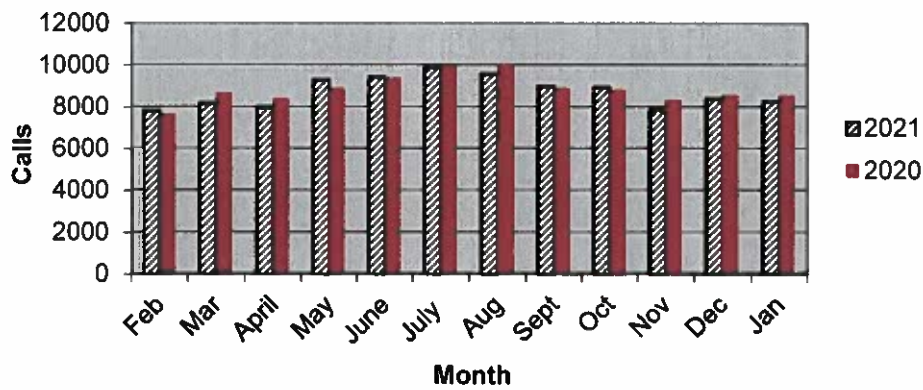
### Priority 1 Dispatch Times- Police



### 911 Calls



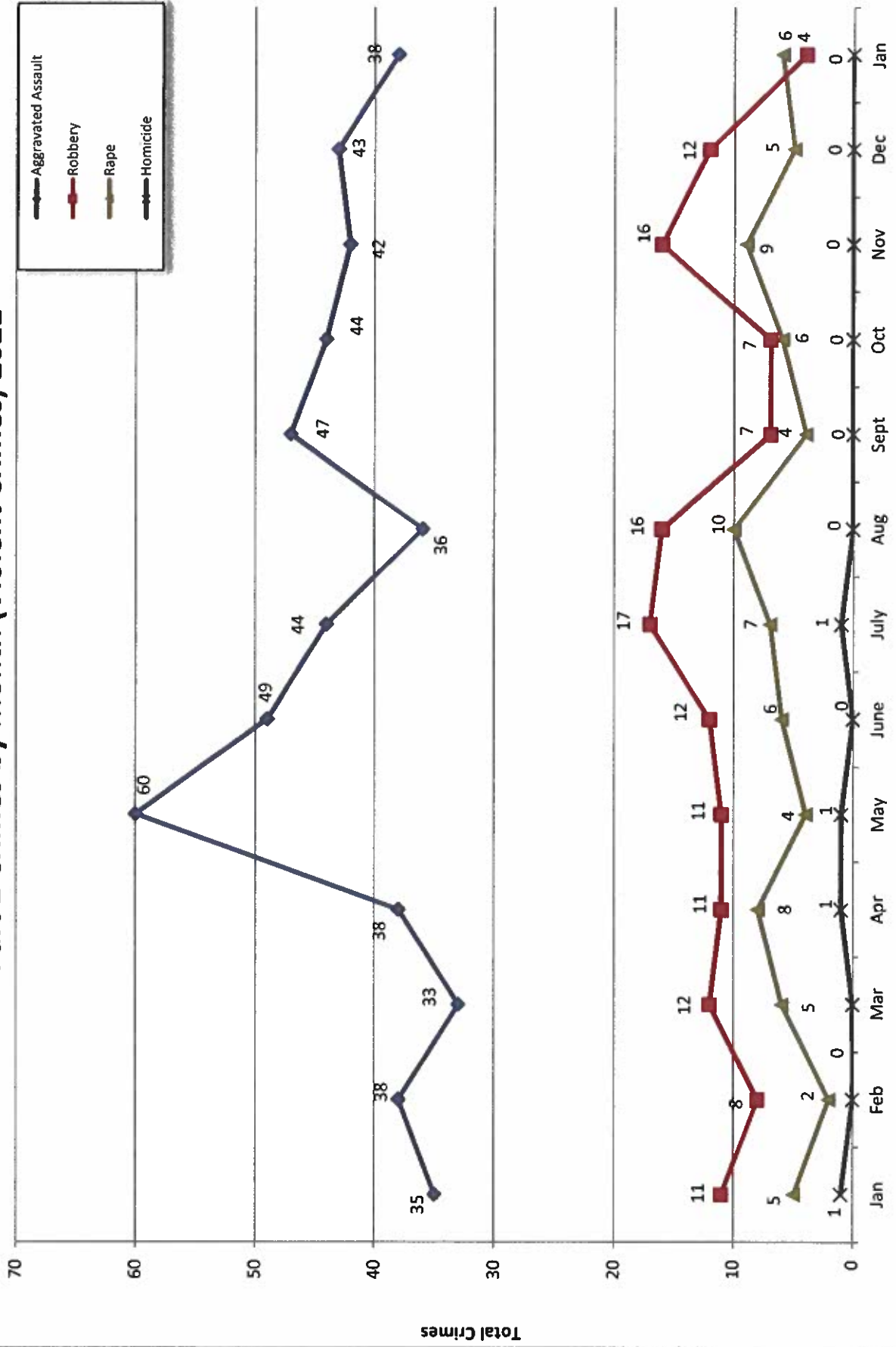
### Calls for Service



**OCEANSIDE POLICE DEPARTMENT  
FBI INDEX CRIMES**

	MONTHLY CASE ACTIVITY 2021												YEAR TO DATE COMPARISON		% CHANGE	
	JAN	FEB	MAR	APR	MAY	JUN	JUL	AUG	SEP	OCT	NOV	DEC	2020	2021		
													CHANGE	CHANGE		
1. HOMICIDE	0	0											2	0	-2	-200.0%
	Cleared												2	0	-2	-200.0%
2. RAPE	6												6	6	0	0.0%
	Cleared												0	3	3	300.0%
3. ROBBERY	4												10	4	-6	-60.0%
	Cleared												5	2	-3	-60.0%
4. AGGR. ASSAULT	38												20	38	18	90.0%
	Cleared												13	18	5	38.5%
5. BURGLARY	34												29	34	5	17.2%
	Cleared												5	3	-2	-40.0%
6. LARCENY THEFT	232												202	232	30	14.9%
	Cleared												22	11	-11	-50.0%
7. AUTO THEFT	24												29	24	-5	-17.2%
	Cleared												2	0	-2	200.0%
TOTAL INDEX CRIMES	338												298	338	40	13.4%
	Cleared												49	0	-49	-100.0%
TOTAL PERSON CRIMES	48												38	48	10	26.3%
	Cleared												20	23	3	15.0%
TOTAL PROPERTY CRIMES	290												260	290	30	11.5%
	Cleared												29	14	-15	-51.7%
ARSON	2												4	2	-2	-50.0%
Y.T-D Loss \$502.00	2												0	2	2	0.0%

# Part 1 Crimes by Month (Violent Crimes) 2021

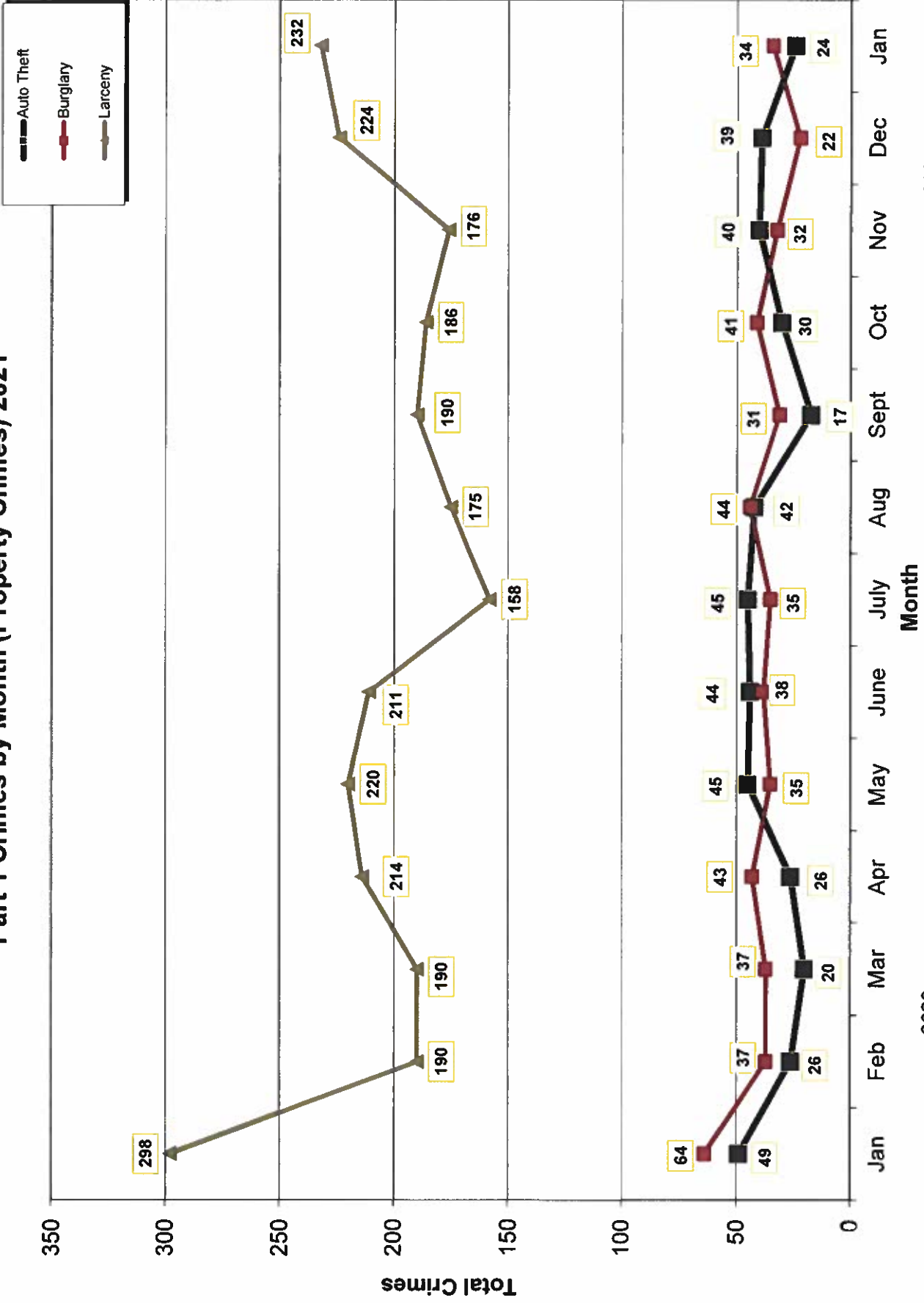


- 2021 -

Month

- 2020 -

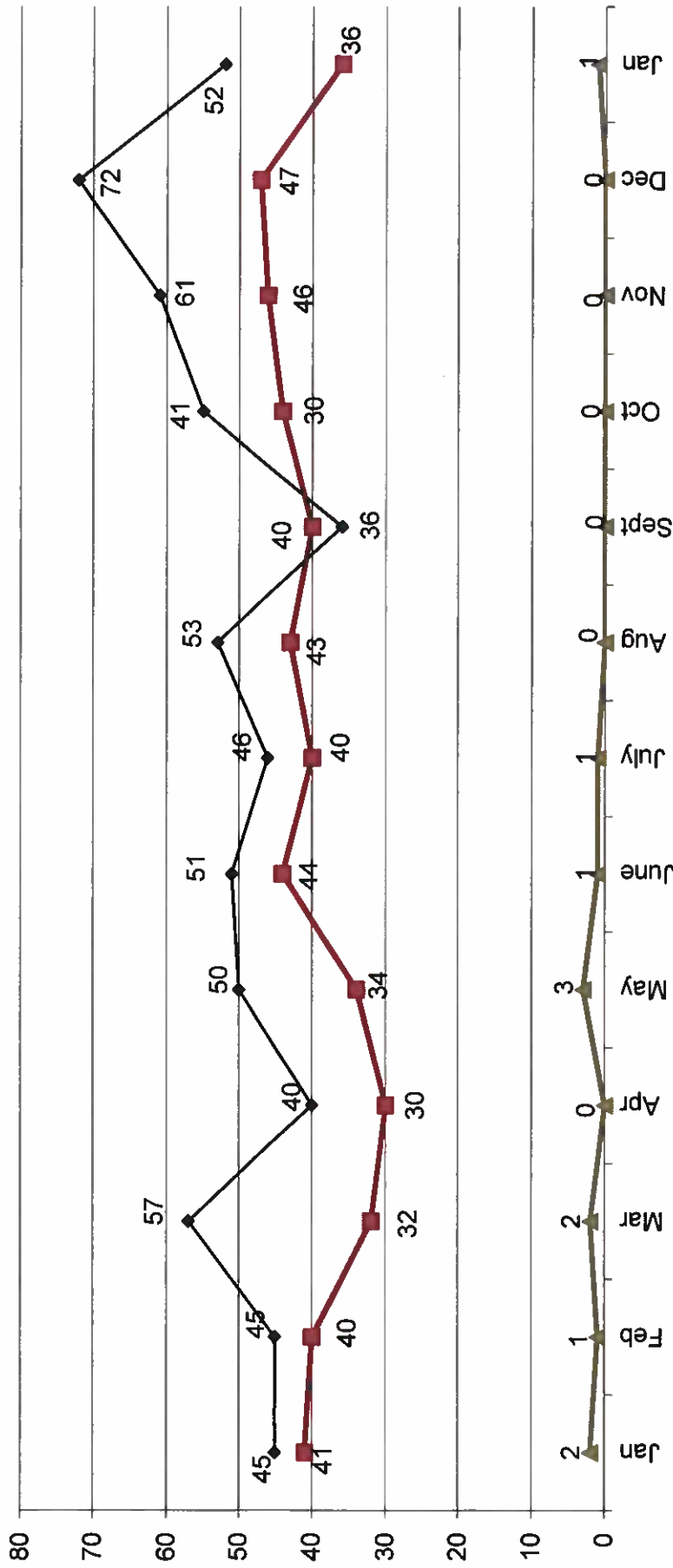
# Part 1 Crimes by Month (Property Crimes) 2021



- 2020 -

- 2021 -

### Traffic Collisions 2020 - 2021





# UCR Crimes by GeoArea

**Required Parameters**  
 Reporting Period: Jan 2021  
 Agency: OCEANSIDE

**Optional Parameters**  
 Geographical Area: All Beats  
 Group by: Agency Select by: Neighborhood

Prior Report Number: S1STA120

Neighborhood	MURDER	RAPE	RAPE (HISTORICAL)	ROBBERY--	AGGRVD	VIOLENT	BURGLARY----	LARCENY-THEFT--	M.VEH	PROPERTY	CRIME	CAR					
				ARMED	ST/ ARM	ASSAULT	CRIM TL	RESID	NRESID	TOTAL	\$400+	<\$400	TOTAL	THEFT	CRM TL	IDX TL	PROWL
Agency = OCEANSIDE																	
AIRPORT	0	1	1	0	0	1	2	1	0	1	4	2	6	0	7	9	3
EASTSIDE/CAPISTRANO	0	1	0	0	1	2	4	0	1	1	5	8	13	1	15	19	7
FIRE MOUNTAIN	0	0	0	0	0	2	2	0	5	5	10	10	20	1	26	28	11
GUAJOME	0	0	0	0	0	0	0	0	0	0	10	11	21	2	23	23	11
IVY RAN/RAN DEL ORO	0	1	1	0	0	4	5	2	2	4	14	16	30	2	36	41	26
LAKE	0	0	0	1	0	1	2	1	0	1	3	3	6	0	7	9	2
MIRA COSTA	0	0	0	0	0	1	1	0	3	3	2	6	8	4	15	16	4
MISSN MESA/LOMA ALTA	0	0	0	1	0	3	4	1	2	3	7	12	19	1	23	27	11
MORRO HILLS	0	0	0	0	0	-1	-1	0	0	0	1	0	1	0	1	0	0
NORTH VALLEY	0	0	0	1	0	2	3	2	0	2	2	5	7	0	9	12	6
OCEAN HILLS	0	0	0	0	0	2	2	1	0	1	2	5	7	2	10	12	5
OCEANA	0	0	0	0	0	1	1	0	0	0	2	1	3	0	3	4	2
SAN LUIS REY	0	1	0	0	0	5	6	2	-1	1	8	15	23	0	24	30	12
SOUTH OCEANSIDE	0	0	0	0	0	3	3	1	1	2	7	8	15	2	19	22	7
TOWNSITE	0	2	2	0	0	10	12	4	4	8	16	16	32	8	48	60	17
TRI CITY	0	0	0	0	0	2	2	0	2	2	8	13	21	1	24	26	12
UNKNOWN	0	0	0	0	0	0	0	0	0	0	0	0	0	0	0	0	0
SUB-TOTAL	0	6	4	3	1	38	48	15	19	34	101	131	232	24	290	338	136
GRAND TOTALS	0	6	4	3	1	38	48	15	19	34	101	131	232	24	290	338	136