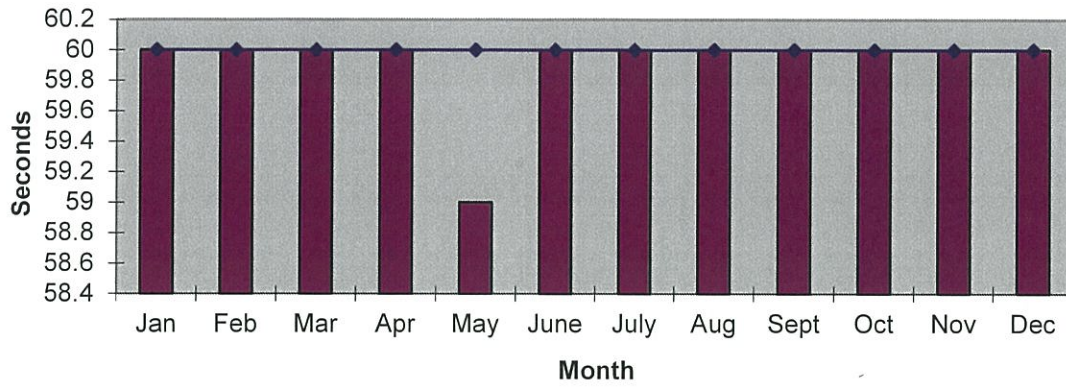
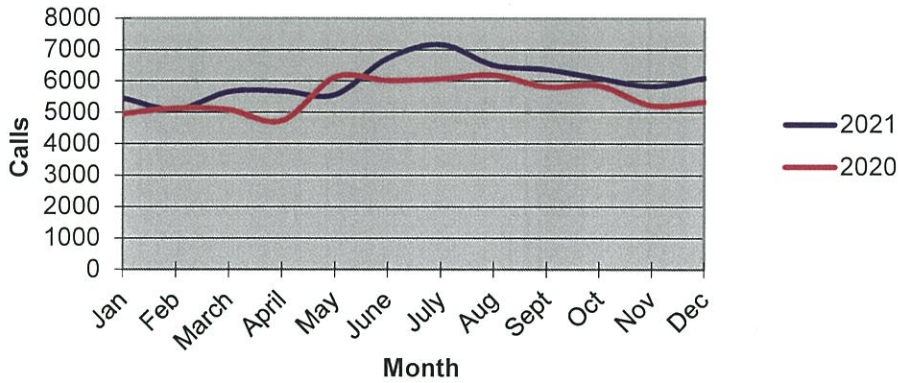


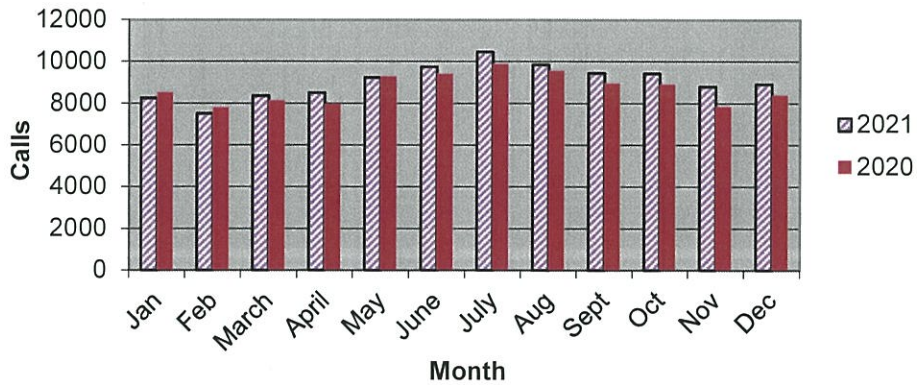
Priority 1 Dispatch Times- Police



911 Calls



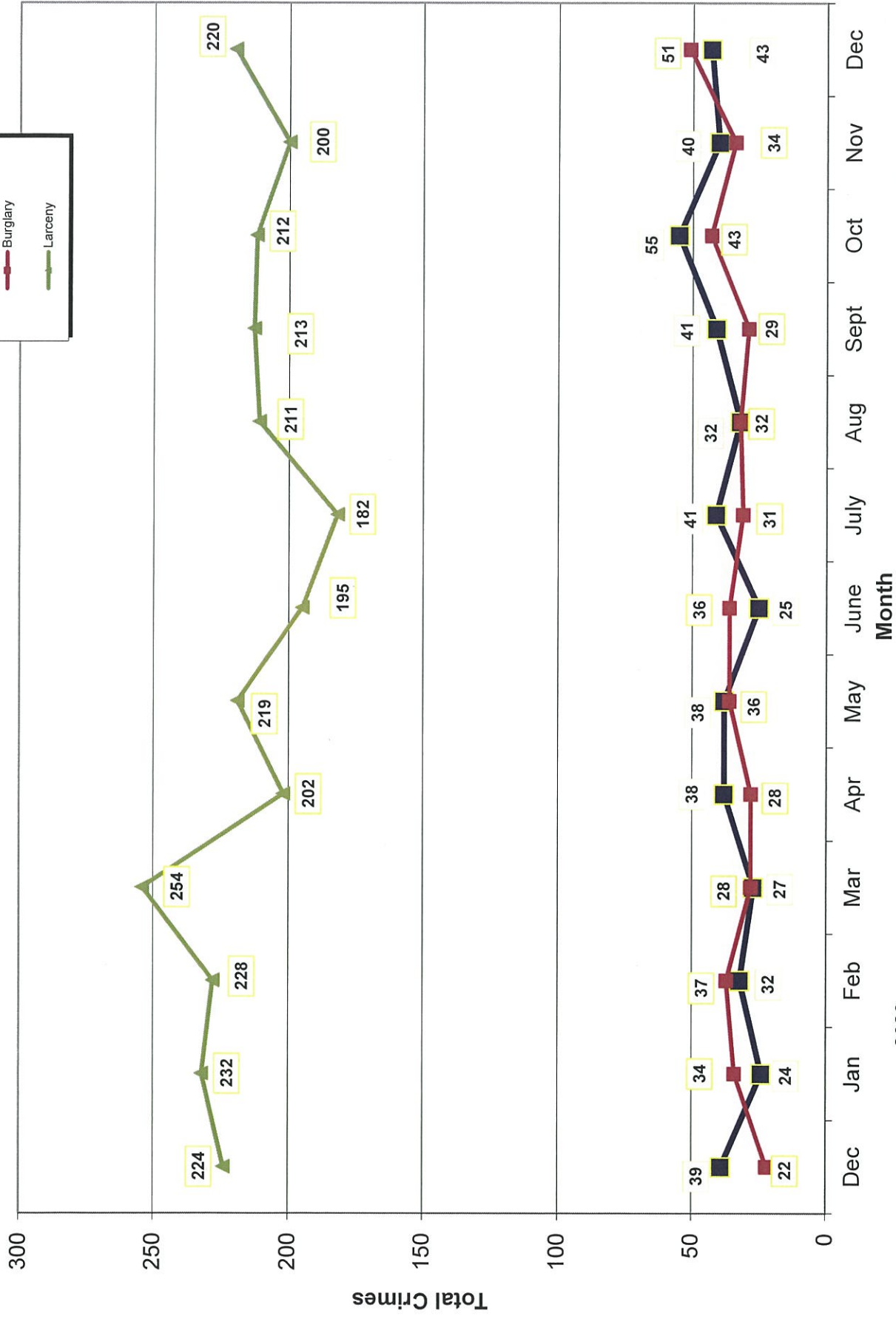
Calls for Service



**OCEANSIDE POLICE DEPARTMENT
FBI INDEX CRIMES**

		MONTHLY CASE ACTIVITY 2021												YEAR TO DATE COMPARISON			% CHANGE			
		JAN	FEB	MAR	APR	MAY	JUN	JUL	AUG	SEP	OCT	NOV	DEC	2020	2021	CHANGE				
1. HOMICIDE	Actual	0	1	1	0	1	1	0	0	0	0	0	0	0	1	1	5	6	1	20.0%
	Cleared	0	1	1	0	0	0	0	0	0	0	0	0	0	1	0	5	3	-2	-40.0%
2. RAPE	Actual	6	5	12	6	9	12	5	10	4	14	6	5	5	21	73	94	21	28.8%	
	Cleared	3	0	3	1	0	1	0	1	1	0	0	1	1	7	4	11	7	175.0%	
3. ROBBERY	Actual	4	9	13	21	18	11	18	12	16	18	18	11	30	139	169	30	21.6%		
	Cleared	2	0	6	10	9	2	11	4	4	5	5	4	12	50	62	12	24.0%		
4. AGGR. ASSAULT	Actual	38	31	49	44	42	47	47	64	60	37	65	29	52	501	553	52	10.4%		
	Cleared	18	12	24	19	17	26	24	34	26	17	32	14	41	222	263	41	18.5%		
5. BURGLARY	Actual	34	37	28	28	36	36	31	32	29	43	34	51	-6	425	419	-6	-1.4%		
	Cleared	3	1	5	3	5	1	4	5	5	10	8	5	1	54	55	1	1.9%		
6. LARCENY THEFT	Actual	232	228	254	202	219	195	182	211	213	212	200	220	232	2336	2568	232	9.9%		
	Cleared	11	8	17	10	13	12	8	17	15	6	11	31	-17	176	159	-17	-9.7%		
7. AUTO THEFT	Actual	24	32	27	38	38	25	41	32	41	55	40	43	17	419	436	17	4.1%		
	Cleared	0	3	1	3	4	3	2	2	4	4	7	2	0	35	35	0	0.0%		
TOTAL INDEX CRIMES	Actual	338	343	384	339	363	327	324	361	363	379	364	360	347	3898	4245	347	8.9%		
	Cleared	37	25	57	46	48	45	49	63	55	42	64	57	42	546	588	42	7.7%		
TOTAL PERSON CRIMES	Actual	48	46	75	71	70	71	70	86	80	69	90	46	104	718	822	104	14.5%		
	Cleared	23	13	34	30	26	29	35	39	31	22	38	19	58	281	339	58	20.6%		
TOTAL PROPERTY CRIMES	Actual	290	297	309	268	293	256	254	275	283	310	274	314	243	3180	3423	243	7.6%		
	Cleared	14	12	23	16	22	16	14	24	24	20	26	38	-16	265	249	-16	-6.0%		
ARSON	Actual	2	1	3	4	3	4	3	3	3	2	5	6	0	48	48	0	0.0%		
Y-T-D Loss \$115,456	Cleared	2	0	2	1	2	4	1	1	2	1	1	2	-5	24	19	-5	-20.8%		

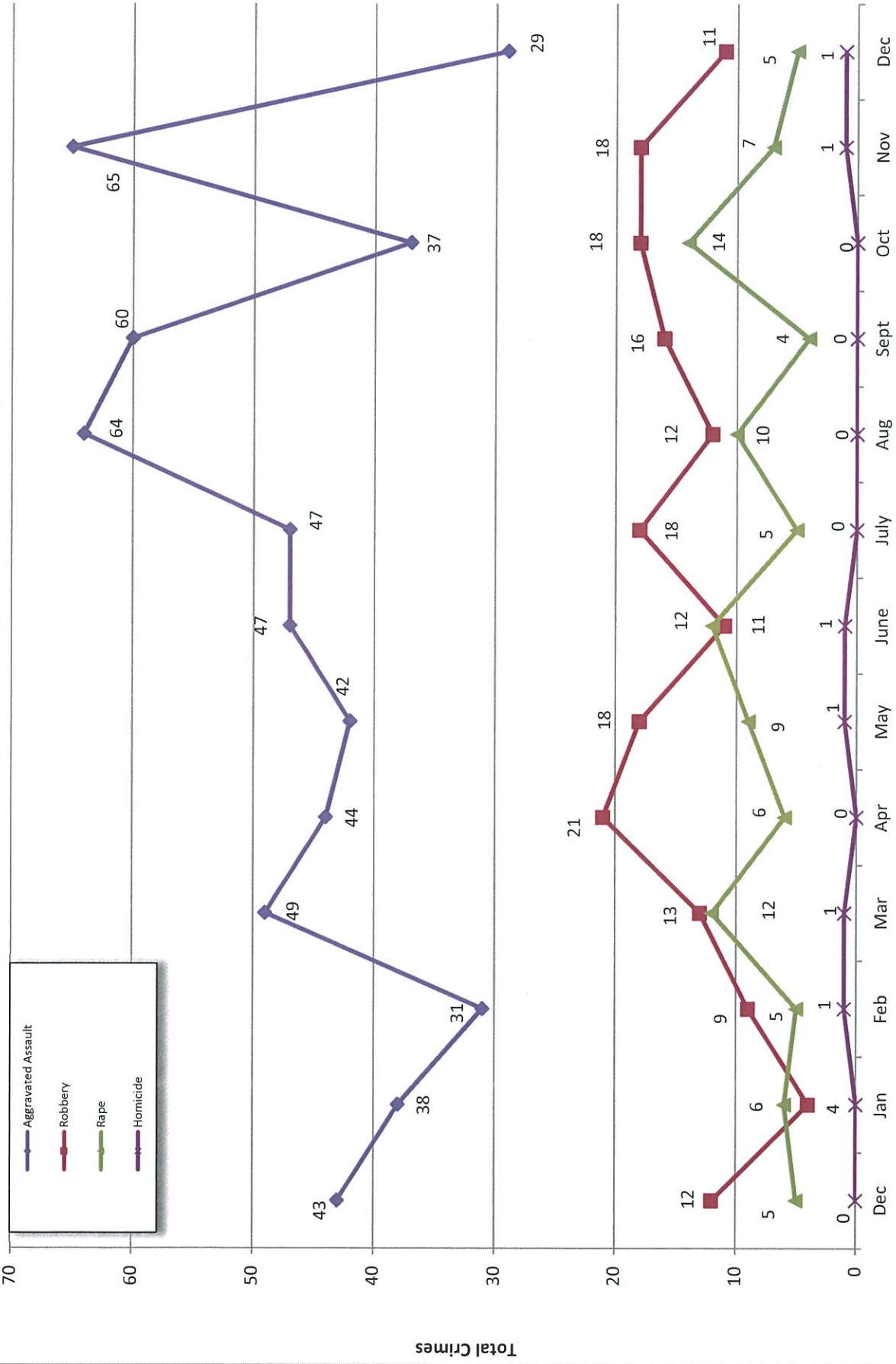
Part 1 Crimes by Month (Property Crimes) 2021



- 2020 -

- 2021 -

Part 1 Crimes by Month (Violent Crimes) 2021

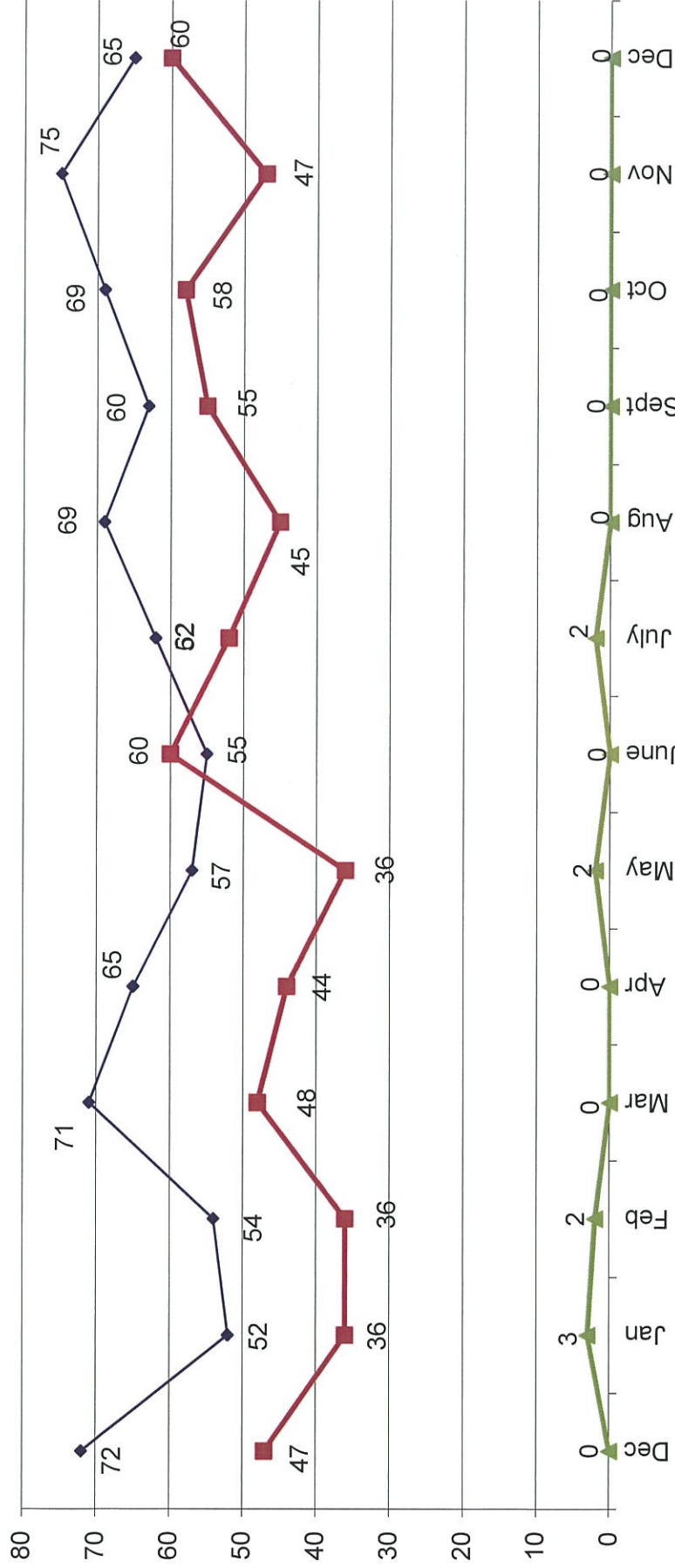
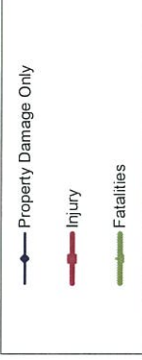


- 2020 -

Month

- 2021 -

Traffic Collisions 2020 - 2021





UCR Crimes by GeoArea

Required Parameters

Reporting Period: Dec 2021

Agency: OCEANSIDE

Optional Parameters

Geographical Area: All Beats

Group by: Agency Select by: Neighborhood

Prior Report Number: S1STA120

Neighborhood	MURDER	RAPE (HISTORICAL)	RAPE (HISTORICAL)	ROBBERY---	AGGRVD	VIOLENT	BURGLARY-----	TOTAL	\$400+	<\$400	TOTAL	THEFT	CRM TL	IDX TL	CRIME	CAR	PROWL
					---	---	---	---	---	---	---	---	---	---	---	---	---
Agency = OCEANSIDE																	
AIRPORT	0	0	0	0	0	0	0	1	3	4	7	0	8	8	8	4	4
EASTSIDE/CAPISTRANO	0	0	0	0	2	3	1	4	2	4	6	2	12	15	15	4	4
FIRE MOUNTAIN	0	1	0	0	0	1	2	3	16	22	38	8	49	50	17	17	17
GUAJOME	0	0	0	0	1	1	0	1	4	6	10	0	11	12	5	5	5
IVY RAN/RAN DEL ORO	0	0	0	0	3	2	3	5	11	15	26	4	35	38	14	14	14
LAKE	0	0	0	0	2	1	0	1	11	5	16	1	18	20	5	5	5
MIRA COSTA	0	0	0	0	1	3	2	5	8	6	14	2	21	22	8	8	8
MISSN MESALOMA ALTA	1	0	0	1	4	4	1	5	6	13	19	6	30	37	10	10	10
MORRO HILLS	0	0	0	0	0	2	1	3	2	0	2	2	7	7	2	2	2
NORTH VALLEY	0	-1	1	0	4	4	1	2	5	3	8	1	11	15	7	7	7
OCEAN HILLS	0	0	0	0	2	2	0	0	1	2	3	0	3	5	2	2	2
OCEANA	0	0	0	0	0	0	1	1	2	2	4	0	5	5	3	3	3
SAN LUIS REY	0	-1	0	1	4	4	1	4	12	9	21	7	33	37	11	11	11
SOUTH OCEANSIDE	0	2	2	0	1	3	0	6	6	2	8	0	14	17	3	3	3
TOWNSITE	0	2	1	0	3	7	3	8	16	10	26	8	42	49	13	13	13
TRI CITY	0	2	1	0	5	8	1	1	4	6	10	2	13	21	2	2	2
UNKNOWN	0	0	0	0	0	0	0	0	1	1	2	0	2	2	1	1	1
SUB-TOTAL	1	5	3	2	9	29	25	51	110	110	220	43	314	360	111	111	111
GRAND TOTALS	1	5	3	2	9	29	25	51	110	110	220	43	314	360	111	111	111



UCR Crimes by GeoArea

Required Parameters
 Reporting Period: Jan 2021 to Dec 2021
 Agency: OCEANSIDE

Optional Parameters
 Geographical Area: All Beats
 Group by: Agency Select by: Neighborhood

Prior Report Number: S1STA120

Neighborhood	MURDER	RAPE (HISTORICAL)	RAPE (HISTORICAL)	ROBBERY--	ARMED	ST/ ARM	ASSAULT	VIOLENT	BURGLARY--	RESID	NRESID	TOTAL	\$400+	<\$400	TOTAL	THEFT	CRM TL	IDX TL	CRIME	CAR	
Agency = OCEANSIDE																					
AIRPORT	0	5	2	1	1	15	22	2	6	8	23	29	52	10	70	92	23				
EASTSIDE/CAPISTRANO	2	6	3	5	8	32	53	16	10	26	51	50	101	23	150	203	60				
FIRE MOUNTAIN	0	5	5	6	6	31	48	7	32	39	122	191	313	28	380	428	115				
GUAJOME	0	5	5	4	2	26	37	16	4	20	66	69	135	8	163	200	60				
IVY RAN/RAN DEL ORO	1	7	4	6	4	44	62	26	24	50	150	150	300	49	399	461	191				
LAKE	0	0	0	7	15	25	47	5	11	16	61	87	148	16	180	227	41				
MIRA COSTA	0	3	3	1	0	22	26	10	13	23	59	80	139	33	195	221	91				
MISSN MESA/LOMA ALTA	1	5	1	8	17	51	82	21	12	33	80	128	208	49	290	372	108				
MORRO HILLS	0	0	0	0	0	7	7	6	2	8	17	7	24	6	38	45	17				
NORTH VALLEY	1	6	6	4	0	34	45	10	1	11	44	45	89	23	123	168	45				
OCEAN HILLS	0	0	0	0	1	10	11	3	0	3	30	29	59	13	75	86	38				
OCEANA	0	0	0	1	3	8	12	4	1	5	11	18	29	7	41	53	13				
SAN LUIS REY	0	19	14	7	9	66	101	35	21	56	98	134	232	40	328	429	110				
SOUTH OCEANSIDE	0	6	4	0	6	23	35	20	23	43	75	81	156	25	224	259	78				
TOWNSITE	1	20	17	11	27	128	187	29	35	64	229	237	486	88	618	805	202				
TRI CITY	0	6	4	4	5	30	45	8	7	15	54	57	111	18	144	189	48				
UNKNOWN	0	1	1	0	0	1	2	0	-1	-1	4	2	6	0	5	7	3				
SUB-TOTAL	6	94	69	65	104	553	822	218	201	419	1,174	1,394	2,568	436	3,423	4,245	1,243				
GRAND TOTALS	6	94	69	65	104	553	822	218	201	419	1,174	1,394	2,568	436	3,423	4,245	1,243				