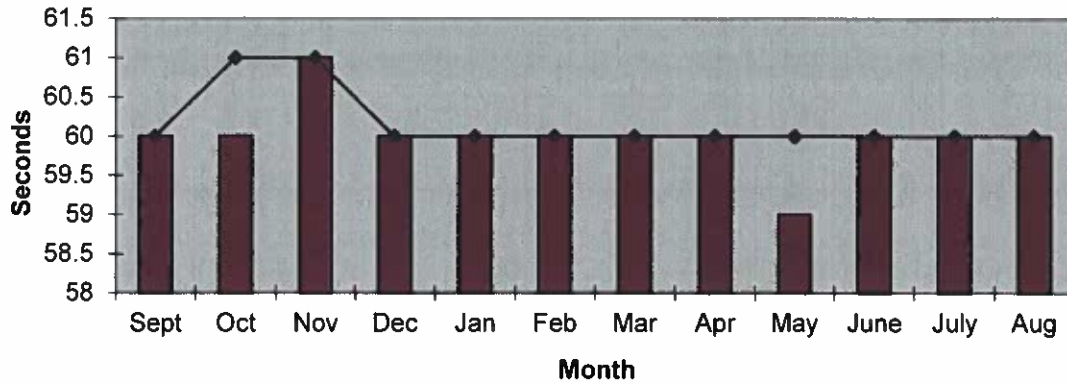
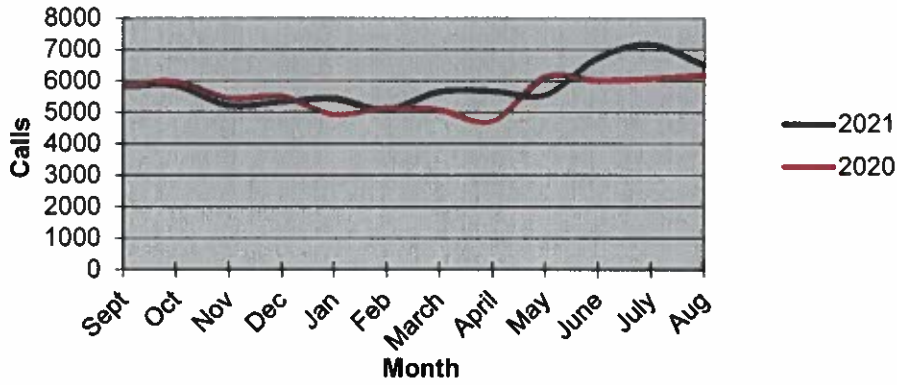


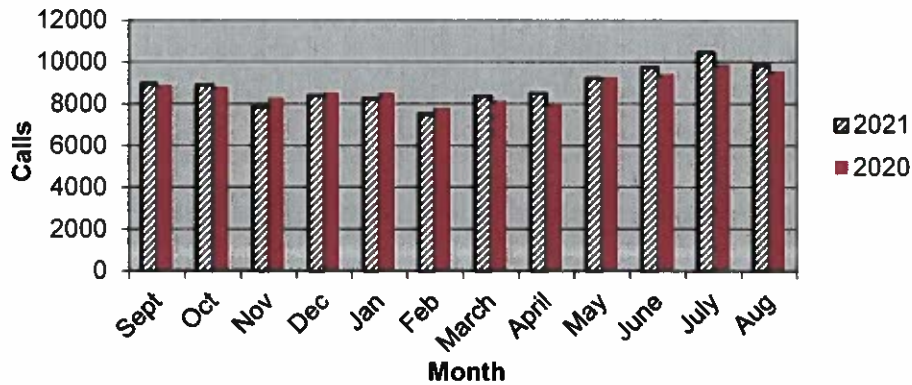
### Priority 1 Dispatch Times- Police



### 911 Calls



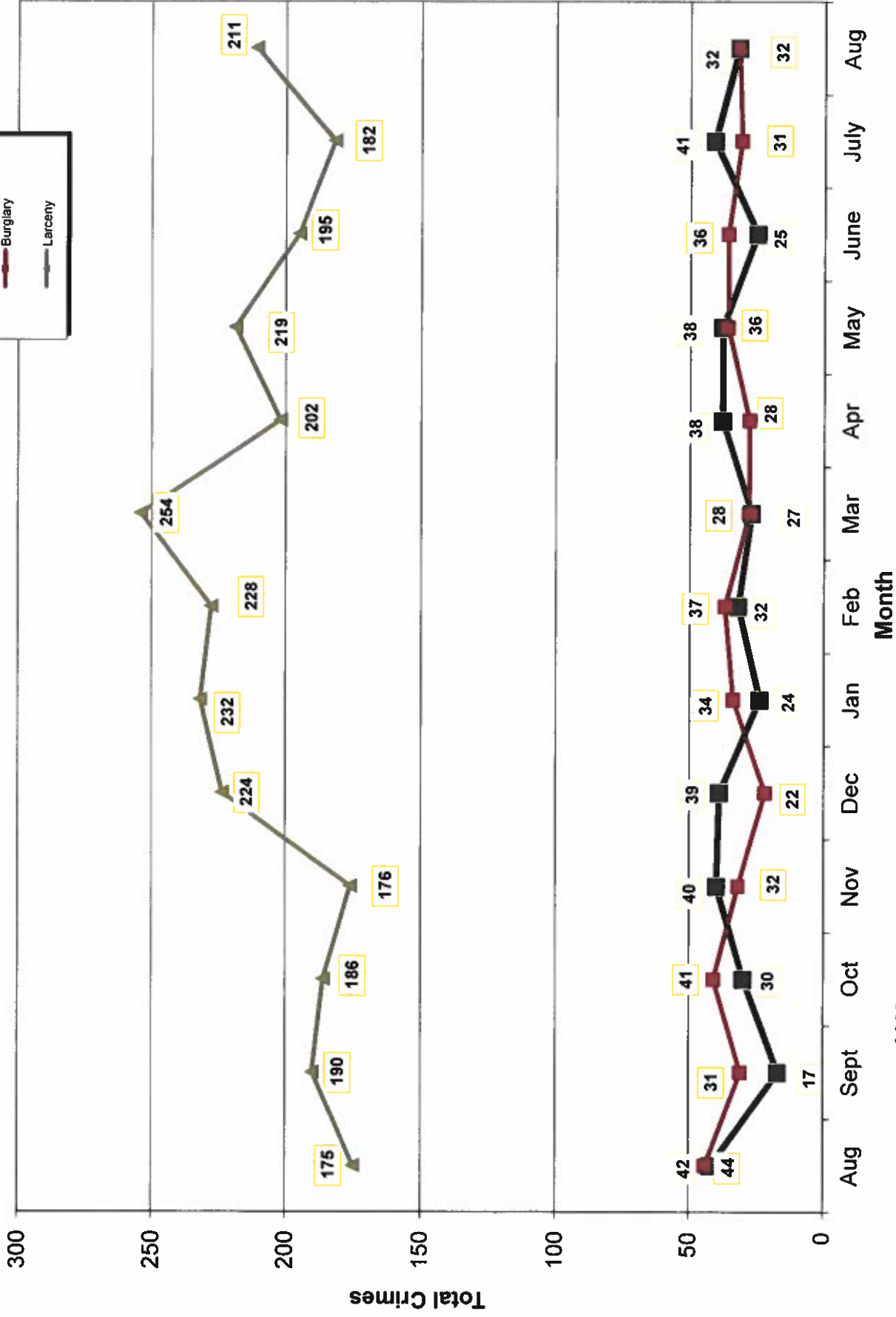
### Calls for Service



**OCEANSIDE POLICE DEPARTMENT  
FBI INDEX CRIMES**

	MONTHLY CASE ACTIVITY 2021												YEAR TO DATE COMPARISON			% CHANGE
	JAN	FEB	MAR	APR	MAY	JUN	JUL	AUG	SEP	OCT	NOV	DEC	2020	2021	CHANGE	
1. HOMICIDE	0	1	1	0	1	1	0	0	0				5	4	-1	-20.0%
	0	1	1	0	0	0	0	0					5	2	-3	-60.0%
2. RAPE	6	5	12	6	9	12	5	10					49	65	16	32.7%
	3	0	3	1	0	1	0	1					3	9	6	200.0%
3. ROBBERY	4	9	13	21	18	11	18	12					97	106	9	9.3%
	2	0	6	10	9	2	11	4					35	44	9	25.7%
4. AGGR. ASSAULT	38	31	49	44	42	47	47	64					325	362	37	11.4%
	18	12	24	19	17	26	24	34					146	174	28	19.2%
5. BURGLARY	34	37	28	28	36	36	31	32					299	262	-37	-12.4%
	3	1	5	3	5	1	4	5					42	27	-15	-35.7%
6. LARCENY THEFT	232	228	254	202	219	195	182	211					1560	1723	163	10.4%
	11	8	17	10	13	12	8	17					113	96	-17	-15.0%
7. AUTO THEFT	24	32	27	38	38	25	41	32					277	257	-20	-7.2%
	0	3	1	3	4	3	2	2					17	18	1	5.9%
TOTAL INDEX CRIMES	338	343	384	339	363	327	324	361					2612	2779	167	6.4%
	37	25	57	46	48	45	49	63					361	370	9	2.5%
TOTAL PERSON CRIMES	48	46	75	71	70	71	70	86					476	537	61	12.8%
	23	13	34	30	26	29	35	39					189	229	40	21.2%
TOTAL PROPERTY CRIMES	290	297	309	268	293	256	254	275					2136	2242	106	5.0%
	14	12	23	16	22	16	14	24					172	141	-31	-18.0%
ARSON	2	1	3	4	3	4	3	3					36	23	-13	-36.1%
Y-T-D Loss \$114,307	2	0	2	1	2	4	1	1					18	13	-5	-27.8%

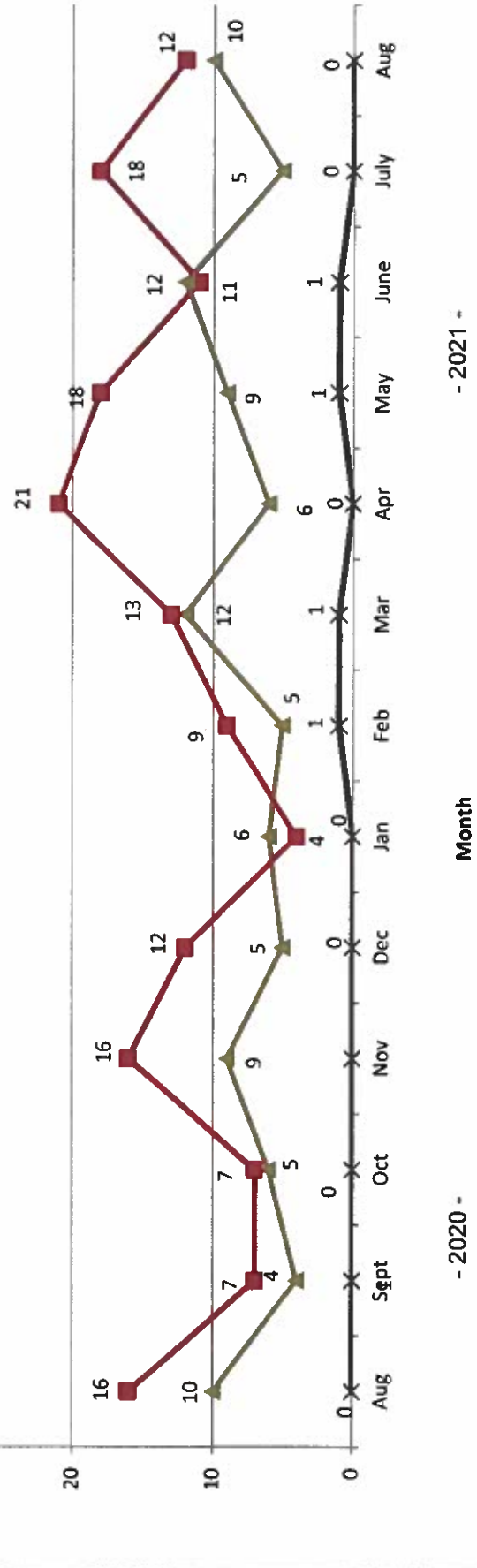
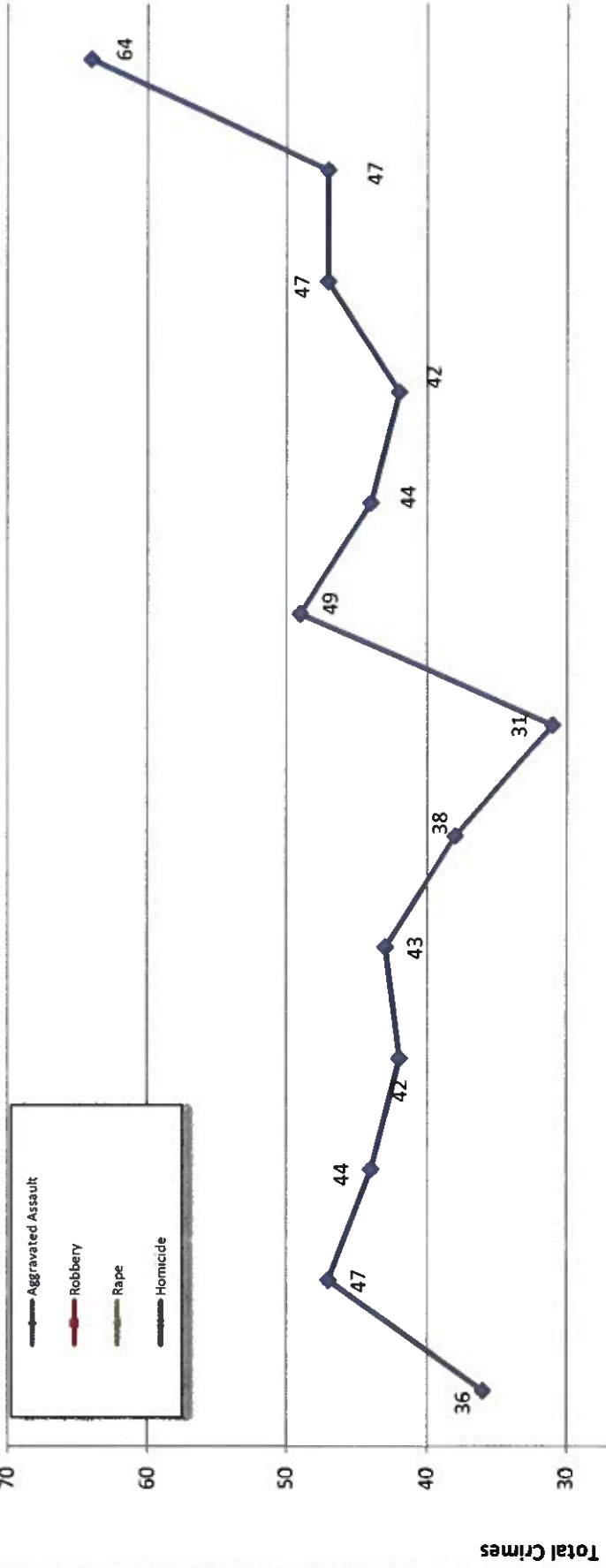
# Part 1 Crimes by Month (Property Crimes) 2021



- 2021 -

- 2020 -

# Part 1 Crimes by Month (Violent Crimes) 2021

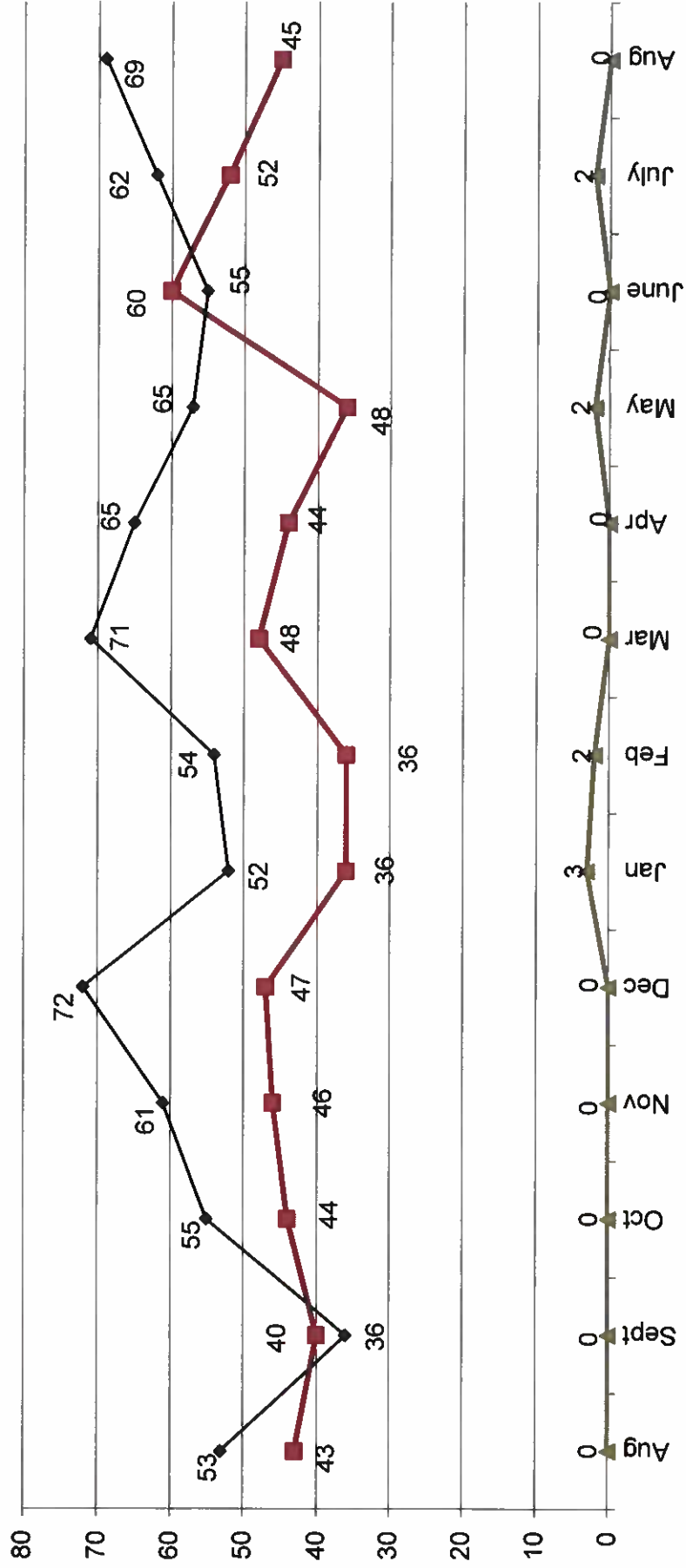
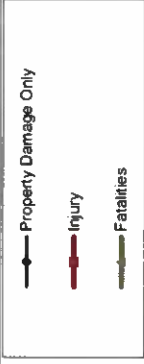


- 2021 -

Month

- 2020 -

### Traffic Collisions 2020 - 2021



-2020-

-2021-



UCR Crimes by GeoArea

Required Parameters  
Reporting Period: Aug 2021  
Agency: OCEANSIDE

Optional Parameters  
Geographical Area: All Beats  
Group by: Agency Select by: Neighborhood

Prior Report Number: S1STA120

Neighborhood	MURDER	RAPE (HISTORICAL)	RAPE (HISTORICAL)	ROBBERY--	ST/ ARM	AGGRVD	VIOLENT	BURGLARY	LARCENY-THEFT	M VEH	PROPERTY	CRIME	CAR
Agency = OCEANSIDE													
AIRPORT	0	0	0	0	0	1	1	0	0	4	2	6	7
EASTSIDE/CAPISTRANO	0	0	0	0	0	3	3	2	6	2	1	11	14
FIRE MOUNTAIN	0	0	0	2	0	5	7	0	12	17	3	35	42
GUAJOME	0	0	0	0	0	2	2	1	5	7	0	15	17
IVY RAN/RAN DEL ORO	0	0	0	2	0	4	6	3	10	15	1	30	36
LAKE	0	0	0	0	1	2	3	0	4	5	2	12	15
MIRA COSTA	0	3	3	0	0	4	7	0	6	12	3	23	30
MISSN MESALOMA ALTA	0	0	0	0	2	8	10	0	9	15	1	17	27
MORRO HILLS	0	0	0	0	0	0	0	1	0	1	0	2	2
NORTH VALLEY	0	0	0	0	0	2	2	0	3	4	1	8	10
OCEAN HILLS	0	0	0	0	0	0	0	0	1	2	0	3	3
OCEANA	0	0	0	1	0	1	2	0	0	0	-1	-1	1
SAN LUIS REY	0	2	3	0	0	10	12	1	8	11	6	26	38
SOUTH OCEANSIDE	0	1	1	0	1	2	4	5	6	0	5	18	22
TOWNSITE	0	4	4	1	2	17	24	1	28	22	6	60	84
TRI CITY	0	0	0	0	0	3	3	4	3	1	2	10	13
UNKNOWN	0	0	0	0	0	0	0	-1	1	0	0	0	0
SUB-TOTAL	0	10	11	4	8	64	86	19	99	112	32	275	361
GRAND TOTALS	0	10	11	4	8	64	86	19	99	112	32	275	361





# UCR Crimes by GeoArea

Required Parameters  
 Reporting Period: Jan 2021 to Aug 2021  
 Agency: OCEANSIDE

Optional Parameters  
 Geographical Area: All Beats  
 Group by: Agency Select by: Neighborhood

Prior Report Number: S1STA120

Neighborhood	MURDER	RAPE	RAPE (HISTORICAL)	ROBBERY--	ST/ ARM	ASSAULT	VIOLENT	--- BURGLARY----	--LARCENY--THEFT--	M.VEH	PROPERTY	CRIME	CAR				
				ARMED		CRM TL	RESID	NRESID	TOTAL	\$400+	<\$400	TOTAL	THEFT	CRM TL	IDX TL	PROWL	
<b>Agency = OCEANSIDE</b>																	
AIRPORT	0	3	1	0	1	6	10	1	5	6	17	21	38	6	50	60	14
EASTSIDE/CAPISTRANO	2	3	0	3	4	21	33	12	8	20	33	34	67	14	101	134	39
FIRE MOUNTAIN	0	3	3	3	5	23	34	3	20	23	67	119	186	11	220	254	62
GUAJOME	0	4	4	2	2	14	22	11	3	14	49	53	102	7	123	145	46
IVY RAN/RAN DEL ORO	1	5	3	1	3	30	40	17	18	35	95	96	191	21	247	287	129
LAKE	0	0	0	5	10	16	31	4	9	13	34	57	91	10	114	145	21
MIRA COSTA	0	3	3	0	0	14	17	5	8	13	36	52	88	21	122	139	58
MISSN MESA/LOMA ALTA	0	3	0	5	12	37	57	12	6	18	51	86	137	25	180	237	73
MORRO HILLS	0	0	0	0	0	2	2	2	0	2	10	4	14	4	20	22	9
NORTH VALLEY	0	3	4	3	0	16	22	6	0	6	27	30	57	15	78	100	29
OCEAN HILLS	0	0	0	0	0	6	6	3	0	3	24	21	45	11	59	65	31
OCEANA	0	0	0	1	2	6	9	3	1	4	6	9	15	4	23	32	6
SAN LUIS REY	0	17	11	1	3	42	63	23	11	34	61	96	157	19	210	273	65
SOUTH OCEANSIDE	0	4	2	1	5	17	27	12	8	20	52	59	111	19	150	177	61
TOWNSITE	1	15	13	8	18	94	136	17	24	41	169	172	341	60	442	578	155
TRI CITY	0	2	1	4	4	19	29	6	5	11	35	47	82	10	103	132	36
UNKNOWN	0	0	0	0	0	-1	-1	0	-1	-1	1	0	1	0	0	-1	1
<b>SUB-TOTAL</b>	<b>4</b>	<b>65</b>	<b>45</b>	<b>37</b>	<b>69</b>	<b>362</b>	<b>537</b>	<b>137</b>	<b>125</b>	<b>262</b>	<b>767</b>	<b>956</b>	<b>1,723</b>	<b>257</b>	<b>2,242</b>	<b>2,779</b>	<b>835</b>
<b>GRAND TOTALS</b>	<b>4</b>	<b>65</b>	<b>45</b>	<b>37</b>	<b>69</b>	<b>362</b>	<b>537</b>	<b>137</b>	<b>125</b>	<b>262</b>	<b>767</b>	<b>956</b>	<b>1,723</b>	<b>257</b>	<b>2,242</b>	<b>2,779</b>	<b>835</b>