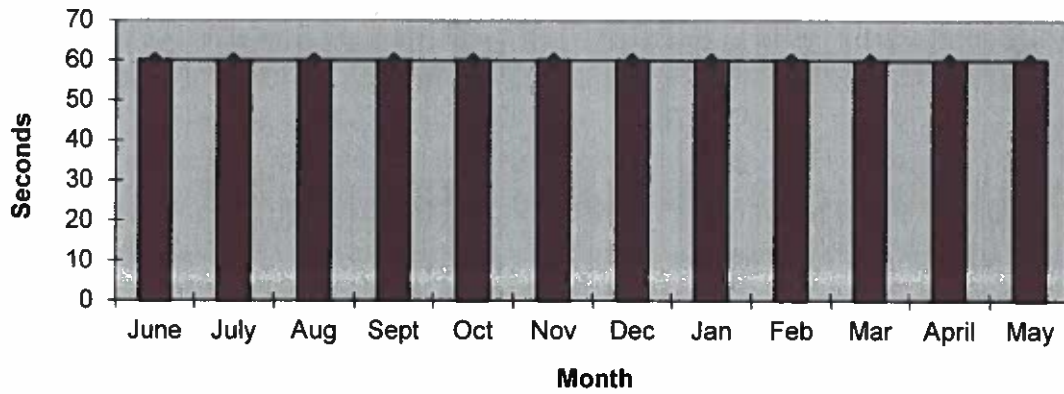
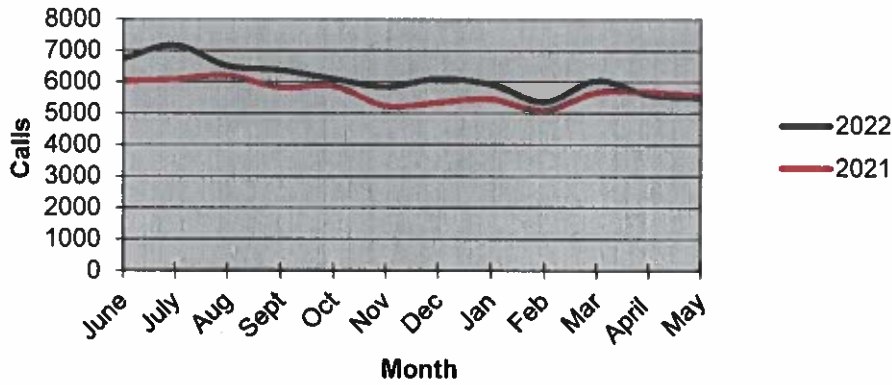


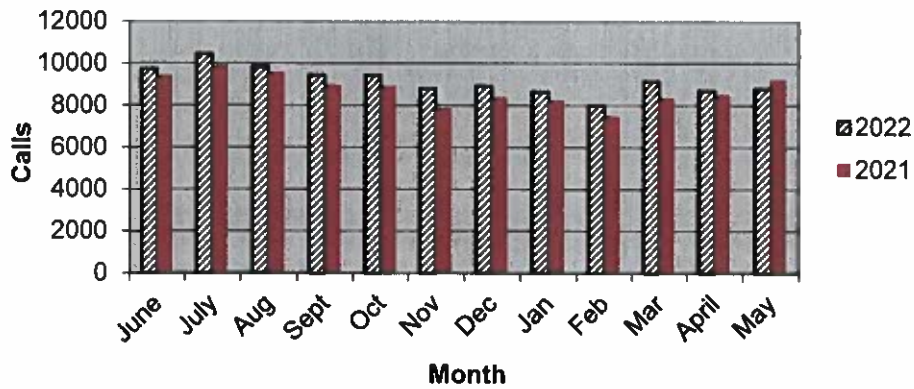
Priority 1 Dispatch Times- Police



911 Calls



Calls for Service

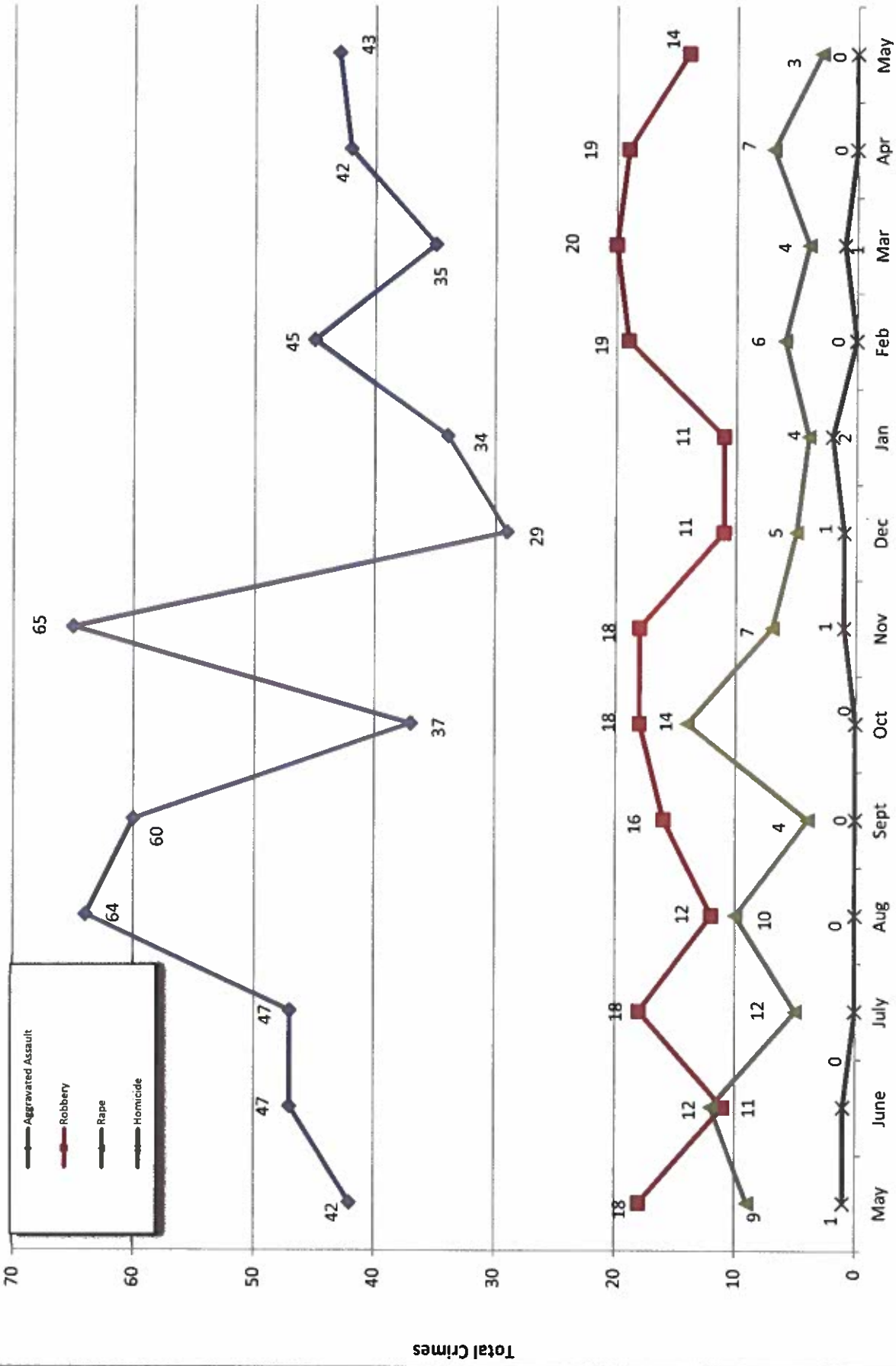


OCEANSIDE POLICE DEPARTMENT FBI INDEX CRIMES

MONTHLY CASE ACTIVITY 2022

	MONTHLY CASE ACTIVITY 2022												YEAR TO DATE COMPARISON		% CHANGE	
	JAN	FEB	MAR	APR	MAY	JUN	JUL	AUG	SEP	OCT	NOV	DEC	2021	2022 CHANGE		
1. HOMICIDE	2	0	1	0	0	0							3	3	0	0.0%
	0	0	1	0	0	0							2	1	-1	-50.0%
2. RAPE	4	6	4	7	3								38	24	-14	-36.8%
	1	1	2	1	0								7	5	-2	700.0%
3. ROBBERY	11	19	20	19	14								65	83	18	27.7%
	5	3	9	7	2								27	26	-1	-3.7%
4. AGGR. ASSAULT	34	45	35	42	43								204	199	-5	-2.5%
	10	23	10	18	15								90	76	-14	-15.6%
5. BURGLARY	50	32	36	35	45								163	198	35	21.5%
	2	2	5	5	5								17	19	2	11.8%
6. LARCENY THEFT	213	202	235	194	204								1135	1048	-87	-7.7%
	10	1	11	10	6								59	38	-21	-35.6%
7. AUTO THEFT	44	42	41	42	36								159	205	46	28.9%
	2	4	3	3	1								11	13	2	18.2%
TOTAL INDEX CRIMES	358	346	372	339	345								1767	1760	-7	-0.4%
	30	34	41	44	24								197	173	-24	-12.2%
TOTAL PERSON CRIMES	51	70	60	68	60								310	309	-1	-0.3%
	16	27	22	26	17								126	108	-18	-14.3%
TOTAL PROPERTY CRIMES	307	276	312	271	285								1457	1451	-6	-0.4%
	14	7	19	18	7								87	65	-22	-25.3%
ARSON	9	5	4	4	5								13	27	14	107.7%
Y-T-D Loss \$47,033	4	2	1	1	3								7	11	4	57.1%

Part 1 Crimes by Month (Violent Crimes) 2022

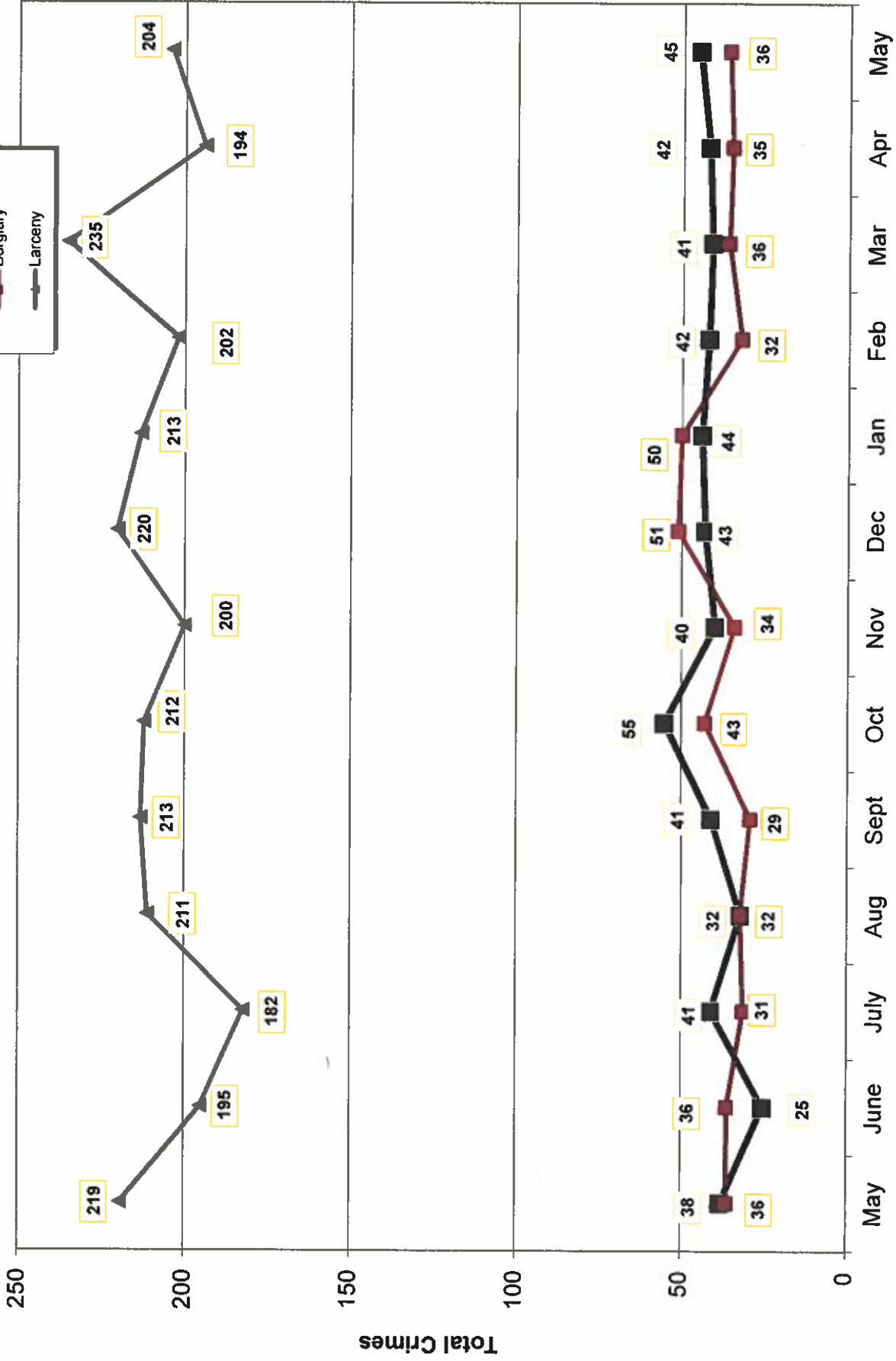
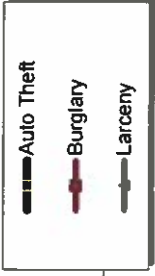


- 2021 -

Month

- 2022 -

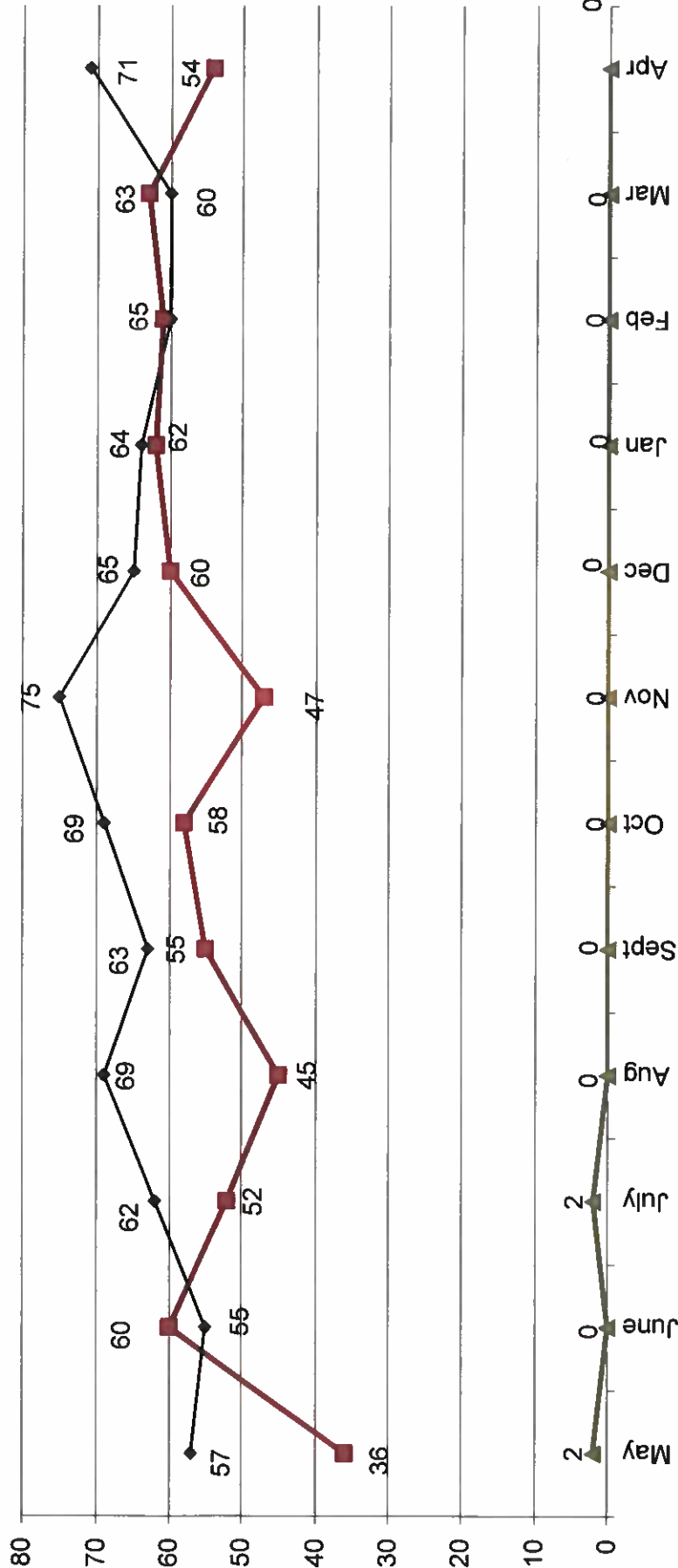
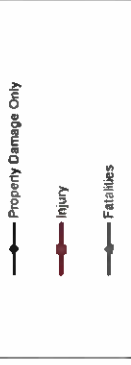
Part 1 Crimes by Month (Property Crimes) 2022



- 2021 -

- 2022 -

Traffic Collisions 2021 - 2022



-2021-

-2022-



UCR Crimes by GeoArea

Required Parameters
 Reporting Period: May 2022
 Agency: OCEANSIDE

Optional Parameters
 Geographical Area: All Beats
 Group by: Agency Select by: Neighborhood

Prior Report Number: S1STA120

Neighborhood	MURDER	RAPE	RAPE (HISTORICAL)	ROBBERY--	ST/ ARM	ASSAULT	AGSRVD	VIOLENT	BURGLARY----	NRESID	TOTAL	\$400+	--LARCENY--THEFT--	TOTAL	THEFT	M.VEH	PROPERTY	CRIME	CAR	PROWL
Agency = OCEANSIDE																				
AIRPORT	0	0	0	0	1	1	1	2	0	0	0	2	3	5	0	0	5	7	4	
EASTSIDE/CAPISTRANO	0	0	0	0	0	5	5	5	1	0	1	6	6	12	2	15	15	20	9	
FIRE MOUNTAIN	0	0	0	1	0	6	6	7	0	4	4	7	8	15	0	19	19	26	8	
GUAJOME	0	0	0	0	0	7	7	7	2	2	4	4	3	7	0	11	11	18	3	
IVY RAMIRAN DEL ORO	0	0	1	1	1	2	4	4	5	2	7	12	18	30	5	42	42	46	18	
LAKE	0	0	0	1	1	0	2	2	3	3	6	9	8	17	5	28	28	30	12	
MIRA COSTA	0	1	1	0	0	0	1	1	4	4	5	6	9	15	2	22	22	23	10	
MISSN MESALOMA ALTA	0	0	0	1	2	1	4	4	0	3	3	5	13	18	0	21	21	25	11	
MORRO HILLS	0	0	0	0	0	0	0	0	1	1	1	2	0	2	1	4	4	4	1	
NORTH VALLEY	0	0	0	0	0	3	3	3	0	0	0	3	3	6	4	10	10	13	3	
OCEAN HILLS	0	0	0	1	1	1	3	3	0	0	0	1	1	2	2	4	4	7	2	
OCEANA	0	0	0	0	0	2	2	2	2	0	2	0	0	0	1	3	3	5	0	
SAN LUIS REY	0	0	0	0	0	10	10	10	1	1	2	8	8	16	4	22	22	32	7	
SOUTH OCEANSIDE	0	0	0	1	0	2	3	3	1	0	1	8	5	13	3	17	17	20	3	
TOWNSITE	0	1	1	1	1	3	6	6	5	2	7	23	14	37	6	50	50	56	11	
TRI CITY	0	1	1	0	0	0	1	1	0	2	2	5	3	8	1	11	11	12	7	
UNKNOWN	0	0	0	0	0	0	0	0	0	0	0	1	0	1	0	1	1	1	0	
SUB-TOTAL	0	3	2	7	7	43	60	60	21	24	45	102	102	204	36	285	285	345	109	
GRAND TOTALS	0	3	2	7	7	43	60	60	21	24	45	102	102	204	36	285	285	345	109	



UCR Crimes by GeoArea

Required Parameters
 Reporting Period: Jan 2022 to May 2022
 Agency: OCEANSIDE

Optional Parameters
 Geographical Area: All Beats
 Group by: Agency Select by: Neighborhood

Prior Report Number: S1STA120

Neighborhood	MURDER	RAPE (HISTORICAL)	RAPE	ROBBERY--	ST/ ARM	ASSAULT	VIOLENT	RESID	NRESID	TOTAL	\$400+	<\$400	TOTAL	THEFT	PROPERTY	CRIME	CAR	
				ARMED	ARM			CRM TL							CRM TL	IDX TL	PROWL	
Agency = OCEANSIDE																		
AIRPORT	0	0	0	1	1	1	7	9	0	1	1	9	11	20	2	23	32	14
EASTSIDE/CAPISTRANO	0	1	1	1	1	18	18	21	4	1	5	22	22	44	8	57	78	24
FIRE MOUNTAIN	0	0	0	4	2	11	11	17	3	10	13	58	64	122	10	145	162	44
GUAJOME	0	2	2	2	1	10	10	15	5	3	8	27	31	58	8	74	89	30
IVY RANIRAN DEL ORO	0	1	0	2	2	17	17	22	18	11	29	88	64	152	28	209	231	89
LAKE	0	0	0	4	3	4	4	11	9	19	28	29	32	61	14	103	114	26
MIRA COSTA	0	1	1	0	0	6	6	7	5	10	15	29	38	67	13	95	102	47
MISSN MESALOMA ALTA	2	3	3	8	8	17	17	38	4	11	15	36	66	102	14	131	169	55
MORRO HILLS	0	0	0	0	1	7	7	8	4	2	6	4	4	8	3	17	25	6
NORTH VALLEY	0	2	1	0	-1	21	21	22	2	4	6	16	34	50	12	68	90	22
OCEAN HILLS	0	1	1	1	2	3	3	7	1	0	1	8	7	15	4	20	27	9
OCEANA	0	0	0	0	0	3	3	3	2	0	2	5	10	15	7	24	27	9
SAN LUIS REY	0	6	6	4	5	30	30	45	10	4	14	48	48	96	21	131	176	56
SOUTH OCEANSIDE	0	0	0	3	1	11	11	15	9	3	12	29	17	46	18	76	91	17
TOWNSITE	0	6	6	7	14	29	29	56	21	17	38	81	72	153	30	221	277	52
TRI CITY	1	1	1	3	3	6	6	14	2	4	6	19	13	32	13	51	65	20
UNKNOWN	0	0	0	0	0	-1	-1	-1	-1	0	-1	4	3	7	0	6	5	2
SUB-TOTAL	3	24	22	40	43	199	199	309	98	100	198	512	536	1,048	205	1,451	1,760	522
GRAND TOTALS	3	24	22	40	43	199	199	309	98	100	198	512	536	1,048	205	1,451	1,760	522