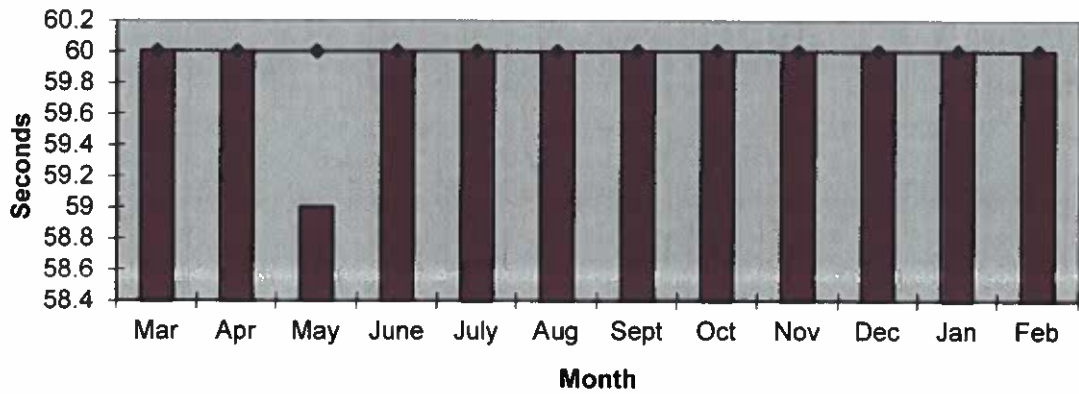
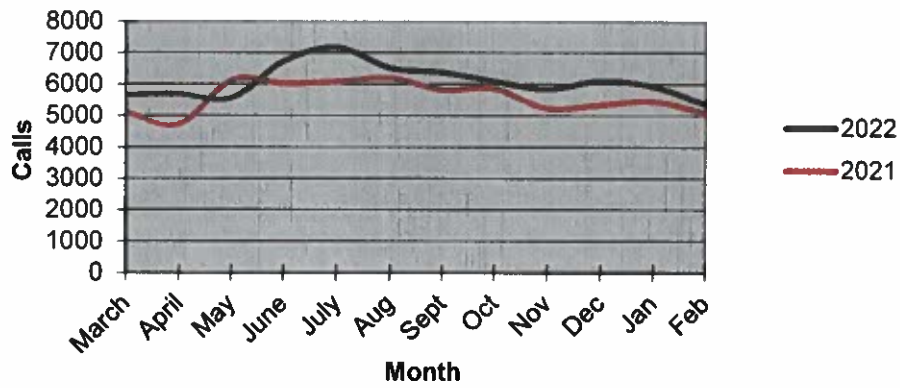


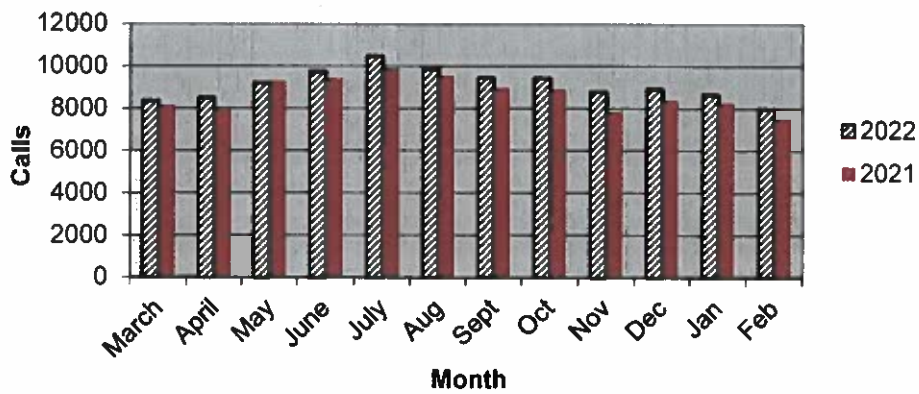
### Priority 1 Dispatch Times- Police



### 911 Calls



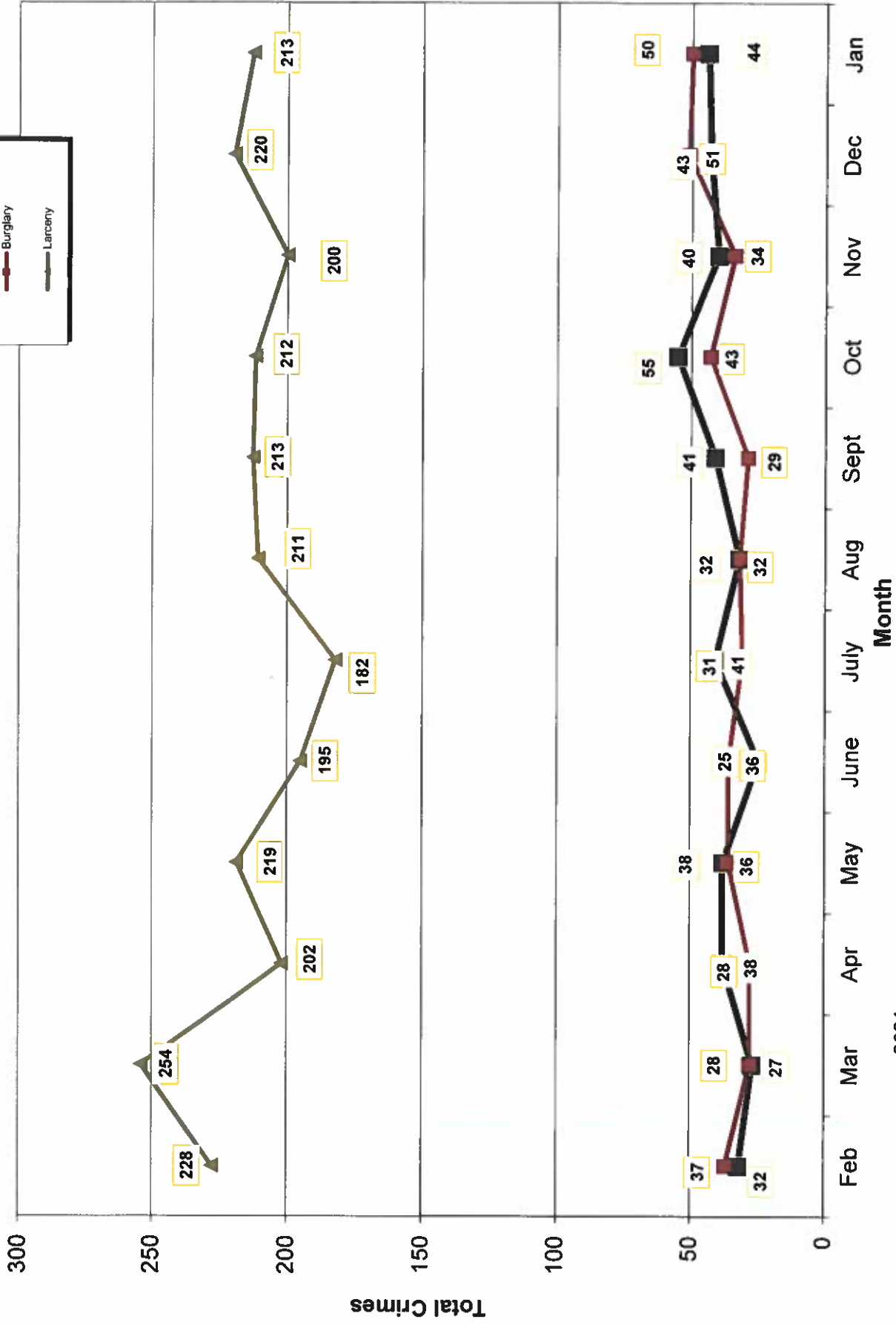
### Calls for Service



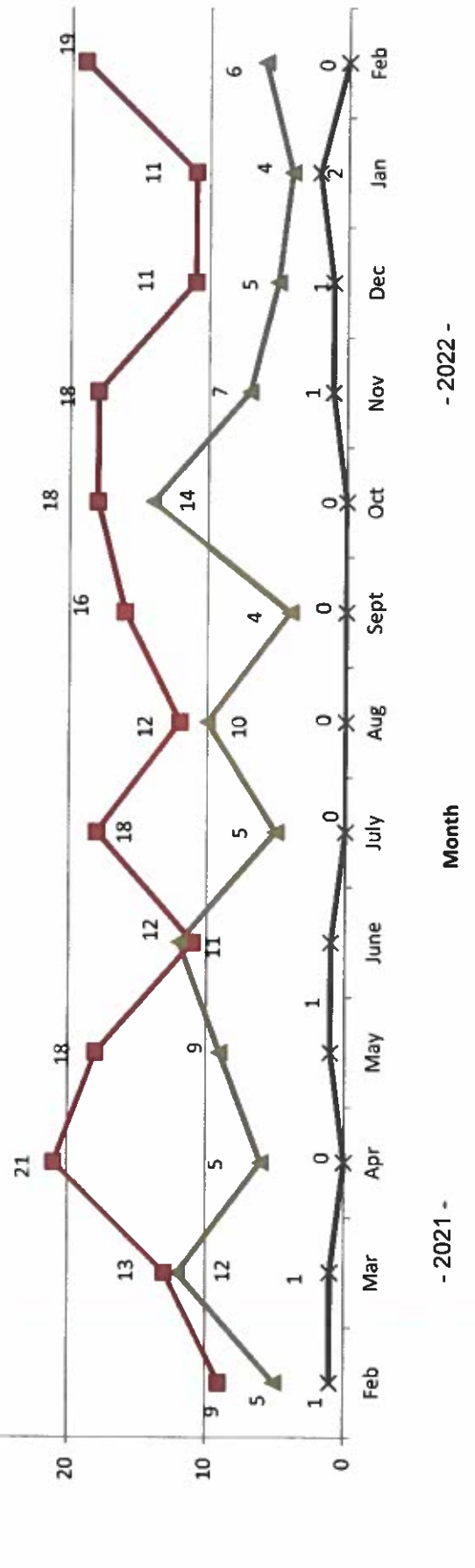
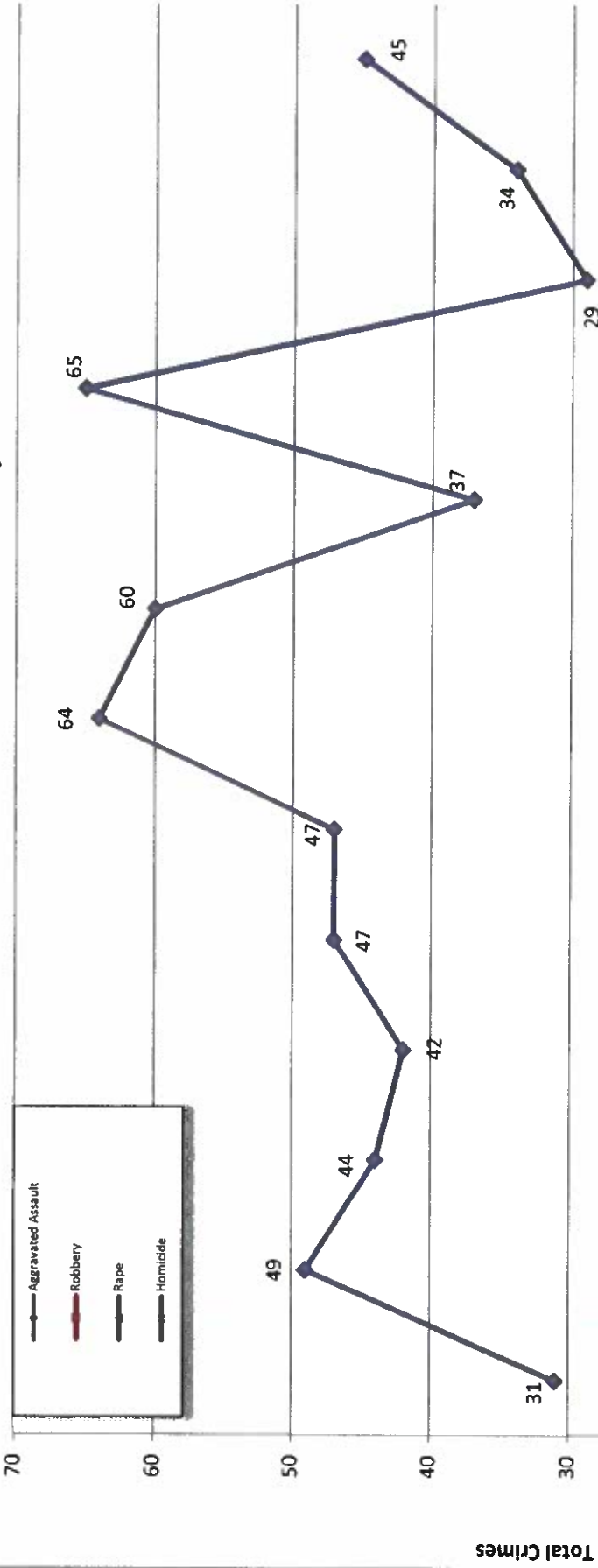
**OCEANSIDE POLICE DEPARTMENT  
FBI INDEX CRIMES**

		MONTHLY CASE ACTIVITY 2022												YEAR TO DATE		% CHANGE		
														COMPARISON				
		JAN	FEB	MAR	APR	MAY	JUN	JUL	AUG	SEP	OCT	NOV	DEC	2021	2022		CHANGE	
1. HOMICIDE	Actual	2	0												1	2	1	100.0%
	Cleared	0	0												1	0	-1	-100.0%
2. RAPE	Actual	4	6												11	10	-1	-9.1%
	Cleared	1	1												3	2	-1	0.0%
3. ROBBERY	Actual	11	19												13	30	17	130.8%
	Cleared	5	3												2	8	6	300.0%
4. AGGR. ASSAULT	Actual	34	45												69	79	10	14.5%
	Cleared	10	23												30	33	3	10.0%
5. BURGLARY	Actual	50	32												71	82	11	15.5%
	Cleared	2	2												4	4	0	0.0%
6. LARCENY THEFT	Actual	213	202												460	415	-45	-9.8%
	Cleared	10	1												19	11	-8	-42.1%
7. AUTO THEFT	Actual	44	42												56	86	30	53.6%
	Cleared	2	4												3	6	3	100.0%
TOTAL INDEX CRIMES	Actual	358	346												681	704	23	3.4%
	Cleared	30	34												62	64	2	3.2%
TOTAL PERSON CRIMES	Actual	51	70												94	121	27	28.7%
	Cleared	16	27												36	43	7	19.4%
TOTAL PROPERTY CRIMES	Actual	307	276												587	583	-4	-0.7%
	Cleared	14	7												26	21	-5	-19.2%
ARSON	Actual	9	5												3	14	11	366.7%
Y-T-D Loss \$24,029.00	Cleared	4	2												2	6	4	200.0%

# Part 1 Crimes by Month (Property Crimes) 2022



# Part 1 Crimes by Month (Violent Crimes) 2022

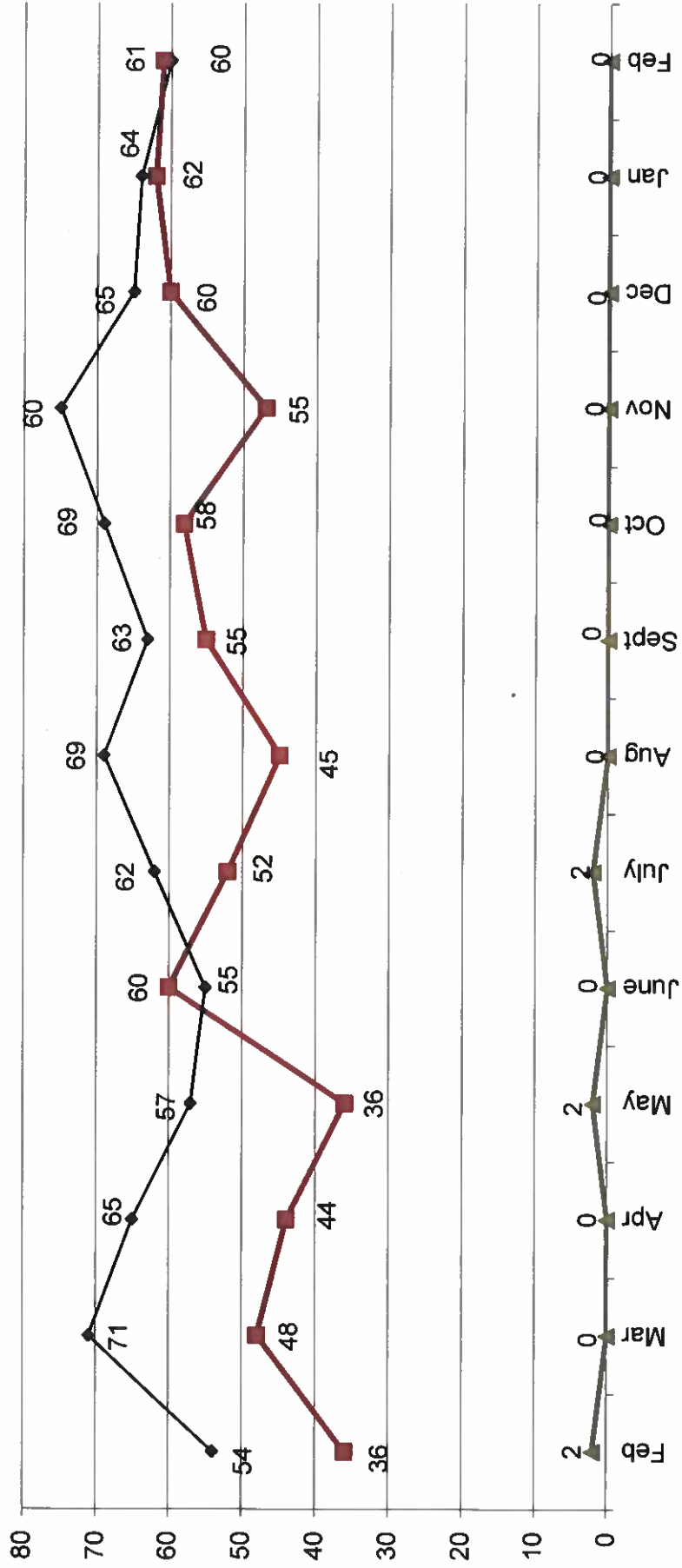
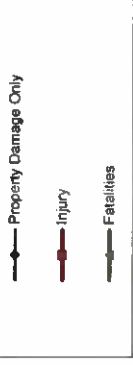


- 2022 -

Month

- 2021 -

### Traffic Collisions 2021 - 2022



-2021-

-2022-



# UCR Crimes by GeoArea

**Required Parameters**  
 Reporting Period: Feb 2022  
 Agency: OCEANSIDE

**Optional Parameters**  
 Geographical Area: All Beats  
 Group by: Agency **Select by: Neighborhood**

Prior Report Number: S1STA120

Neighborhood	MURDER	RAPE	RAPE (HISTORICAL)	ROBBERY--	AGGRVD	VIOLENT	RESID	NRESID	TOTAL	\$400+	<\$400	TOTAL	THEFT	CRM TL	IDX TL	CRIME	CAR	
				ARMED	ASSAULT	CRM TL												
			ST/ ARM															
Agency = OCEANSIDE																		
AIRPORT	0	0	0	0	0	0	0	0	0	1	3	4	1	5	5	4		
EASTSIDE/CAPISTRANO	0	0	0	1	0	3	1	0	1	2	3	5	2	8	11	2		
FIRE MOUNTAIN	0	0	0	0	2	3	0	0	0	12	18	30	1	31	34	12		
GUALOME	0	1	1	0	2	4	0	0	0	5	2	7	1	8	12	5		
IVY RAN/RAN DEL ORO	0	0	0	1	5	6	3	3	6	19	10	29	4	39	45	17		
LAKE	0	0	0	2	0	2	0	5	5	6	7	13	0	18	20	4		
MIRA COSTA	0	0	0	0	1	1	1	1	2	9	8	17	4	23	24	14		
MISSN MESA/LOMA ALTA	0	2	2	0	5	9	1	2	3	3	22	25	3	31	40	11		
MORRO HILLS	0	0	0	0	4	4	2	0	2	0	0	0	0	2	6	0		
NORTH VALLEY	0	0	0	0	7	7	0	1	1	3	6	9	3	13	20	5		
OCEAN HILLS	0	0	0	0	0	0	0	0	0	3	0	3	0	3	3	2		
OCEANA	0	0	0	0	0	0	0	0	0	1	3	4	0	4	4	3		
SAN LUIS REY	0	1	1	2	8	12	1	0	1	13	9	22	3	26	38	15		
SOUTH OCEANSIDE	0	0	0	1	1	2	3	0	3	6	2	8	6	17	19	2		
TOWNSITE	0	1	1	2	7	12	2	5	7	15	7	22	9	38	50	5		
TRI CITY	0	0	0	1	1	4	0	1	1	1	1	2	5	8	12	2		
UNKNOWN	0	1	0	0	0	1	0	0	0	0	2	2	0	2	3	0		
<b>SUB-TOTAL</b>	<b>0</b>	<b>6</b>	<b>5</b>	<b>9</b>	<b>45</b>	<b>70</b>	<b>14</b>	<b>18</b>	<b>32</b>	<b>99</b>	<b>103</b>	<b>202</b>	<b>42</b>	<b>276</b>	<b>346</b>	<b>103</b>		
<b>GRAND TOTALS</b>	<b>0</b>	<b>6</b>	<b>5</b>	<b>9</b>	<b>45</b>	<b>70</b>	<b>14</b>	<b>18</b>	<b>32</b>	<b>99</b>	<b>103</b>	<b>202</b>	<b>42</b>	<b>276</b>	<b>346</b>	<b>103</b>		





# UCR Crimes by GeoArea

Required Parameters  
Reporting Period: Jan 2022 to Feb 2022  
Agency: OCEANSIDE

Optional Parameters  
Geographical Area: All Beats  
Group by: Agency Select by: Neighborhood

Prior Report Number: S1STA120

Neighborhood	MURDER	RAPE	RAPE (HISTORICAL)	ROBBERY--	AGGRVD	VIOLENT	RESID	NRESID	TOTAL	\$400+	<\$400	TOTAL	THEFT	CRM TL	IDX TL	CRIME	CAR
				ARMED	ST/ ARM	CRM TL	CRM TL	CRM TL	CRM TL	CRM TL	CRM TL	CRM TL	CRM TL	CRM TL	CRM TL	CRM TL	CRM TL
Agency = OCEANSIDE																	
AIRPORT	0	0	0	0	0	1	1	0	0	0	5	10	1	11	12	8	
EASTSIDE/CAPISTRANO	0	0	0	1	0	5	6	2	1	3	10	17	3	23	29	10	
FIRE MOUNTAIN	0	0	0	2	1	2	5	1	2	3	28	59	3	65	70	22	
GUAJOME	0	1	1	1	0	2	4	1	0	1	8	18	3	22	26	9	
IVY RANIRAN DEL ORO	0	1	1	0	1	6	8	10	7	17	27	46	9	72	80	23	
LAKE	0	0	0	3	0	0	3	1	6	7	11	23	4	34	37	6	
MIRA COSTA	0	0	0	0	0	1	1	3	5	8	12	25	7	40	41	18	
MISSN MESALOMA ALTA	1	4	4	2	2	9	18	3	4	7	10	39	8	64	82	22	
MORRO HILLS	0	0	0	0	0	4	4	2	0	2	0	1	2	5	9	1	
NORTH VALLEY	0	0	0	0	0	14	14	1	2	3	7	19	5	34	48	11	
OCEAN HILLS	0	1	1	0	0	0	1	0	0	0	4	6	0	6	7	3	
OCEANA	0	0	0	0	0	0	0	0	0	0	1	7	2	9	9	4	
SAN LUIS REY	0	0	0	1	3	12	16	4	1	5	21	40	7	52	68	25	
SOUTH OCEANSIDE	0	0	0	1	0	2	3	5	0	5	14	21	11	37	40	9	
TOWNSITE	0	2	2	3	4	18	27	9	10	19	33	57	13	89	116	22	
TRI CITY	1	0	0	2	3	3	9	1	1	2	3	6	8	16	25	2	
UNKNOWN	0	1	0	0	0	0	1	0	0	0	1	3	4	4	5	1	
<b>SUB-TOTAL</b>	<b>2</b>	<b>10</b>	<b>8</b>	<b>16</b>	<b>14</b>	<b>79</b>	<b>121</b>	<b>43</b>	<b>39</b>	<b>82</b>	<b>195</b>	<b>415</b>	<b>86</b>	<b>583</b>	<b>704</b>	<b>196</b>	
<b>GRAND TOTALS</b>	<b>2</b>	<b>10</b>	<b>9</b>	<b>16</b>	<b>14</b>	<b>79</b>	<b>121</b>	<b>43</b>	<b>39</b>	<b>82</b>	<b>195</b>	<b>415</b>	<b>86</b>	<b>583</b>	<b>704</b>	<b>196</b>	