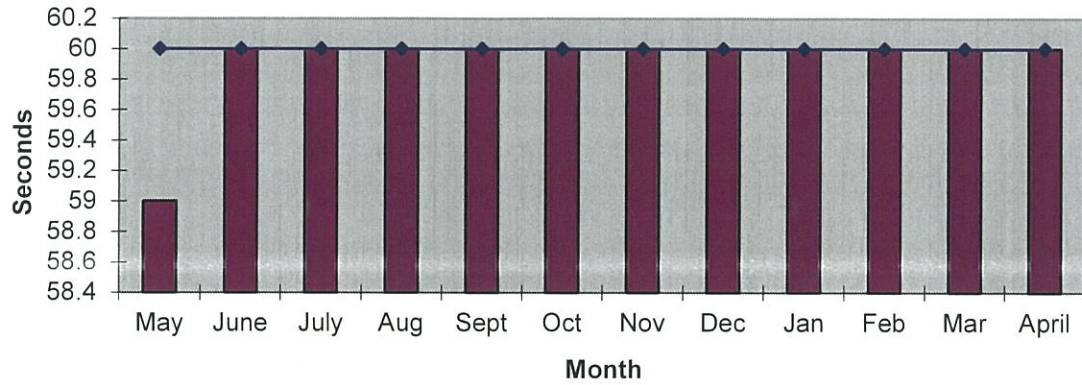
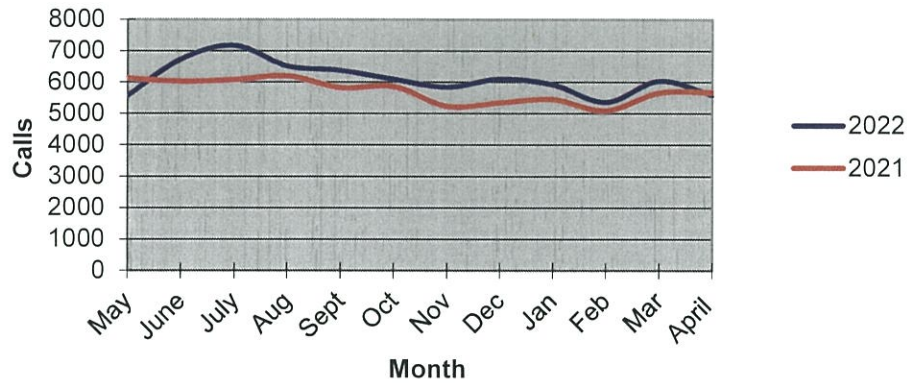


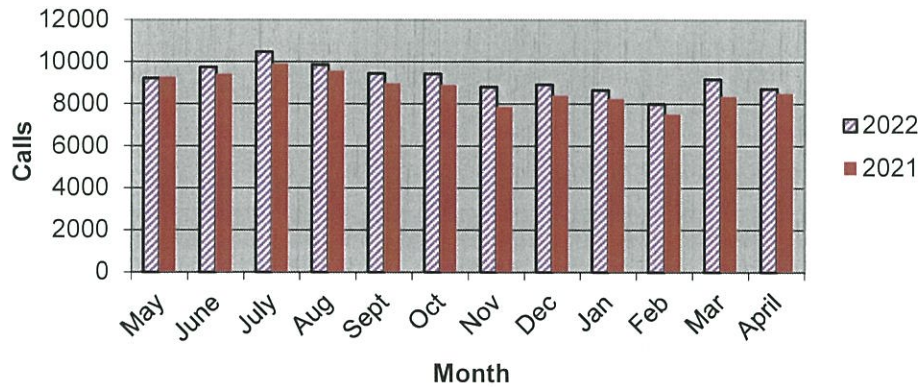
### Priority 1 Dispatch Times- Police



### 911 Calls



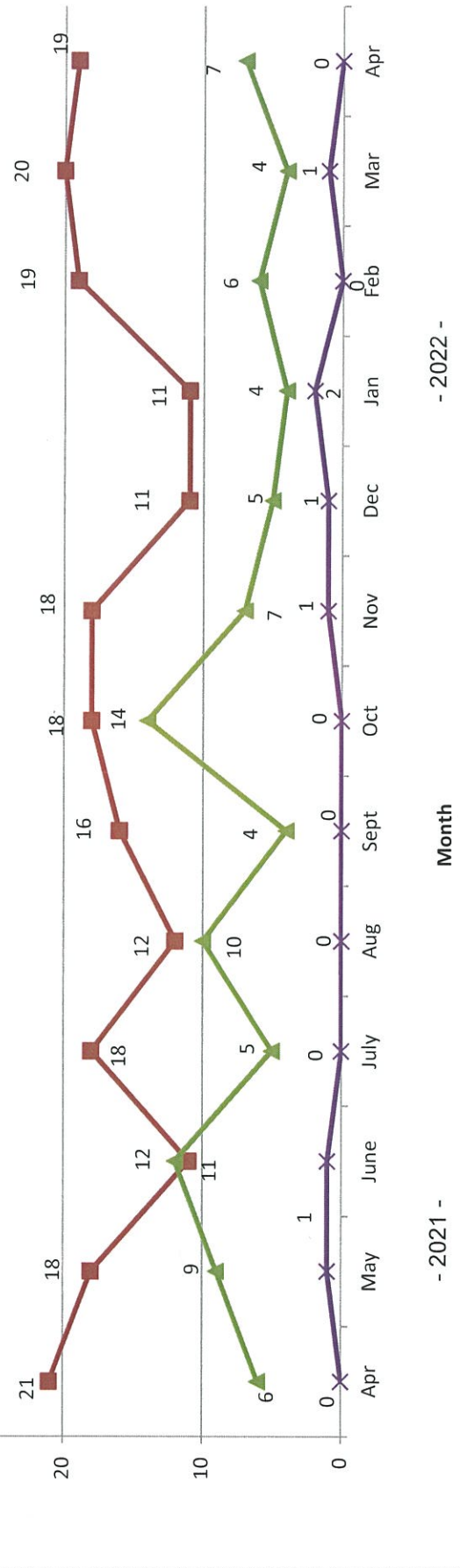
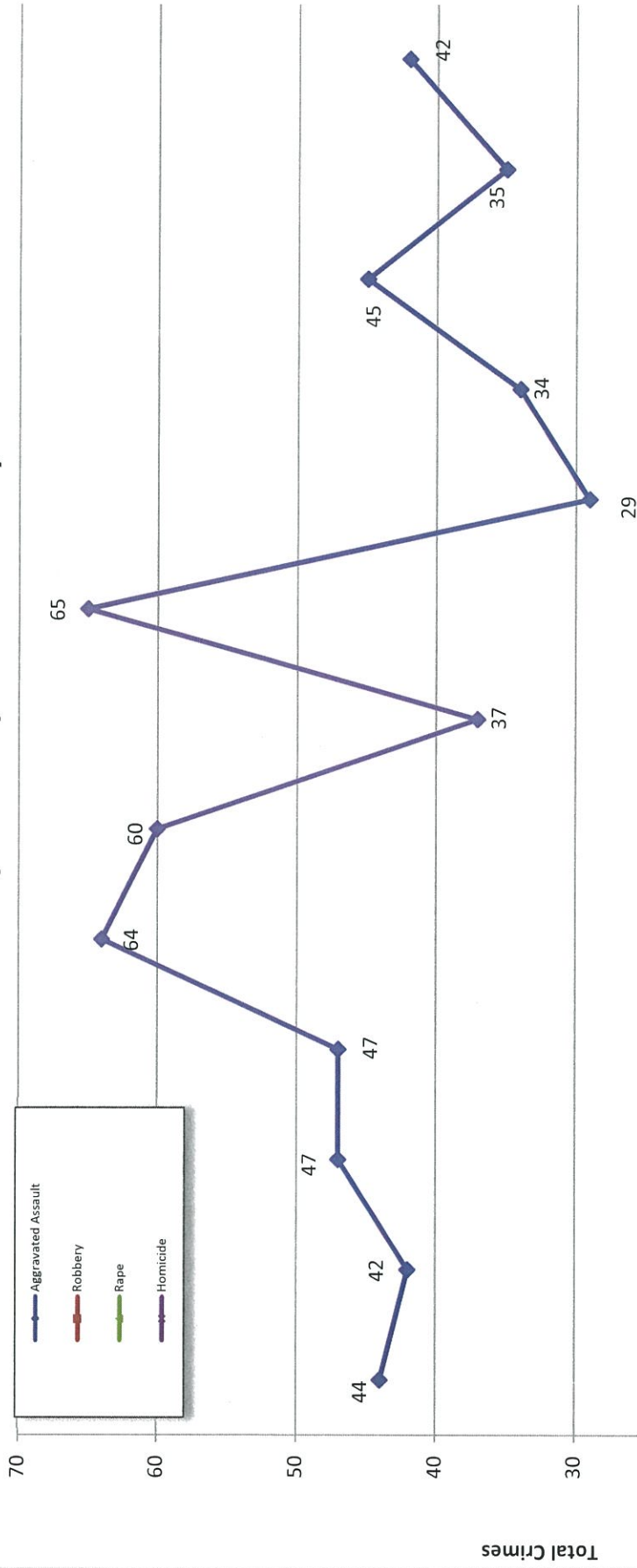
### Calls for Service



**OCEANSIDE POLICE DEPARTMENT  
FBI INDEX CRIMES**

		MONTHLY CASE ACTIVITY 2022												YEAR TO DATE		% CHANGE			
														COMPARISON					
		JAN	FEB	MAR	APR	MAY	JUN	JUL	AUG	SEP	OCT	NOV	DEC	2021	2022		CHANGE		
1. HOMICIDE	Actual Cleared	2	0	1	0	0										2	3	1	50.0%
		0	0	1	0											2	1	-1	-50.0%
2. RAPE	Actual Cleared	4	6	4	7											29	21	-8	-27.6%
		1	1	2	1											7	5	-2	700.0%
3. ROBBERY	Actual Cleared	11	19	20	19											47	69	22	46.8%
		5	3	9	7											18	24	6	33.3%
4. AGGR. ASSAULT	Actual Cleared	34	45	35	42											162	156	-6	-3.7%
		10	23	10	18											73	61	-12	-16.4%
5. BURGLARY	Actual Cleared	50	32	36	35											127	153	26	20.5%
		2	2	5	5											12	14	2	16.7%
6. LARCENY THEFT	Actual Cleared	213	202	235	194											916	844	-72	-7.9%
		10	1	11	10											46	32	-14	-30.4%
7. AUTO THEFT	Actual Cleared	44	42	41	42											121	169	48	39.7%
		2	4	3	3											7	12	5	71.4%
TOTAL INDEX CRIMES	Actual Cleared	358	346	372	339											1404	1415	11	0.8%
		30	34	41	44											149	149	0	0.0%
TOTAL PERSON CRIMES	Actual Cleared	51	70	60	68											240	249	9	3.8%
		16	27	22	26											100	91	-9	-9.0%
TOTAL PROPERTY CRIMES	Actual Cleared	307	276	312	271											1164	1166	2	0.2%
		14	7	19	18											65	58	-7	-10.8%
ARSON	Actual	9	5	4	4											10	22	12	120.0%
Y-T-D Loss \$42,932	Cleared	4	2	1	1											5	8	3	60.0%

# Part 1 Crimes by Month (Violent Crimes) 2022

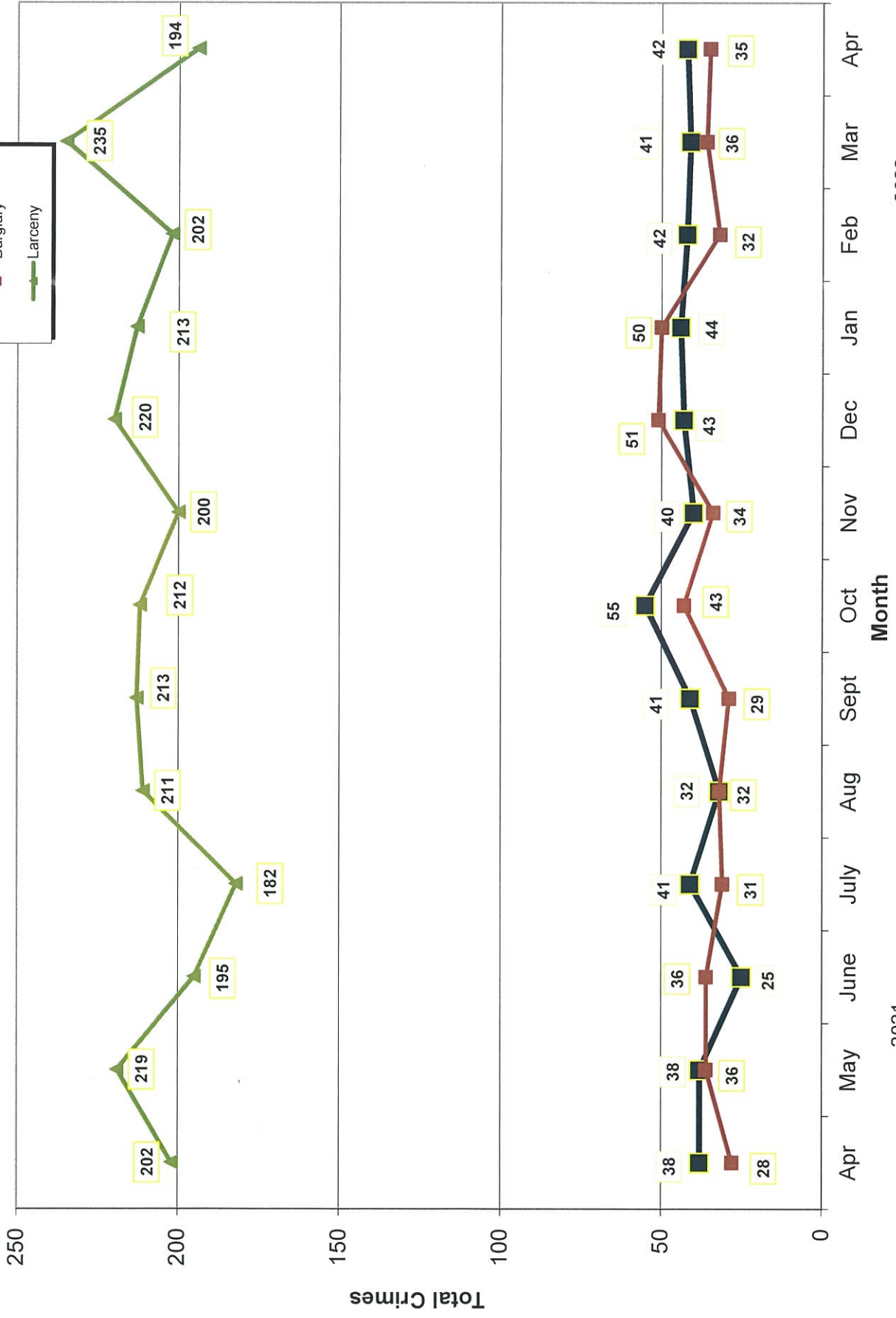


- 2022 -

Month

- 2021 -

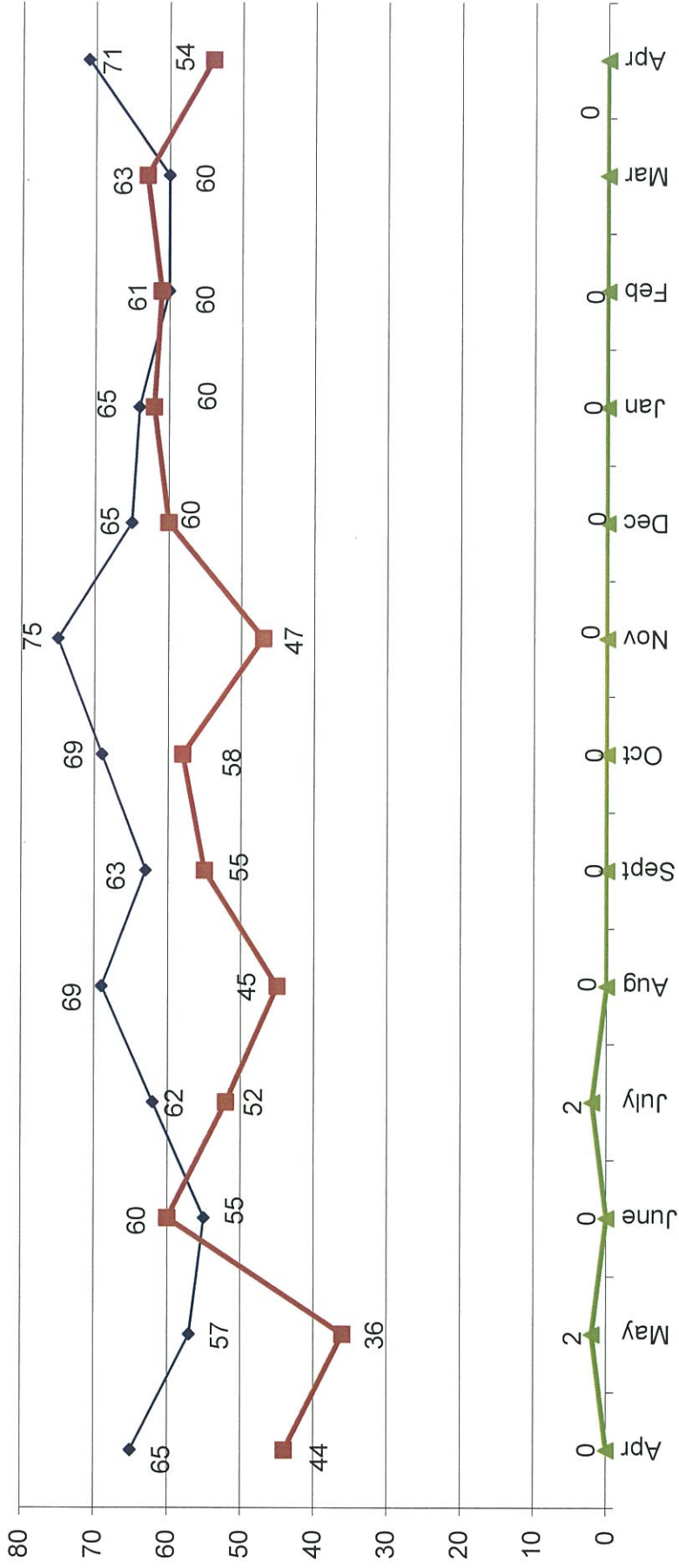
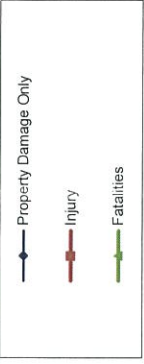
# Part 1 Crimes by Month (Property Crimes) 2022



- 2022 -

- 2021 -

### Traffic Collisions 2021 - 2022



-2021-

-2022-



# UCR Crimes by GeoArea

**Required Parameters**  
 Reporting Period: Apr 2022  
 Agency: OCEANSIDE

**Optional Parameters**  
 Geographical Area: All Beats  
 Group by: Agency **Select by: Neighborhood**

Prior Report Number: S1STA120

Neighborhood	MURDER	RAPE (HISTORICAL)	RAPE (HISTORICAL)	ROBBERY	AGGRVD	VIOLENT	BURGLARY	TOTAL	\$400+	<\$400	TOTAL	THEFT	CRM TL	PROPERTY	CRIME	CAR
<b>Agency = OCEANSIDE</b>																
AIRPORT	0	0	0	0	0	2	0	1	1	2	3	1	5	7	2	
EASTSIDE/CAPISTRANO	0	0	0	0	1	6	0	0	3	3	6	1	7	14	2	
FIRE MOUNTAIN	0	0	0	0	1	1	2	4	16	13	29	2	37	39	9	
GUAJOME	0	0	0	0	0	1	1	1	8	7	15	3	20	21	7	
IVY RAN/RAN DEL ORO	0	0	0	0	1	3	2	0	16	13	29	7	38	42	14	
LAKE	0	0	0	0	1	1	4	1	4	3	7	2	14	16	4	
MIRA COSTA	0	0	0	0	0	3	0	0	3	6	9	2	11	14	7	
MISSN MESA/LOMA ALTA	0	0	0	3	3	1	2	3	7	5	12	2	17	24	6	
MORRO HILLS	0	0	0	0	0	2	0	0	1	2	3	0	3	5	2	
NORTH VALLEY	0	0	0	0	0	3	0	2	4	6	10	1	13	16	5	
OCEAN HILLS	0	0	0	0	0	0	0	0	2	1	3	1	4	4	2	
OCEANA	0	0	0	0	0	1	0	0	4	0	4	3	7	8	2	
SAN LUIS REY	0	5	2	2	6	15	3	1	9	16	25	7	36	51	16	
SOUTH OCEANSIDE	0	0	0	0	1	5	2	1	4	2	6	2	11	17	3	
TOWNSITE	0	2	2	0	3	7	5	2	9	14	23	5	35	47	9	
TRI CITY	0	0	0	1	0	0	1	0	5	3	8	3	12	13	3	
UNKNOWN	0	0	0	0	0	0	-1	0	2	0	2	0	1	1	1	
<b>SUB-TOTAL</b>	<b>0</b>	<b>7</b>	<b>7</b>	<b>6</b>	<b>13</b>	<b>42</b>	<b>20</b>	<b>15</b>	<b>98</b>	<b>96</b>	<b>194</b>	<b>42</b>	<b>271</b>	<b>339</b>	<b>94</b>	
<b>GRAND TOTALS</b>	<b>0</b>	<b>7</b>	<b>7</b>	<b>6</b>	<b>13</b>	<b>42</b>	<b>20</b>	<b>15</b>	<b>98</b>	<b>96</b>	<b>194</b>	<b>42</b>	<b>271</b>	<b>339</b>	<b>94</b>	



### UCR Crimes by GeoArea

**Required Parameters**  
 Reporting Period: Jan 2022 to Apr 2022  
 Agency: OCEANSIDE

**Optional Parameters**  
 Geographical Area: All Beats  
 Group by: Agency Select by: Neighborhood

Prior Report Number: S1STA120

Neighborhood	MURDER	RAPE (HISTORICAL)	RAPE	ROBBERY	AGGRVD	VIOLENT	RESID	NRESID	TOTAL	\$400+	<\$400	TOTAL	THEFT	CRM TL	IDX TL	CRIME	CAR
<b>Agency = OCEANSIDE</b>																	
AIRPORT	0	0	0	1	0	6	7	0	1	1	7	8	15	2	18	25	10
EASTSIDE/CAPISTRANO	0	1	1	1	13	13	16	3	1	4	16	16	32	6	42	58	15
FIRE MOUNTAIN	0	0	0	3	2	5	10	3	6	9	51	56	107	10	126	136	36
GUALOME	0	2	2	2	1	3	8	3	1	4	23	28	51	8	63	71	27
IVY RAN/RAN DEL ORO	0	1	1	1	15	15	18	13	9	22	76	46	122	23	167	185	71
LAKE	0	0	0	3	2	4	9	6	16	22	20	24	44	9	75	84	14
MIRA COSTA	0	0	0	0	6	6	6	4	6	10	23	29	52	11	73	79	37
MISSN MESALOMA ALTA	2	3	3	7	16	16	34	4	8	12	31	53	84	14	110	144	44
MORRO HILLS	0	0	0	0	1	7	8	4	1	5	2	4	6	2	13	21	5
NORTH VALLEY	0	2	1	0	-1	18	19	2	4	6	13	31	44	8	58	77	19
OCEAN HILLS	0	1	1	0	1	2	4	1	0	1	7	6	13	2	16	20	7
OCEANA	0	0	0	0	1	1	1	0	0	0	5	10	15	6	21	22	9
SAN LUIS REY	0	6	6	4	5	20	35	9	3	12	40	40	80	17	109	144	49
SOUTH OCEANSIDE	0	0	0	2	1	9	12	8	3	11	21	12	33	15	59	71	14
TOWNSITE	0	5	5	6	13	26	50	16	15	31	58	58	116	24	171	221	41
TRI CITY	1	0	0	3	3	6	13	2	2	4	14	10	24	12	40	53	13
UNKNOWN	0	0	0	0	0	-1	-1	-1	0	-1	3	3	6	0	5	4	2
<b>SUB-TOTAL</b>	<b>3</b>	<b>21</b>	<b>20</b>	<b>33</b>	<b>36</b>	<b>156</b>	<b>249</b>	<b>77</b>	<b>76</b>	<b>153</b>	<b>410</b>	<b>434</b>	<b>844</b>	<b>169</b>	<b>1,166</b>	<b>1,415</b>	<b>413</b>
<b>GRAND TOTALS</b>	<b>3</b>	<b>21</b>	<b>20</b>	<b>33</b>	<b>36</b>	<b>156</b>	<b>249</b>	<b>77</b>	<b>76</b>	<b>153</b>	<b>410</b>	<b>434</b>	<b>844</b>	<b>169</b>	<b>1,166</b>	<b>1,415</b>	<b>413</b>