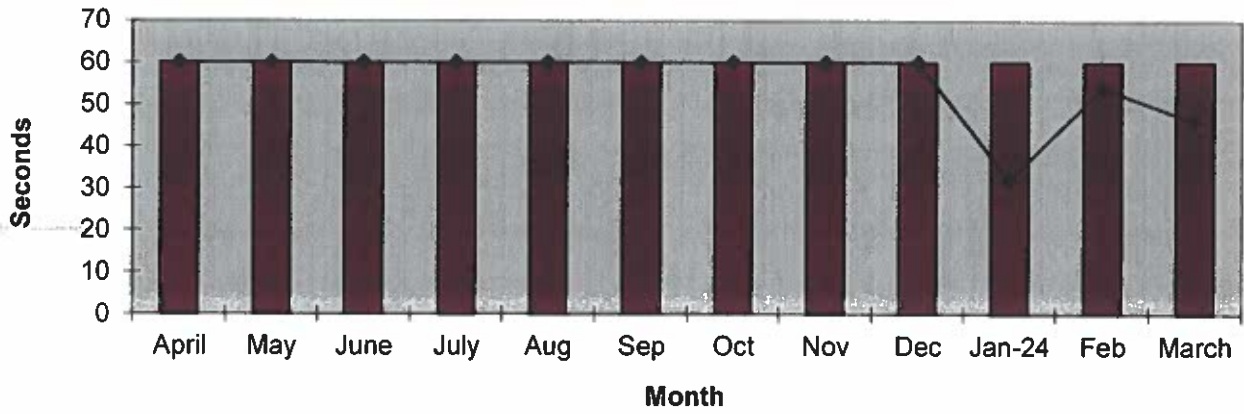
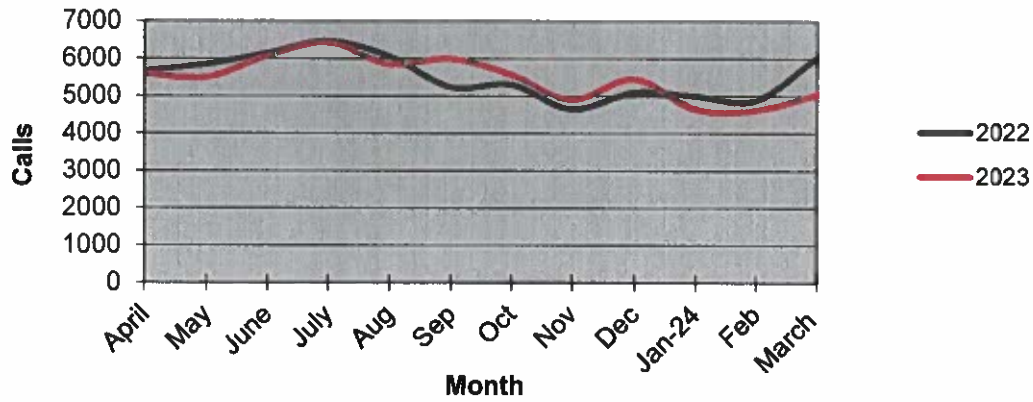


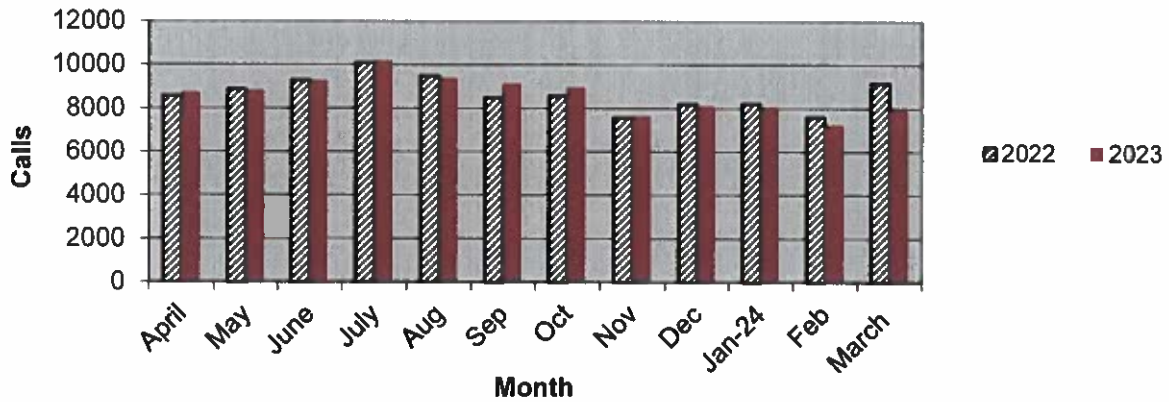
Priority 1 Dispatch Times- Police



911 Calls



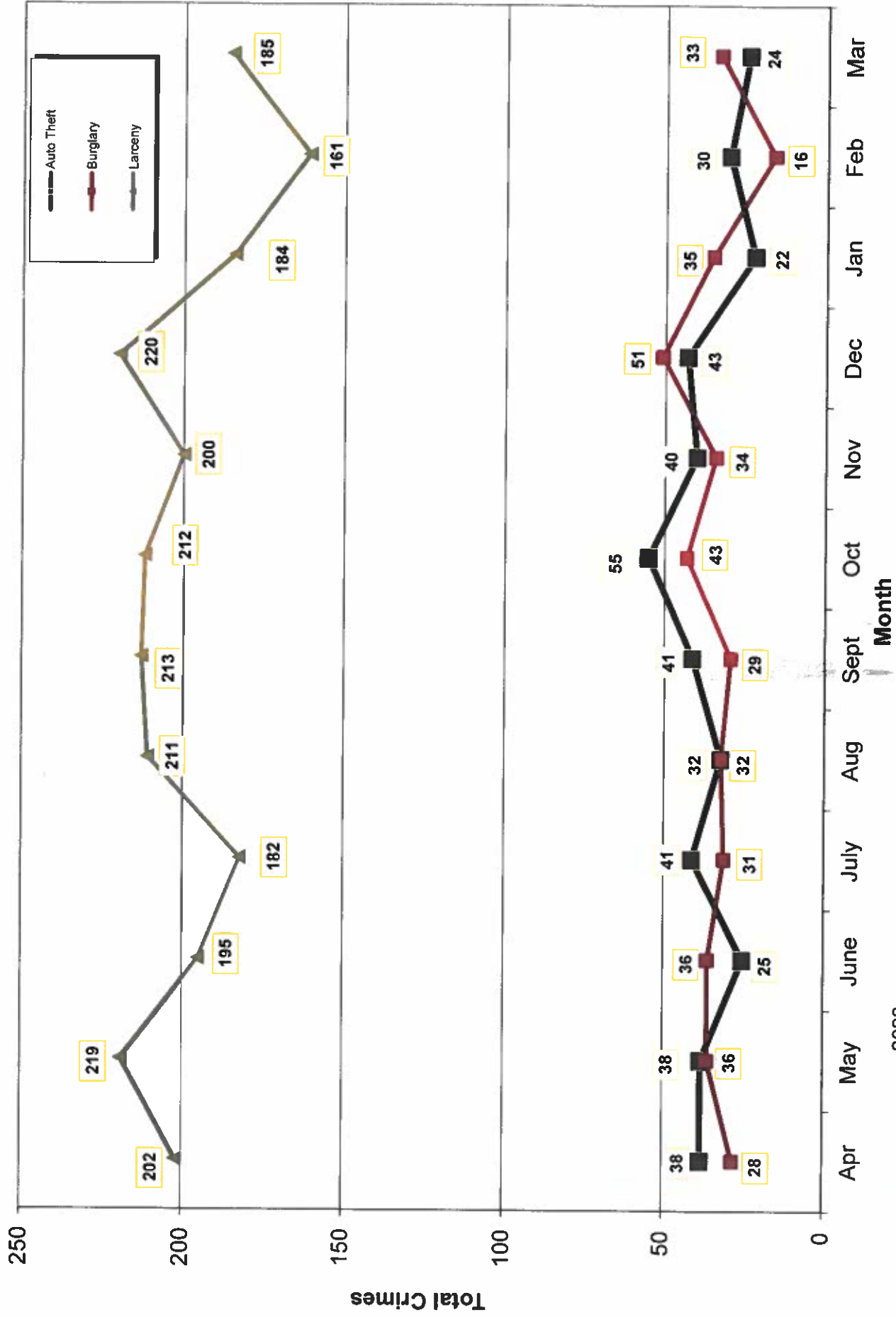
Calls for Service



**OCEANSIDE POLICE DEPARTMENT
FBI INDEX CRIMES**

		MONTHLY CASE ACTIVITY 2024												YEAR TO DATE COMPARISON		% CHANGE	
		JAN	FEB	MAR	APR	MAY	JUN	JUL	AUG	SEP	OCT	NOV	DEC	2023	2024		CHANGE
1. HOMICIDE	Actual	0	0	0	0									2	0	-2	-200.0%
	Cleared	0	0	0	0									3	0	-3	-300.0%
2. RAPE	Actual	3	7	7	7									15	17	2	13.3%
	Cleared	0	0	0	0									1	0	-1	0.0%
3. ROBBERY	Actual	10	17	11	11									27	38	11	40.7%
	Cleared	5	5	3	3									9	13	4	44.4%
4. AGGR. ASSAULT	Actual	60	34	30	30									134	124	-10	-7.5%
	Cleared	32	8	2	2									76	42	-34	-44.7%
5. BURGLARY	Actual	35	16	33	33									138	84	-54	-39.1%
	Cleared	3	1	6	6									13	10	-3	-23.1%
6. LARCENY THEFT	Actual	184	161	185	185									535	530	-5	-0.9%
	Cleared	6	12	10	10									22	28	6	27.3%
7. AUTO THEFT	Actual	22	30	24	24									84	76	-8	-9.5%
	Cleared	1	0	2	2									6	3	-3	-50.0%
TOTAL INDEX CRIMES	Actual	314	265	290	290									935	869	-66	-7.1%
	Cleared	47	26	23	23									130	96	-34	-26.2%
TOTAL PERSON CRIMES	Actual	73	58	48	48									178	179	1	0.6%
	Cleared	37	13	5	5									89	55	-34	-38.2%
TOTAL PROPERTY CRIMES	Actual	241	207	242	242									757	690	-67	-8.9%
	Cleared	10	13	18	18									41	41	0	0.0%
ARSON	Actual	1	4	1	1									11	6	-5	-45.5%
Y-T-D Loss \$14,096	Cleared	1	3	1	1									4	5	1	25.0%

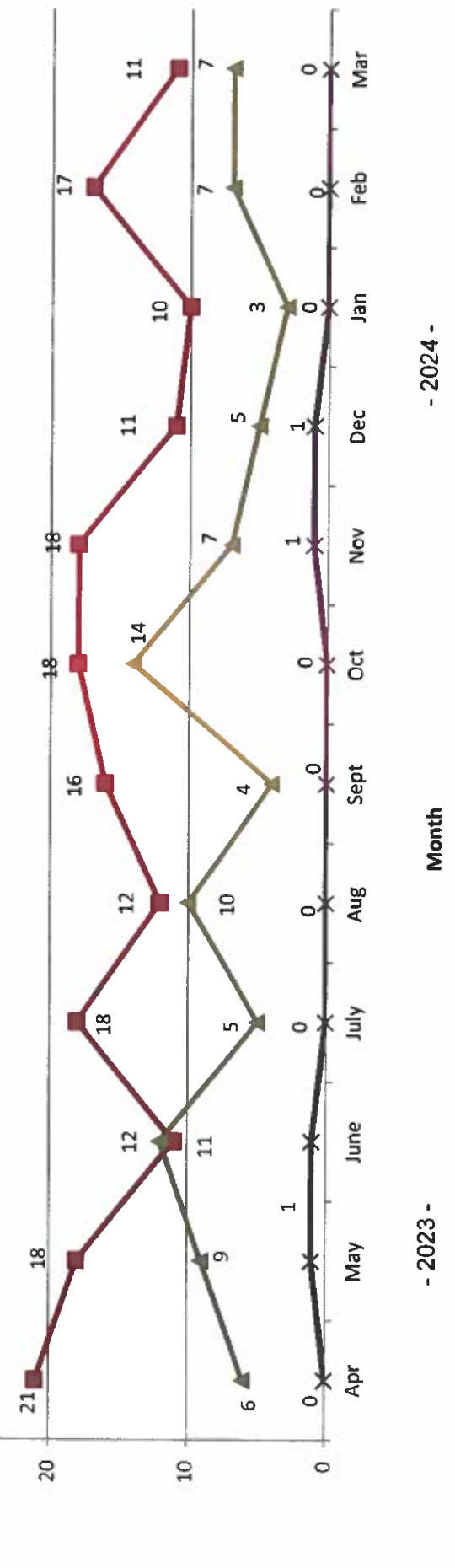
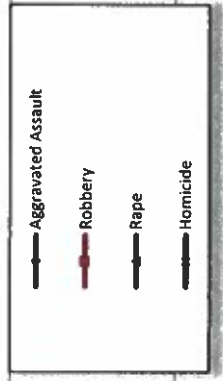
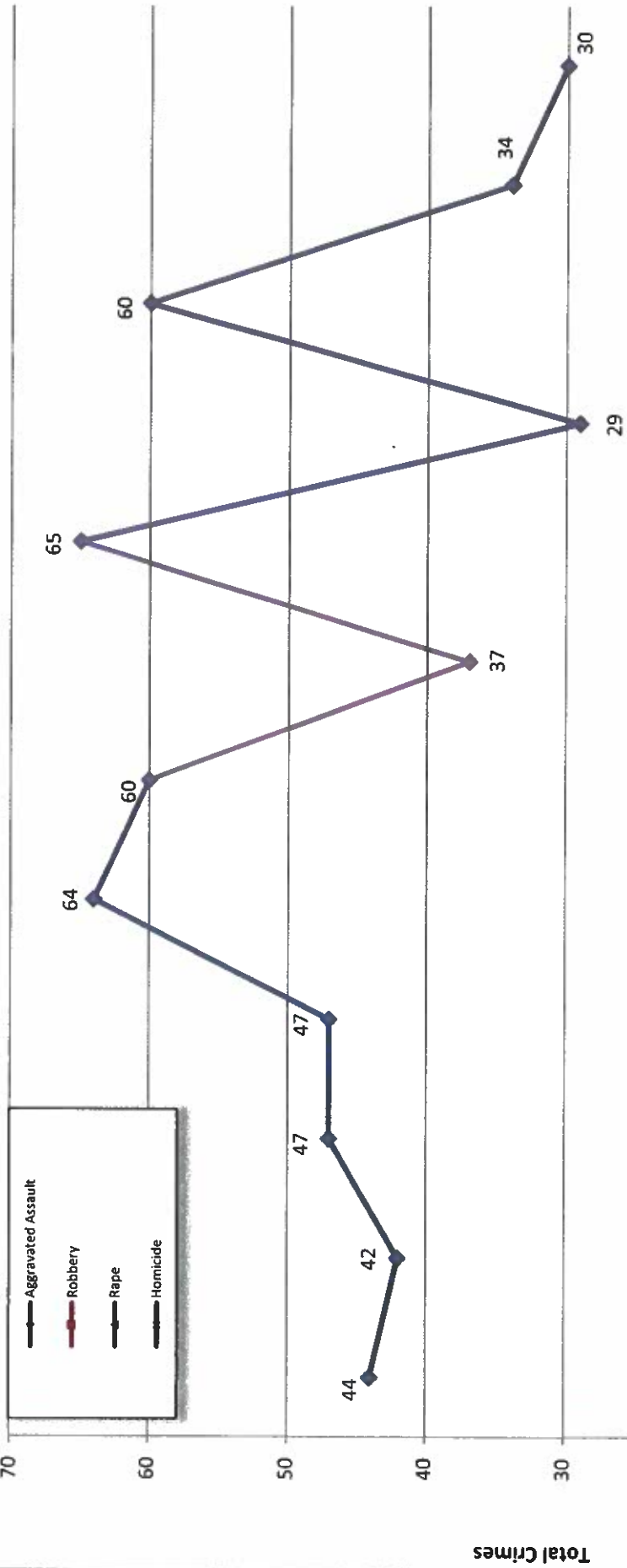
Part 1 Crimes by Month (Property Crimes) 2024



- 2023 -

- 2024 -

Part 1 Crimes by Month (Violent Crimes) 2024

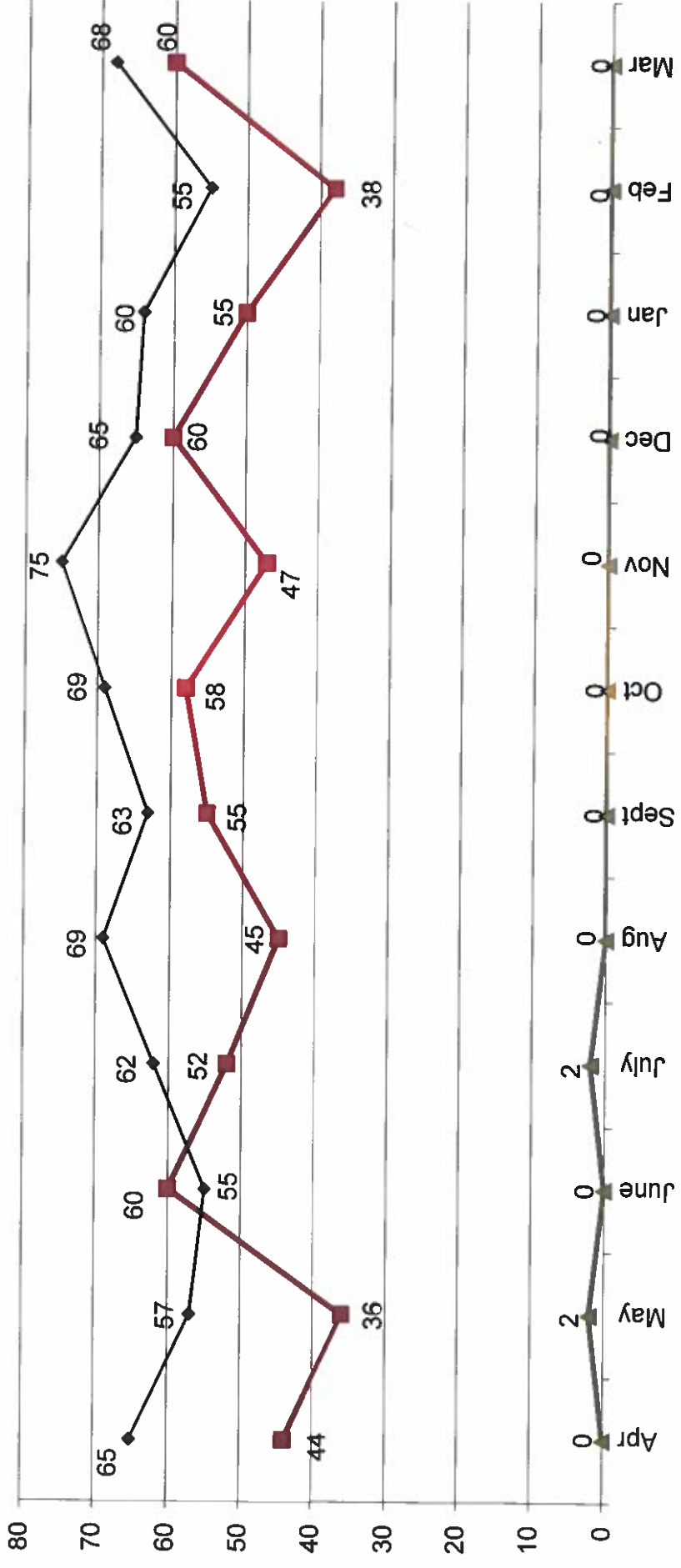
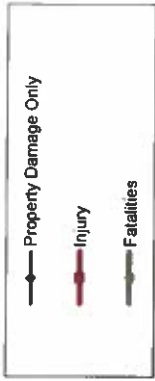


- 2024 -

Month

- 2023 -

Traffic Collisions 2024





UCR Crimes by GeoArea

Required Parameters
 Reporting Period: Mar 2024
 Agency: OCEANSIDE

Optional Parameters
 Geographical Area: All Beats
 Group by: Agency Select by: Neighborhood

Prior Report Number: S1STA120

Neighborhood	MURDER	RAPE	RAPE (HISTORICAL)	ROBBERY--	ST/ ARM	ASSAULT	VIOLENT	---BURGLARY---	---LARCENY-THEFT---	TOTAL	THEFT	CRM TL	CRIME	CAR
				ARMED			CRM TL	RESID	\$400+	TOTAL		CRM TL	IDX TL	PROWL
Agency = OCEANSIDE														
AIRPORT	0	0	0	0	0	2	2	0	1	3	0	4	6	1
EASTSIDE/CAPISTRANO	0	0	0	0	0	2	2	0	1	5	3	10	12	4
FIRE MOUNTAIN	0	0	0	0	0	1	1	2	10	17	2	33	34	5
GUAJOME	0	1	1	1	0	1	3	1	5	6	2	10	13	3
IVEY RAN/RAN DEL ORO	0	1	1	0	0	1	2	0	4	12	1	22	24	5
IVY RAN/RAN DEL ORO	0	0	0	0	0	0	0	0	1	2	0	2	2	2
LAKE	0	0	0	1	1	2	4	0	4	12	2	20	24	7
MIRA COSTA	0	0	0	0	0	4	4	1	8	6	2	19	23	11
MISSN MESALOMA ALTA	0	2	1	1	0	3	6	0	9	8	1	19	25	7
MORRO HILLS	0	0	0	0	0	0	0	0	1	2	0	2	2	0
NORTH VALLEY	0	0	0	0	0	2	2	1	2	3	0	5	7	1
OCEAN HILLS	0	0	0	0	0	0	0	0	4	4	1	9	9	3
OCEANA	0	0	0	0	0	0	0	0	3	1	4	5	5	1
SAN LUIS REY	0	0	0	2	3	2	7	0	10	13	1	16	23	5
SOUTH OCEANSIDE	0	1	1	0	0	2	3	0	5	4	1	12	15	2
TOWNSITE	0	2	2	1	1	7	11	4	12	20	5	46	57	12
TRI CITY	0	0	0	0	0	1	1	0	4	1	2	7	8	2
UNKNOWN	0	0	0	0	0	0	0	0	1	0	0	1	1	1
SUB-TOTAL	0	7	6	5	30	48	9	24	87	98	24	242	290	72
GRAND TOTALS	0	7	6	5	30	48	9	24	87	98	24	242	290	72



UCR Crimes by GeoArea

Required Parameters
 Reporting Period: Jan 2024 to Mar 2024
 Agency: OCEANSIDE

Optional Parameters
 Geographical Area: All Beats
 Group by: Agency Select by: Neighborhood

Prior Report Number: S1STA120

Neighborhood	MURDER	RAPE	RAPE (HISTORICAL)	ROBBERY--	ARMED	ST/ ARM	ASSAULT	VIOLENT	AGGRVD	BURGLARY----	NRESID	TOTAL	\$400+	<\$400	TOTAL	THEFT	CRM TL	PROPERTY	CRIME	CAR	
Agency = OCEANSIDE																					
AIRPORT	0	0	0	0	0	0	11	11	0	3	3	7	6	1	7	2	12			23	3
EASTSIDE/CAPISTRANO	0	1	0	0	0	0	9	10	3	2	5	24	13	11	24	7	36			46	16
FIRE MOUNTAIN	0	0	0	0	1	0	12	13	2	4	6	91	39	52	91	6	103			116	14
GUAJOME	0	3	2	1	0	0	3	7	1	1	2	32	23	9	32	2	36			43	20
IVEY RAN/RAN DEL ORO	0	2	2	0	2	0	7	11	1	6	7	44	20	24	44	10	61			72	20
IVY RAN/RAN DEL ORO	0	0	0	0	1	0	0	1	0	3	3	2	2	0	2	1	6			7	2
LAKE	0	0	0	0	8	2	5	15	0	2	2	42	17	25	42	4	48			63	11
MIRA COSTA	0	3	2	2	0	0	9	14	4	2	6	37	21	16	37	10	53			67	28
MISSN MESA/LOMA ALTA	0	2	1	1	2	2	13	18	2	5	7	43	22	21	43	5	55			73	20
MORRO HILLS	0	0	0	0	1	0	1	2	1	1	2	8	6	2	8	0	10			12	3
NORTH VALLEY	0	1	1	0	1	0	7	9	3	2	5	7	2	5	7	1	13			22	2
OCEAN HILLS	0	0	0	0	0	0	0	0	0	0	0	12	4	8	12	1	13			13	5
OCEANA	0	0	0	0	0	0	2	2	0	0	0	7	5	7	12	1	13			15	5
SAN LUIS REY	0	2	1	4	3	9	9	18	2	6	8	40	22	18	40	6	54			72	14
SOUTH OCEANSIDE	0	1	1	0	0	0	5	6	3	4	7	24	9	15	24	4	35			41	3
TOWNSITE	0	2	2	2	7	26	37	37	9	12	21	89	43	46	89	14	124			161	33
TRI CITY	0	0	0	0	0	0	5	5	0	0	0	14	8	6	14	2	16			21	6
UNKNOWN	0	0	0	0	0	0	0	0	0	0	0	2	2	0	2	0	2			2	2
SUB-TOTAL	0	17	13	19	19	124	179	179	31	53	84	530	264	266	530	76	690			869	207
GRAND TOTALS	0	17	13	19	19	124	179	179	31	53	84	530	264	266	530	76	690			869	207