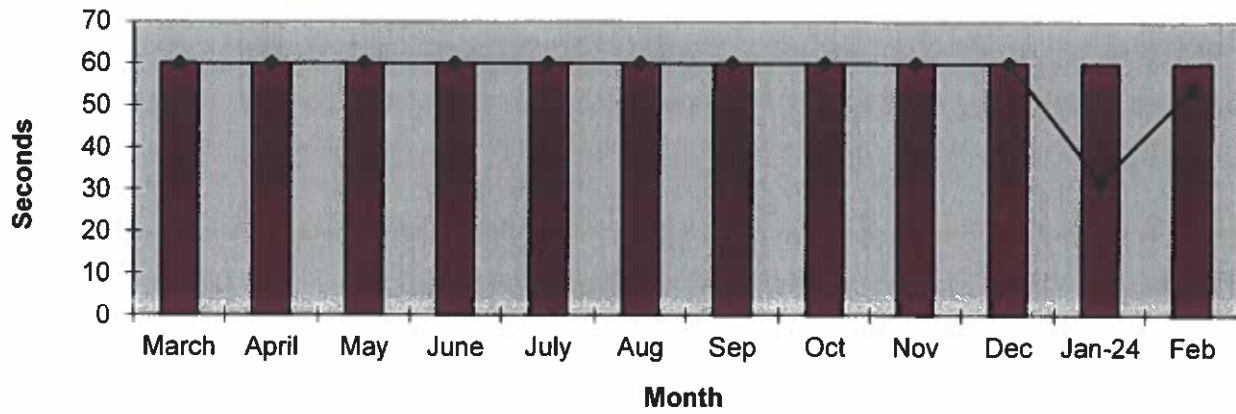
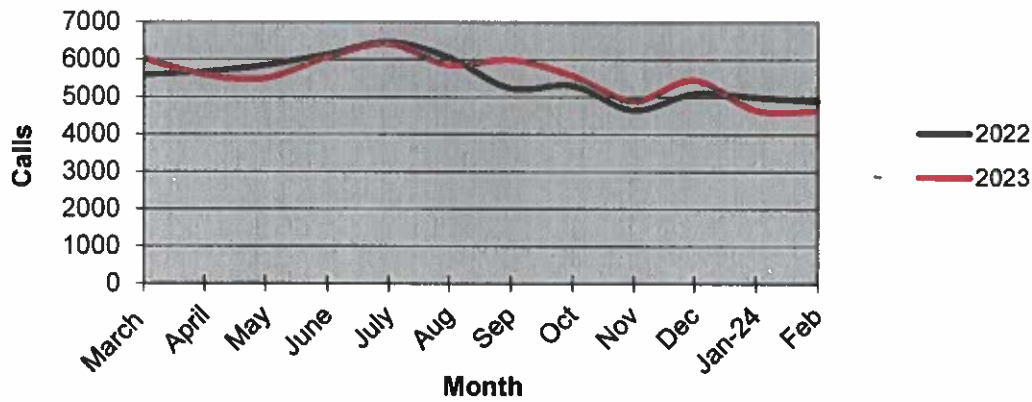


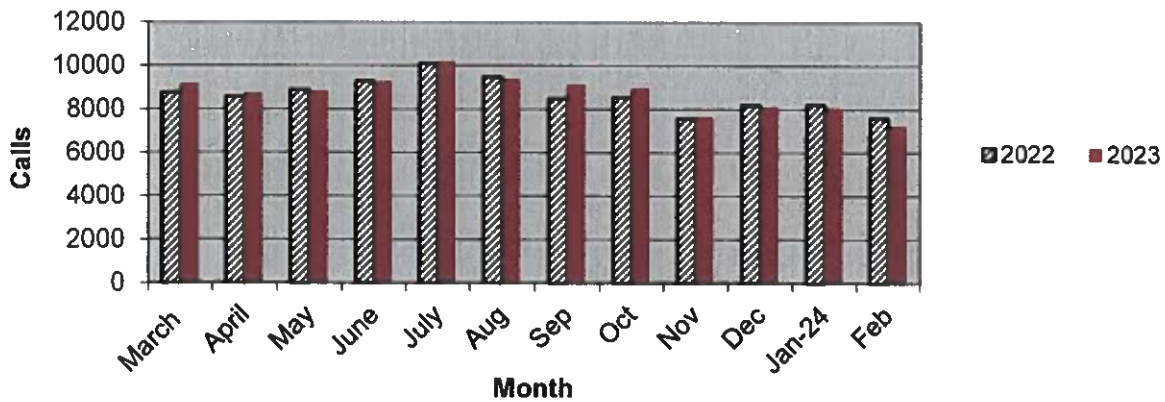
### Priority 1 Dispatch Times- Police



### 911 Calls



### Calls for Service

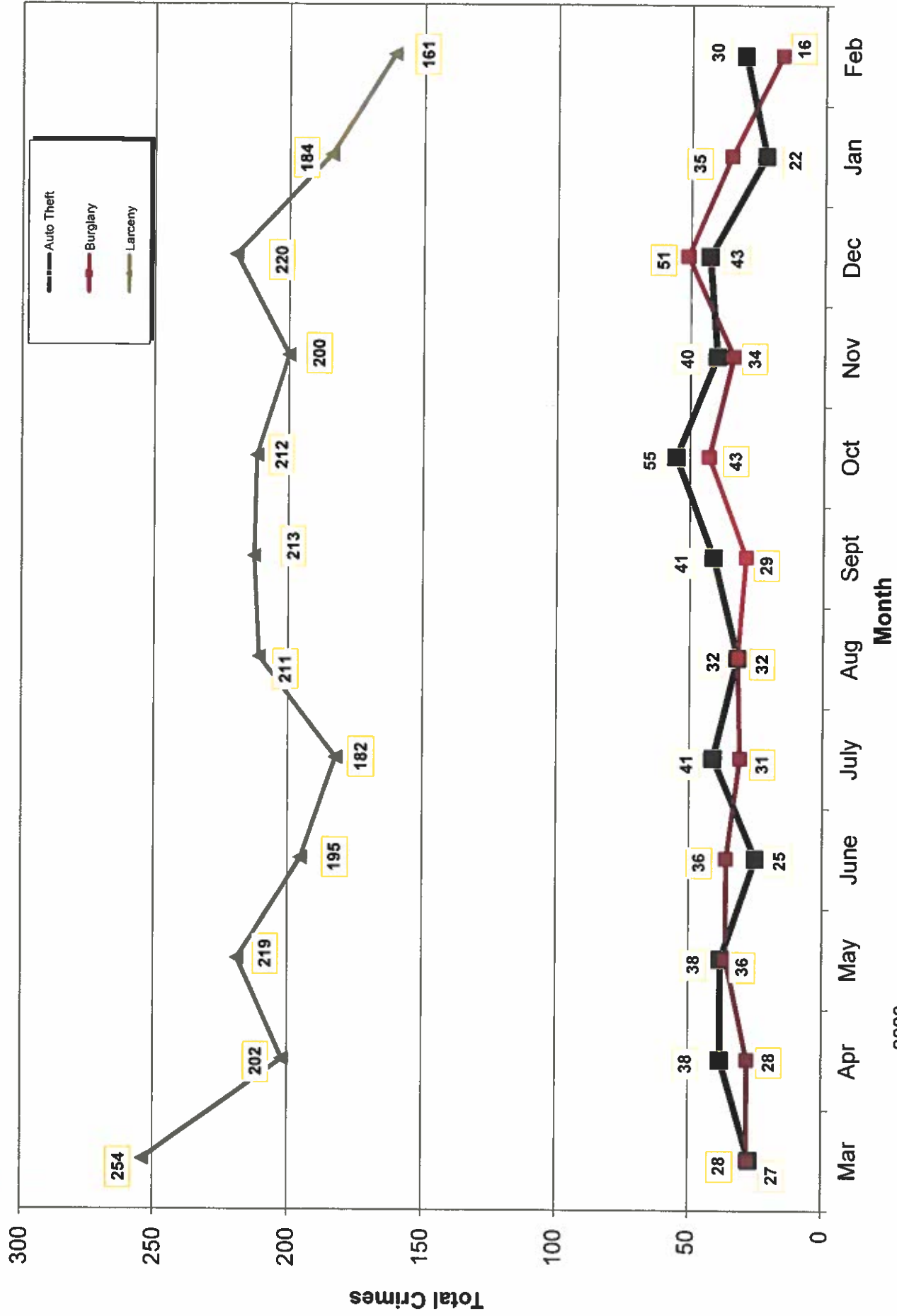


**OCEANSIDE POLICE DEPARTMENT  
FBI INDEX CRIMES**

**MONTHLY CASE ACTIVITY 2024**

	MONTHLY CASE ACTIVITY 2024												YEAR TO DATE COMPARISON		% CHANGE	
	JAN	FEB	MAR	APR	MAY	JUN	JUL	AUG	SEP	OCT	NOV	DEC	2023	2024		CHANGE
1. HOMICIDE	Actual 0	0	0										1	0	-1	-50.0%
	Cleared 0	0	0										2	0	-2	-100.0%
2. RAPE	Actual 3	7											9	10	1	11.1%
	Cleared 0	0											0	0	0	0.0%
3. ROBBERY	Actual 10	17											17	27	10	58.8%
	Cleared 5	5											5	10	5	100.0%
4. AGGR. ASSAULT	Actual 60	34											88	94	6	6.8%
	Cleared 32	8											45	40	-5	-11.1%
5. BURGLARY	Actual 35	16											86	51	-35	-40.7%
	Cleared 3	1											7	4	-3	-42.9%
6. LARCENY THEFT	Actual 184	161											356	345	-11	-3.1%
	Cleared 6	12											15	18	3	20.0%
7. AUTO THEFT	Actual 22	30											57	52	-5	-8.8%
	Cleared 1	0											4	1	-3	-75.0%
TOTAL INDEX CRIMES	Actual 314	265											614	579	-35	-5.7%
	Cleared 47	26											78	73	-5	-6.4%
TOTAL PERSON CRIMES	Actual 73	58											115	131	16	13.9%
	Cleared 37	13											52	50	-2	-3.8%
TOTAL PROPERTY CRIMES	Actual 241	207											499	448	-51	-10.2%
	Cleared 10	13											26	23	-3	-11.5%
ARSON	Actual 1	4											9	5	-4	-44.4%
Y-T-D Loss \$11,596	Cleared 1	3											4	4	0	0.0%

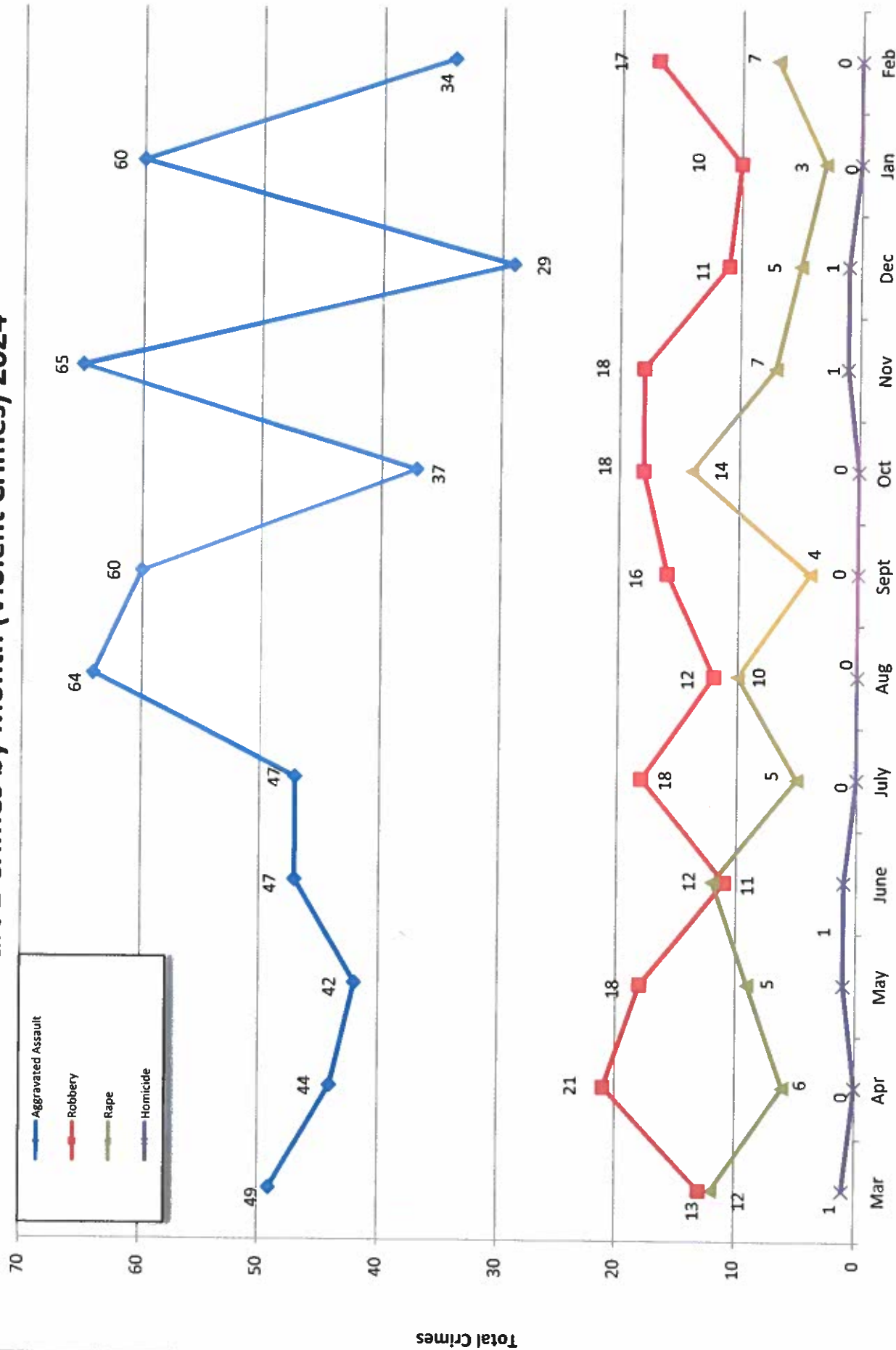
# Part 1 Crimes by Month (Property Crimes) 2024



- 2023 -

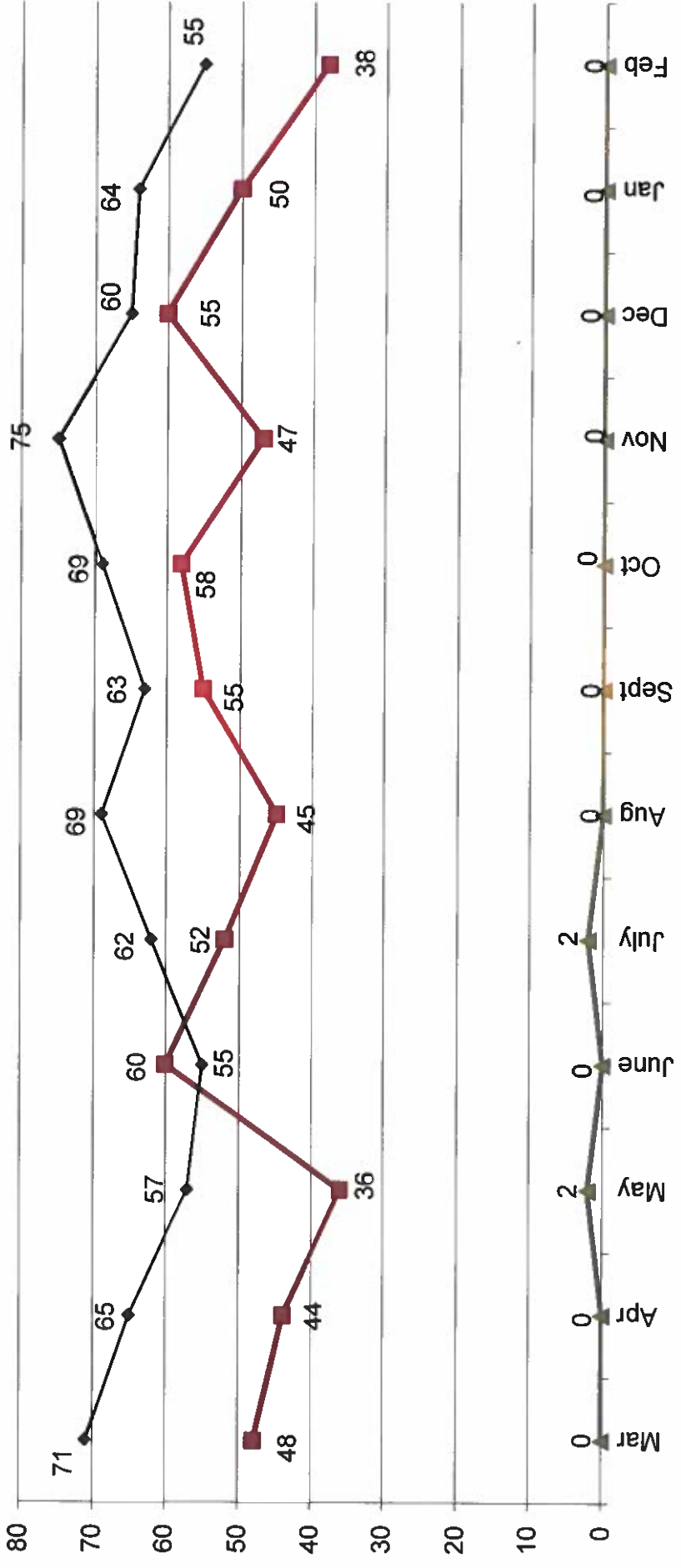
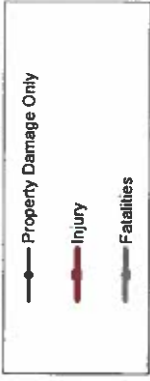
- 2024 -

# Part 1 Crimes by Month (Violent Crimes) 2024



- 2023 - Month - 2024 -

# Traffic Collisions 2024





# UCR Crimes by GeoArea

**Required Parameters**  
 Reporting Period: Feb 2024  
 Agency: OCEANSIDE

**Optional Parameters**  
 Geographical Area: All Beats  
 Group by: Agency Select by: Neighborhood

Prior Report Number: S1STA120

Neighborhood	MURDER	RAPE (HISTORICAL)	ROBBERY---	AGGRVD	VIOLENT	ASSAULT	CRM TL	RESID	NRESID	TOTAL	\$400+	<\$400	TOTAL	THEFT	CRM TL	IDX TL	CRIME	CAR	PROWL		
			ARMED	ST/ ARM																	
Agency = OCEANSIDE																					
AIRPORT	0	0	0	0	0	4	4	0	0	0	0	1	1	1	2	6	1				
EASTSIDE/CAPISTRANO	0	1	1	0	0	3	4	1	1	2	5	4	9	1	12	16	5				
FIRE MOUNTAIN	0	0	0	0	1	4	5	0	1	1	17	10	27	3	31	36	3				
GUALOME	0	2	1	0	0	2	4	0	0	0	9	4	13	0	13	17	8				
IVEY RAN/RAN DEL ORO	0	1	1	0	1	2	4	0	1	1	5	4	9	5	15	19	3				
IVY RAN/RAN DEL ORO	0	0	0	0	0	0	0	0	1	1	0	0	0	1	2	2	0				
LAKE	0	0	0	4	0	1	5	0	0	0	7	7	14	2	16	21	2				
MIRA COSTA	0	2	2	1	0	4	7	1	0	1	4	3	7	5	13	20	4				
MISSN MESA/LOMA ALTA	0	0	0	0	2	5	7	0	2	2	5	6	11	1	14	21	8				
MORRO HILLS	0	0	0	1	0	0	1	0	0	0	3	0	3	0	3	4	2				
NORTH VALLEY	0	0	0	0	1	1	2	0	0	0	0	3	3	1	4	6	0				
OCEAN HILLS	0	0	0	0	0	0	0	0	0	0	0	2	2	0	2	2	0				
OCEANA	0	0	0	0	0	0	0	0	0	0	2	4	6	0	6	6	2				
SAN LUIS REY	0	1	1	1	1	3	6	1	1	2	5	9	14	1	17	23	7				
SOUTH OCEANSIDE	0	0	0	0	0	1	1	2	0	2	1	6	7	1	10	11	0				
TOWNSITE	0	0	0	1	3	3	7	1	3	4	18	13	31	8	43	50	14				
TRI CITY	0	0	0	0	0	1	1	0	0	0	1	2	3	0	3	4	1				
UNKNOWN	0	0	0	0	0	0	0	0	0	0	1	0	1	0	1	1	1				
<b>SUB-TOTAL</b>	<b>0</b>	<b>7</b>	<b>6</b>	<b>8</b>	<b>9</b>	<b>34</b>	<b>58</b>	<b>6</b>	<b>10</b>	<b>16</b>	<b>83</b>	<b>78</b>	<b>161</b>	<b>30</b>	<b>207</b>	<b>265</b>	<b>61</b>				
<b>GRAND TOTALS</b>	<b>0</b>	<b>7</b>	<b>6</b>	<b>8</b>	<b>9</b>	<b>34</b>	<b>58</b>	<b>6</b>	<b>10</b>	<b>16</b>	<b>83</b>	<b>78</b>	<b>161</b>	<b>30</b>	<b>207</b>	<b>265</b>	<b>61</b>				



# UCR Crimes by GeoArea

**Required Parameters**  
 Reporting Period: Jan 2024 to Feb 2024  
 Agency: OCEANSIDE

**Optional Parameters**  
 Geographical Area: All Beats  
 Group by: Agency Select by: Neighborhood

Prior Report Number: S1STA120

Neighborhood	MURDER	RAPE	RAPE (HISTORICAL)	ROBBERY--	AGGRVD	VIOLENT	BURGLARY----	LARCENY-THEFT--	M.VEH	PROPERTY	CRIME	CAR						
				ARMED	ST/ ARM	ASSAULT	CRM TL	RESID	NRESID	TOTAL	\$400+	<\$400	TOTAL	THEFT	CRM TL	IDX TL	PROWL	
*****																		
Agency = OCEANSIDE																		
AIRPORT	0	0	0	0	0	9	9	0	2	2	3	1	4	2	8	17	2	
EASTSIDE/CAPISTRANO	0	1	1	0	0	7	8	3	1	4	12	6	18	4	26	34	12	
FIRE MOUNTAIN	0	0	0	0	1	11	12	0	2	2	29	35	64	4	70	82	9	
GUAJOME	0	2	1	0	0	2	4	0	0	0	18	8	26	0	26	30	17	
IVEY RAN/RAN DEL ORO	0	1	1	0	2	6	9	1	2	3	15	12	27	9	39	48	15	
IVY RAN/RAN DEL ORO	0	0	0	0	1	0	1	0	3	3	1	-1	0	1	4	5	0	
LAKE	0	0	0	7	1	3	11	0	0	0	13	13	26	2	28	39	4	
MIRA COSTA	0	3	2	2	0	5	10	3	0	3	13	10	23	8	34	44	17	
MISSN MESA/LOMA ALTA	0	0	0	0	2	10	12	2	4	6	13	13	26	4	36	48	13	
MORRO HILLS	0	0	0	1	0	1	2	1	1	2	5	1	6	0	8	10	3	
NORTH VALLEY	0	1	1	0	1	5	7	2	1	3	1	3	4	1	8	15	1	
OCEAN HILLS	0	0	0	0	0	0	0	0	0	0	0	4	4	0	4	4	2	
OCEANA	0	0	0	0	0	2	2	0	0	0	2	6	8	0	8	10	4	
SAN LUIS REY	0	2	1	2	0	7	11	2	4	6	12	15	27	5	38	49	9	
SOUTH OCEANSIDE	0	0	0	0	0	3	3	3	2	5	4	11	15	3	23	26	1	
TOWNSITE	0	0	0	1	6	19	26	5	7	12	31	26	57	9	78	104	21	
TRI CITY	0	0	0	0	0	4	4	0	0	0	4	5	9	0	9	13	4	
UNKNOWN	0	0	0	0	0	0	0	0	0	0	1	0	1	0	1	1	1	
SUB-TOTAL	0	10	7	13	14	94	131	22	29	51	177	168	345	52	448	579	135	
GRAND TOTALS	0	10	7	13	14	94	131	22	29	51	177	168	345	52	448	579	135	