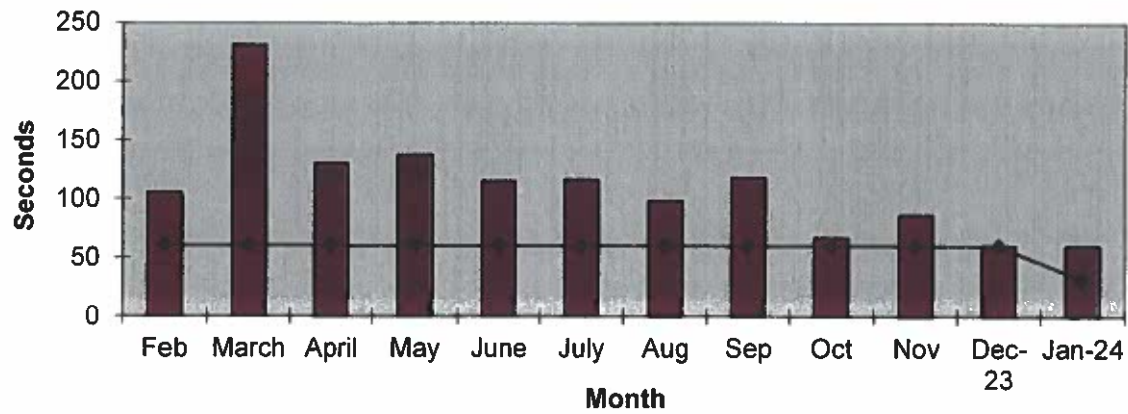
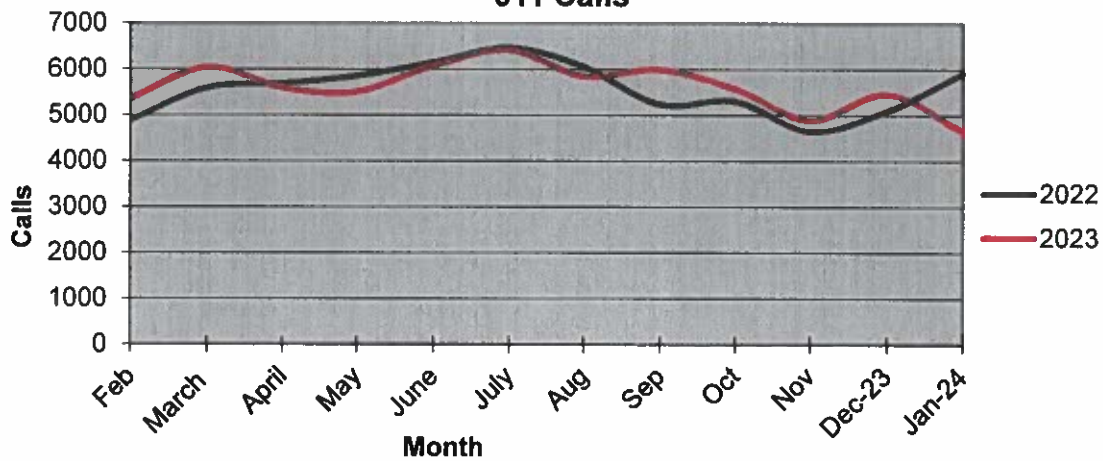


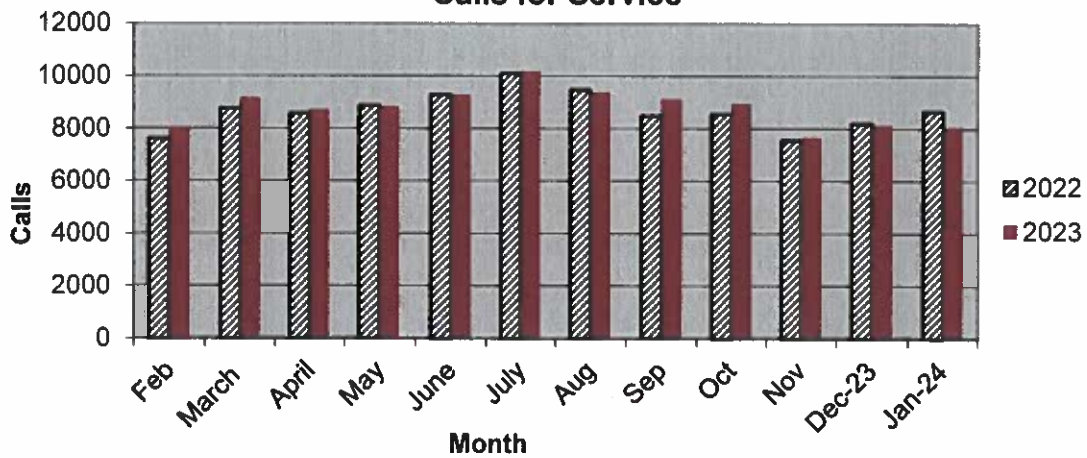
Priority 1 Dispatch Times- Police



911 Calls



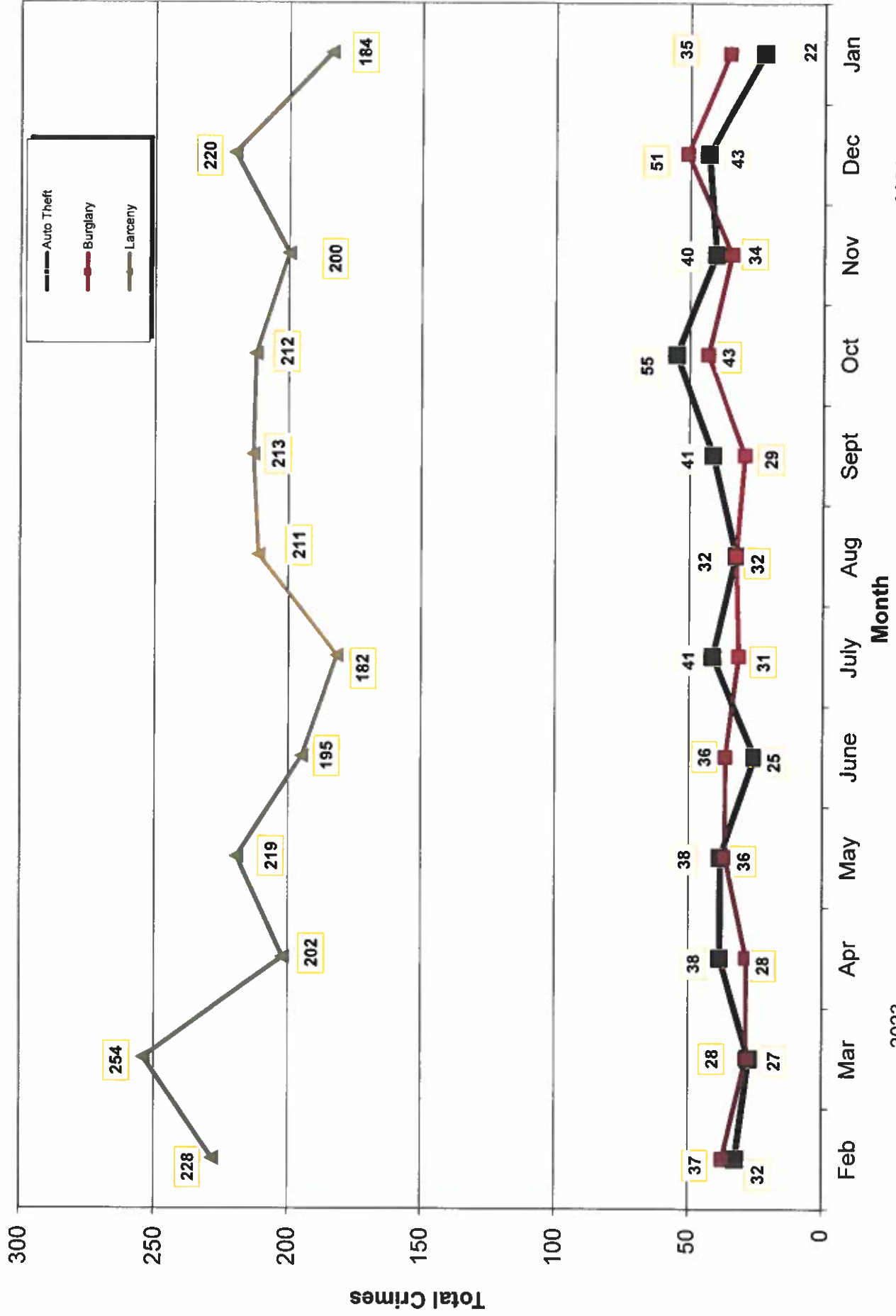
Calls for Service



**OCEANSIDE POLICE DEPARTMENT
FBI INDEX CRIMES**

		MONTHLY CASE ACTIVITY 2024												YEAR TO DATE COMPARISON		% CHANGE		
		JAN	FEB	MAR	APR	MAY	JUN	JUL	AUG	SEP	OCT	NOV	DEC	2023	2024 CHANGE			
1. HOMICIDE	Actual	0													1	0	-1	-100.0%
	Cleared	0													1	0	-1	100.0%
2. RAPE	Actual	3													2	3	1	50.0%
	Cleared	0													0	0	0	#DIV/0!
3. ROBBERY	Actual	10													8	10	2	25.0%
	Cleared	5													5	5	0	0.0%
4. AGGR. ASSAULT	Actual	60													47	60	13	27.7%
	Cleared	32													24	32	8	33.3%
5. BURGLARY	Actual	35													38	35	-3	-7.9%
	Cleared	3													3	3	0	0.0%
6. LARCENY THEFT	Actual	184													189	184	-5	-2.6%
	Cleared	6													4	6	2	50.0%
7. AUTO THEFT	Actual	22													20	22	2	10.0%
	Cleared	1													2	1	-1	200.0%
TOTAL INDEX CRIMES	Actual	314													305	314	9	3.0%
	Cleared	47													39	47	8	20.5%
TOTAL PERSON CRIMES	Actual	73													58	73	15	25.9%
	Cleared	37													30	37	7	23.3%
TOTAL PROPERTY CRIMES	Actual	241													247	241	-6	-2.4%
	Cleared	10													9	10	1	11.1%
ARSON	Actual	1													5	1	-4	-80.0%
Y-T-D Loss \$10	Cleared	1													2	1	-1	-50.0%

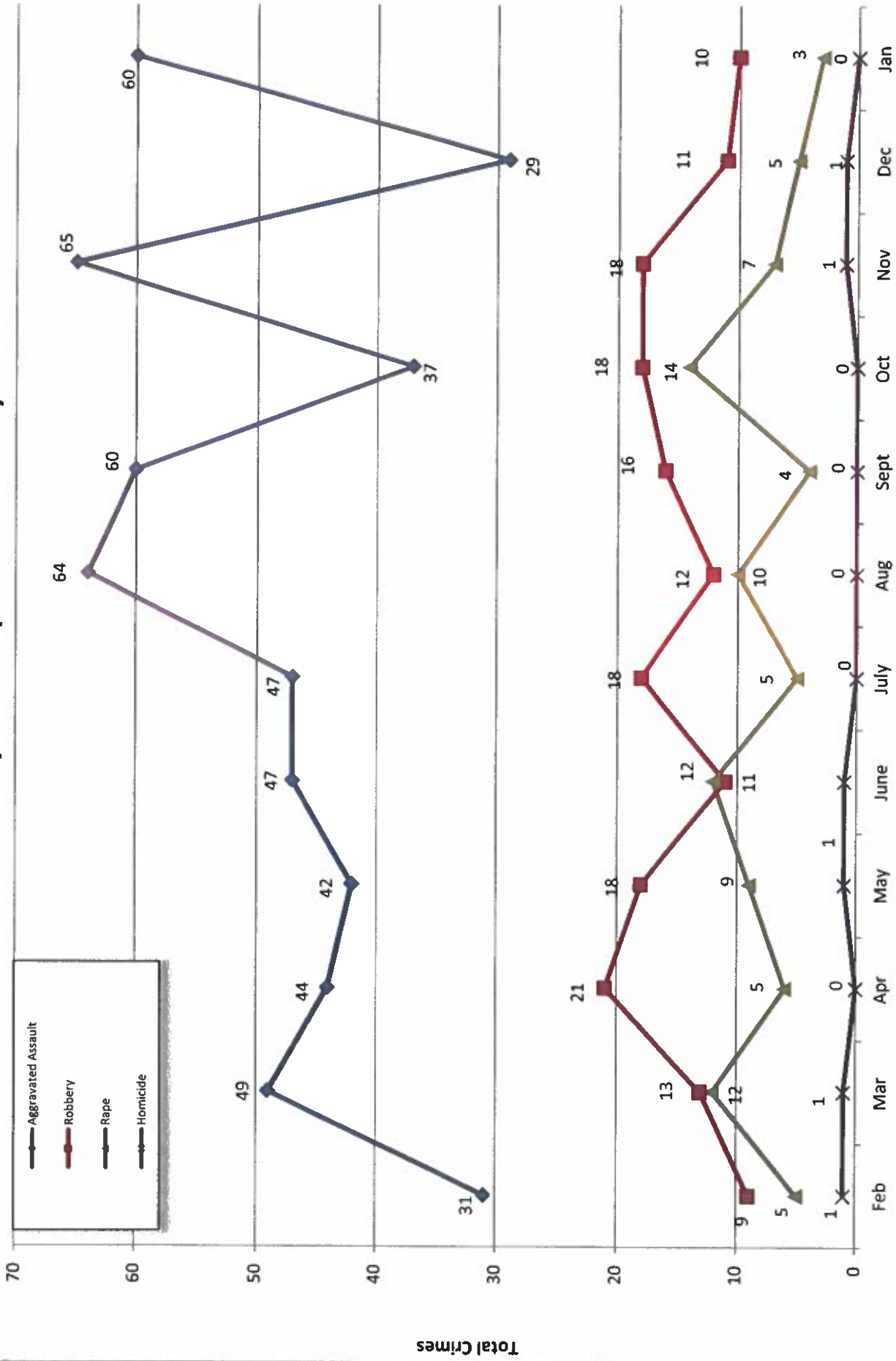
Part 1 Crimes by Month (Property Crimes) 2024



- 2023 -

- 2024 -

Part 1 Crimes by Month (Violent Crimes) 2024

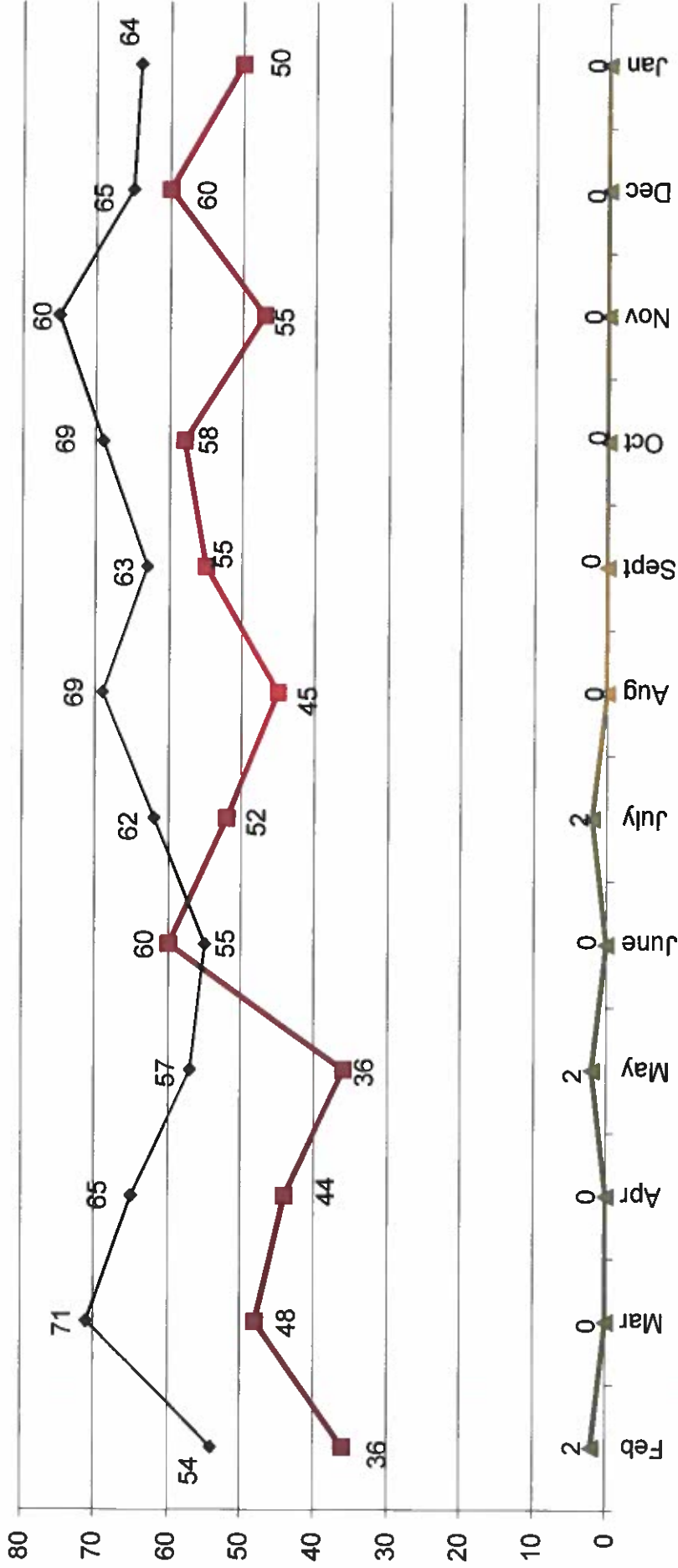
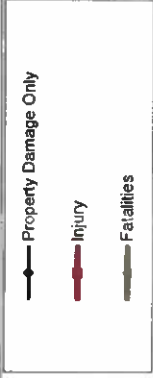


- 2024 -

Month

- 2023 -

Traffic Collisions 2024



-2023-

-2024-



UCR Crimes by GeoArea

Required Parameters
 Reporting Period: Jan 2024
 Agency: OCEANSIDE

Optional Parameters
 Geographical Area: All Beats
 Group by: Agency Select by: Neighborhood

Prior Report Number: S1STA120

Neighborhood	MURDER	RAPE (HISTORICAL)	RAPE	ROBBERY--	AGGRVD	VIOLENT	BURGLARY----	LARCENY-THEFT--	TOTAL	THEFT	PROPERTY	CRIME	CAR
				ARMED	ASSAULT	CRM TL	NRESID	\$400+	<\$400		CRM TL	IDX TL	PROWL
			ST/ ARM				TOTAL						
Agency = OCEANSIDE													
AIRPORT	0	0	0	0	5	5	2	3	0	3	6	11	1
EASTSIDE/CAPISTRANO	0	0	0	0	4	4	2	7	2	9	14	18	7
FIRE MOUNTAIN	0	0	0	0	7	7	1	12	25	37	39	46	6
GUAJOME	0	0	0	0	0	0	0	9	4	13	13	13	9
IVEY RAN/RAN DEL ORO	0	0	1	4	5	5	1	10	8	18	24	29	12
IVY RAN/RAN DEL ORO	0	0	1	0	1	1	2	1	-1	0	2	3	0
LAKE	0	0	3	1	2	6	0	6	6	12	12	18	2
MIRA COSTA	0	1	1	0	1	3	2	9	7	16	21	24	13
MISSN MESALOMA ALTA	0	0	0	0	5	5	2	8	7	15	22	27	5
MORRO HILLS	0	0	0	0	1	1	1	2	1	3	5	6	1
NORTH VALLEY	0	1	0	4	5	5	2	1	0	1	4	9	1
OCEAN HILLS	0	0	0	0	0	0	0	0	2	2	2	2	2
OCEANA	0	0	0	2	2	2	0	0	2	2	2	4	2
SAN LUIS REY	0	1	1	4	5	5	1	7	6	13	21	26	2
SOUTH OCEANSIDE	0	0	0	2	2	2	2	3	5	8	13	15	1
TOWNSITE	0	0	3	16	19	19	4	13	13	26	35	54	7
TRI CITY	0	0	0	3	3	3	0	3	3	6	6	9	3
UNKNOWN	0	0	0	0	0	0	0	0	0	0	0	0	0
SUB-TOTAL	0	3	5	60	73	73	16	94	90	184	241	314	74
GRAND TOTALS	0	3	5	60	73	73	16	94	90	184	241	314	74