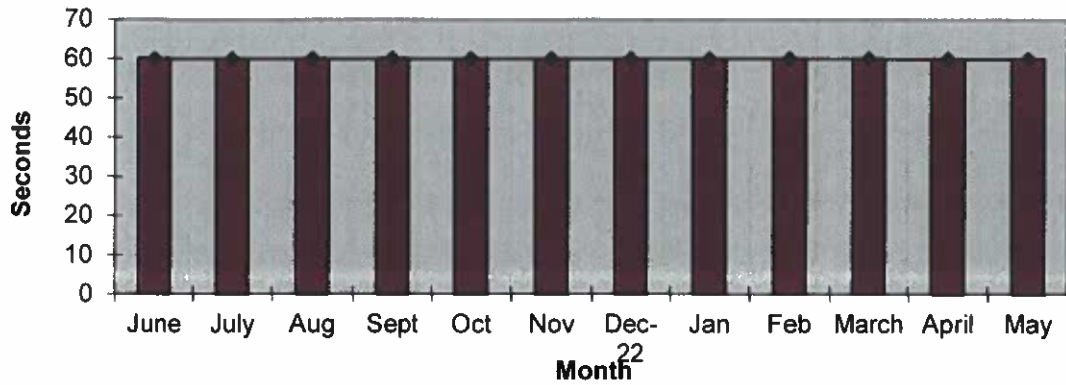
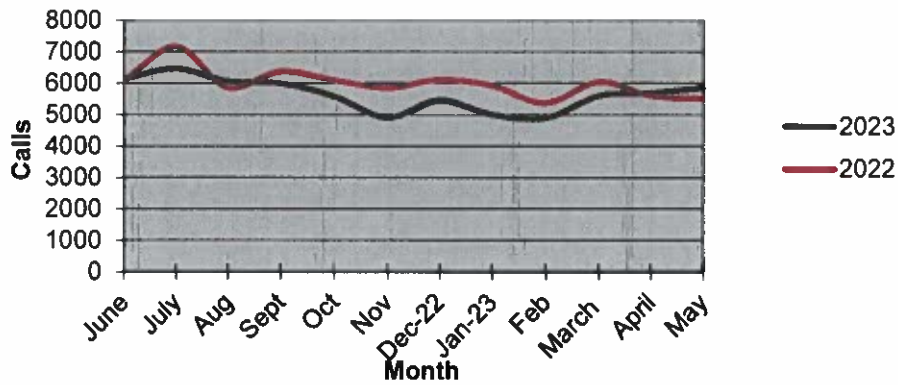


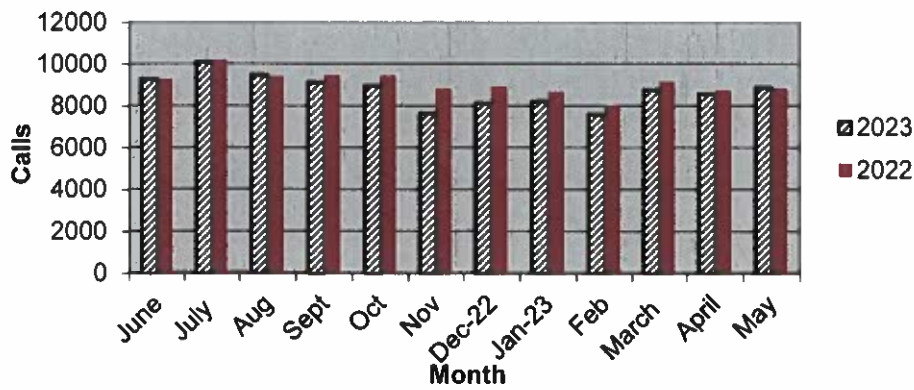
Priority 1 Dispatch Times- Police



911 Calls



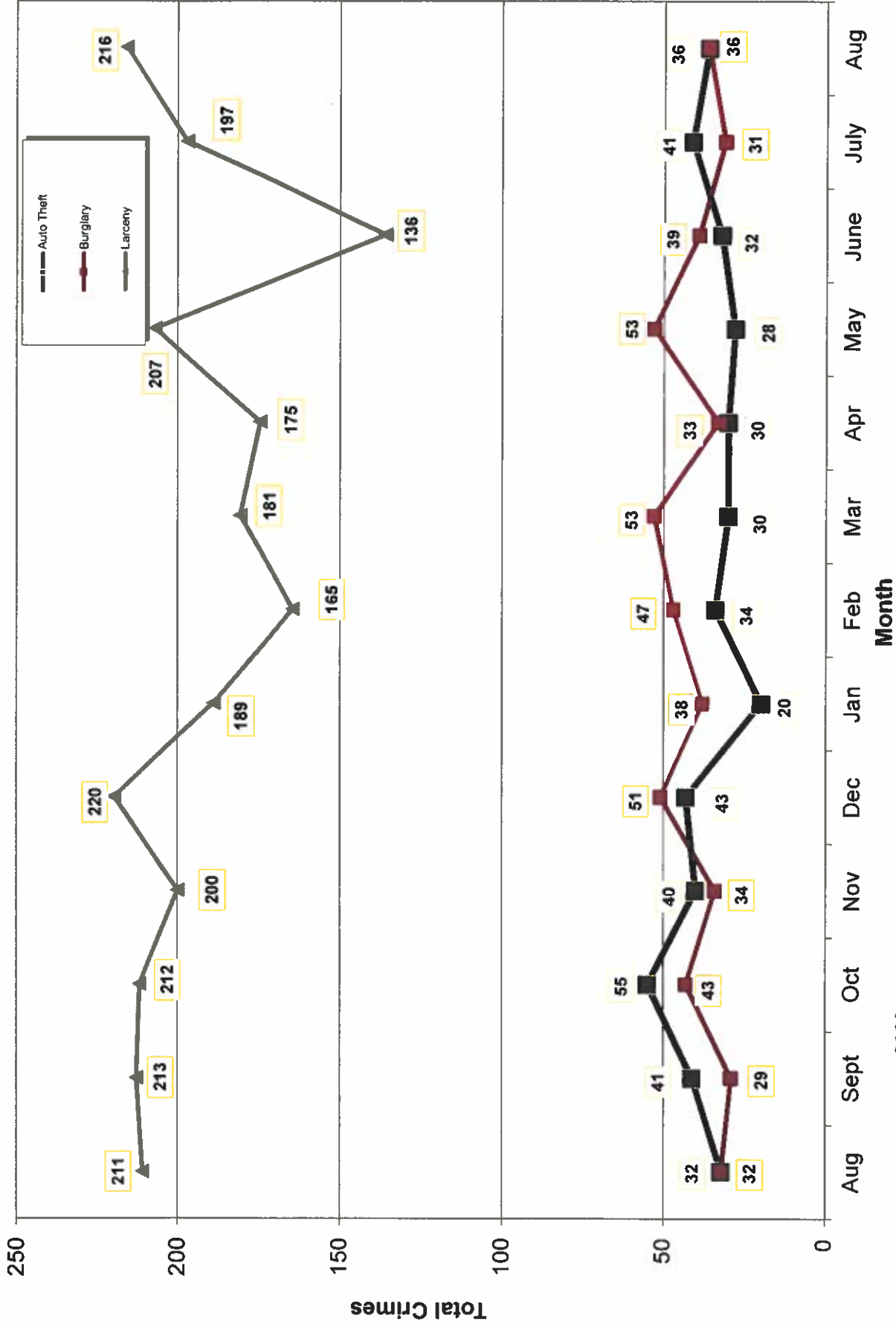
Calls for Service



**OCEANSIDE POLICE DEPARTMENT
FBI INDEX CRIMES**

	MONTHLY CASE ACTIVITY 2023												YEAR TO DATE COMPARISON		% CHANGE	
													2022	2023		CHANGE
	JAN	FEB	MAR	APR	MAY	JUN	JUL	AUG	SEP	OCT	NOV	DEC				
1. HOMICIDE	1	0	1	0	0	0	1	0	0	0	0	0	4	3	-1	-25.0%
	Cleared	1	1	0	0	0	0	0	0	0	0	0	2	3	1	50.0%
2. RAPE	2	7	6	4	7	9	5	4	4	4	4	7	37	44	7	18.9%
	Cleared	0	0	1	0	1	3	0	0	0	0	0	5	5	0	0.0%
3. ROBBERY	8	9	10	6	8	6	10	14	14	14	14	14	130	71	-59	-45.4%
	Cleared	5	0	4	1	2	3	1	7	7	7	7	45	23	-22	-48.9%
4. AGGR. ASSAULT	47	36	51	54	58	54	45	55	55	55	55	55	350	400	50	14.3%
	Cleared	24	21	31	25	26	32	27	27	27	27	27	149	221	72	48.3%
5. BURGLARY	38	47	53	33	53	39	31	36	36	36	36	36	338	330	-8	-2.4%
	Cleared	3	4	6	6	2	5	0	5	5	5	5	33	31	-2	-6.1%
6. LARCENY THEFT	189	165	181	175	207	136	197	216	216	216	216	216	1703	1466	-237	-13.9%
	Cleared	4	11	7	13	16	2	2	10	10	10	10	67	65	-2	-3.0%
7. AUTO THEFT	20	34	30	30	28	32	41	36	36	36	36	36	327	251	-76	-23.2%
	Cleared	2	2	2	1	0	3	2	2	2	2	2	25	14	-11	-44.0%
TOTAL INDEX CRIMES	305	298	332	302	361	276	330	361	361	361	361	361	2890	2565	-325	-11.2%
	Cleared	39	39	52	46	47	48	51	51	51	51	51	321	362	41	12.8%
TOTAL PERSON CRIMES	58	52	68	64	73	69	61	73	73	73	73	73	522	518	-4	-0.8%
	Cleared	30	22	37	26	29	38	36	34	34	34	34	201	252	51	25.4%
TOTAL PROPERTY CRIMES	247	246	264	238	288	207	269	288	288	288	288	288	2368	2047	-321	-13.6%
	Cleared	9	17	15	20	18	10	4	17	17	17	17	120	110	-10	-8.3%
ARSON	5	4	2	0	6	1	5	4	4	4	4	4	40	27	-13	-32.5%
Y-T-D Loss \$21,073	2	2	0	0	2	1	2	2	2	2	2	2	13	11	-2	-15.4%

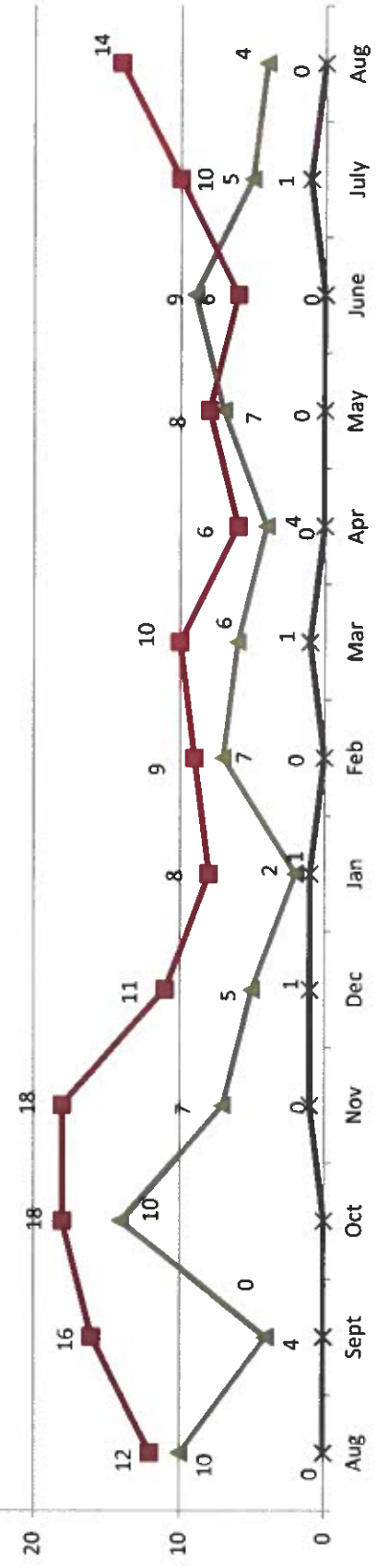
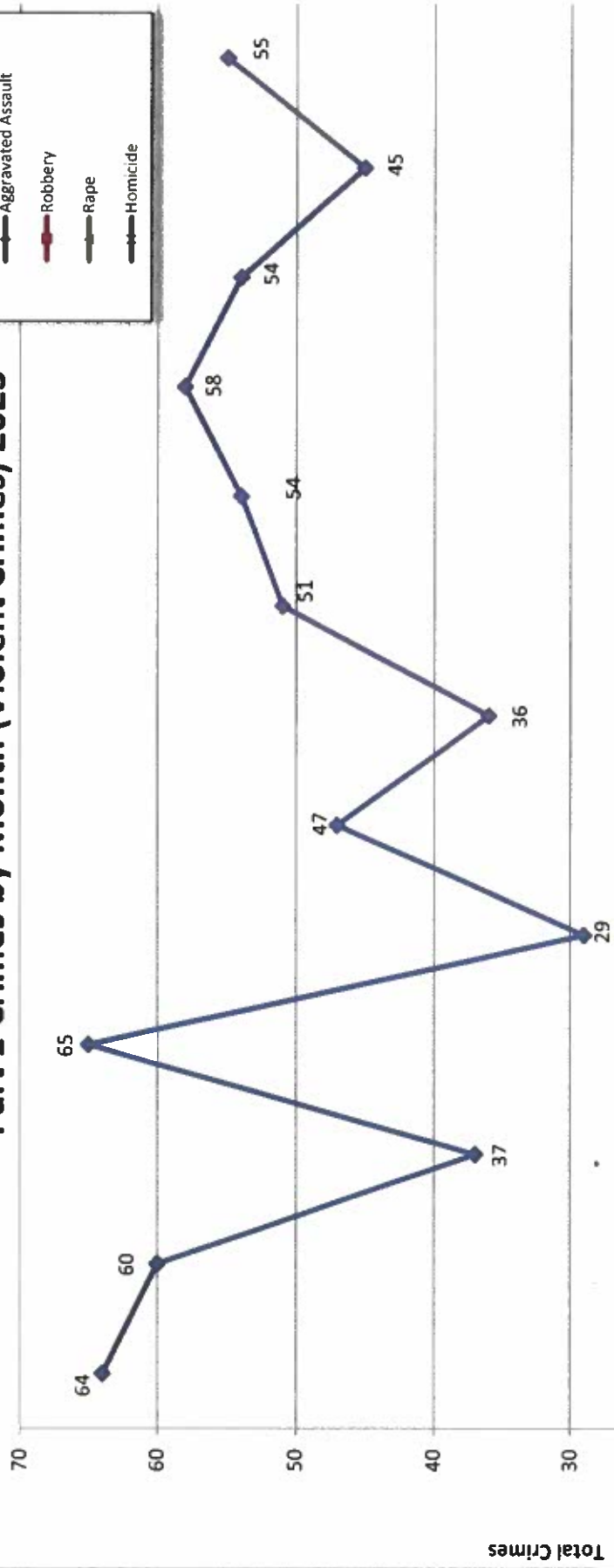
Part 1 Crimes by Month (Property Crimes) 2023



- 2023 -

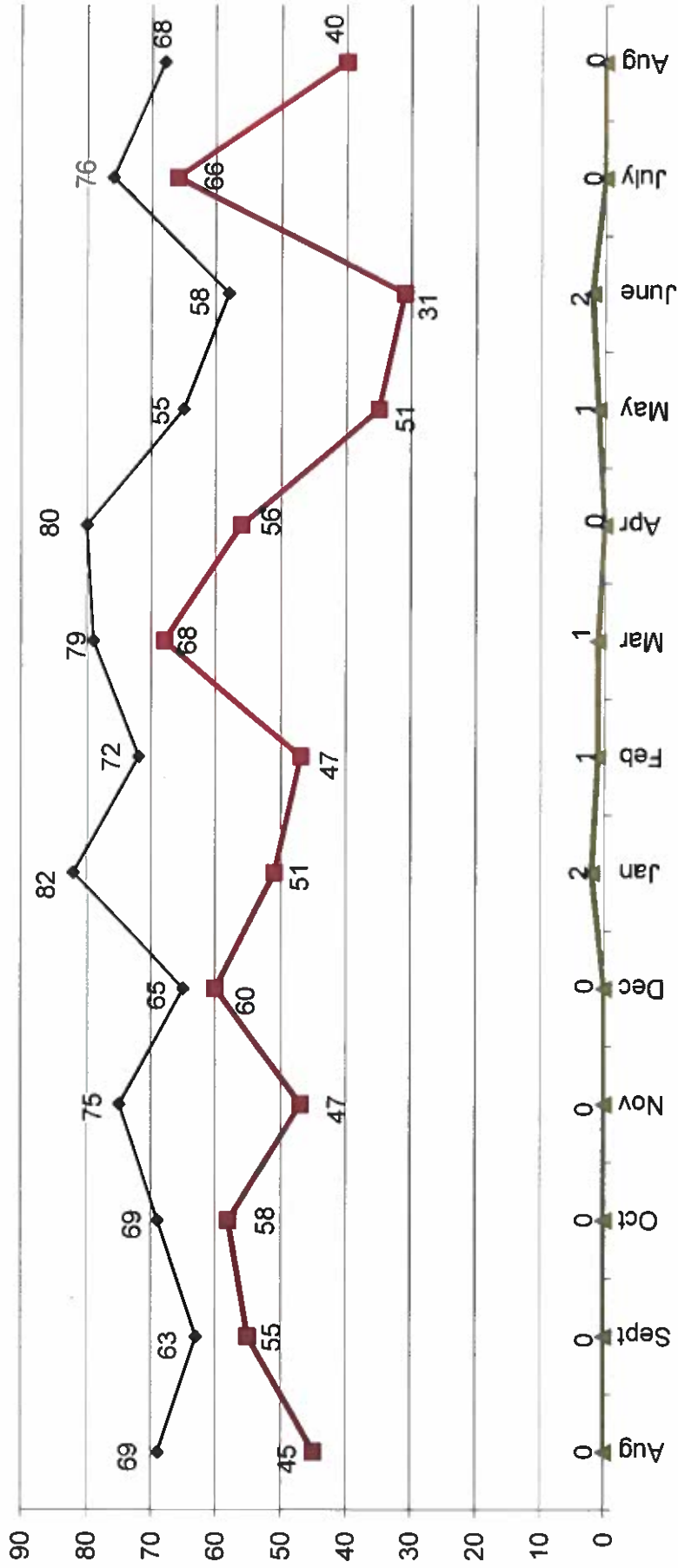
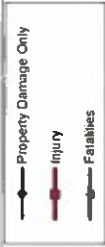
- 2022 -

Part 1 Crimes by Month (Violent Crimes) 2023



- 2022 - Month - 2023 -

Traffic Collisions 2023





UCR Crimes by GeoArea

Required Parameters
Reporting Period: Aug 2023
Agency: OCEANSIDE

Optional Parameters
Geographical Area: All Beats
Group by: Agency Select by: Neighborhood

Prior Report Number: S1STA120

Neighborhood	MURDER	RAPE	RAPE (HISTORICAL)	ROBBERY	ST/ ARM	ASSAULT	VIOLENT	BURGLARY	LARCENY	THEFT	M VEH	PROPERTY	CRIME	CAR
Agency = OCEANSIDE														
AIRPORT	0	1	1	0	0	1	2	0	3	3	8	11	2	16
EASTSIDE/CAPISTRANO	0	0	0	1	0	9	10	1	0	1	2	3	5	7
FIRE MOUNTAIN	0	0	0	1	0	3	4	0	1	1	12	10	2	25
GUAJOME	1	0	0	0	0	4	5	0	0	4	6	10	1	11
IVY RAN/RAN DEL ORO	0	1	0	0	0	4	5	2	3	5	7	12	5	22
LAKE	0	0	0	0	0	3	3	1	0	1	5	7	0	13
MIRA COSTA	0	0	0	0	0	0	0	-1	0	-1	9	7	6	21
MISSN MESALOMA ALTA	0	1	1	0	1	5	7	3	2	5	6	11	3	19
MORRO HILLS	0	0	0	0	0	5	5	0	0	0	0	1	2	3
NORTH VALLEY	0	0	0	0	0	1	1	3	0	3	3	1	4	7
OCEAN HILLS	0	1	1	0	0	1	2	0	0	0	1	0	0	1
OCEANA	0	0	0	2	0	1	3	1	0	1	2	3	5	6
SAN LUIS REY	0	0	0	0	1	4	5	2	3	5	18	22	8	53
SOUTH OCEANSIDE	0	0	0	0	0	1	1	3	1	4	4	4	8	13
TOWNSITE	0	0	0	1	6	12	19	5	2	7	25	24	4	60
TRI CITY	0	0	0	0	1	1	2	0	1	1	3	4	7	9
UNKNOWN	0	0	0	0	0	0	0	0	0	0	1	1	2	2
SUB-TOTAL	1	4	3	5	9	55	74	20	16	36	102	114	36	288
GRAND TOTALS	1	4	3	5	9	55	74	20	16	36	102	114	36	288



UCR Crimes by GeoArea

Required Parameters
 Reporting Period: Jan 2023 to Aug 2023
 Agency: OCEANSIDE

Optional Parameters
 Geographical Area: All Beats
 Group by: Agency **Select by: Neighborhood**

Prior Report Number: S1STA120

Neighborhood	MURDER	RAPE (HISTORICAL)	RAPE (HISTORICAL)	ROBBERY--	ARMED	ST/ ARM	ASSAULT	VIOLENT	-----BURGLARY-----	---LARCENY-THEFT---	TOTAL	\$400+	<\$400	TOTAL	THEFT	CRIM TL	IDX TL	CRIME	CAR	
Agency = OCEANSIDE																				
AIRPORT	1	1	1	1	0	1	7	10	3	20	23	16	18	34	9	66	76	22		
EASTSIDE/CAPISTRANO	0	4	4	4	3	0	27	34	7	4	11	19	20	39	13	63	97	18		
FIRE MOUNTAIN	0	1	1	1	3	2	26	32	8	29	37	94	125	219	17	273	305	59		
GUAJOME	1	1	1	1	-1	3	15	19	15	1	16	34	31	65	7	88	107	23		
IVY RAN/RAN DEL ORO	0	4	1	1	0	2	33	39	26	25	51	89	77	166	35	252	291	86		
LAKE	0	1	1	1	0	3	18	22	4	12	16	31	52	83	8	107	129	14		
MIRA COSTA	1	2	2	2	0	2	20	25	13	4	17	40	33	73	27	117	142	40		
MISSN MESALOMA ALTA	0	2	1	1	2	4	53	61	11	13	24	43	54	97	14	135	196	35		
MORRO HILLS	0	2	1	1	0	0	7	9	2	1	3	6	10	16	4	23	32	11		
NORTH VALLEY	0	4	3	3	1	2	20	27	9	1	10	25	21	46	5	61	88	26		
OCEAN HILLS	0	1	1	1	1	2	3	7	2	0	2	15	16	31	5	38	45	16		
OCEANA	0	0	0	0	2	0	4	6	10	1	11	9	23	32	5	48	54	12		
SAN LUIS REY	1	6	4	4	4	6	37	54	17	28	45	93	112	205	33	283	337	75		
SOUTH OCEANSIDE	0	3	1	1	0	2	9	14	13	4	17	32	26	58	16	91	105	26		
TOWNSITE	0	11	10	10	2	18	102	133	30	14	44	130	128	258	44	346	479	74		
TRI CITY	0	2	2	2	2	3	24	31	3	3	6	20	17	37	12	55	86	15		
UNKNOWN	0	-1	1	1	1	0	0	0	0	0	0	8	2	10	0	10	10	4		
SUB-TOTAL	4	44	33	33	20	50	405	523	173	160	333	704	765	1,469	254	2,056	2,579	556		
GRAND TOTALS	4	44	33	33	20	50	405	523	173	160	333	704	765	1,469	254	2,056	2,579	556		