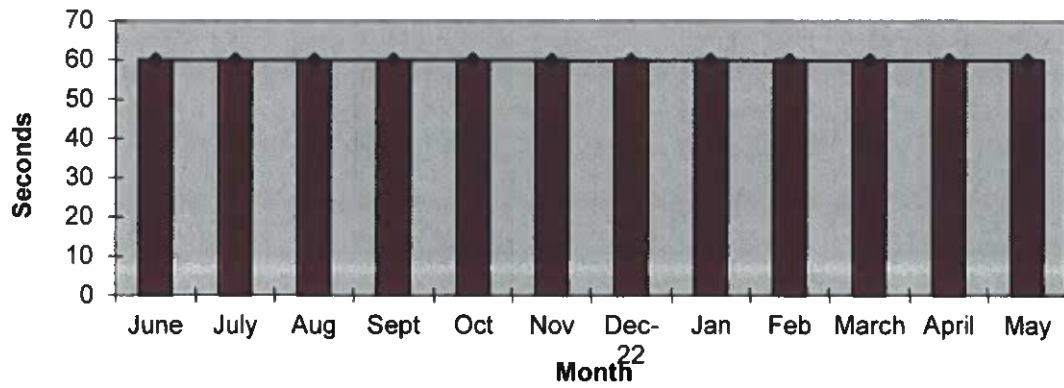
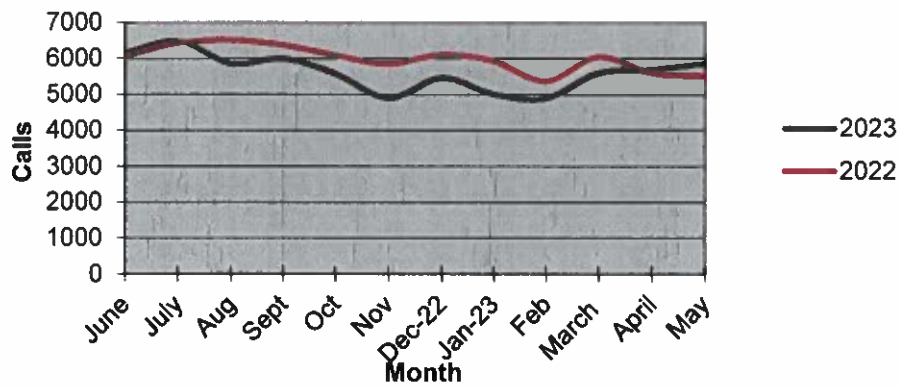


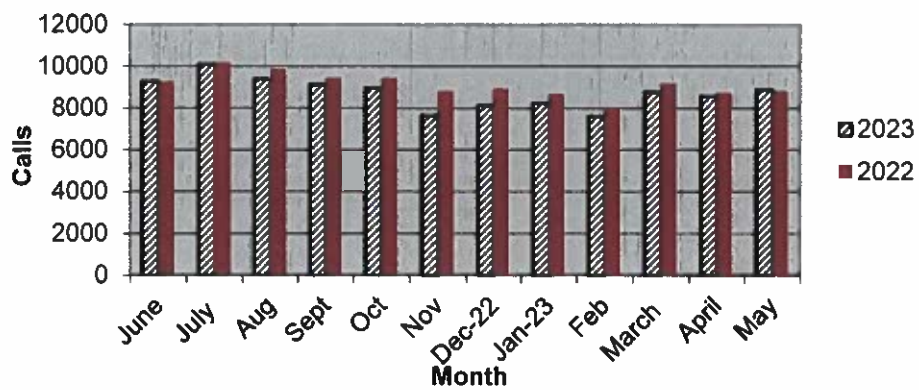
Priority 1 Dispatch Times- Police



911 Calls



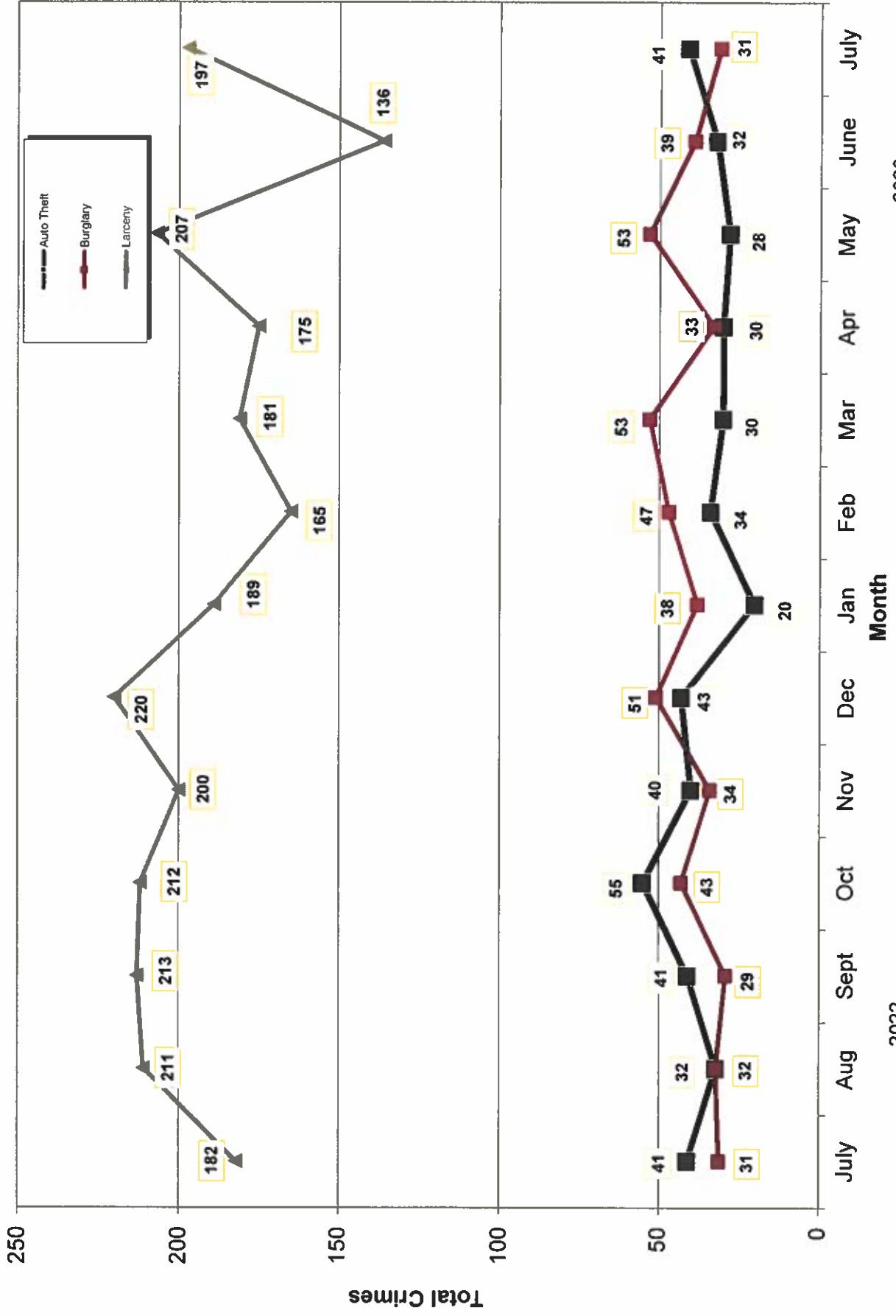
Calls for Service



**OCEANSIDE POLICE DEPARTMENT
FBI INDEX CRIMES**

		MONTHLY CASE ACTIVITY 2023												YEAR TO DATE COMPARISON		% CHANGE			
		JAN	FEB	MAR	APR	MAY	JUN	JUL	AUG	SEP	OCT	NOV	DEC	2022	2023				
		CHANGE	CHANGE	CHANGE	CHANGE	CHANGE	CHANGE	CHANGE	CHANGE	CHANGE	CHANGE	CHANGE	CHANGE	CHANGE	CHANGE				
1. HOMICIDE	Actual	1	0	1	0	0	0	1								5	3	-2	-40.0%
	Cleared	1	1	1	0	0	0	0								1	3	2	200.0%
2. RAPE	Actual	2	7	6	4	7	9	5								34	40	6	17.6%
	Cleared	0	0	1	0	1	3	0								5	5	0	0.0%
3. ROBBERY	Actual	8	9	10	6	8	6	10								122	57	-65	-53.3%
	Cleared	5	0	4	1	2	3	1								42	16	-26	-61.9%
4. AGGR. ASSAULT	Actual	47	36	51	54	58	54	45								300	345	45	15.0%
	Cleared	24	21	31	25	26	32	35								115	194	79	68.7%
5. BURGLARY	Actual	38	47	53	33	53	39	31								292	294	2	0.7%
	Cleared	3	4	6	6	2	5	0								33	26	-7	-21.2%
6. LARCENY THEFT	Actual	189	165	181	175	207	136	197								1463	1250	-213	-14.6%
	Cleared	4	11	7	13	16	2	2								58	55	-3	-5.2%
7. AUTO THEFT	Actual	20	34	30	30	28	32	41								286	215	-71	-24.8%
	Cleared	2	2	2	1	0	3	2								20	12	-8	-40.0%
TOTAL INDEX CRIMES	Actual	305	298	332	302	361	276	330								2502	2204	-298	-11.9%
	Cleared	39	39	52	46	47	48	40								269	311	42	15.6%
TOTAL PERSON CRIMES	Actual	58	52	68	64	73	69	61								461	445	-16	-3.5%
	Cleared	30	22	37	26	29	38	36								163	218	55	33.7%
TOTAL PROPERTY CRIMES	Actual	247	246	264	238	288	207	269								2041	1759	-282	-13.8%
	Cleared	9	17	15	20	18	10	4								106	93	-13	-12.3%
ARSON	Actual	5	4	2	0	6	1	5								36	23	-13	-36.1%
Y-T-D Loss \$17,572	Cleared	2	2	0	0	2	1	2								11	9	-2	-18.2%

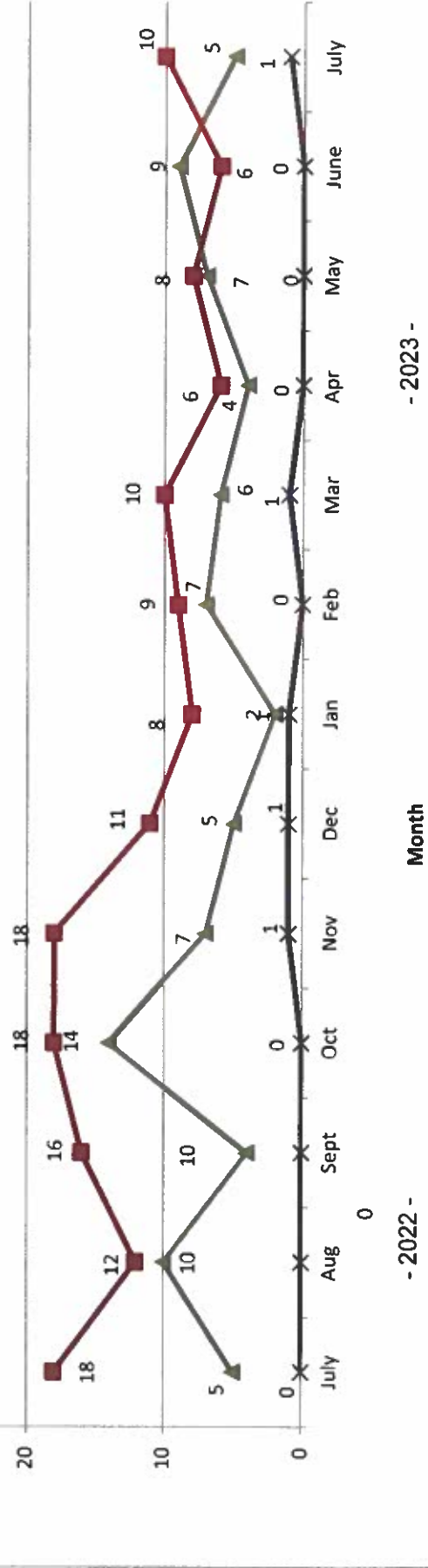
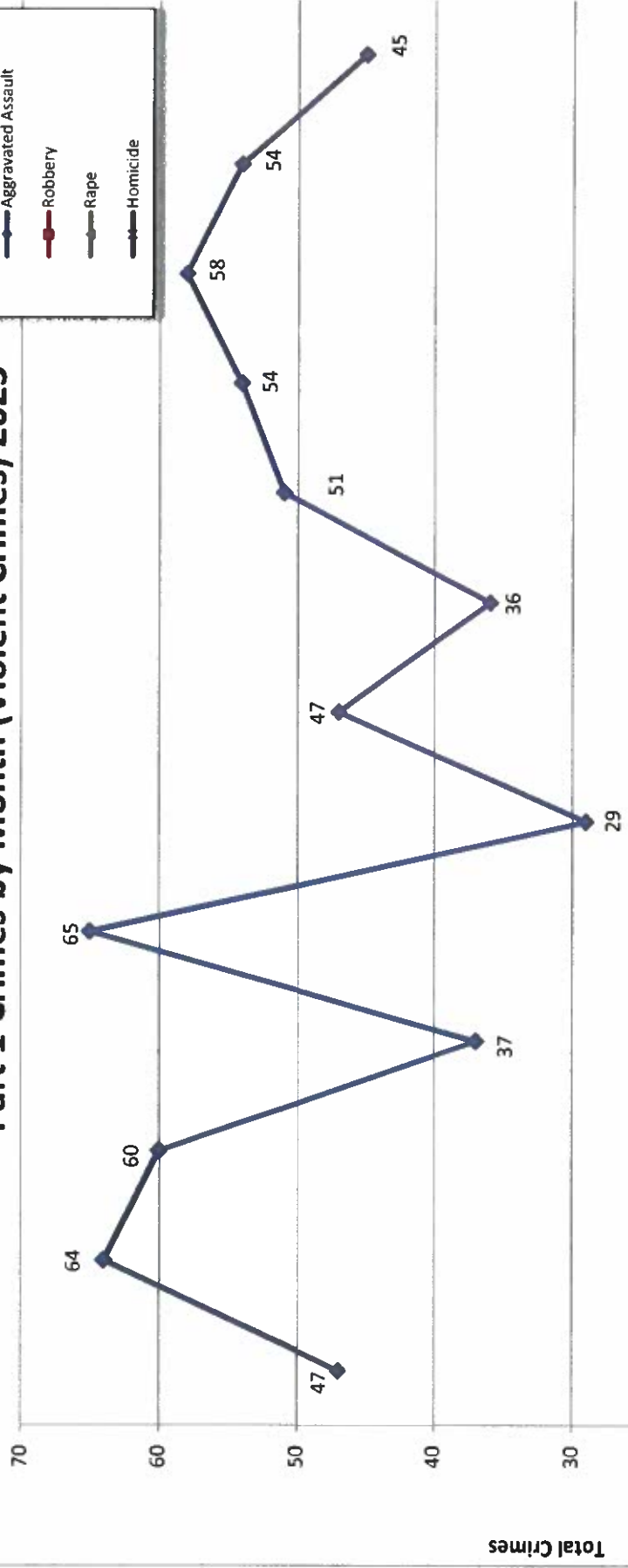
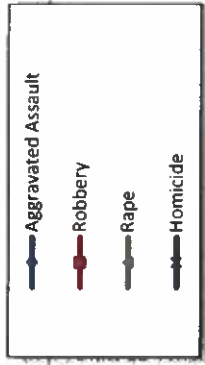
Part 1 Crimes by Month (Property Crimes) 2023



- 2022 -

- 2023 -

Part 1 Crimes by Month (Violent Crimes) 2023

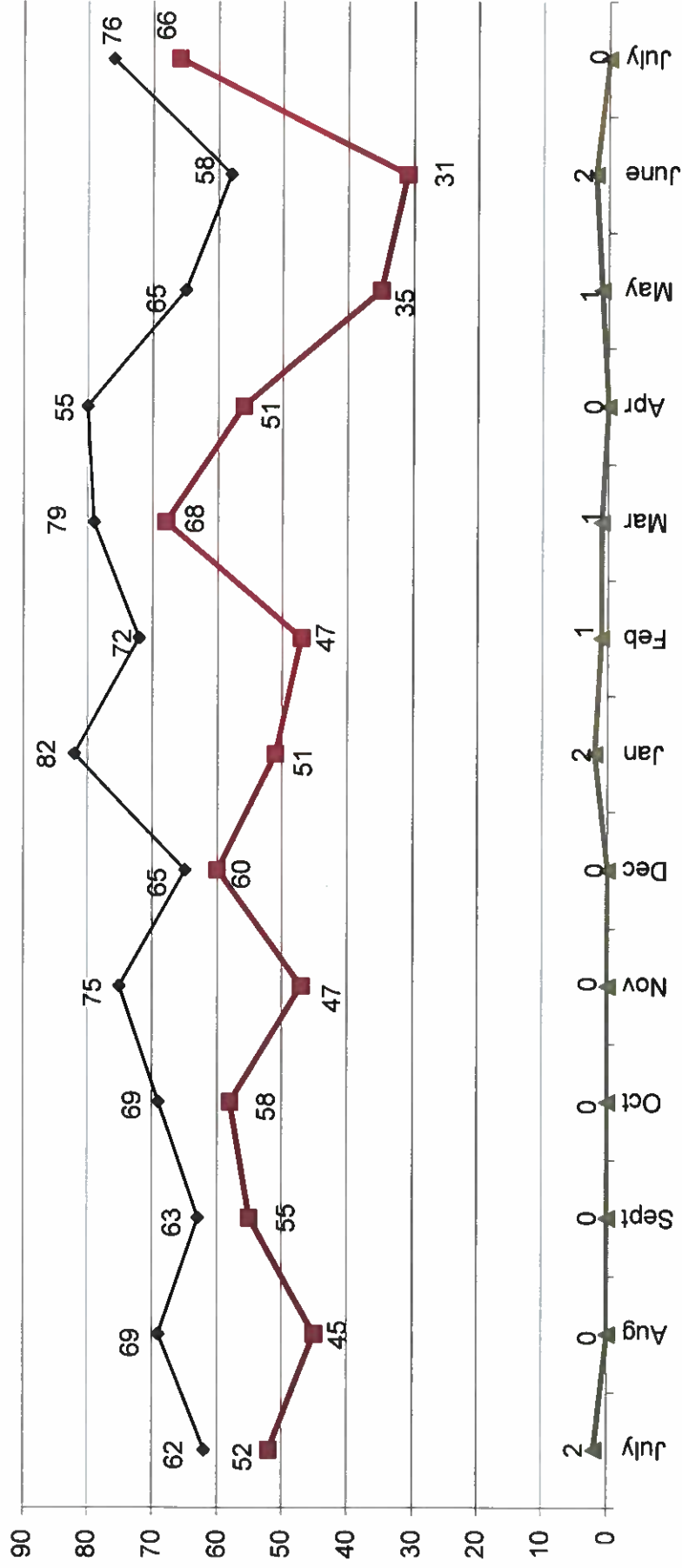


- 2022 -

Month

- 2023 -

Traffic Collisions 2023



-2023-

-2022-



UCR Crimes by GeoArea

Required Parameters
 Reporting Period: Jul 2023
 Agency: OCEANSIDE

Optional Parameters
 Geographical Area: All Beats
 Group by: Agency Select by: Neighborhood

Prior Report Number: S1STA120

Neighborhood	MURDER	RAPE	RAPE (HISTORICAL)	ROBBERY--	ST/ ARM	AGGRVD	VIOLENT	RESID	NRESID	TOTAL	\$400+	<\$400	TOTAL	THEFT	CRM TL	IDX TL	CRIME	CAR	
				ROBBERY--	ST/ ARM	AGGRVD	VIOLENT	RESID	NRESID	TOTAL	\$400+	<\$400	TOTAL	THEFT	CRM TL	IDX TL	CRIME	CAR	
Agency = OCEANSIDE																			
AIRPORT	0	-1	1	0	0	2	1	1	2	3	5	0	5	1	9	10	4		
EASTSIDE/CAPISTRANO	0	0	0	0	0	1	1	4	0	4	4	2	6	2	12	13	2		
FIRE MOUNTAIN	0	1	1	1	0	2	4	2	1	3	10	17	27	1	31	35	8		
GUAJOME	0	0	0	0	1	0	1	2	0	2	4	0	4	0	6	7	2		
IVY RANIRAN DEL ORO	0	0	0	0	0	3	3	0	2	2	11	10	21	5	28	31	14		
LAKE	0	0	0	0	0	0	0	0	2	2	4	7	11	-1	12	12	4		
MIRA COSTA	0	0	0	0	0	1	1	0	0	0	6	5	11	3	14	15	9		
MISSN MESALOMA ALTA	0	0	0	0	1	9	10	4	1	5	11	3	14	2	21	31	3		
MORRO HILLS	0	1	0	0	0	0	1	0	1	1	3	2	5	1	7	8	4		
NORTH VALLEY	0	0	0	0	0	0	0	0	1	1	4	5	9	1	11	11	7		
OCEAN HILLS	0	0	0	0	0	0	0	0	0	0	2	2	4	1	5	5	2		
OCEANA	0	0	0	0	0	0	0	0	0	0	0	0	0	0	0	0	0		
SAN LUIS REY	1	2	2	1	2	6	12	3	0	3	13	12	25	14	42	54	9		
SOUTH OCEANSIDE	0	0	0	0	0	0	0	1	0	1	0	8	8	2	11	11	3		
TOWNSITE	0	2	2	1	2	18	23	3	0	3	24	21	45	7	55	78	12		
TRI CITY	0	0	0	0	1	3	4	0	1	1	1	0	1	2	4	8	1		
UNKNOWN	0	0	0	0	0	0	0	0	0	0	1	0	1	0	1	1	1		
SUB-TOTAL	1	5	4	3	7	45	61	20	11	31	103	94	197	41	269	330	85		
GRAND TOTALS	1	5	4	3	7	45	61	20	11	31	103	94	197	41	269	330	85		



UCR Crimes by GeoArea

Required Parameters
 Reporting Period: Jan 2023 to Jul 2023
 Agency: OCEANSIDE

Optional Parameters
 Geographical Area: All Beats
 Group by: Agency Select by: Neighborhood

Prior Report Number: S1STA120

Neighborhood	MURDER	RAPE	RAPE (HISTORICAL)	ROBBERY--	ST/ ARM	AGGRVD	VIOLENT	BURGLARY	LARCENY-THEFT	TOTAL	\$400+	<\$400	TOTAL	THEFT	CRM TL	INDEX TL	CRIME	CAR
Agency = OCEANSIDE																		
AIRPORT	1	0	0	0	1	6	8	3	17	20	13	10	23	7	50	58	16	16
EASTSIDE/CAPISTRANO	0	4	4	2	0	18	24	6	4	10	17	17	34	12	56	80	16	16
FIRE MOUNTAIN	0	1	1	2	2	23	28	8	27	35	83	115	198	15	248	276	51	51
GUALJOME	0	1	1	-1	3	11	14	15	1	16	30	25	55	6	77	91	21	21
IVY RAN/RAN DEL ORO	0	3	1	0	2	30	35	24	22	46	84	70	154	30	230	265	80	80
LAKE	0	1	1	0	3	15	19	3	12	15	26	45	71	8	94	113	12	12
MIRA COSTA	1	2	2	0	2	20	25	14	4	18	31	26	57	21	96	121	32	32
MISSN MESALOMA ALTA	0	1	0	2	4	48	55	8	11	19	38	47	85	11	115	170	29	29
MORRO HILLS	0	2	1	0	0	2	4	2	1	3	6	9	15	2	20	24	10	10
NORTH VALLEY	0	4	3	1	2	19	26	6	1	7	22	20	42	5	54	80	26	26
OCEAN HILLS	0	0	0	1	2	2	5	2	0	2	14	16	30	5	37	42	16	16
OCEANA	0	0	0	0	0	3	3	9	1	10	7	20	27	5	42	45	11	11
SAN LUIS REY	1	6	4	4	5	33	49	15	25	40	75	90	165	25	230	279	61	61
SOUTH OCEANSIDE	0	3	1	0	2	8	13	10	3	13	28	22	50	15	78	91	23	23
TOWNSITE	0	11	10	1	12	89	113	25	12	37	105	104	209	40	286	399	64	64
TRI CITY	0	2	2	2	2	23	29	3	2	5	17	13	30	11	46	75	12	12
UNKNOWN	0	-1	1	1	0	0	0	0	0	0	7	1	8	0	8	8	4	4
SUB-TOTAL	3	40	30	15	42	350	450	153	143	296	603	650	1,253	218	1,767	2,217	484	484
GRAND TOTALS	3	40	30	15	42	350	450	153	143	296	603	650	1,253	218	1,767	2,217	484	484