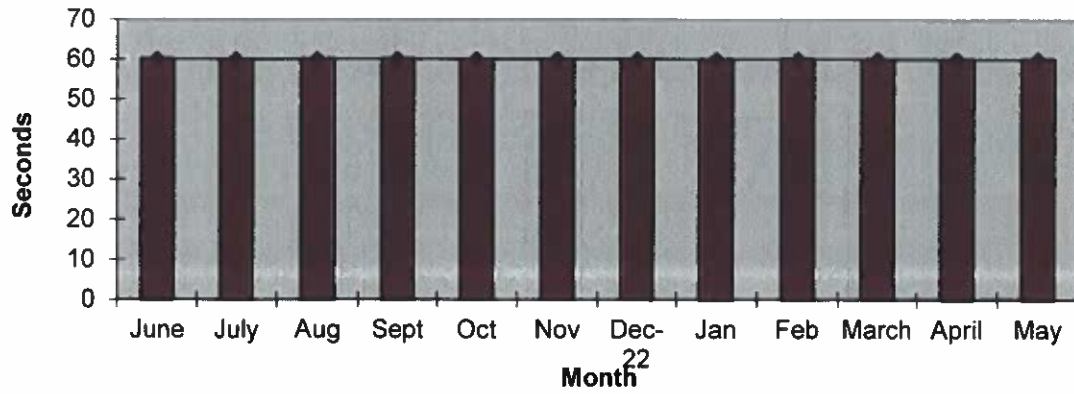
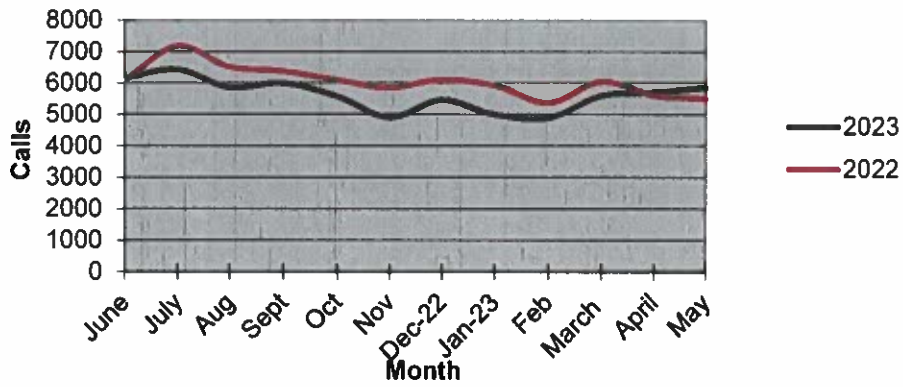


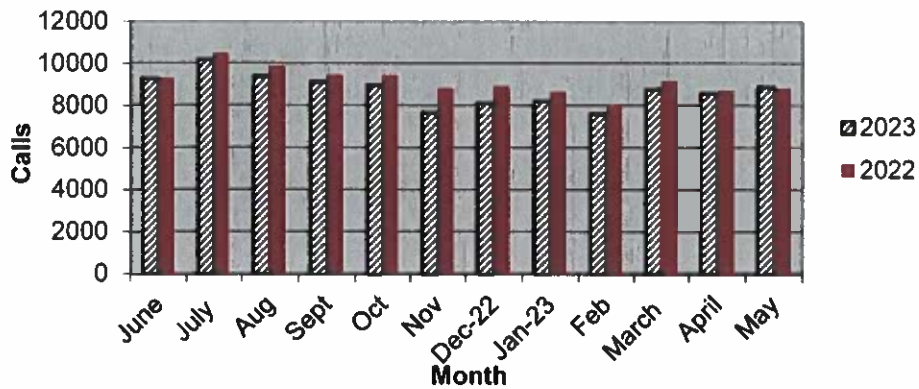
Priority 1 Dispatch Times- Police



911 Calls



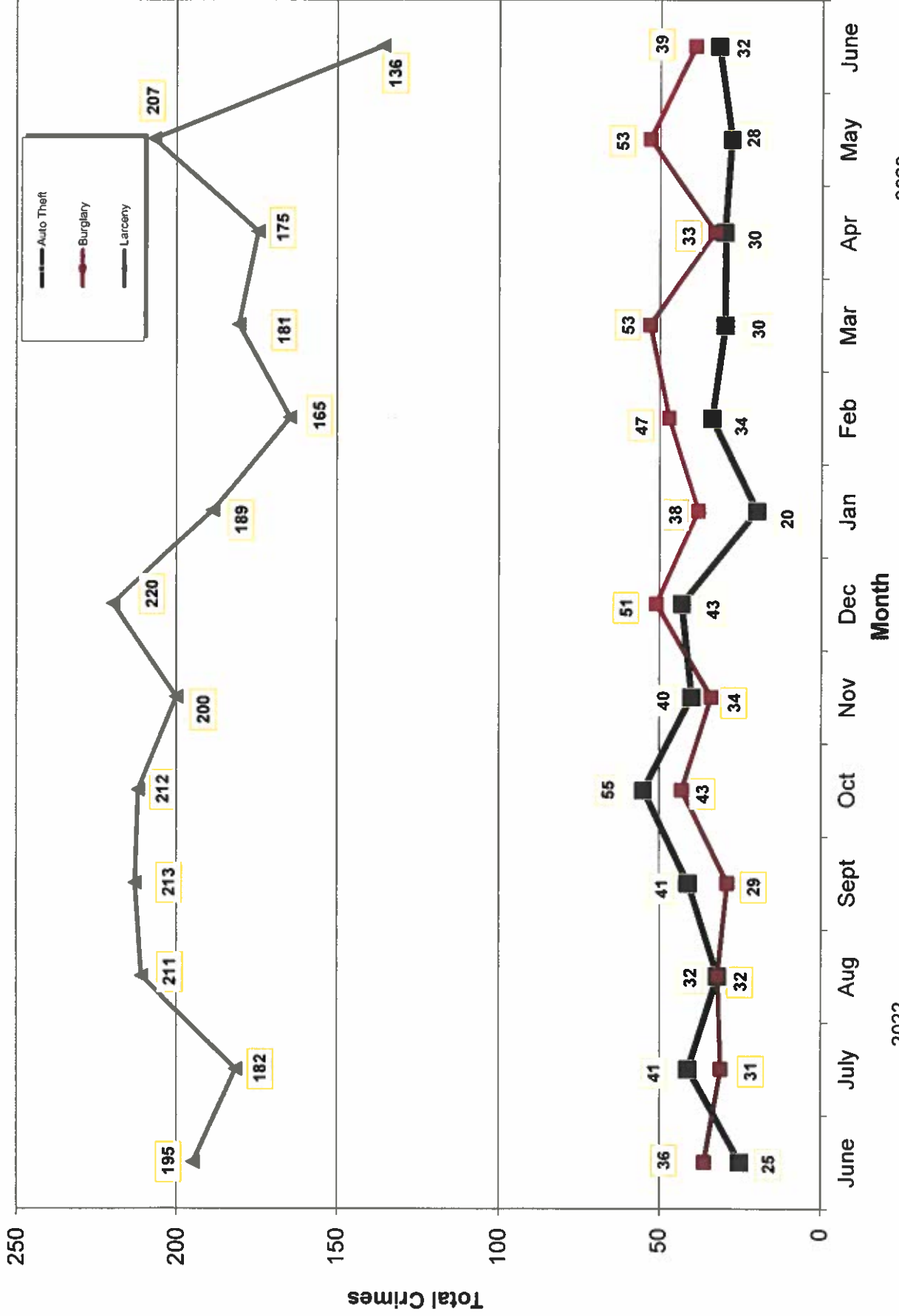
Calls for Service



**OCEANSIDE POLICE DEPARTMENT
FBI INDEX CRIMES**

	MONTHLY CASE ACTIVITY 2023												YEAR TO DATE COMPARISON		% CHANGE		
													2022	2023		CHANGE	
	JAN	FEB	MAR	APR	MAY	JUN	JUL	AUG	SEP	OCT	NOV	DEC					
1. HOMICIDE	Actual 1	0	1	0	0	0	0							5	2	-3	-60.0%
	Cleared 1	1	1	0	0	0								1	3	2	200.0%
2. RAPE	Actual 2	7	6	4	7	9								28	35	7	25.0%
	Cleared 0	0	1	0	1	3								5	5	0	800.0%
3. ROBBERY	Actual 8	9	10	6	8	6								103	47	-56	-54.4%
	Cleared 5	0	4	1	2	3								33	15	-18	-54.5%
4. AGGR. ASSAULT	Actual 47	36	51	54	58	54								241	300	59	24.5%
	Cleared 24	21	31	25	26	32								91	159	68	74.7%
5. BURGLARY	Actual 38	47	53	33	53	39								246	263	17	6.9%
	Cleared 3	4	6	6	2	5								25	26	1	4.0%
6. LARCENY THEFT	Actual 189	165	181	175	207	136								1271	1053	-218	-17.2%
	Cleared 4	11	7	13	16	2								47	53	6	12.8%
7. AUTO THEFT	Actual 20	34	30	30	28	32								245	174	-71	-29.0%
	Cleared 2	2	2	1	0	3								18	10	-8	-44.4%
TOTAL INDEX CRIMES	Actual 305	298	332	302	361	276								2139	1874	-265	-12.4%
	Cleared 39	39	52	46	47	48								215	271	56	26.0%
TOTAL PERSON CRIMES	Actual 58	52	68	64	73	69								377	384	7	1.9%
	Cleared 30	22	37	26	29	38								130	182	52	40.0%
TOTAL PROPERTY CRIMES	Actual 247	246	264	238	288	207								1762	1490	-272	-15.4%
	Cleared 9	17	15	20	18	10								85	89	4	4.7%
ARSON	Actual 5	4	2	0	6	1								29	18	-11	-37.9%
Y-T-D Loss \$16,471	Cleared 2	2	0	0	2	1								11	7	-4	-36.4%

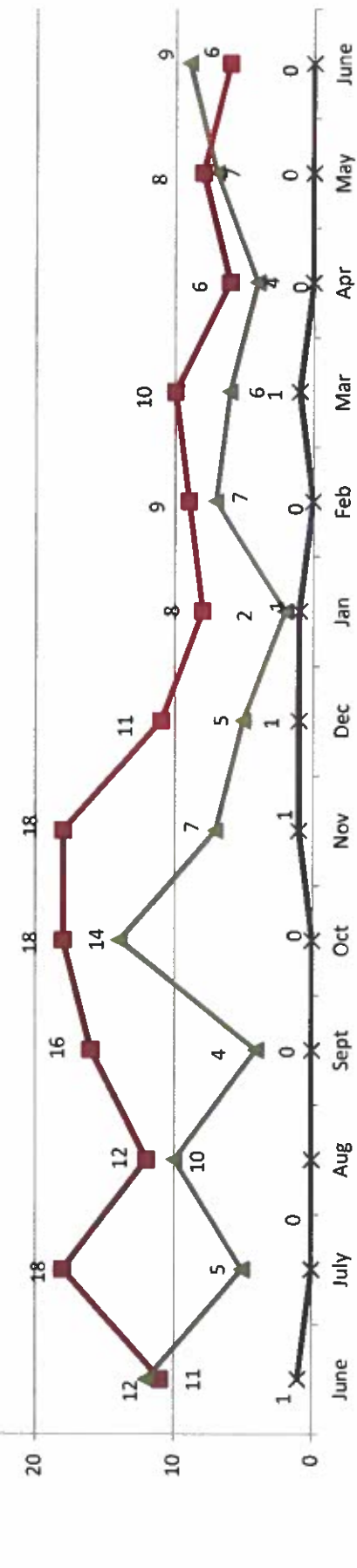
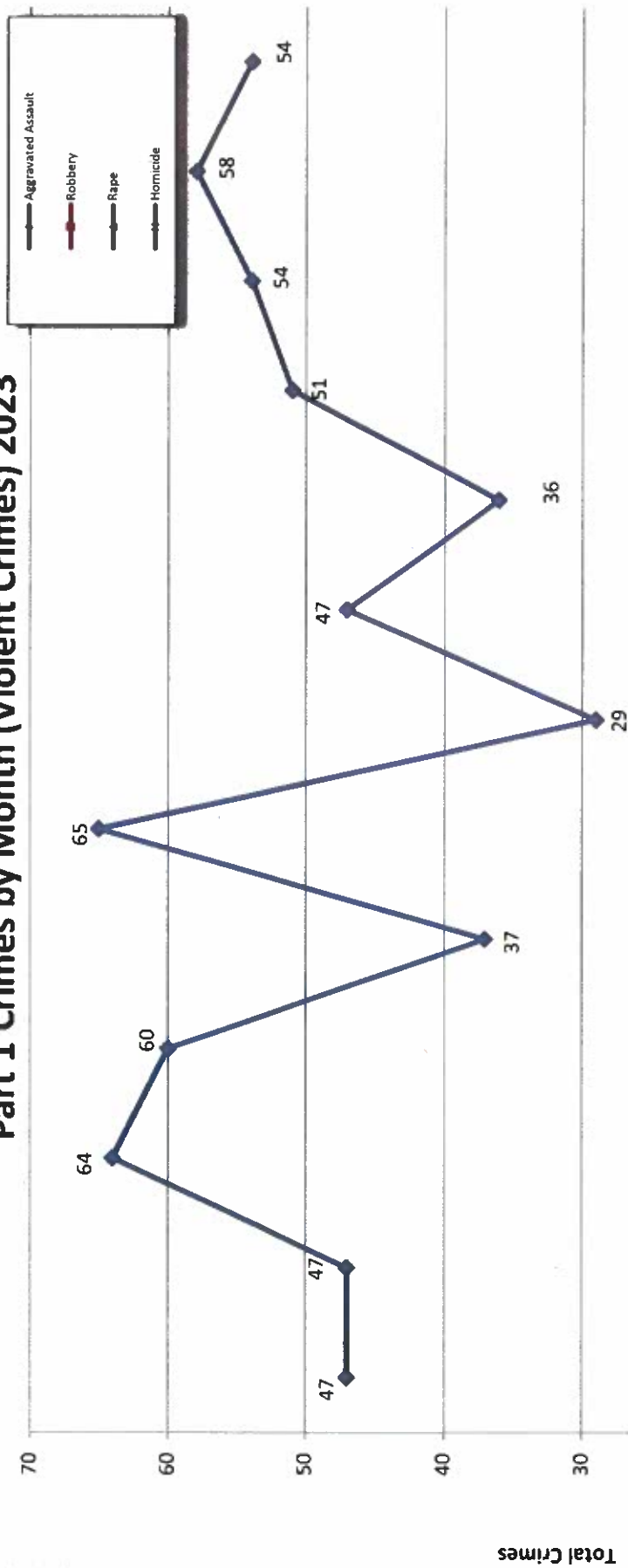
Part 1 Crimes by Month (Property Crimes) 2023



- 2023 -

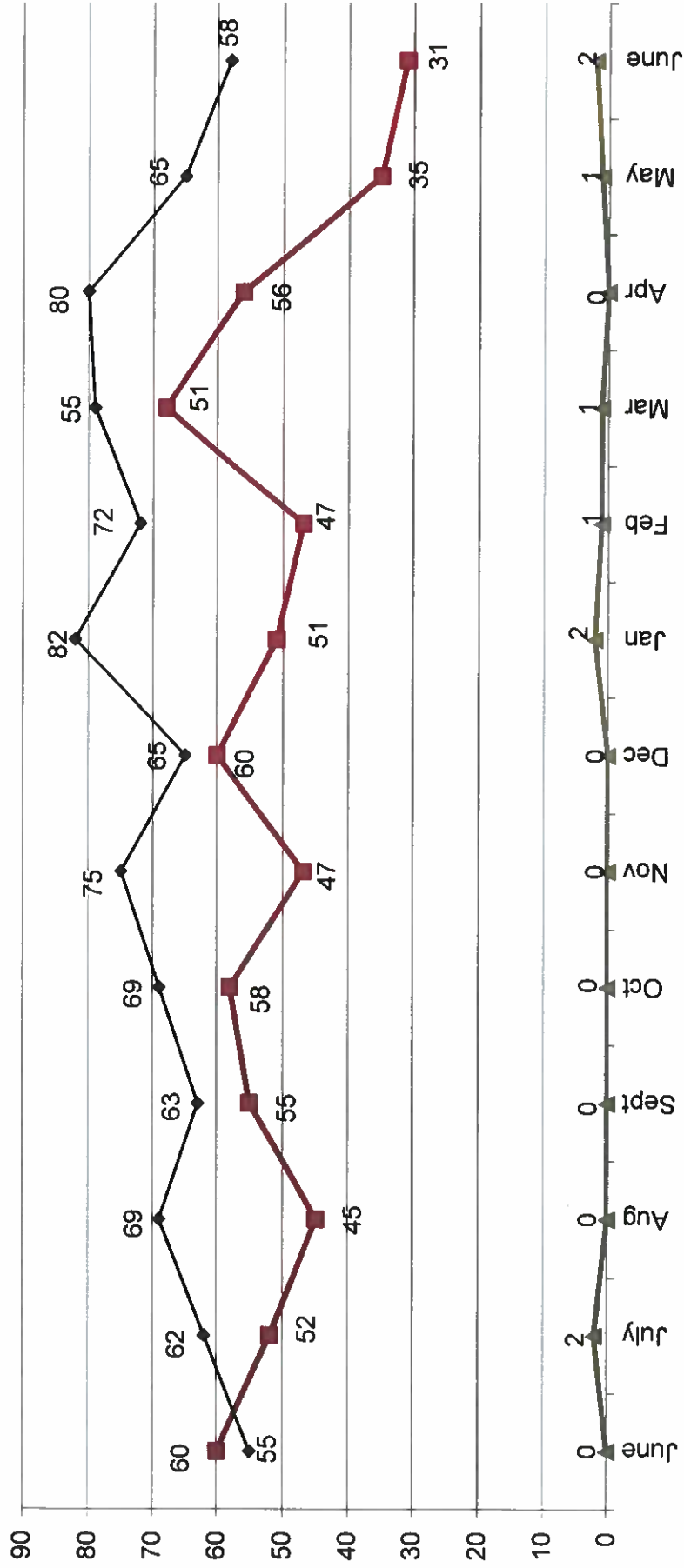
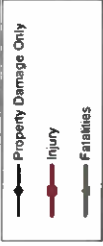
- 2022 -

Part 1 Crimes by Month (Violent Crimes) 2023



- 2022 - Month - 2023 -

Traffic Collisions 2023





UCR Crimes by GeoArea

Required Parameters
Reporting Period: Jun 2023
Agency: OCEANSIDE

Optional Parameters
Geographical Area: All Beats
Group by: Agency Select by: Neighborhood

Prior Report Number: S1STA120

Neighborhood	MURDER	RAPE	RAPE (HISTORICAL)	ROBBERY--	ARMED	ST/ ARM	ASSAULT	VIOLENT	AGGRVD	BURGLARY-----	LARCENY-THEFT--	M.VEH	PROPERTY	CRIME	CAR			
							CRM TL	RESID	NRESID	TOTAL	\$400+	<\$400	TOTAL	THEFT	CRM TL	IDX TL	PROWL	
Agency = OCEANSIDE																		
AIRPORT	0	0	0	0	0	0	0	0	0	2	2	0	0	1	1	4	4	1
EASTSIDE/CAPISTRANO	0	0	0	0	0	0	2	1	0	1	0	0	2	2	0	3	5	1
FIRE MOUNTAIN	0	0	0	0	1	0	2	0	4	4	4	6	14	20	3	27	29	4
GUAJOME	0	1	1	0	0	0	2	3	0	3	1	3	4	4	1	8	10	1
IVY RAN/RAN DEL ORO	0	0	0	0	0	0	4	1	4	5	11	8	19	5	29	33	6	
LAKE	0	0	0	0	0	0	3	0	3	3	2	7	9	1	13	16	1	
MIRA COSTA	0	0	0	0	1	0	5	2	2	4	5	0	5	5	14	19	2	
MISSN MESALOMA ALTA	0	0	0	0	0	0	4	0	2	2	3	4	7	2	11	15	4	
MORRO HILLS	0	0	0	0	0	0	0	0	0	0	0	1	1	0	1	1	0	
NORTH VALLEY	0	0	0	0	0	0	1	1	0	1	1	1	2	1	4	5	1	
OCEAN HILLS	0	0	0	0	0	0	0	2	0	2	2	3	5	2	9	9	5	
OCEANA	0	0	0	0	0	0	1	2	0	2	2	2	4	2	8	9	0	
SAN LUIS REY	0	2	0	0	1	0	3	6	1	3	4	7	3	10	2	16	22	6
SOUTH OCEANSIDE	0	2	0	0	1	0	3	6	2	1	3	6	3	9	2	14	20	4
TOWNSITE	0	3	3	0	2	0	21	26	0	3	3	17	17	34	5	42	68	11
TRI CITY	0	1	1	0	0	0	6	7	0	0	0	4	0	4	0	4	11	2
UNKNOWN	0	0	0	0	0	0	0	0	0	0	0	0	0	0	0	0	0	0
SUB-TOTAL	0	9	5	0	6	6	69	15	24	39	67	69	136	32	207	276	49	
GRAND TOTALS	0	9	5	0	6	6	69	15	24	39	67	69	136	32	207	276	49	



UCR Crimes by GeoArea

Required Parameters
 Reporting Period: Jan 2023 to Jun 2023
 Agency: OCEANSIDE

Optional Parameters
 Geographical Area: All Beats
 Group by: Agency Select by: Neighborhood

Prior Report Number: S1STA120

Neighborhood	MURDER	RAPE	RAPE (HISTORICAL)	ROBBERY--	ARMED	ST/ ARM	ASSAULT	VIOLENT	---BURGLARY---	---LARCENY-THEFT---	M.VEH	PROPERTY	CRIME	CAR					
								CRM TL	RESID	NRESID	TOTAL	\$400+	<\$400	TOTAL	THEFT	CRM TL	IDX TL	PROWL	
Agency - OCEANSIDE																			
AIRPORT	1	1	1	0	1	4	7	2	15	17	8	10	18	6	41	48	12		
EASTSIDE/CAPISTRANO	0	4	4	2	0	17	23	2	4	6	13	15	28	10	44	67	14		
FIRE MOUNTAIN	0	0	0	1	2	21	24	6	26	32	73	98	171	14	217	241	43		
GUAJOME	0	1	1	-1	2	11	13	13	1	14	26	25	51	6	71	84	19		
IVY RAN/RAN DEL ORO	0	3	1	0	2	27	32	24	20	44	73	60	133	25	202	234	66		
LAKE	0	1	1	0	3	15	19	3	10	13	22	38	60	9	82	101	8		
MIRA COSTA	1	2	2	0	2	19	24	14	4	18	25	21	46	18	82	106	23		
MISSIN MESALOMA ALTA	0	1	0	2	3	39	45	4	10	14	27	44	71	9	94	139	26		
MORRO HILLS	0	1	1	0	0	2	3	2	0	2	3	7	10	1	13	16	6		
NORTH VALLEY	0	4	3	1	2	19	26	6	0	6	18	15	33	4	43	69	19		
OCEAN HILLS	0	0	0	1	2	2	5	2	0	2	12	14	26	4	32	37	14		
OCEANA	0	0	0	0	0	3	3	9	1	10	7	20	27	5	42	45	11		
SAN LUIS REY	0	4	2	3	3	27	37	12	25	37	62	78	140	11	188	225	52		
SOUTH OCEANSIDE	0	3	1	0	2	8	13	9	3	12	28	14	42	13	67	80	20		
TOWNSITE	0	9	8	0	10	71	90	22	12	34	81	83	164	33	231	321	52		
TRI CITY	0	2	2	2	1	20	25	3	1	4	16	13	29	9	42	67	11		
UNKNOWN	0	-1	1	1	0	0	0	0	0	0	6	1	7	0	7	7	3		
SUB-TOTAL	2	35	26	12	35	305	389	133	132	265	500	556	1,056	177	1,486	1,867	399		
GRAND TOTALS	2	35	26	12	35	305	389	133	132	265	500	556	1,056	177	1,486	1,867	399		