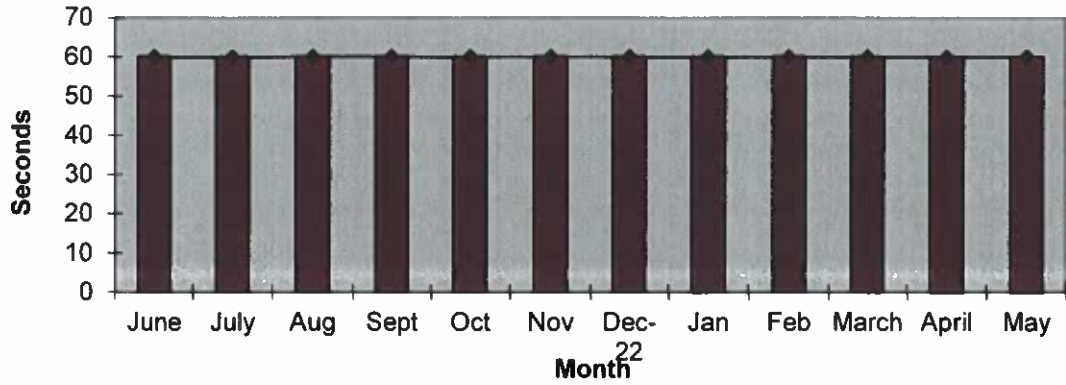
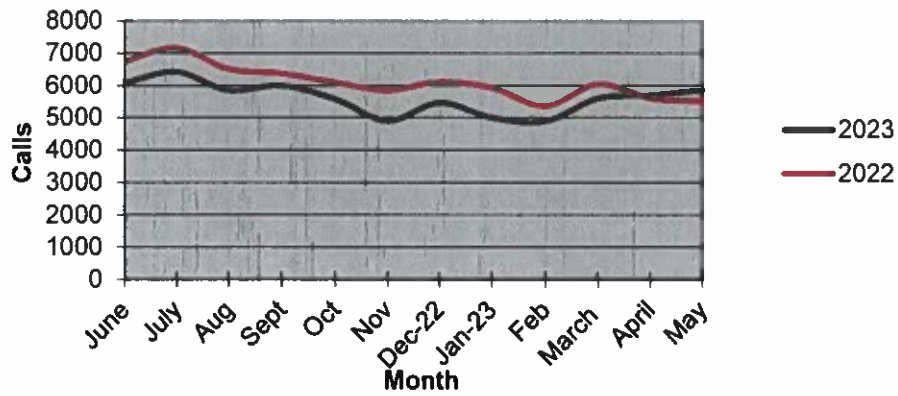


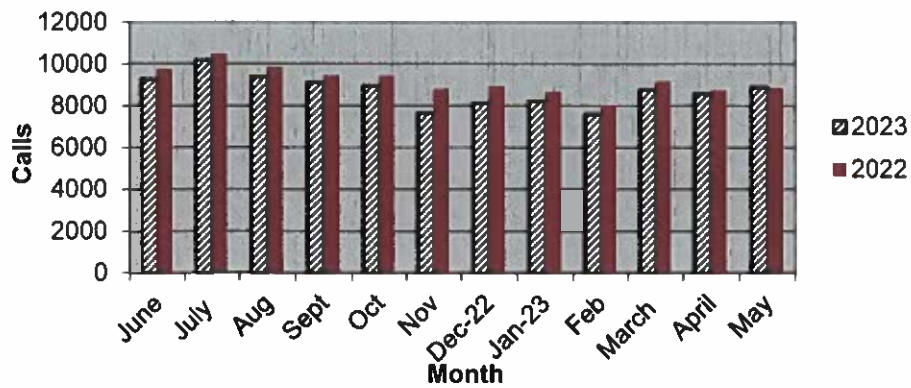
Priority 1 Dispatch Times- Police



911 Calls



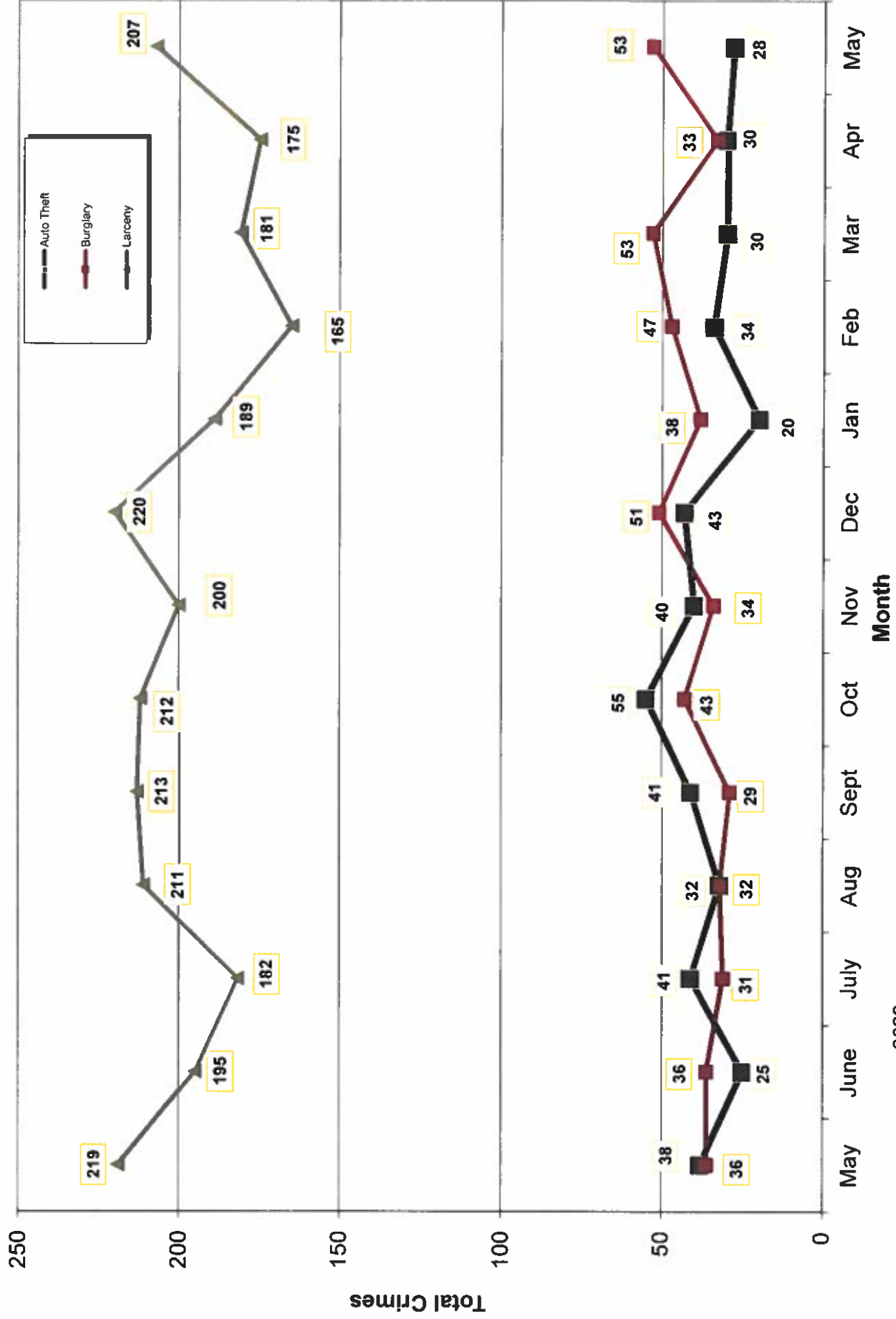
Calls for Service



**OCEANSIDE POLICE DEPARTMENT
FBI INDEX CRIMES**

		MONTHLY CASE ACTIVITY 2023												YEAR TO DATE		% CHANGE		
														COMPARISON				
		JAN	FEB	MAR	APR	MAY	JUN	JUL	AUG	SEP	OCT	NOV	DEC	2022	2023		CHANGE	
1. HOMICIDE	Actual	1	0	1	0	0									3	2	-1	-33.3%
	Cleared	1	1	1	0	0									1	3	2	200.0%
2. RAPE	Actual	2	7	6	4	7									24	26	2	8.3%
	Cleared	0	0	1	0	1									5	2	-3	-60.0%
3. ROBBERY	Actual	8	9	10	6	8									83	41	-42	-50.6%
	Cleared	5	0	4	1	2									26	12	-14	-53.8%
4. AGGR. ASSAULT	Actual	47	36	51	54	58									199	246	47	23.6%
	Cleared	24	21	31	25	26									76	127	51	67.1%
5. BURGLARY	Actual	38	47	53	33	53									198	224	26	13.1%
	Cleared	3	4	6	6	2									19	21	2	10.5%
6. LARCENY THEFT	Actual	189	165	181	175	207									1048	917	-131	-12.5%
	Cleared	4	11	7	13	16									38	51	13	34.2%
7. AUTO THEFT	Actual	20	34	30	30	28									205	142	-63	-30.7%
	Cleared	2	2	2	1	0									13	7	-6	-46.2%
TOTAL INDEX CRIMES	Actual	305	298	332	302	361									1760	1598	-162	-9.2%
	Cleared	39	39	52	46	47									173	223	50	28.9%
TOTAL PERSON CRIMES	Actual	58	52	68	64	73									3019	315	-2704	-89.6%
	Cleared	30	22	37	26	29									108	144	36	33.3%
TOTAL PROPERTY CRIMES	Actual	247	246	264	238	288									1451	1283	-168	-11.6%
	Cleared	9	17	15	20	18									65	79	14	21.5%
ARSON	Actual	5	4	2	0	6									27	17	-10	-37.0%
Y-T-D Loss \$16,470	Cleared	2	2	0	0	2									11	6	-5	-45.5%

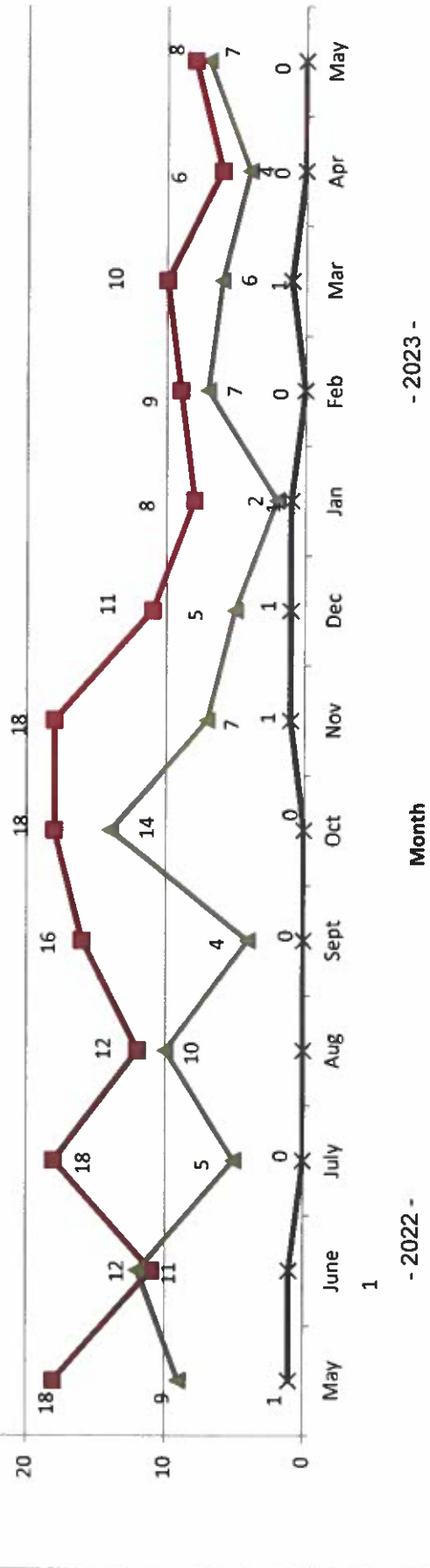
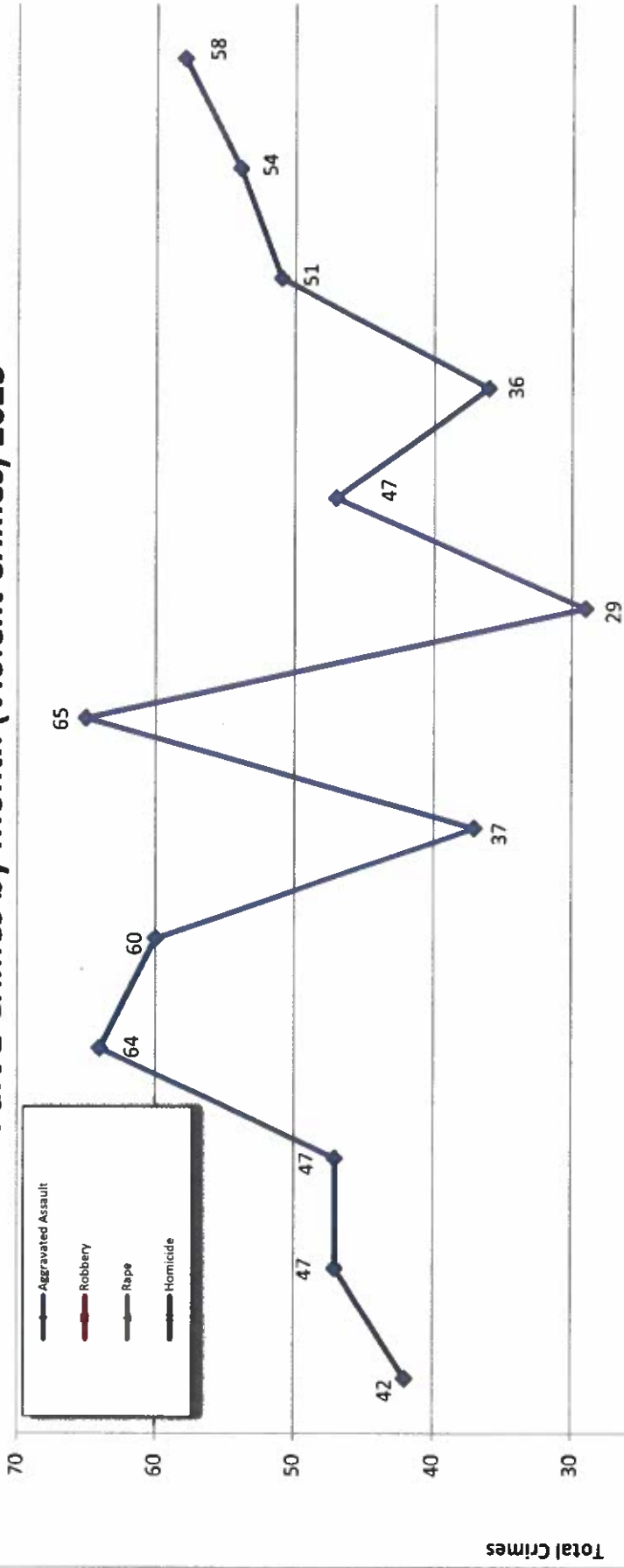
Part 1 Crimes by Month (Property Crimes) 2023



- 2023 -

- 2022 -

Part 1 Crimes by Month (Violent Crimes) 2023

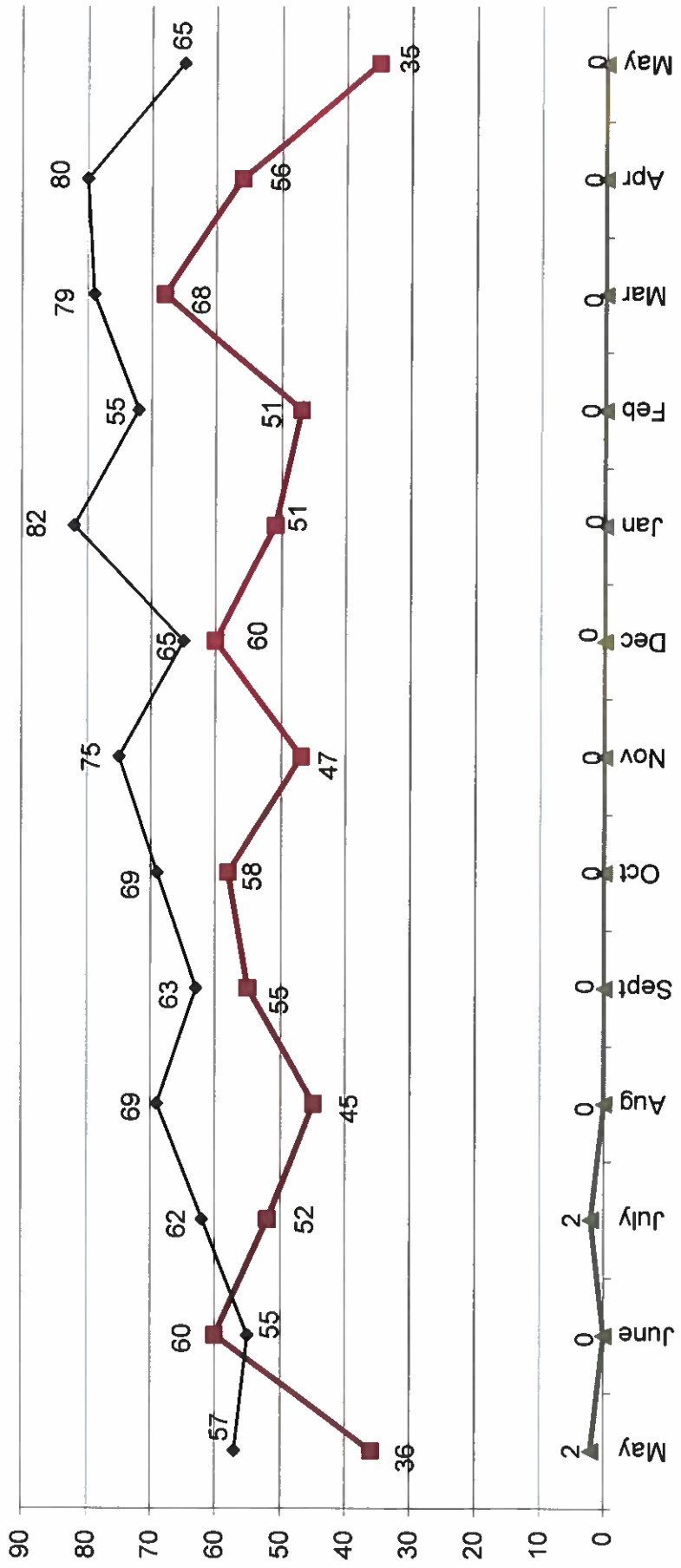


- 2023 -

Month

- 2022 -

Traffic Collisions 2023





UCR Crimes by GeoArea

Required Parameters
 Reporting Period: May 2023
 Agency: OCEANSIDE

Optional Parameters
 Geographical Area: All Beats
 Group by: Agency **Select by: Neighborhood**

Prior Report Number: S1STA120

Neighborhood	MURDER	RAPE	RAPE (HISTORICAL)	ROBBERY--	AGGRVD	VIOLENT	RESID	NRESID	TOTAL	\$400+	<\$400	TOTAL	THEFT	CRM TL	IDX TL	CRIME	CAR
			RAPE (HISTORICAL)	ROBBERY--	AGGRVD	VIOLENT	RESID	NRESID	TOTAL	\$400+	<\$400	TOTAL	THEFT	CRM TL	IDX TL	CRIME	CAR
Agency = OCEANSIDE																	
AIRPORT	0	0	0	0	0	2	1	4	5	1	1	2	2	2	9	11	0
EASTSIDE/CAPISTRANO	0	1	0	0	0	3	4	0	1	5	3	8	1	10	14	2	2
FIRE MOUNTAIN	0	0	0	0	0	1	1	6	7	14	15	29	1	37	38	3	3
GUAJOME	0	0	0	0	0	1	2	0	1	3	6	9	2	12	14	4	4
IVY RAN/RAN DEL ORO	0	0	0	0	0	7	5	3	8	13	13	26	4	38	45	12	12
LAKE	0	0	0	0	-1	3	2	0	0	4	13	17	0	17	19	3	3
MIRA COSTA	0	0	0	0	0	0	1	4	4	1	3	4	2	10	11	2	2
MISSN MESALOMA ALTA	0	1	0	0	2	14	17	2	3	8	12	20	2	25	42	4	4
MORRO HILLS	0	1	0	0	0	0	1	2	2	1	0	1	0	3	4	0	0
NORTH VALLEY	0	1	0	0	0	2	3	0	1	5	3	8	0	9	12	3	3
OCEAN HILLS	0	0	0	0	0	1	1	0	0	2	3	5	1	6	7	3	3
OCEANA	0	0	0	0	0	0	0	0	0	4	2	6	2	8	8	0	0
SAN LUIS REY	0	1	1	1	1	5	8	5	13	12	15	27	2	42	50	8	8
SOUTH OCEANSIDE	0	0	0	0	0	4	1	0	1	5	0	5	1	7	11	1	1
TOWNSITE	0	2	2	0	2	12	16	1	7	14	16	30	4	41	57	9	9
TRI CITY	0	0	0	1	0	3	4	0	0	5	2	7	4	11	15	2	2
UNKNOWN	0	0	0	0	0	0	0	0	0	3	0	3	0	3	3	1	1
SUB-TOTAL	0	7	6	2	6	58	73	25	53	100	107	207	28	288	361	57	57
GRAND TOTALS	0	7	6	2	6	58	73	25	53	100	107	207	28	288	361	57	57



UCR Crimes by GeoArea

Required Parameters

Reporting Period: Jan 2023 to May 2023

Agency: OCEANSIDE

Optional Parameters

Geographical Area: All Beats

Group by: Agency Select by: Neighborhood

Prior Report Number: S1STA120

Neighborhood	MURDER	RAPE (HISTORICAL)	RAPE	ROBBERY--	RAPE (HISTORICAL)	ARMED	ST/ ARM	ASSAULT	VIOLENT	RESID	NRESID	TOTAL	\$400+	<\$400	TOTAL	M.VEH	PROPERTY	CRIME	CAR	
Agency = OCEANSIDE																				
AIRPORT	1	1	1	0	1	4	7	2	13	15	8	9	17	5	37	44	11			
EASTSIDE/CAPISTRANO	0	4	4	2	0	15	21	1	4	5	13	13	26	10	41	62	13			
FIRE MOUNTAIN	0	0	0	1	1	20	22	6	22	28	67	84	151	11	190	212	39			
GUALOME	0	0	0	1	2	10	11	10	1	11	25	22	47	5	63	74	18			
IVY RAN/RAN DEL ORO	0	3	3	1	0	23	28	23	16	39	62	52	114	20	173	201	60			
LAKE	0	1	1	0	3	12	16	3	7	10	20	31	51	8	69	85	7			
MIRA COSTA	1	2	2	0	1	15	19	12	2	14	20	21	41	13	68	87	21			
MISSN MESA/LOMA ALTA	0	1	1	0	2	35	41	4	8	12	24	40	64	7	83	124	22			
MORRO HILLS	0	1	1	0	0	2	3	2	0	2	3	6	9	1	12	15	6			
NORTH VALLEY	0	4	4	3	1	18	25	5	0	5	17	14	31	3	39	64	18			
OCEAN HILLS	0	0	0	1	2	2	5	0	0	0	10	11	21	2	23	28	9			
OCEANA	0	0	0	0	0	2	2	7	1	8	5	18	23	3	34	36	11			
SAN LUIS REY	0	2	2	3	2	24	31	11	22	33	55	75	130	9	172	203	46			
SOUTH OCEANSIDE	0	1	1	0	1	5	7	7	2	9	22	11	33	11	53	60	16			
TOWNSITE	0	6	6	5	0	50	64	22	9	31	64	66	130	28	189	253	41			
TRI CITY	0	1	1	2	1	14	18	3	1	4	12	13	25	9	38	56	9			
UNKNOWN	0	-1	-1	1	0	0	0	0	0	0	6	1	7	0	7	7	3			
SUB-TOTAL	2	26	21	12	29	251	320	118	108	226	433	487	920	145	1,291	1,611	350			
GRAND TOTALS	2	26	21	12	29	251	320	118	108	226	433	487	920	145	1,291	1,611	350			