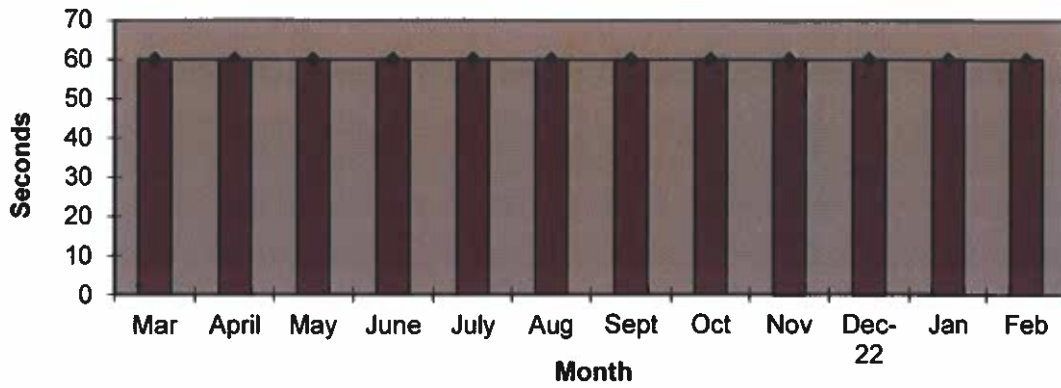
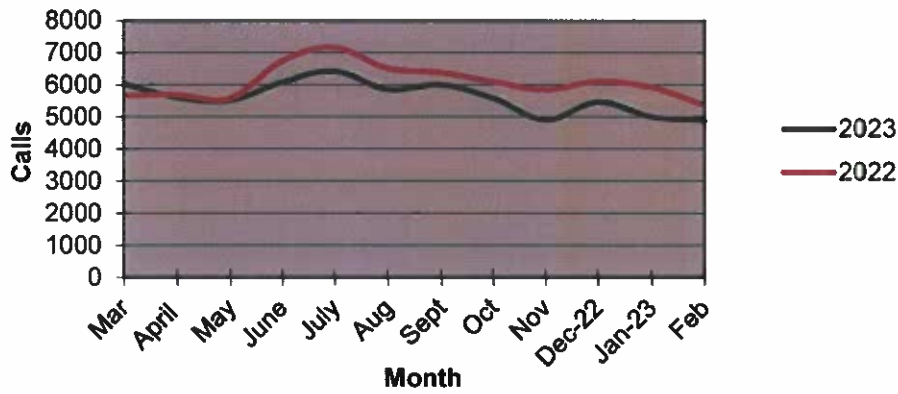


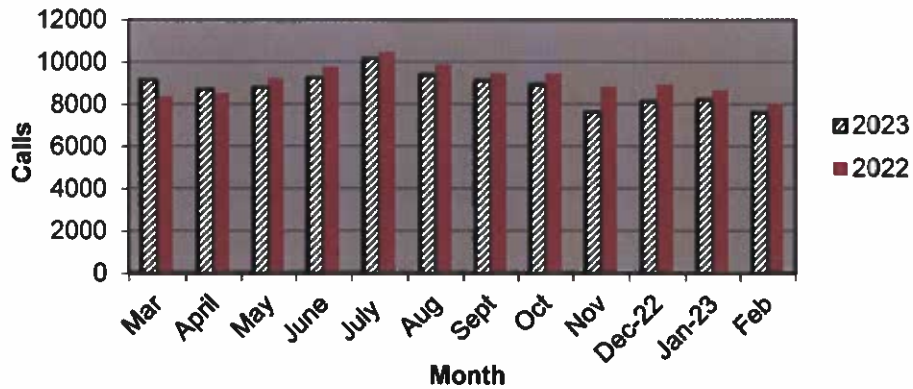
Priority 1 Dispatch Times- Police



911 Calls



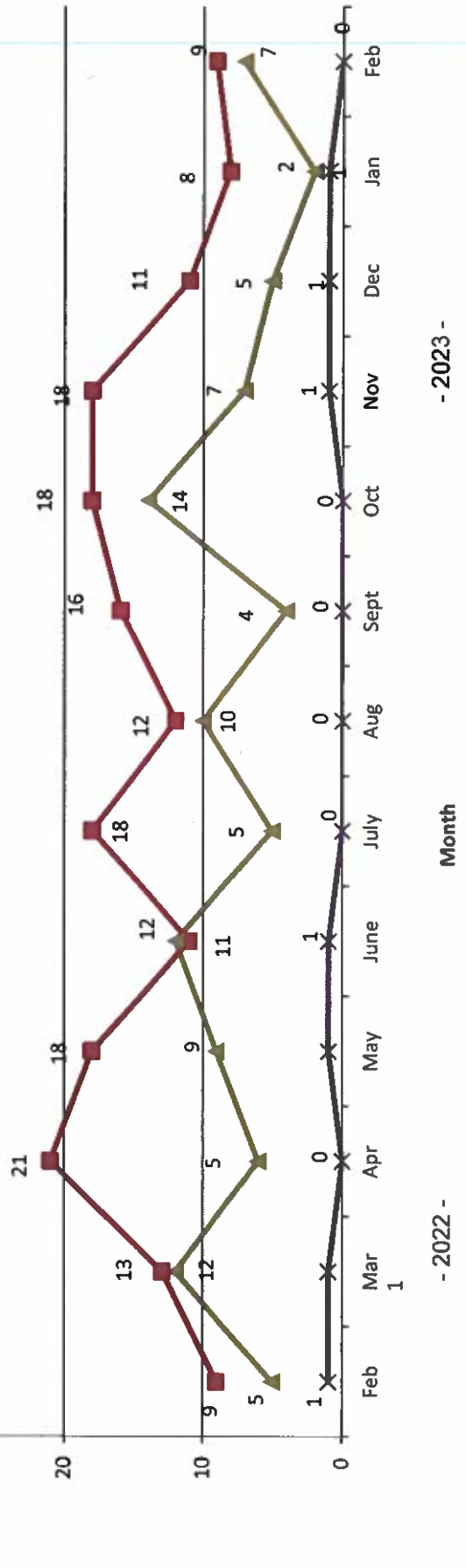
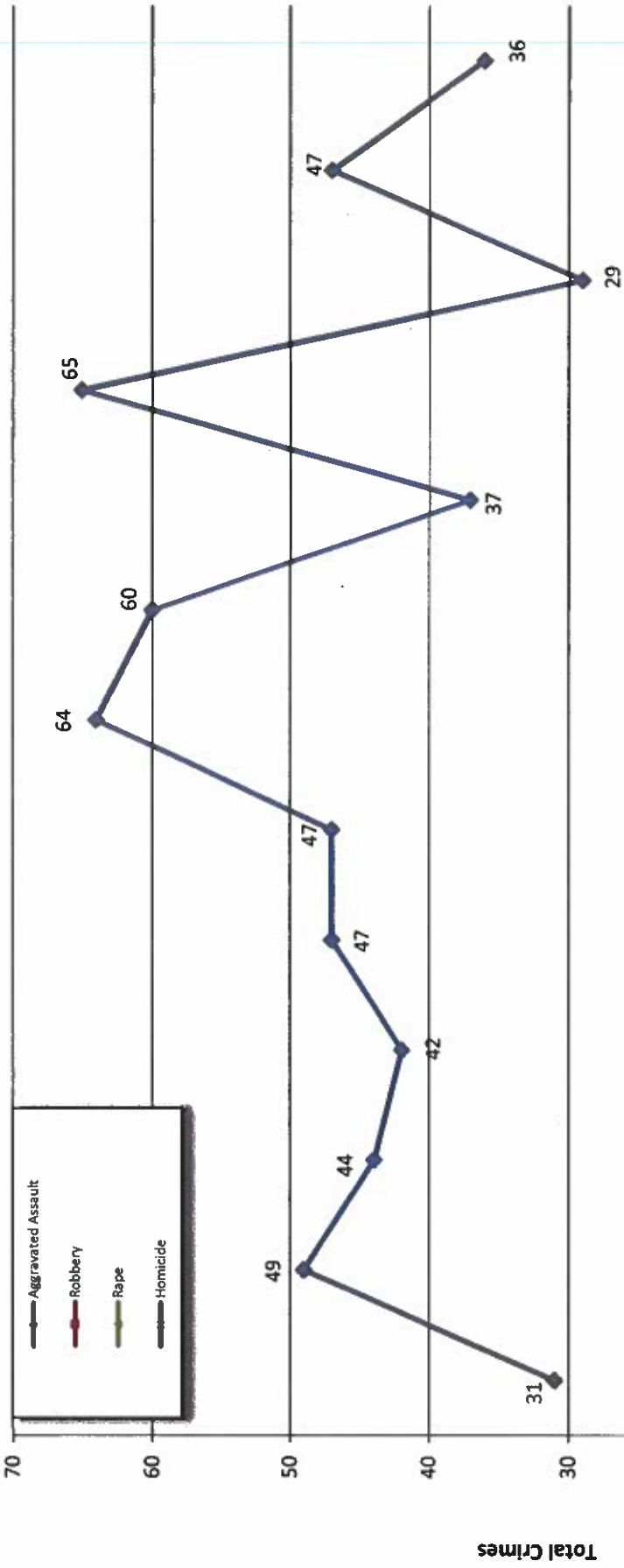
Calls for Service



**OCEANSIDE POLICE DEPARTMENT
FBI INDEX CRIMES**

		MONTHLY CASE ACTIVITY 2023												YEAR TO DATE		% CHANGE		
														COMPARISON				
		JAN	FEB	MAR	APR	MAY	JUN	JUL	AUG	SEP	OCT	NOV	DEC	2022	2023			
1. HOMICIDE	Actual	1	0												2	1	-1	-50.0%
	Cleared	1	1												0	2	2	200.0%
2. RAPE	Actual	2	7												10	9	-1	-10.0%
	Cleared	0	0												2	0	-2	-200.0%
3. ROBBERY	Actual	8	9												30	17	-13	-43.3%
	Cleared	5	0												8	5	-3	-37.5%
4. AGGR. ASSAULT	Actual	47	36												79	83	4	5.1%
	Cleared	24	21												33	45	12	36.4%
5. BURGLARY	Actual	38	47												82	85	3	3.7%
	Cleared	3	4												4	7	3	75.0%
6. LARCENY THEFT	Actual	189	165												415	354	-61	-14.7%
	Cleared	4	11												11	15	4	36.4%
7. AUTO THEFT	Actual	20	34												86	54	-32	-37.2%
	Cleared	2	2												6	4	-2	-33.3%
TOTAL INDEX CRIMES	Actual	305	298												704	603	-101	-14.3%
	Cleared	39	39												64	78	14	21.9%
TOTAL PERSON CRIMES	Actual	58	52												121	110	-11	-9.1%
	Cleared	30	22												43	52	9	20.9%
TOTAL PROPERTY CRIMES	Actual	247	246												583	493	-90	-15.4%
	Cleared	9	17												21	26	5	23.8%
ARSON	Actual	5	4												14	9	-5	-35.7%
Y-T-D Loss \$16,232	Cleared	2	2												6	4	-2	-33.3%

Part 1 Crimes by Month (Violent Crimes) 2023

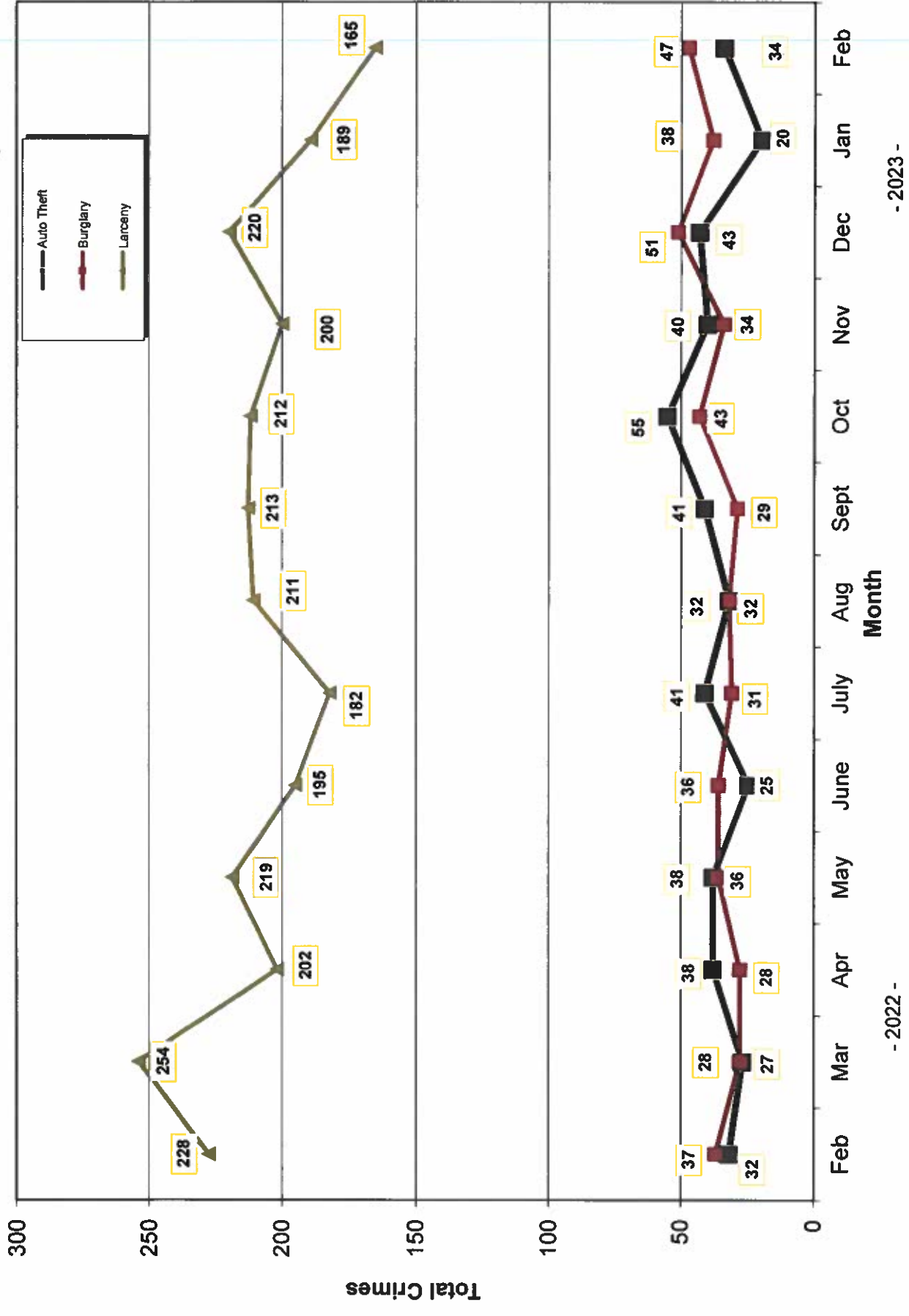


- 2023 -

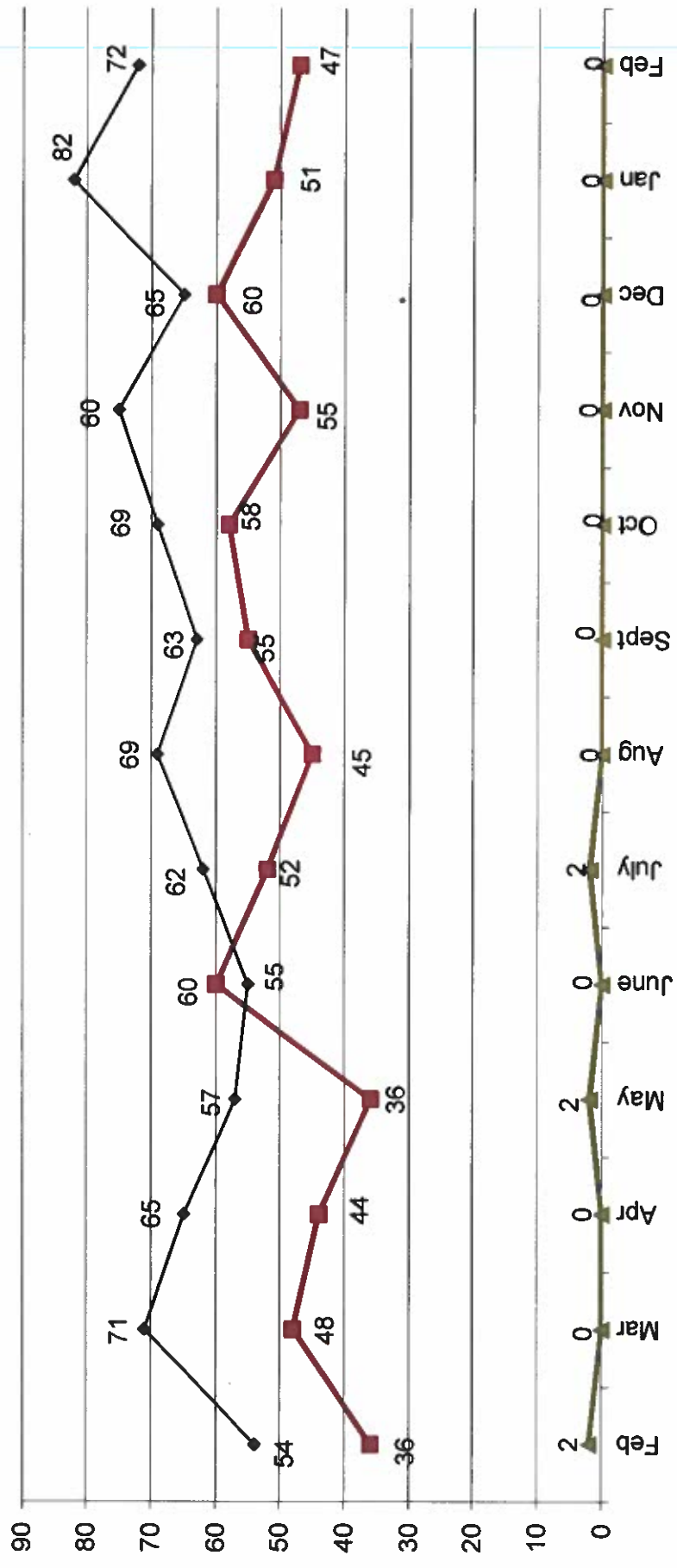
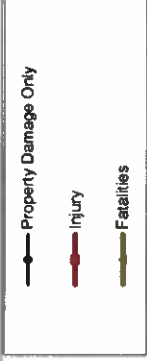
Month

- 2022 -

Part 1 Crimes by Month (Property Crimes) 2023



Traffic Collisions 2023





UCR Crimes by GeoArea

Required Parameters
 Reporting Period: Feb 2023
 Agency: OCEANSIDE

Optional Parameters
 Geographical Area: All Beats
 Group by: Agency Select by: Neighborhood

Prior Report Number: S1STA120

Neighborhood	ROBBERY--		AGGRVD		VIOLENT		BURGLARY-----		LARCENY-THEFT--		M.VEH		PROPERTY		CRIME		CAR
	MURDER	RAPE (HISTORICAL)	RAPE (HISTORICAL)	ARMED	ST/ ARM	ASSAULT	CRM TL	RESID	NRESID	TOTAL	\$400+	<\$400	TOTAL	THEFT	CRM TL	IDX TL	
Agency = OCEANSIDE																	
AIRPORT	0	1	1	0	0	1	2	0	3	3	4	2	6	1	10	12	3
EASTSIDE/CAPISTRANO	0	1	1	0	0	1	2	0	0	0	2	0	2	3	5	7	1
FIRE MOUNTAIN	0	0	0	1	0	7	8	5	10	15	17	18	35	6	56	64	10
GUAJOME	0	0	0	-1	1	6	6	5	0	5	4	3	7	0	12	18	2
IVY RAN/RAN DEL ORO	0	1	0	0	0	3	4	5	3	8	12	8	20	7	35	39	13
LAKE	0	1	1	0	2	0	3	1	0	1	2	5	7	3	11	14	1
MIRA COSTA	0	0	0	0	0	2	2	0	0	0	1	3	4	3	7	9	2
MISSN MESA/LOMA ALTA	0	0	0	0	0	5	5	0	0	0	3	10	13	0	13	18	7
MORRO HILLS	0	0	0	0	0	0	0	0	0	0	0	1	1	0	1	1	1
NORTH VALLEY	0	1	0	0	0	-1	0	1	0	1	2	3	5	0	6	6	3
OCEAN HILLS	0	0	0	1	2	1	4	0	0	0	2	4	6	0	6	10	3
OCEANA	0	0	0	0	0	1	1	0	0	0	0	3	3	0	3	4	2
SAN LUIS REY	0	0	0	0	2	1	3	0	3	3	11	9	20	5	28	31	10
SOUTH OCEANSIDE	0	1	1	0	0	1	2	1	1	2	2	0	2	1	5	7	2
TOWNSITE	0	1	1	0	0	8	9	5	3	8	15	12	27	4	39	48	5
TRI CITY	0	0	0	0	1	0	1	1	0	1	2	4	6	1	8	9	3
UNKNOWN	0	0	0	0	0	0	0	0	0	0	1	0	1	0	1	1	1
SUB-TOTAL	0	7	5	1	8	36	52	24	23	47	80	85	165	34	246	298	69
GRAND TOTALS	0	7	5	1	8	36	52	24	23	47	80	85	165	34	246	298	69



UCR Crimes by GeoArea

Required Parameters
 Reporting Period: Jan 2023 to Feb 2023
 Agency: OCEANSIDE

Optional Parameters
 Geographical Area: All Beats
 Group by: Agency Select by: Neighborhood

Prior Report Number: S1STA120

Neighborhood	MURDER	RAPE	RAPE (HISTORICAL)	ROBBERY--	ARMED	ST/ ARM	ASSAULT	VIOLENT	-----BURGLARY----	TOTAL	\$400+	<\$400	TOTAL	THEFT	M.VEH	PROPERTY	CRIME	CAR
Agency = OCEANSIDE																		
AIRPORT	1	1	1	0	0	0	2	4	0	4	6	4	10	1	15	19	6	
EASTSIDE/CAPISTRANO	0	1	1	0	0	0	4	5	1	0	2	6	8	4	13	18	5	
FIRE MOUNTAIN	0	0	0	1	1	1	9	11	5	12	26	37	63	7	87	98	23	
GUAJOME	0	0	0	-1	1	1	8	8	7	0	11	6	17	0	24	32	6	
IVY RAN/RAN DEL ORO	0	2	0	0	1	1	8	11	10	5	23	24	47	10	72	83	29	
LAKE	0	1	1	0	2	2	5	8	1	2	10	10	20	4	27	35	2	
MIRA COSTA	0	0	0	0	0	0	11	11	1	1	8	7	15	5	22	33	9	
MISSN MESALOMA ALTA	0	0	0	2	0	0	6	8	1	3	4	16	24	3	31	39	10	
MORRO HILLS	0	0	0	0	0	0	1	1	0	0	1	1	2	1	3	4	2	
NORTH VALLEY	0	1	0	0	2	10	10	13	1	0	3	6	9	0	10	23	6	
OCEAN HILLS	0	0	0	1	2	1	1	4	0	0	5	5	10	0	10	14	3	
OCEANA	0	0	0	0	0	0	1	1	6	0	0	7	7	0	13	14	5	
SAN LUIS REY	0	0	0	0	2	5	5	7	1	8	21	32	53	7	69	76	18	
SOUTH OCEANSIDE	0	1	1	0	0	0	2	3	2	1	7	4	11	3	17	20	5	
TOWNSITE	0	2	2	0	2	15	15	19	8	4	20	27	47	9	68	87	11	
TRI CITY	0	0	0	0	1	0	0	1	2	0	4	7	11	3	16	17	5	
UNKNOWN	0	0	0	0	0	0	0	0	0	0	1	1	2	0	2	2	1	
SUB-TOTAL	1	9	6	3	14	88	88	115	46	40	156	200	356	57	499	614	146	
GRAND TOTALS	1	9	6	3	14	88	88	115	46	40	156	200	356	57	499	614	146	