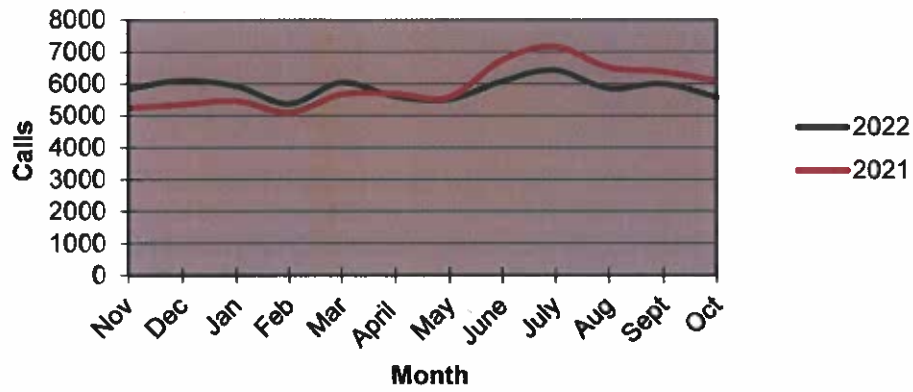


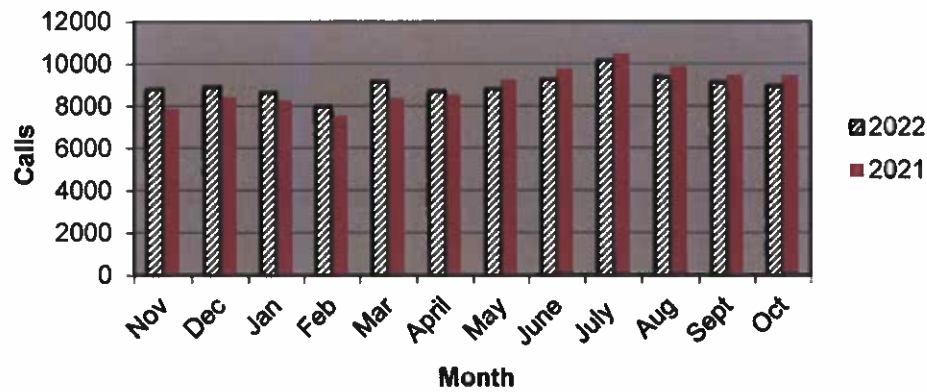
Priority 1 Dispatch Times- Police



911 Calls



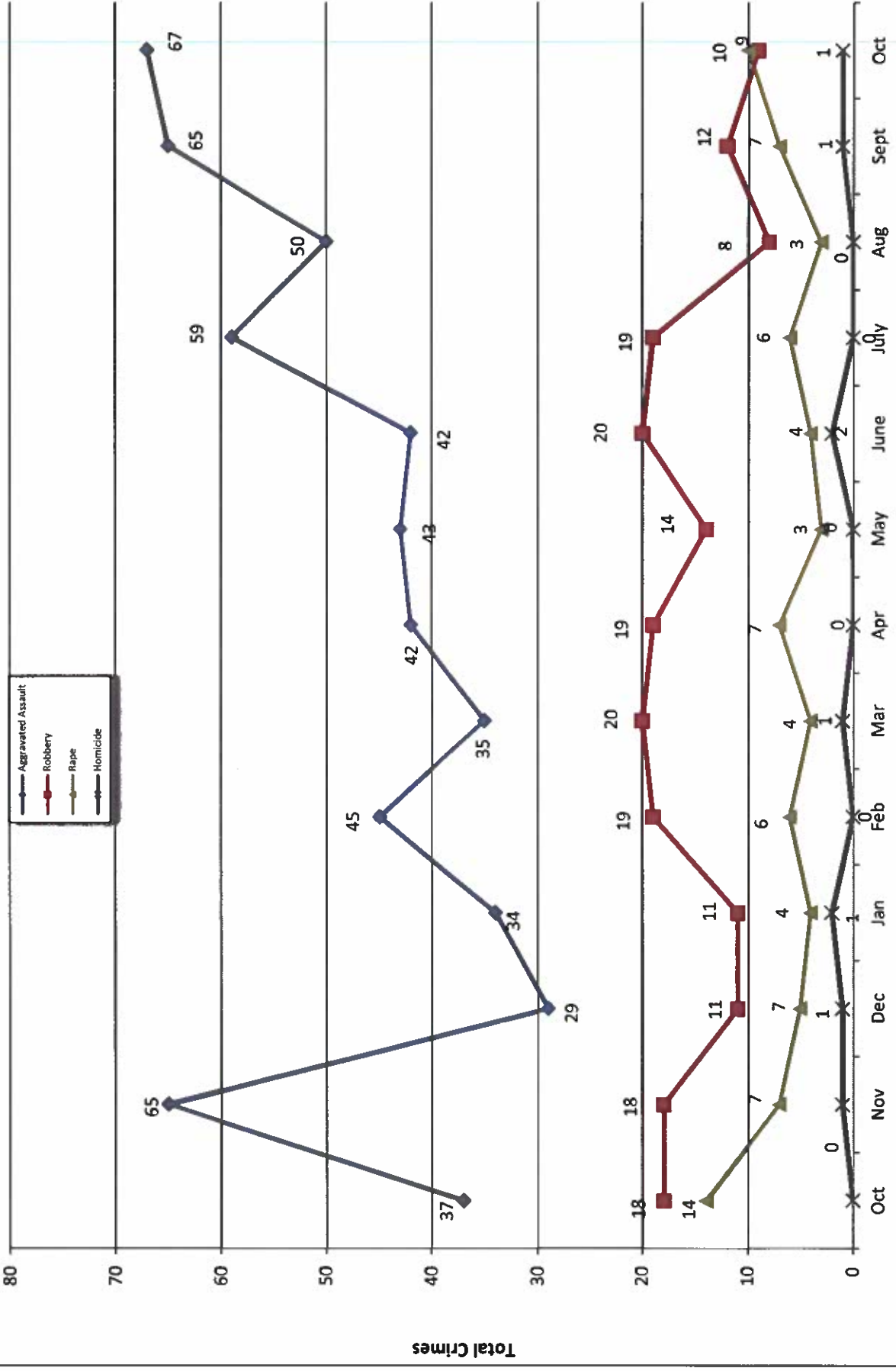
Calls for Service



**OCEANSIDE POLICE DEPARTMENT
FBI INDEX CRIMES**

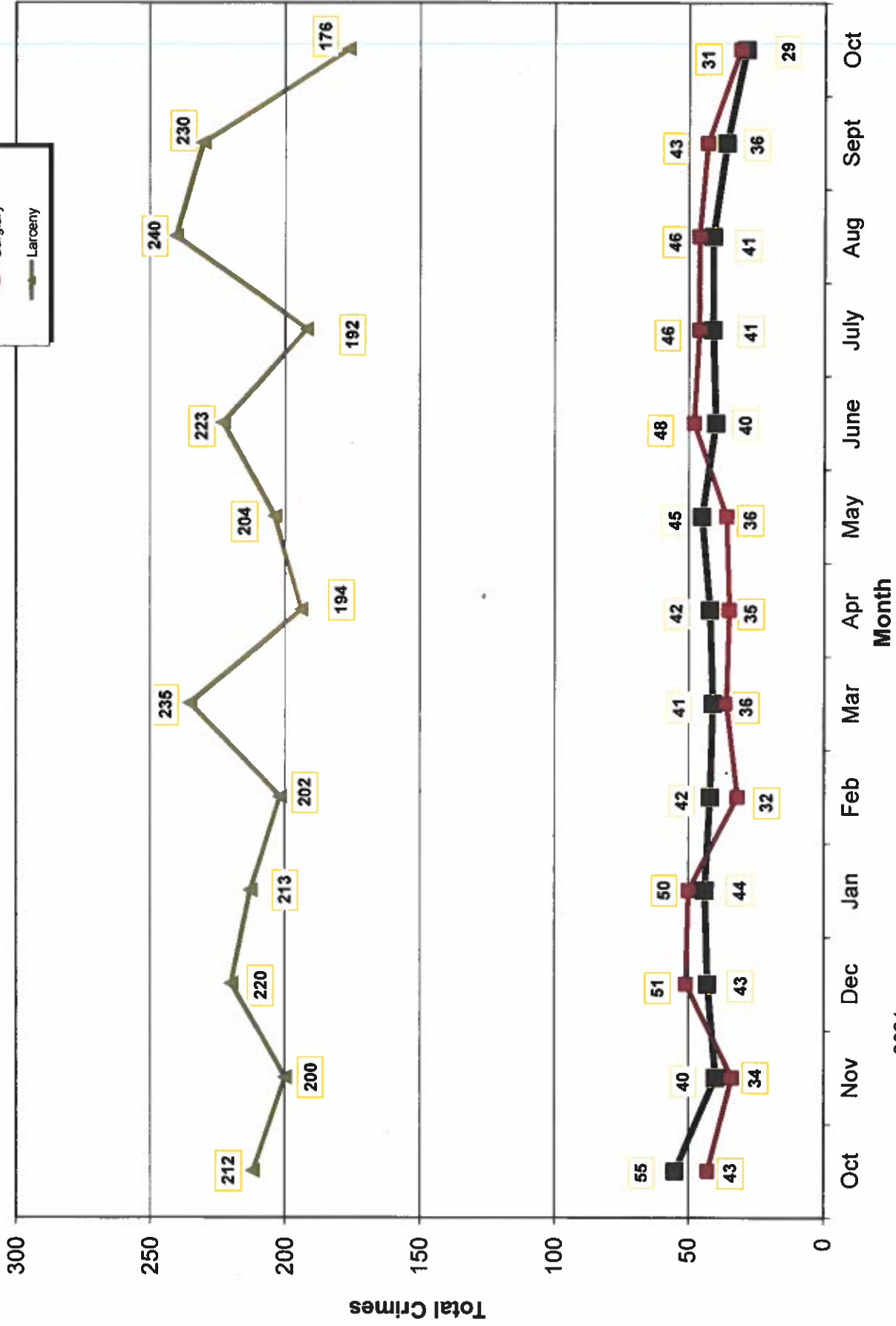
		MONTHLY CASE ACTIVITY 2022												YEAR TO DATE COMPARISON		% CHANGE			
		JAN	FEB	MAR	APR	MAY	JUN	JUL	AUG	SEP	OCT	NOV	DEC	2021	2022		CHANGE		
														2021	2022		CHANGE		
1. HOMICIDE	Actual	1	0	1	0	0	2	0	0	1	1	1	1	1	1	4	6	2	50.0%
	Cleared	0	0	1	0	0	0	0	1	1	1	1	1	1	1	2	4	2	100.0%
2. RAPE	Actual	4	6	4	7	3	4	6	3	7	10	10	10	10	83	54	-29	-34.9%	
	Cleared	1	1	2	1	0	0	0	0	0	0	0	0	0	10	5	-5	-50.0%	
3. ROBBERY	Actual	11	19	20	19	14	20	19	8	12	9	9	9	9	140	151	11	7.9%	
	Cleared	5	3	9	7	2	7	9	3	5	4	4	4	4	53	54	1	1.9%	
4. AGGR. ASSAULT	Actual	34	45	35	42	43	42	59	50	65	67	67	67	67	459	482	23	5.0%	
	Cleared	10	23	10	18	15	15	24	34	25	26	26	26	26	217	200	-17	-7.8%	
5. BURGLARY	Actual	50	32	36	35	45	48	46	46	43	31	31	31	31	334	412	78	23.4%	
	Cleared	2	2	5	5	5	6	8	0	3	5	5	5	5	42	41	-1	-2.4%	
6. LARCENY THEFT	Actual	213	202	235	194	204	223	192	240	230	176	176	176	176	2148	2109	-39	-1.8%	
	Cleared	10	1	11	10	6	9	11	9	8	8	8	8	8	117	83	-34	-29.1%	
7. AUTO THEFT	Actual	44	42	41	42	36	40	41	41	36	29	29	29	29	353	392	39	11.0%	
	Cleared	2	4	3	3	1	5	2	5	3	1	1	1	1	26	29	3	11.5%	
TOTAL INDEX CRIMES	Actual	358	346	372	339	345	379	363	388	394	323	323	323	323	3521	3607	86	2.4%	
	Cleared	30	34	41	44	24	42	54	52	47	44	44	44	44	467	412	-55	-11.8%	
TOTAL PERSON CRIMES	Actual	51	70	60	68	60	68	84	61	85	87	87	87	87	686	694	8	1.2%	
	Cleared	16	27	22	26	17	22	33	38	31	31	31	31	31	282	263	-19	-6.7%	
TOTAL PROPERTY CRIMES	Actual	307	276	312	271	285	311	279	327	309	236	236	236	236	2835	2913	78	2.8%	
	Cleared	14	7	19	18	7	20	21	14	14	14	14	14	14	185	148	-37	-20.0%	
ARSON	Actual	9	5	4	4	5	2	7	4	0	3	3	3	3	28	43	15	53.6%	
Y-T-D Loss \$383,206	Cleared	4	2	1	1	3	0	0	2	0	1	1	1	1	16	14	-2	-12.5%	

Part 1 Crimes by Month (Violent Crimes) 2022



- 2021 - Month - 2022 -

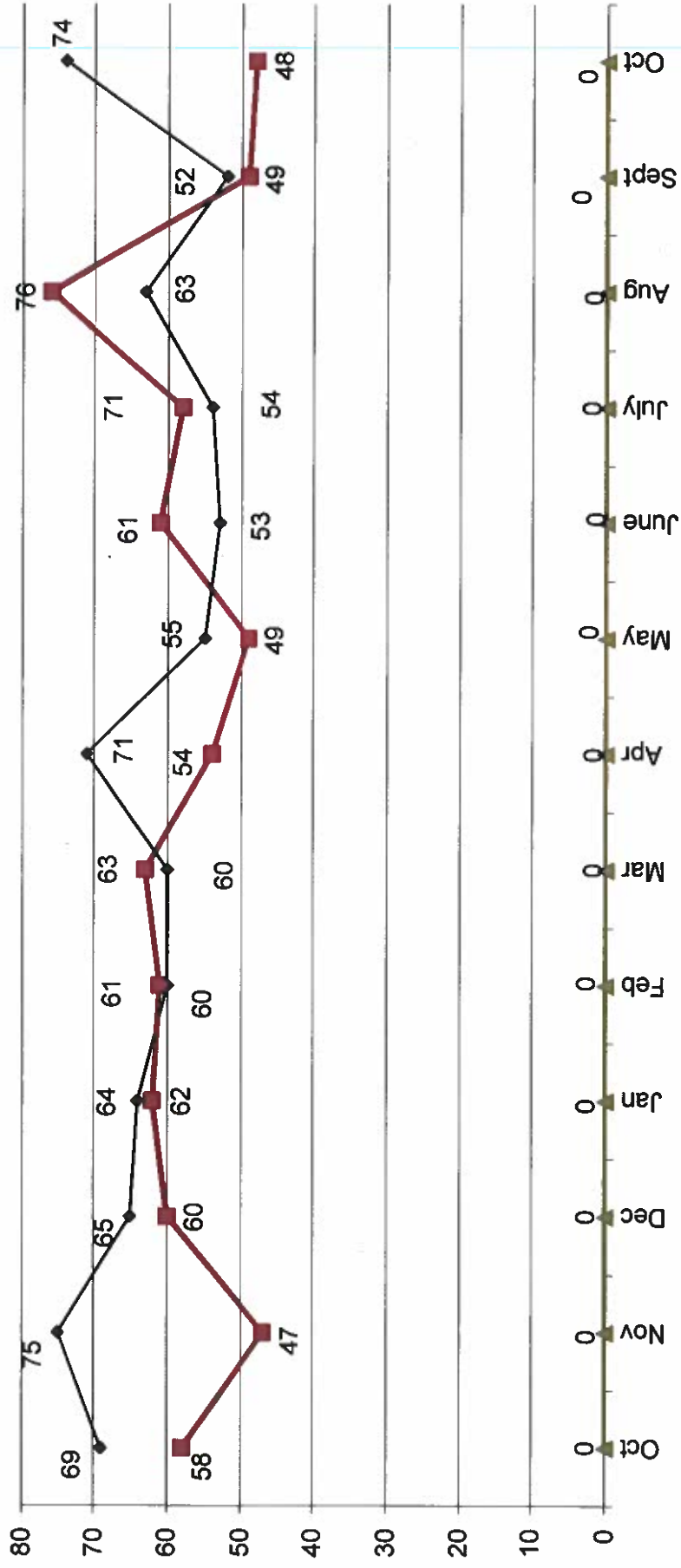
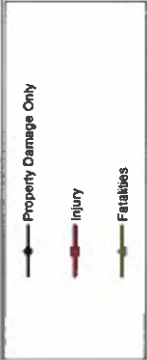
Part 1 Crimes by Month (Property Crimes) 2022



- 2021 -

- 2022 -

Traffic Collisions 2021 - 2022



-2021-

-2022-



UCR Crimes by GeoArea

Required Parameters
Reporting Period: Oct 2022
Agency: OCEANSIDE

Optional Parameters
Geographical Area: All Beats
Group by: Agency Select by: Neighborhood

Prior Report Number: S1STA120

Neighborhood	MURDER	RAPE	RAPE (HISTORICAL)	ROBBERY--	AGGRVD	VIOLENT	BURGLARY--	RESID	NRESID	TOTAL	\$400+	-\$400	TOTAL	THEFT	M.VEH	PROPERTY	CRIME	CAR
			ARMED	ST/ARM	ASSAULT	CRM TL												
Agency = OCEANSIDE																		
AIRPORT	0	0	0	0	4	4	0	0	0	0	2	2	4	1	5	5	9	4
EASTSIDE/CAPISTRANO	0	0	0	0	4	4	2	0	2	3	7	10	10	0	12	16	3	
FIRE MOUNTAIN	0	1	0	1	3	5	0	1	1	8	9	17	17	1	19	24	5	
GUAJOME	0	0	0	0	5	5	1	1	2	7	5	12	12	1	15	20	5	
IVY RAN/RAN DEL ORO	0	1	0	0	6	7	0	4	4	12	10	22	22	7	33	40	16	
LAKE	0	2	1	0	1	3	0	0	0	4	7	11	11	0	11	14	4	
MIRA COSTA	0	0	0	0	6	6	0	0	0	3	4	7	7	0	7	13	4	
MISSN MESALOMA ALTA	0	1	1	0	4	5	2	2	4	5	5	10	10	1	15	20	4	
MORRO HILLS	0	0	0	0	1	1	1	0	1	2	3	5	5	1	7	8	4	
NORTH VALLEY	0	2	2	0	4	6	2	0	2	5	3	8	8	1	11	17	4	
OCEAN HILLS	0	0	0	0	2	2	0	0	0	0	1	1	1	4	5	7	1	
OCEANA	1	0	0	0	0	1	0	0	0	3	3	6	6	0	6	7	3	
SAN LUIS REY	0	2	1	0	14	17	3	3	6	8	4	12	12	4	22	39	5	
SOUTH OCEANSIDE	0	0	0	1	1	2	2	0	2	5	7	12	12	2	16	18	3	
TOWNSITE	0	0	0	0	11	15	4	3	7	18	14	32	32	6	45	60	8	
TRI CITY	0	0	0	2	1	3	0	0	0	2	5	7	7	0	7	10	5	
UNKNOWN	0	1	1	0	0	1	0	0	0	0	0	0	0	0	0	1	0	
SUB-TOTAL	1	10	6	2	7	67	87	17	14	31	87	89	176	29	236	323	78	
GRAND TOTALS	1	10	6	2	7	67	87	17	14	31	87	89	176	29	236	323	78	



UCR Crimes by GeoArea

Required Parameters
 Reporting Period: Jan 2022 to Oct 2022
 Agency: OCEANSIDE

Optional Parameters
 Geographical Area: All Beats
 Group by: Agency Select by: Neighborhood

Prior Report Number: S1STA120

Neighborhood	MURDER	RAPE	RAPE (HISTORICAL)	ROBBERY--	ARMED	ST/ ARM	ASSAULT	VIOLENT	---BURGLARY---	TOTAL	\$400+	<\$400	TOTAL	THEFT	CRM TL	IDX TL	CRIME	CAR	
Agency = OCEANSIDE																			
AIRPORT	0	0	0	0	1	2	20	23	0	8	32	21	53	11	72	95	33		
EASTSIDE/CAPISTRANO	1	2	2	2	4	2	33	42	13	3	38	45	83	21	120	162	44		
FIRE MOUNTAIN	0	3	2	2	8	5	24	40	5	13	110	131	241	19	278	318	78		
GUAJOME	1	2	2	2	2	2	19	26	10	13	62	55	117	18	158	184	59		
IVY RAN/RAN DEL ORO	0	4	2	2	3	3	37	47	28	28	154	108	282	52	371	418	147		
LAKE	0	2	1	1	6	4	14	26	11	26	48	65	113	23	173	199	45		
MIRA COSTA	0	2	2	2	2	1	26	31	13	12	55	59	114	22	161	192	74		
MISSN MESALOOMA ALTA	2	5	5	5	8	14	35	64	10	21	66	107	173	26	230	294	86		
MORRO HILLS	0	0	0	0	0	1	11	12	7	3	10	11	21	7	38	50	15		
NORTH VALLEY	0	5	3	3	4	-1	38	46	10	13	39	62	101	20	144	190	45		
OCEAN HILLS	0	1	1	1	1	2	6	10	3	1	14	13	27	14	45	55	17		
OCEANA	1	0	0	0	0	0	5	6	5	2	14	18	32	10	49	55	17		
SAN LUIS REY	0	9	8	8	5	14	64	92	22	14	106	98	204	45	285	377	105		
SOUTH OCEANSIDE	0	0	0	0	4	2	27	33	25	7	63	48	111	27	170	203	47		
TOWNSITE	0	14	13	14	14	29	110	167	46	29	201	183	384	57	516	683	142		
TRI CITY	2	4	4	4	3	6	14	29	5	6	34	31	65	20	96	125	40		
UNKNOWN	0	1	1	1	0	0	-1	0	-1	0	4	4	8	0	7	7	2		
SUB-TOTAL	7	54	46	65	86	86	482	694	213	199	1,050	1,059	2,109	392	2,913	3,607	996		
GRAND TOTALS	7	54	46	65	86	86	482	694	213	199	1,050	1,059	2,109	392	2,913	3,607	996		