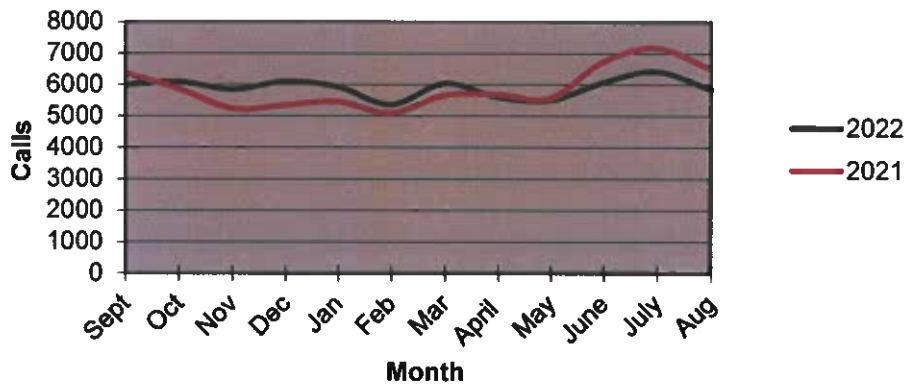


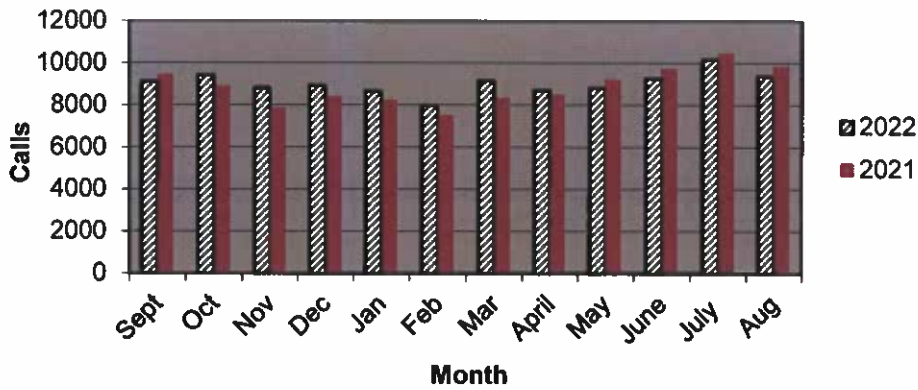
Priority 1 Dispatch Times- Police



911 Calls



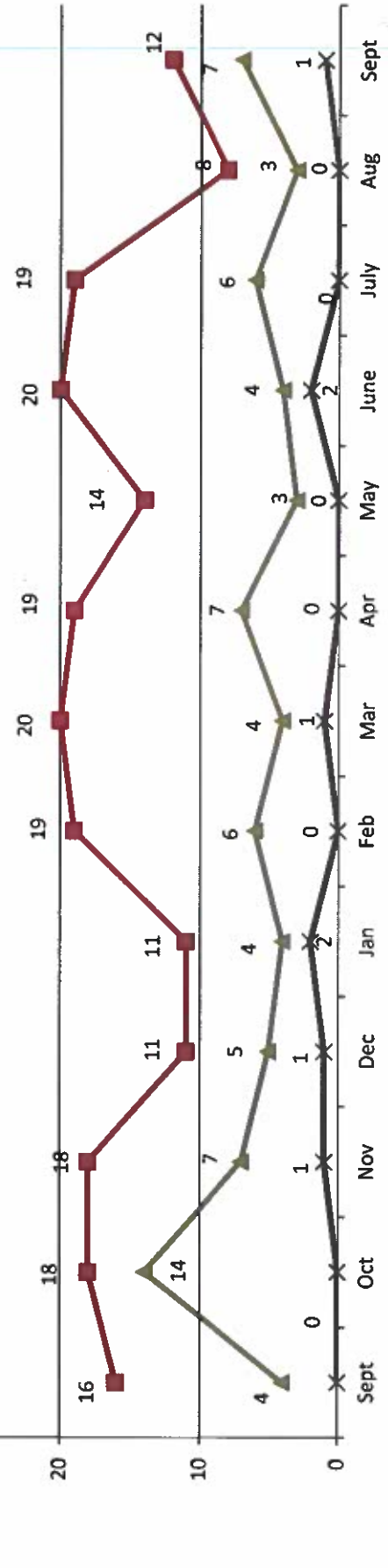
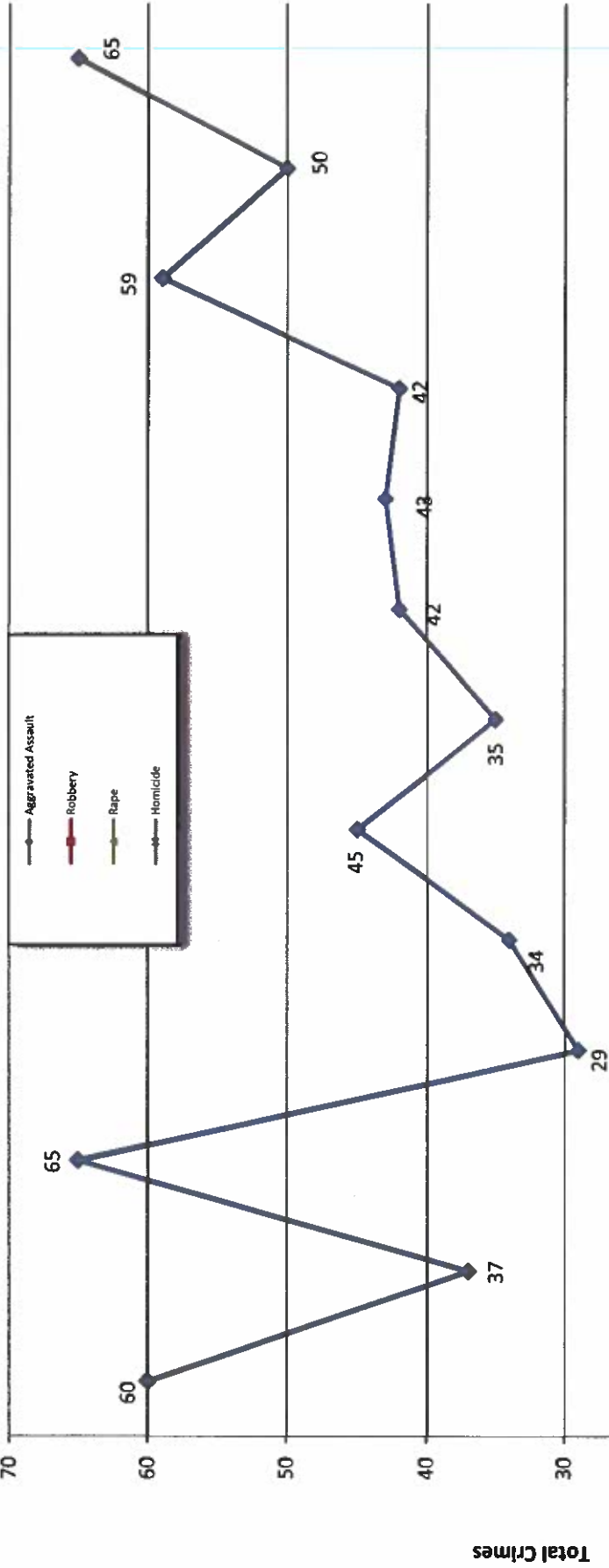
Calls for Service



**OCEANSIDE POLICE DEPARTMENT
FBI INDEX CRIMES**

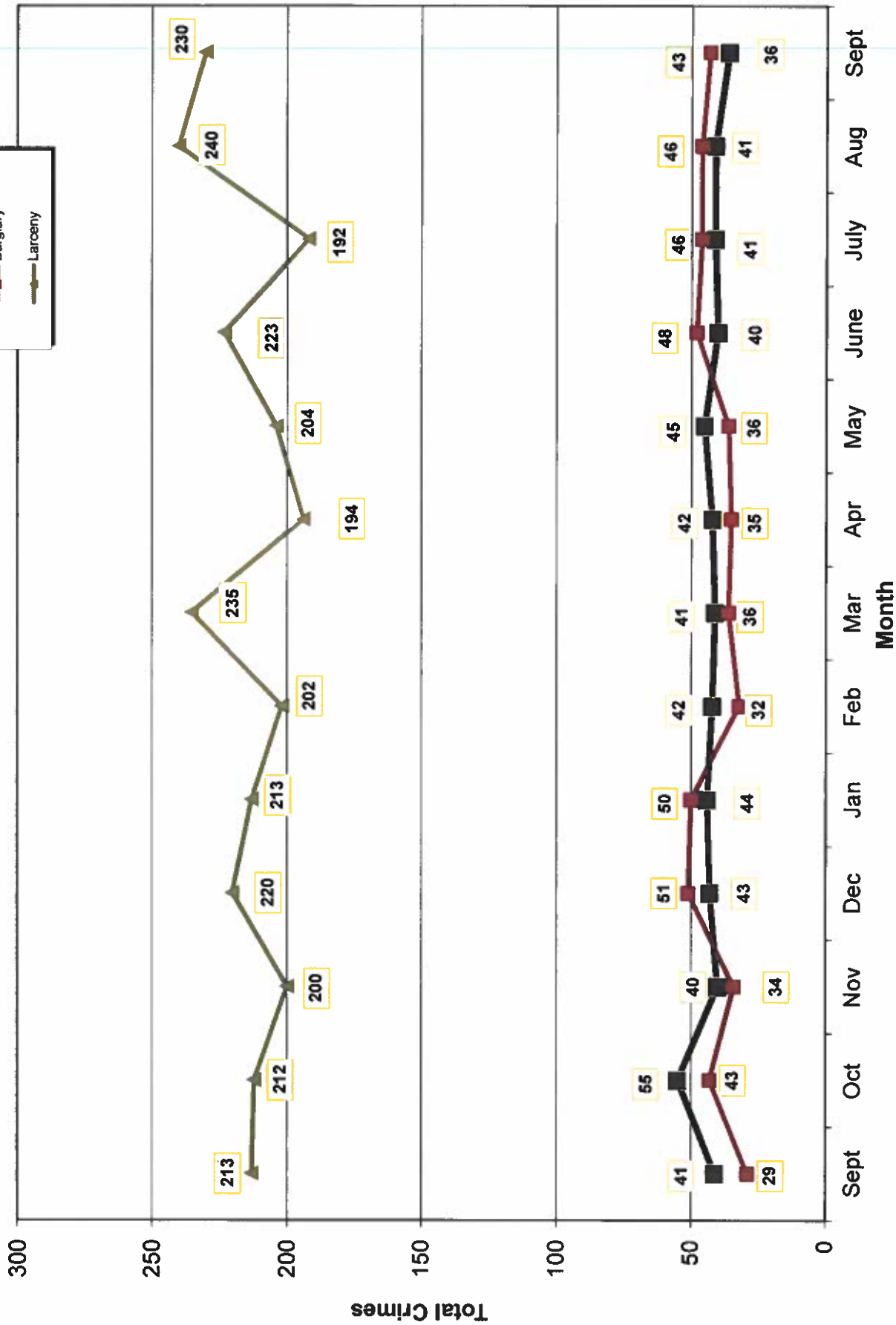
		MONTHLY CASE ACTIVITY 2022												YEAR TO DATE COMPARISON			% CHANGE
		JAN	FEB	MAR	APR	MAY	JUN	JUL	AUG	SEP	OCT	NOV	DEC	2021	2022	CHANGE	
1.	HOMICIDE Actual Cleared	1	0	1	0	0	2	0	0	0	1			4	5	1	25.0%
		0	0	1	0	0	0	0	1	1				2	3	1	50.0%
2.	RAPE Actual Cleared	4	6	4	7	3	4	6	3	7				69	44	-25	-36.2%
		1	1	2	1	0	0	0	0	0				10	5	-5	-50.0%
3.	ROBBERY Actual Cleared	11	19	20	19	14	20	19	8	12				122	142	20	16.4%
		5	3	9	7	2	7	9	3	5				48	50	2	4.2%
4.	AGGR. ASSAULT Actual Cleared	34	45	35	42	43	42	59	50	65				422	415	-7	-1.7%
		10	23	10	18	15	15	24	34	25				200	174	-26	-13.0%
5.	BURGLARY Actual Cleared	50	32	36	35	45	48	46	46	43				291	381	90	30.9%
		2	2	5	5	5	6	8	0	3				32	36	4	12.5%
6.	LARCENY THEFT Actual Cleared	213	202	235	194	204	223	192	240	230				1936	1933	-3	-0.2%
		10	1	11	10	6	9	11	9	8				111	75	-36	-32.4%
7.	AUTO THEFT Actual Cleared	44	42	41	42	36	40	41	41	36				298	363	65	21.8%
		2	4	3	3	1	5	2	5	3				22	28	6	27.3%
	TOTAL INDEX CRIMES Actual Cleared	358	346	372	339	345	379	363	388	394				3142	3284	142	4.5%
		30	34	41	44	24	42	54	52	47				425	368	-57	-13.4%
	TOTAL PERSON CRIMES Actual Cleared	51	70	60	68	60	68	84	61	85				617	607	-10	-1.6%
		16	27	22	26	17	22	33	38	31				260	232	-28	-10.8%
	TOTAL PROPERTY CRIMES Actual Cleared	307	276	312	271	285	311	279	327	309				2525	2677	152	6.0%
		14	7	19	18	7	20	21	14	14				165	134	-31	-18.8%
	ARSON Actual Cleared	9	5	4	4	5	2	7	4	0				26	40	14	53.8%
	Y-T-D Loss \$379,205	4	2	1	1	3	0	0	2	0				15	13	-2	-13.3%

Part 1 Crimes by Month (Violent Crimes) 2022



- 2021 - Month - 2022 -

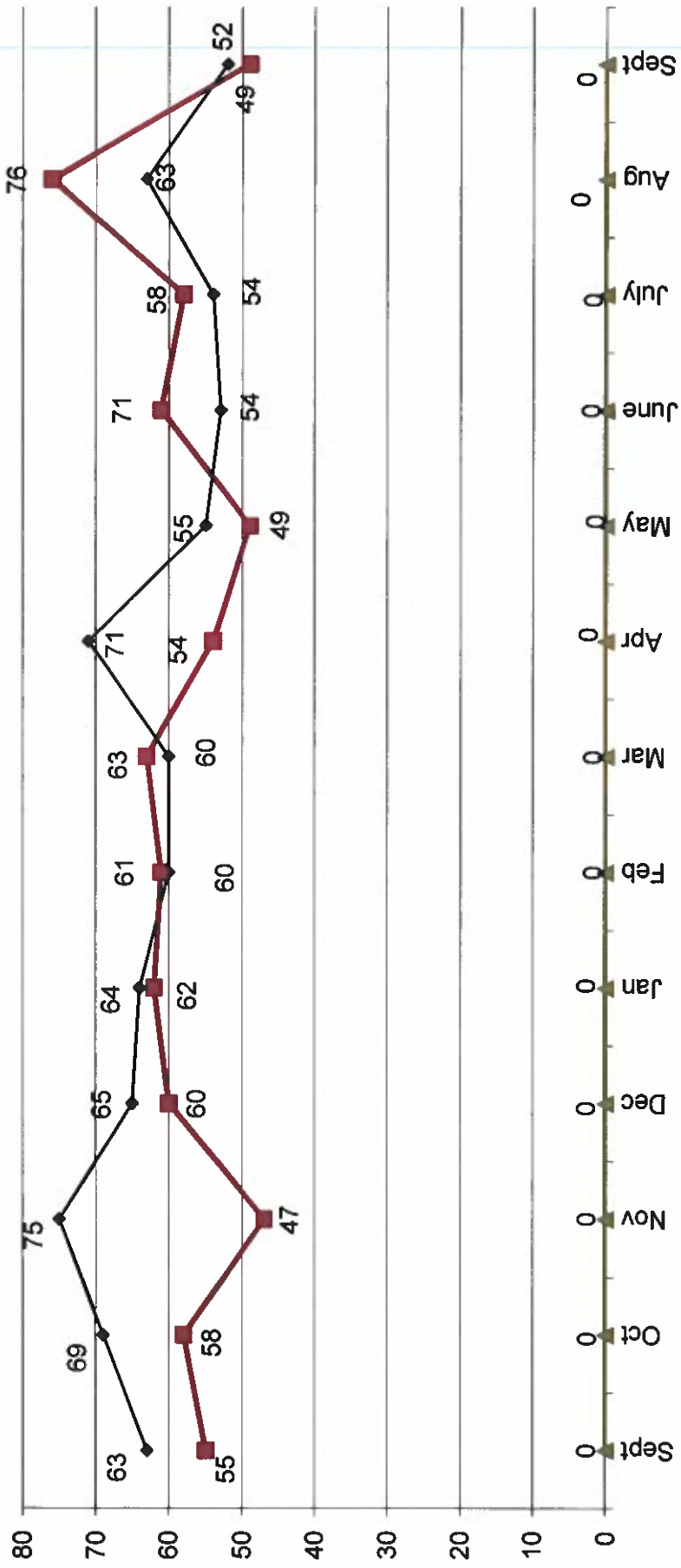
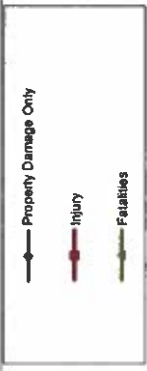
Part 1 Crimes by Month (Property Crimes) 2022



- 2021 -

- 2022 -

Traffic Collisions 2021 - 2022



-2021-

-2022-



UCR Crimes by GeoArea

Required Parameters
 Reporting Period: Sep 2022
 Agency: OCEANSIDE

Optional Parameters
 Geographical Area: All Beats
 Group by: Agency Select by: Neighborhood

Prior Report Number: S1STA120

Neighborhood	MURDER	RAPE	RAPE (HISTORICAL)	ROBBERY--	AGGRVD	VIOLENT	BURGLARY-----	---LARCENY-THEFT---	TOTAL	\$400+	<\$400	TOTAL	THEFT	CRM TL	PROPERTY	CRIME	CAR
				ARMED	ASSAULT	CRM TL	NRESID	TOTAL								IDX TL	PROWL
				ST/ ARM													
Agency = OCEANSIDE																	
AIRPORT	0	0	0	0	0	1	0	1	7	2	9	2	2	12	13	5	
EASTSIDE/CAPISTRANO	0	1	0	0	5	6	3	0	6	4	10	3	3	16	22	5	
FIRE MOUNTAIN	0	2	1	0	3	6	0	1	14	19	33	2	2	36	42	14	
GUAJOME	1	0	0	0	1	2	4	2	6	2	8	2	2	16	18	5	
IVY RANIRAN DEL ORO	0	0	0	0	1	1	4	1	12	9	21	3	3	29	30	8	
LAKE	0	0	0	0	5	5	0	1	4	9	13	2	2	16	21	5	
MIRA COSTA	0	0	0	1	4	5	2	1	4	6	10	3	3	16	21	8	
MISSN MESALOMA ALTA	0	0	0	0	4	4	3	0	7	2	9	1	1	13	17	5	
MORRO HILLS	0	0	0	0	0	0	1	0	1	3	4	0	0	5	5	3	
NORTH VALLEY	0	1	0	1	6	8	1	0	6	7	13	2	2	16	24	6	
OCEAN HILLS	0	0	0	0	0	0	0	0	1	0	1	1	1	2	2	0	
OCEANA	0	0	0	0	1	1	2	0	5	4	9	1	1	12	13	6	
SAN LUIS REY	0	1	1	1	6	9	2	0	8	12	20	2	2	24	33	7	
SOUTH OCEANSIDE	0	0	0	0	2	2	2	2	6	7	13	4	4	21	23	6	
TOWNSITE	0	1	1	3	24	32	8	2	24	28	52	7	7	69	101	23	
TRI CITY	0	1	1	0	2	3	0	0	3	2	5	1	1	6	8	1	
UNKNOWN	0	0	0	0	0	0	0	0	0	0	0	0	0	0	0	0	
SUB-TOTAL	1	7	6	7	65	85	32	11	114	116	230	36	36	309	394	107	
GRAND TOTALS	1	7	6	7	65	85	32	11	114	116	230	36	36	309	394	107	



UCR Crimes by GeoArea

Required Parameters
 Reporting Period: Jan 2022 to Sep 2022
 Agency: OCEANSIDE

Optional Parameters
 Geographical Area: All Beats
 Group by: Agency Select by: Neighborhood

Prior Report Number: S1STA120

Neighborhood	MURDER	RAPE	RAPE (HISTORICAL)	ROBBERY—	ARMED	ST/ ARM	ASSAULT	CRIM TL	RESID	NRESID	TOTAL	\$400+	<\$400	TOTAL	THEFT	CRM TL	IDX TL	CRIME	CAR
Agency = OCEANSIDE																			
AIRPORT	0	0	0	0	1	2	16	19	0	8	8	30	19	49	10	67	86	29	
EASTSIDE/CAPISTRANO	1	2	2	2	4	2	29	38	11	3	14	35	38	73	21	108	146	41	
FIRE MOUNTAIN	0	2	2	2	7	5	21	35	5	12	17	102	122	224	18	259	294	73	
GUAJOME	1	2	2	2	2	2	14	21	9	12	21	55	50	105	17	143	164	54	
IVY RAN/RAN DEL ORO	0	3	2	2	3	3	31	40	29	24	53	142	98	240	45	338	378	131	
LAKE	0	0	0	0	6	4	13	23	11	26	37	44	58	102	23	162	185	41	
MIRA COSTA	0	2	2	2	2	1	20	25	13	12	25	52	55	107	22	154	179	70	
MISSN MESALOMA ALTA	2	4	4	4	8	14	31	59	8	19	27	61	102	163	25	215	274	82	
MORRO HILLS	0	0	0	0	0	1	10	11	6	3	9	8	8	16	6	31	42	11	
NORTH VALLEY	0	3	1	1	4	-1	34	40	8	13	21	34	59	93	19	133	173	41	
OCEAN HILLS	0	1	1	1	1	2	4	8	3	1	4	14	12	26	10	40	48	16	
OCEANA	0	0	0	0	0	0	5	5	5	2	7	11	15	26	10	43	48	14	
SAN LUIS REY	0	7	7	7	5	13	50	75	19	11	30	98	94	192	41	263	338	100	
SOUTH OCEANSIDE	0	0	0	0	3	2	26	31	23	7	30	58	41	99	25	154	185	44	
TOWNSITE	0	14	13	13	14	25	99	152	42	26	68	183	169	352	51	471	623	134	
TRI CITY	2	4	4	4	3	4	13	26	5	6	11	32	26	58	20	89	115	35	
UNKNOWN	0	0	0	0	0	0	-1	-1	-1	0	-1	4	4	8	0	7	6	2	
SUB-TOTAL	6	44	40	40	63	79	415	607	196	185	381	963	970	1,933	363	2,677	3,284	918	
GRAND TOTALS	6	44	40	40	63	79	415	607	196	185	381	963	970	1,933	363	2,677	3,284	918	