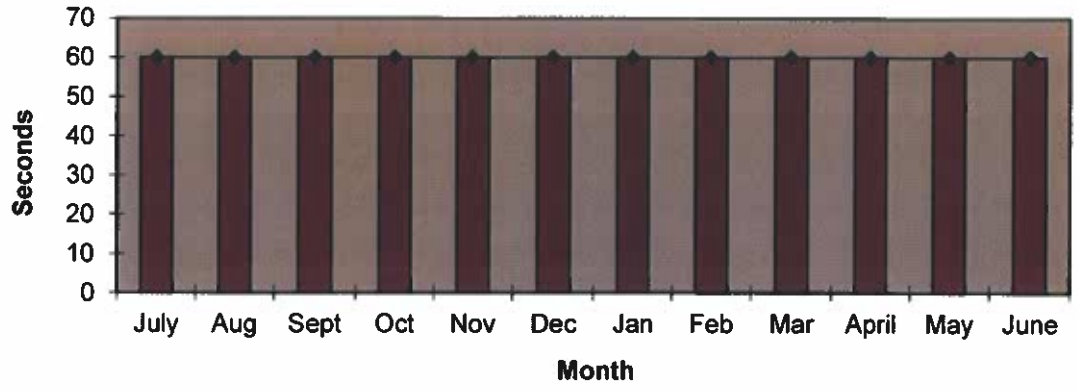
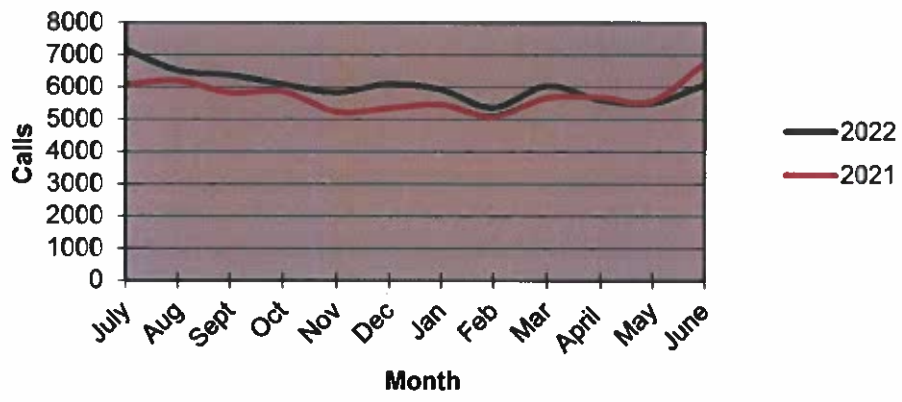


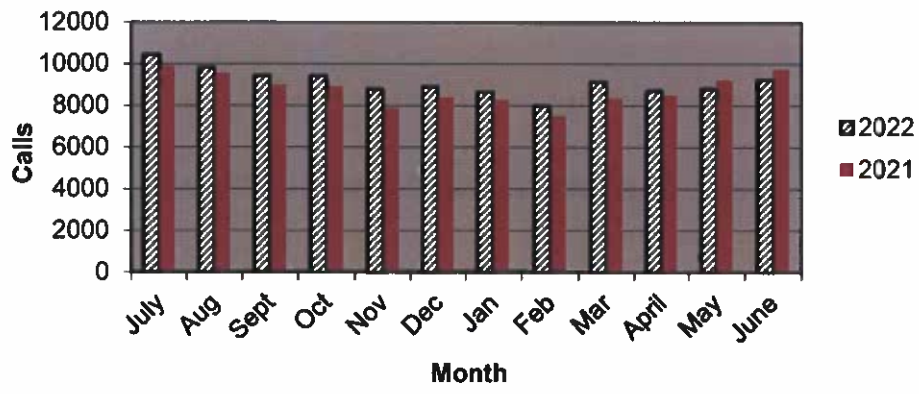
Priority 1 Dispatch Times- Police



911 Calls



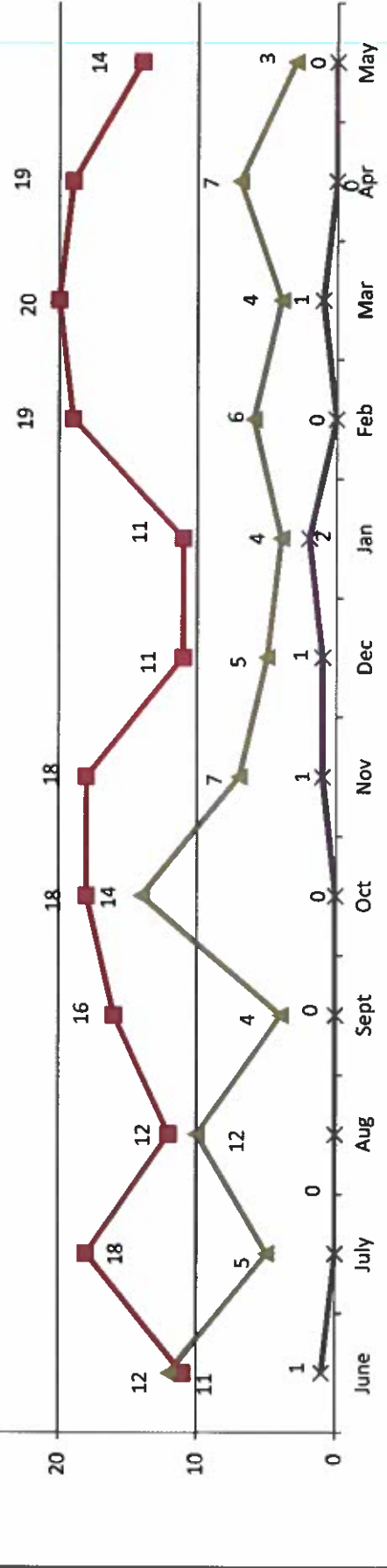
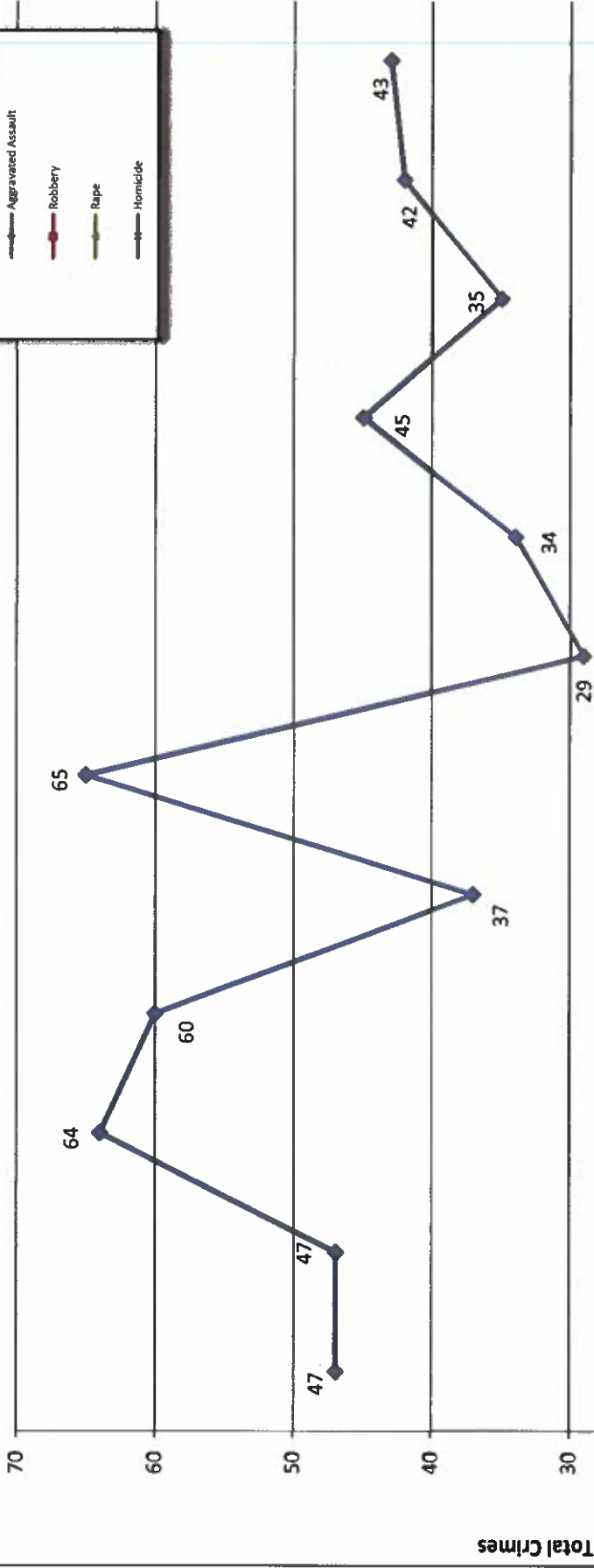
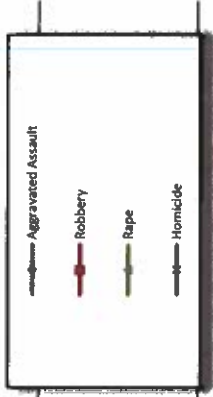
Calls for Service



**OCEANSIDE POLICE DEPARTMENT
FBI INDEX CRIMES**

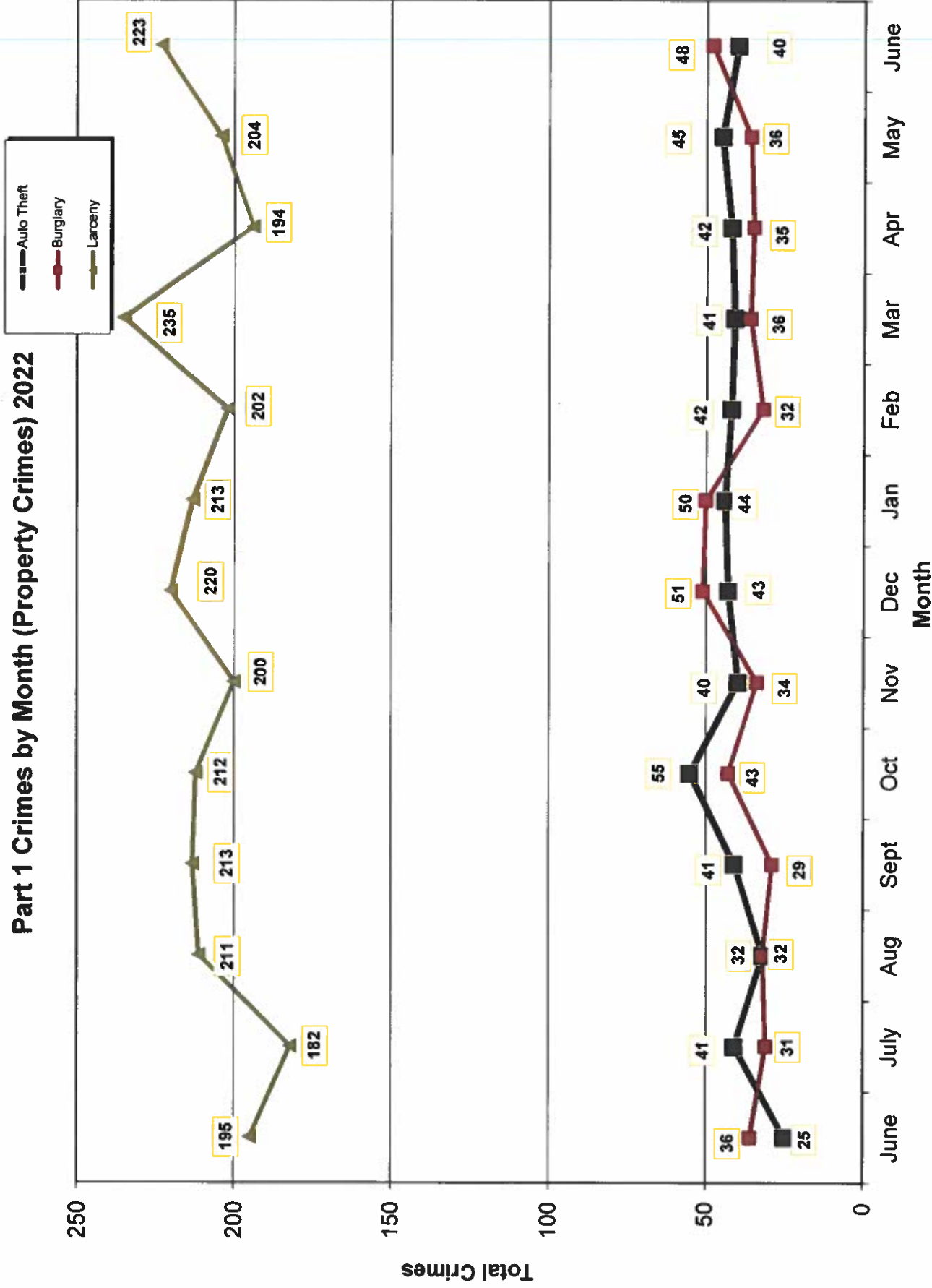
		MONTHLY CASE ACTIVITY 2022												YEAR TO DATE COMPARISON		% CHANGE	
		JAN	FEB	MAR	APR	MAY	JUN	JUL	AUG	SEP	OCT	NOV	DEC	2021	2022		CHANGE
1. HOMICIDE	Actual Cleared	2 0	0 0	1 1	0 0	0 0	2 0							4 2	5 1	1 -1	25.0% -50.0%
2. RAPE	Actual Cleared	4 1	6 1	4 2	7 1	3 0	4 0							50 8	28 5	-22 -3	-44.0% 800.0%
3. ROBBERY	Actual Cleared	11 5	19 3	20 9	19 7	14 2	20 7							76 29	103 33	27 4	35.5% 13.8%
4. AGGR. ASSAULT	Actual Cleared	34 10	45 23	35 10	42 18	43 15	42 15							251 116	241 91	-10 -25	-4.0% -21.6%
5. BURGLARY	Actual Cleared	50 2	32 2	36 5	35 5	45 5	48 6							199 18	246 25	47 7	23.6% 38.9%
6. LARCENY THEFT	Actual Cleared	213 10	202 1	235 11	194 10	204 6	223 9							1330 71	1271 47	-59 -24	-4.4% -33.8%
7. AUTO THEFT	Actual Cleared	44 2	42 4	41 3	42 3	36 1	40 5							184 14	245 18	61 4	33.2% 28.6%
TOTAL INDEX CRIMES	Actual Cleared	358 30	346 34	372 41	339 44	345 24	379 42							2094 242	2139 215	45 -27	2.1% -11.2%
TOTAL PERSON CRIMES	Actual Cleared	51 16	70 27	60 22	68 26	60 17	68 22							381 155	377 130	-4 -25	-1.0% -16.1%
TOTAL PROPERTY CRIMES	Actual Cleared	307 14	276 7	312 19	271 18	285 7	311 20							1713 103	1762 85	49 -18	2.9% -17.5%
ARSON	Actual	9	5	4	4	5	2							17	29	12	70.6%
Y-T-D Loss \$47,534	Cleared	4	2	1	1	3	0							11	11	0	0.0%

Part 1 Crimes by Month (Violent Crimes) 2022



- 2021 - Month - 2022 -

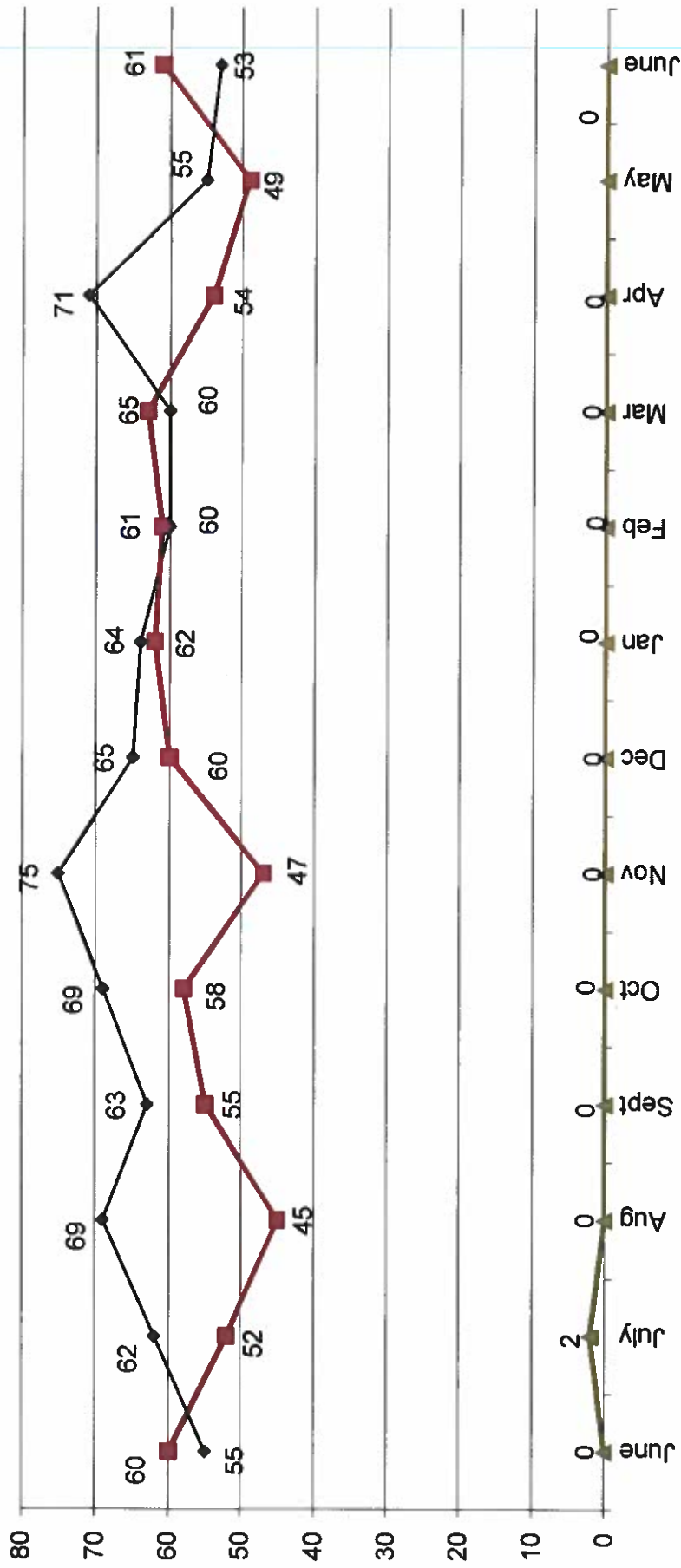
Part 1 Crimes by Month (Property Crimes) 2022



- 2021 -

- 2022 -

Traffic Collisions 2021 - 2022





UCR Crimes by GeoArea

Required Parameters
 Reporting Period: Jun 2022
 Agency: OCEANSIDE

Optional Parameters
 Geographical Area: All Beats
 Group by: Agency Select by: Neighborhood

Prior Report Number: S1STA120

Neighborhood	MURDER	RAPE	RAPE (HISTORICAL)	ROBBERY--	AGGRVD	VIOLENT	BURGLARY--	RESID	NRESID	TOTAL	\$400+	<\$400	TOTAL	THEFT	CRM TL	IDX TL	CRIME	CAR
			ARMED	ST/ ARM	ASSAULT	CRM TL												
Agency = OCEANSIDE																		
AIRPORT	0	0	0	0	0	1	0	0	2	2	4	2	6	3	11	12	3	
EASTSIDE/CAPISTRANO	0	0	0	0	0	4	0	0	1	1	5	4	9	3	13	17	6	
FIRE MOUNTAIN	0	0	0	2	2	4	0	0	0	0	6	13	19	2	21	29	5	
GUAJOME	0	0	0	0	1	1	0	0	0	0	6	9	15	4	19	21	7	
IVY RAN/RAN DEL ORO	0	0	0	0	0	6	1	7	8	17	11	28	2	38	44	13		
LAKE	0	0	0	1	1	2	4	2	4	6	5	7	12	-1	17	21	5	
MIRA COSTA	0	0	0	1	1	2	4	1	0	1	2	4	6	2	9	13	2	
MISSN MESA/LOMA ALTA	0	0	0	1	1	2	4	0	2	2	3	12	15	3	20	24	5	
MORRO HILLS	0	0	0	0	0	0	0	0	0	0	1	1	2	1	3	3	1	
NORTH VALLEY	0	0	0	0	0	2	2	0	4	4	6	10	16	3	23	25	8	
OCEAN HILLS	0	0	0	0	0	0	1	0	1	2	1	3	2	2	6	6	2	
OCEANA	0	0	0	0	0	0	0	0	0	0	0	-1	-1	1	0	0	-1	
SAN LUIS REY	0	0	0	3	2	2	5	3	1	4	17	10	27	8	39	44	14	
SOUTH OCEANSIDE	0	0	0	0	1	2	3	8	1	9	7	6	13	1	23	26	9	
TOWNSITE	1	4	3	2	3	14	24	4	6	10	23	24	47	5	62	86	19	
TRI CITY	1	0	0	0	0	0	1	0	0	0	4	2	6	1	7	8	6	
UNKNOWN	0	0	0	0	0	0	0	0	0	0	0	0	0	0	0	0	0	
SUB-TOTAL	2	4	3	7	13	42	68	20	28	48	108	115	223	40	311	379	104	
GRAND TOTALS	2	4	3	7	13	42	68	20	28	48	108	115	223	40	311	379	104	



UCR Crimes by GeoArea

Required Parameters
 Reporting Period: Jan 2022 to Jun 2022
 Agency: OCEANSIDE

Optional Parameters
 Geographical Area: All Beats
 Group by: Agency Select by: Neighborhood

Prior Report Number: S1STA120

Neighborhood	MURDER	RAPE	RAPE (HISTORICAL)	ROBBERY—	ARMED	ST/ ARM	ASSAULT	CRM TL	RESID	NRESID	TOTAL	\$400+	<\$400	TOTAL	THEFT	CRM TL	IDX TL	CRIME	CAR	
				ROBBERY—	ARMED	ST/ ARM	ASSAULT	CRM TL	RESID	NRESID	TOTAL	\$400+	<\$400	TOTAL	THEFT	CRM TL	IDX TL	CRIME	CAR	
				ROBBERY—	ARMED	ST/ ARM	ASSAULT	CRM TL	RESID	NRESID	TOTAL	\$400+	<\$400	TOTAL	THEFT	CRM TL	IDX TL	CRIME	CAR	
Agency = OCEANSIDE																				
AIRPORT	0	0	0	0	1	1	8	10	0	3	3	13	13	26	5	34	44	17		
EASTSIDE/CAPISTRANO	0	1	1	1	1	1	22	25	4	2	6	27	26	53	11	70	95	30		
FIRE MOUNTAIN	0	0	0	6	4	4	15	25	3	10	13	64	77	141	12	166	191	49		
GUAJOME	0	2	2	2	2	2	11	17	5	3	8	33	40	73	12	93	110	37		
IVY RAN/RAN DEL ORO	0	1	0	2	2	2	23	28	19	18	37	105	75	180	30	247	275	102		
LAKE	0	0	0	5	4	4	6	15	11	23	34	34	39	73	13	120	135	31		
MIRA COSTA	0	1	1	1	1	1	8	11	6	10	16	31	42	73	15	104	115	49		
MISSN MESA/LOMA ALTA	2	3	3	9	9	9	19	42	4	13	17	39	78	117	17	151	193	60		
MORRO HILLS	0	0	0	0	1	1	7	8	4	2	6	5	5	10	4	20	28	7		
NORTH VALLEY	0	2	1	0	-1	23	23	24	2	8	10	22	44	66	15	91	115	30		
OCEAN HILLS	0	1	1	1	2	3	3	7	2	0	2	10	8	18	6	26	33	11		
OCEANA	0	0	0	0	0	3	3	3	2	0	2	5	9	14	8	24	27	8		
SAN LUIS REY	0	6	6	4	8	32	32	50	13	5	18	65	58	123	29	170	220	70		
SOUTH OCEANSIDE	0	0	0	3	2	13	13	18	17	4	21	36	23	59	19	99	117	26		
TOWNSITE	1	10	9	9	17	43	43	80	25	23	48	104	96	200	35	283	363	71		
TRI CITY	2	1	1	3	3	6	6	15	2	4	6	23	15	38	14	58	73	26		
UNKNOWN	0	0	0	0	0	-1	-1	-1	-1	0	-1	4	3	7	0	6	5	2		
SUB-TOTAL	5	28	25	47	56	241	241	377	118	128	246	620	651	1,271	245	1,762	2,139	626		
GRAND TOTALS	5	28	25	47	56	241	241	377	118	128	246	620	651	1,271	245	1,762	2,139	626		